

## Product datasheet for RC222044

### SMARCD3 (NM\_003078) Human Tagged ORF Clone

#### Product data:

**Product Type:** Expression Plasmids  
**Product Name:** SMARCD3 (NM\_003078) Human Tagged ORF Clone  
**Tag:** Myc-DDK  
**Symbol:** SMARCD3  
**Synonyms:** BAF60C; CRACD3; Rsc6p  
**Mammalian Cell Selection:** Neomycin  
**Vector:** pCMV6-Entry (PS100001)  
**E. coli Selection:** Kanamycin (25 ug/mL)  
**ORF Nucleotide Sequence:** >RC222044 representing NM\_003078  
 Red=Cloning site Blue=ORF Green=Tags(s)

TTTTGTAATACGACTCACTATAGGGCGGCCGGAATTCGTCGACTGGATCCGGTACCGAGGAGATCTGCC  
 GCC**CGGATCGCC**

ATGACTCCAGGTCTTCAGCACCCACCCACCGTGGTACAGCGCCCCGGGATGCCGTCTGGAGCCCGGATGC  
 CCCACCAGGGGGCGCCATGGGCCCCCGGGCTCCCCGTACATGGGCAGCCCCGCCGTGCGACCCGGCCT  
 GGCCCCCGGGCATGGAGCCCCCGCAAGCGAGCAGCGCCCCCGCCGGGCAGAGCCAGGCACAGAGC  
 CAGGGCCAGCCGGTGCCACCGCCCCCGCGGGAGCCGCAGTGCCAAGAGGAGGAAGATGGCTGACAAA  
 TCCTCCCTCAAAGGATTCGGGAGCTGGTCCCCGAGTCCCAGGCTTACATGGACCTTTGGCATTGAGAG  
 GAAACTGGATCAAACCATCATGCGGAAGCGGGTGGACATCCAGGAGGCTCTGAAGAGGCCATGAAGCAA  
 AAGCGGAAGCTGCGACTCTATATCTCCAACACTTTTAAACCTGCGAAGCCTGATGCTGAGGATTCGACG  
 GCAGCATTGCCTCCTGGGAGCTACGGGTGGAGGGGAAGCTCCTGGATGATCCCAGCAAACAGAAGCGGAA  
 GTTCTCTTTCTTCAAGAGTTTGGTCATCGAGCTGGACAAAGATCTTTATGGCCCTGACAACACCTC  
 GTTGAGTGGCATCGACACCCACGACCCAGGAGACGGACGGCTTCCAGGTGAAACGGCCTGGGGACCTGA  
 GTGTGCGCTGCACGCTGCTCCTCATGCTGGACTACCAGCCTCCCCAGTTCAAACTGGATCCCCGCCTAGC  
 CCGGCTGCTGGGGCTGCACACACAGAGCCGCTCAGCCATTGTCCAGGCCCTGTGGCAGTATGTGAAGACC  
 AACAGGCTGCAGGACTCCCATGACAAGGAATACATCAATGGGGACAAGTATTTCCAGCAGGTAACCTCTC  
 TCCTGAACCTTGGATCTGGGGAGCAGGGGAGTTCTCCAGCAGGGGAAGTACCTTACCAAGGTAACCTA  
 CCACCCCTCCCTTCTAGATTCC

**ACGCGT**ACGCGGCCGCTCGAGCAGAAACTCATCTCAGAAGAGGATCTGGCAGCAAATGATATCCTGGATT  
 ACAAGGATGACGACGATAAGGTTTAA



[View online »](#)

**Protein Sequence:** >RC222044 representing NM\_003078  
Red=Cloning site Green=Tags(s)

MTPGLQHPPTVVQRPGMPGARMPHQGAPMGPPGSPYMGSPA VRPGLAPAGMEPARKRAAPPPGQSQAQS  
 QGQPVPTAPARSRS AKRRK MADKILPQRIRELVPESQAYMDLLAFERKLDQTIMRKRVDIQEALKRPMKQ  
 KRKLRLYISNTFNPAKPAEDSDGSIASWELRVEGKLLDDPSKQKRKFSFFKSLVIELDKDLYGPDNHL  
 VEWHRTPTTQETDGFQVKRPGDLSVRCTLLMLDYQPPQFKLDPRLARLLGLHTQSRSAIVQALWQYVKT  
 NRLQDSDHKEYINGDKYFQQVTSLLNPGIWGAGGVLQQGKYLYQGNYPSSLDS

TRTRPLEQKLISEEDLAANDILDYKDDDDKV

**Chromatograms:** [https://cdn.origene.com/chromatograms/mg3306\\_h07.zip](https://cdn.origene.com/chromatograms/mg3306_h07.zip)

**Restriction Sites:** SgfI-MluI

**Cloning Scheme:**



**ACCN:** NM\_003078

**ORF Size:** 353 bp

**OTI Disclaimer:** The molecular sequence of this clone aligns with the gene accession number as a point of reference only. However, individual transcript sequences of the same gene can differ through naturally occurring variations (e.g. polymorphisms), each with its own valid existence. This clone is substantially in agreement with the reference, but a complete review of all prevailing variants is recommended prior to use. [More info](#)

**OTI Annotation:** This clone was engineered to express the complete ORF with an expression tag. Expression varies depending on the nature of the gene.

**Components:** The ORF clone is ion-exchange column purified and shipped in a 2D barcoded Matrix tube containing 10ug of transfection-ready, dried plasmid DNA (reconstitute with 100 ul of water).

**Reconstitution Method:**

1. Centrifuge at 5,000xg for 5min.
2. Carefully open the tube and add 100ul of sterile water to dissolve the DNA.
3. Close the tube and incubate for 10 minutes at room temperature.
4. Briefly vortex the tube and then do a quick spin (less than 5000xg) to concentrate the liquid at the bottom.
5. Store the suspended plasmid at -20°C. The DNA is stable for at least one year from date of shipping when stored at -20°C.

**RefSeq Size:** 1728 bp

**RefSeq ORF:** 1413 bp

**Locus ID:** 6604

**UniProt ID:** [Q6STE5](#)

**Cytogenetics:** 7q36.1

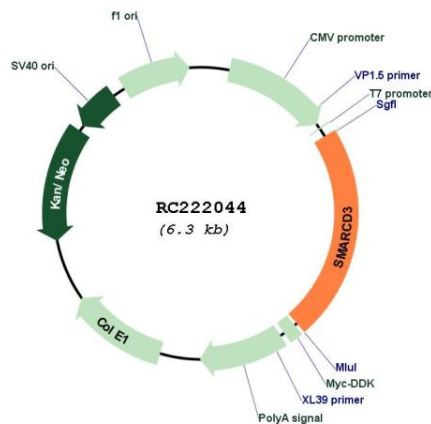
**Domains:** SWIB

**Protein Families:** Druggable Genome, Transcription Factors

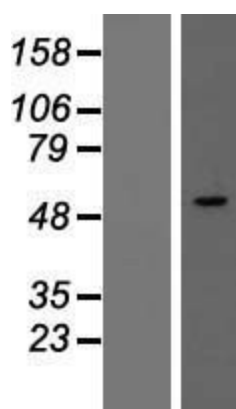
**MW:** 37.56 kDa

**Gene Summary:** The protein encoded by this gene is a member of the SWI/SNF family of proteins, whose members display helicase and ATPase activities and which are thought to regulate transcription of certain genes by altering the chromatin structure around those genes. The encoded protein is part of the large ATP-dependent chromatin remodeling complex SNF/SWI and has sequence similarity to the yeast Swp73 protein. Multiple alternatively spliced transcript variants have been found for this gene, but the biological validity of some variants has not been determined. [provided by RefSeq, Jul 2008]

### Product images:



Circular map for RC222044



Western blot validation of overexpression lysate (Cat# [LY418910]) using anti-DDK antibody (Cat# [TA50011-100]). Left: Cell lysates from untransfected HEK293T cells; Right: Cell lysates from HEK293T cells transfected with RC222044 using transfection reagent MegaTran 2.0 (Cat# [TT210002]).