

Product datasheet for **RC222034**

RAVER1 (NM_133452) Human Tagged ORF Clone

Product data:

Product Type:	Expression Plasmids
Product Name:	RAVER1 (NM_133452) Human Tagged ORF Clone
Tag:	Myc-DDK
Symbol:	RAVER1
Mammalian Cell Selection:	Neomycin
Vector:	pCMV6-Entry (PS100001)
E. coli Selection:	Kanamycin (25 ug/mL)



[View online »](#)

ORF Nucleotide Sequence:

>RC222034 representing NM_133452
 Red=Cloning site Blue=ORF Green=Tags(s)

TTTTGTAATACGACTCACTATAGGGCGGCCGGGAATTCGTCGACTGGATCCGGTACCGAGGAGATCTGCC
 GCC**CGGATCGCC**

ATGCCGCTCCGCCCGGCTCGTGGTCCCAGAAGCGCCGGGTTCCCAAGATGGCGCGGACGTGTCCG
 TTA CTACCGGCCCGCTGAGCCCTAAGTCTGGGGCCGAAGTCGAAGCCGGCGATGCCGCGAGCGCCG
 GGCGCCGGAAGAAGAGCTGCCGCTCTAGATCCAGAAGAGATCCGAAACGCCTGGAACACACCGAGCGC
 CAGTTCGGTAACCGCCGCAAGATACTGATCCGGGGCTCCCGGGGACGTGACCAACCAGGAAGTACATG
 ACCTGCTCAGTACTATGAGCTCAAATACTGTTTTGTGGACAAATACAAAGGGACAGCCTTCGTGACCT
 GCTGAATGGGAGCAGGCCGAGGCCGAATCAATGCTTTCCACCAGAGCCGCTGCGGGAGCGTGAAGT
 TCGGTGCAGTGCAGCCACGGATGCCCTGCTGTGTGGCCAACTGCCCCACGCTCACACAGCAGC
 AGTTCGAGGAGCTGGTGGGCCCTTCGGCAGCTGGAGCGCTGCTTCTGGTCTACAGTGAAGCGACTGG
 CCAATCCAAGGGCTATGGCTTTGCTGAGTACATGAAGAAGGACTCGGCTGCCGTGCCAAGTCGGACCTG
 CTGGGCAAGCCGCTGGGACCAGCACCTCTACGTGACTGGACGGATGCCGGGCAACTGACGCCTGCC
 TTCTCCACTCCCCTGCCTCTGTGTGGACCGCTGCCACCTGGCTTCAACGATGTGGACGCTCTGTGCCG
 GGCGTGTGAGCTGTCCACAGCCACCTTCTGCCAGTGGCGTGGCCAGGATGGGACGTGAAGGGC
 TTCGCGGTGCTGGAGTATGAGACGGCTGAGATGGCGGAGGAGGCACAGCAGCAGCGGACGGCCTGTCCC
 TGGGGGGCAGCCACTGCGAGTCTCCTTCTGCGCCCTGGGCCCCCGCCGCGAGTATGTGGCCGCTCT
 CATCGTGGCCAGGCCACGGCCCTCAATCGGGGAAGGGACTCTCCCGAGCCCAACATCTGCAGCTG
 GGAAGCAGGGCTCTCTGGGTGCCCCCGCCAGCCATGCCGCTGCTCAATGGGCCAGCCCTGTCCACGGCGC
 GTTGCAGCTCGCCCTGCAGACCCAGGGCCAGAAGAAGCCCGCATCTGGGAGACTCACCCCTGGGCGCC
 CTCCAGCTGGGGCCAGCCAGCCAAACCCCTCTCGGGGAGTGCCTGCAGGAGGGGCGCTGCCCCGG
 AGCTGCCGCCCGCGGAGGGAAGCCACCACCCCTGCTGCCATCCGTGCTTGGCCCTGCTGGGGGTGACCG
 GGAGGCCCTGGGCTTGGTCCCCAGCGGCCAGCTCACTCTCCCGCCGCCCTGTGGGCTCCGAGGC
 TCTGGCCTCAGAGGCTCCAGAAAGACAGTGGCCTCTGCCGACGCCCCCTGGGTCTCACTGCTGGGG
 AGCCCCCAAGGACTACCGATTCCCCTGAATCCCTACCTGAACCTACACAGCCTGCTCCCGCCAGCAA
 CCTGGCGGTAAAGAGGCCCGGGCTGGGAGGCGCCGGGAGAAGCCGCCAGCTGAGGGCCCCCA
 ACTAACCCCCAGCCCTGGAGGTGGCAGCAGCAGCAGCAAAGCCTTCCAGCTCAAGTCCGCTGCTCA
 GCCCCTCAGCAGCGCCGCTGCCCCGAACAGGACTGTCTGACAGCTACAGCTTCCACTACCCCTC
 GGACATGGGACCTCGGGGCTTCTCCACCCACGGGAACAGCCCTTGGGCTCACGGACCCAGCCGA
 CACAAGATGTCCCCCGCCAGTGGCTTCGGCGAACGGAGCAGCGGTGGGAGTGGCGGGGGCCCCCTGT
 CTCACTTCTATTAGGCTCGCCACTTCTACTTACCAGCGCCTGCAGGCTGGCCTCAAGCAGAGCCA
 CCTCAGTAAGGCAATCGGCTCTTCCCGCTGGGTCCGGAGAAGGGCTCTGGGCTCAGCCCCGGGCT
 AATGGTCACAGCCACTGCTGAAGACCCACTGGGCGCCAGAAACGCAGCTTTGCCACCTGCTGCCCT
 CGCCGAGCCAGCCAGAAGGCAGTATGTGGCCAGCACTCCAGGGCTCGGCGCCACTACGCGGA
 CTCCTACCTGAAGCGGAAGAGGATTTTC

ACGCGTACGCGGCCGCTCGAGCAGAACTCATCTCAGAAGAGGATCTGGCAGCAAATGATATCCTGGATT
 ACAAGGATGACGACGATAAGGTTTAA

Protein Sequence: >RC222034 representing NM_133452
Red=Cloning site Green=Tags(s)

MPLRPGSLVPEGAGFPKMAADVSVTHRPP LSPKSGAEVEAGDAAERRAPEEELPPLDPEEIRKRLEHTER
 QFRNRKILIRGLPGDVTNQEVHDLLSDYELKYCFVDKYKGTAFVTLNNGEQAEAAINAFHQSRRLREREL
 SVQLQPTDALLCVANLPPSLTQQQFEELVRPFGSLERCFLVYSERTGQSKGYGFAEYMKKDSAARAKSDL
 LGKPLGPRTL YVHWTADAGQLTPALLHSRCLCVDR LPPGFNDVDALCRALSAVHSPTFCQLACGQDQGLKG
 FAVLEYETAEMAEQAQQADGLSLGGSHLRV SFCAPGPPGRSMLAALIAAQATALNRGKLLPEPNILQL
 LNNLGPSASLQLLL NPLLHGSAGGKQGLLGAPPAMPLLN GPALSTALLQLALQTQGQKPGILGDSPLGA
 LQPGAQAPANLLGELPAGGGLPELPPRRGKPP LPSVLGPAGGDREALGLGPPAAQLTPPPAPVGLRG
 SGLRGLQKDSGPLTPPGVSLLEPPKDYRIPLN PYLNLHSLLPASNLAGKEARGWGGAGRSRRPAEGPP
 TNPPAPGGSSSKAFQLKSRLSPLSSARLPPEPGLSDSY SFDYPSDMGPRRLF SHPREPALGPHGPSR
 HKMSPPPSGFGERSGGSGGGLSHFYSGSPTS YFTSGLQAGLKQSHLSKAIGSSPLGSGEGLLGLSPGP
 NGHSHLLKTP LGGQKRFAHLLPSPEPSPEGSYV GQHSQGLGGHYADSYLKRKRIF

TRTRPLEQKLISEEDLANDILDYKDDDDKV

Chromatograms: https://cdn.origene.com/chromatograms/mk8039_d01.zip

Restriction Sites: SgfI-MluI

Cloning Scheme:

Cloning sites used for ORF Shuttling:



* The last codon before the Stop codon of the ORF

ACCN: NM_133452

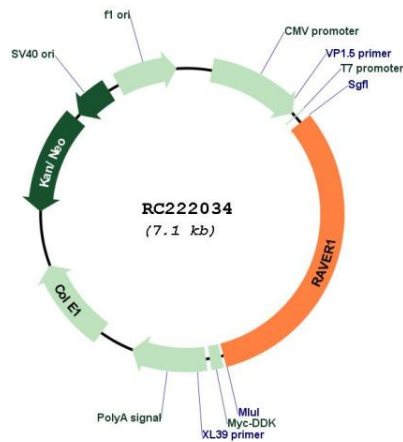
ORF Size: 2268 bp

OTI Disclaimer: The molecular sequence of this clone aligns with the gene accession number as a point of reference only. However, individual transcript sequences of the same gene can differ through naturally occurring variations (e.g. polymorphisms), each with its own valid existence. This clone is substantially in agreement with the reference, but a complete review of all prevailing variants is recommended prior to use. [More info](#)

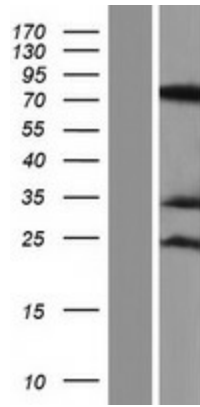
OTI Annotation: This clone was engineered to express the complete ORF with an expression tag. Expression varies depending on the nature of the gene.

- Components:** The ORF clone is ion-exchange column purified and shipped in a 2D barcoded Matrix tube containing 10ug of transfection-ready, dried plasmid DNA (reconstitute with 100 ul of water).
- Reconstitution Method:**
1. Centrifuge at 5,000xg for 5min.
 2. Carefully open the tube and add 100ul of sterile water to dissolve the DNA.
 3. Close the tube and incubate for 10 minutes at room temperature.
 4. Briefly vortex the tube and then do a quick spin (less than 5000xg) to concentrate the liquid at the bottom.
 5. Store the suspended plasmid at -20°C. The DNA is stable for at least one year from date of shipping when stored at -20°C.
- RefSeq:** [NM_133452.2](#), [NP_597709.2](#)
- RefSeq Size:** 3606 bp
- RefSeq ORF:** 2220 bp
- Locus ID:** 125950
- UniProt ID:** [Q8IY67](#)
- Cytogenetics:** 19p13.2
- MW:** 79.4 kDa
- Gene Summary:** Cooperates with PTBP1 to modulate regulated alternative splicing events. Promotes exon skipping. Cooperates with PTBP1 to modulate switching between mutually exclusive exons during maturation of the TPM1 pre-mRNA (By similarity).[UniProtKB/Swiss-Prot Function]

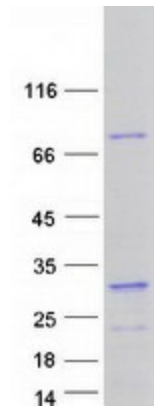
Product images:



Circular map for RC222034



Western blot validation of overexpression lysate (Cat# [LY408791]) using anti-DDK antibody (Cat# [TA50011-100]). Left: Cell lysates from untransfected HEK293T cells; Right: Cell lysates from HEK293T cells transfected with RC222034 using transfection reagent MegaTran 2.0 (Cat# [TT210002]).



Coomassie blue staining of purified RAVR1 protein (Cat# [TP322034]). The protein was produced from HEK293T cells transfected with RAVR1 cDNA clone (Cat# RC222034) using MegaTran 2.0 (Cat# [TT210002]).