

## Product datasheet for **RC222027**

### SP3 (NM\_003111) Human Tagged ORF Clone

#### Product data:

Product Type:	Expression Plasmids
Product Name:	SP3 (NM_003111) Human Tagged ORF Clone
Tag:	Myc-DDK
Symbol:	SP3
Synonyms:	SPR2
Mammalian Cell Selection:	Neomycin
Vector:	pCMV6-Entry (PS100001)
E. coli Selection:	Kanamycin (25 ug/mL)



[View online »](#)

**ORF Nucleotide  
Sequence:**

>RC222027 representing NM\_003111  
 Red=Cloning site Blue=ORF Green=Tags(s)

TTTTGTAATACGACTCACTATAGGGCGGCCGGGAATTCGTCGACTGGATCCGGTACCGAGGAGATCTGCC  
 GCC**CGCATCGCC**

ATGACCGCTCCCGAAAAGCCCGTGAACAAGAGGAAATGGCTGCCTTGGACGTGGATAGCGCGCGCGCG  
 GTGGCGCGCGCGGCCACGGCGAGTATCTGCAGCAGCAGCAACAGCACGGAAACGGTGCGGTGGCGGC  
 GGCAGCGCGGCCAGGACACTCAGCCGTACCCTCGCTCTGCTGGCCGCTACCTGCAGCAAGATAGGG  
 CCGCCATCGCCGGGCGACGACGAGGAGGAGCGGCCGCCGAGCCGGGGCCCGCCGCCCGGAGCGA  
 CAGGTGATTTGGCTTCTGCACAGTTAGGAGGAGCACAAACCGATGGGAGGTTTTGTGAGCCACACCTAC  
 AACTATAAAAGATGAAGCTGGTAATCTAGTCCAGATTCGAAGTGTGCTACTTCAAGTGGCAGTATGTT  
 CTTCCCTTCAGAATTTGCAGAATCAACAAATATTTCCGTTGCACCAGGATCAGATTCATCAATGGT  
 CAGTGCCAGTGTCAATATCAAGTGATACCACAGATCCAGTCAGCAGATGGTCAGCAGGTTCAAATGG  
 TTTACAGGCTTTCAGATAATGGGGTATAAATCAAGAAAGCAGTCAAATTCAGATCATTCTGGCTCT  
 AATCAAACCTTACTTGCCTCTGGAACACCTTCTGCTAACATCCAGAATCTCATACCACAGACTGGTCAAG  
 TCCAGGTTCAAGGAGTTGCAATTTGGTGGTTCATCTTTTCTGGTCAAACCAAGTAGTTGCTAATGTGCC  
 TCTTGGTCTGCCAGGAAATATTACGTTTGTACCAATCAATAGTGTGATCTAGATTTCTTTGGGACTCTG  
 GGCAGTTCTCAGACAATGACTGCAGGCATTAATGCCGACGGACATTTGATAAACACAGGACAAGCTATGG  
 ATAGTTACAGCAATTCAGAAAGGACTGGTGAGCGGGTTTCTCCTGATATTAATGAACTAATACTGATAC  
 AGATTTATTTGTCCAACATCCTCTTATCACAGTTGCCTGTTACGATAGATAGTACAGGTATATTACAA  
 CAAAACACAAATAGCTTGACTACATCTAGTGGCAGGTTCACTTCTCAGATCTTCAGGAAATATATCC  
 AGTCGCCTGTTTCTGAAGAGACACAGGCACAGAATATTCAGGTTTCTACAGCACAGCCTGTTGTACAGCA  
 TCTACAACCTTCAAGAGTCTCAGCAGCCAACCAAGTCAAGCCCAAATTTGTGCAAGGATTACACCACAGACA  
 ATCCATGGTGTGAAGCCAGTGGTCAAATATATCACAACAGGCTTTGCAAAATCTTCAGTTGCAGCTGA  
 ATCCTGGAACCTTTTAAATTCAGGCACAGACAGTGACCCCTTCTGGACAGGTAACCTGGCAAACGTTTCA  
 AGTACAAGGGTCCAGAACTTGCAGAAATTTGCAAATACAGAATACTGCTGCCAACAAATAACTTTGACG  
 CCTGTTCAAACCCTCACACTTGGTCAAGTTGCGGCAGGTGGAGCCTTCACTTCAACTCCAGTTAGTCTAA  
 GCACTGGTCAGTTGCCAAATCTACAAACAGTTACAGTGAAGTCTATAGATTTCTGCTGGTATACAGCTACA  
 TCCAGGAGAGAATGCTGACAGTCTGCAGATATTAGGATCAAGGAAGAAGAACCTGATCCTGAAGAGTGG  
 CAGCTCAGTGGTATTCTACCTTGAATACCAATGACCTAACACACTTAAGAGTACAGGTGGTAGATGAAG  
 AAGGGGACCAACAACATCAAGAAGGAAAAAGACTTCGGAGGGTAGCTTGACCTGTCCCAACTGTAAGA  
 AGGTGGTGAAGAGGTACCAATCTTGGGAAAAAGAACACATTTGTATATACCAGGATGTGGTAAA  
 GTCTATGGGAAGACCTCACATCTGAGAGCTCATCTGCGTTGGCATTCTGGAGAACGCCCTTTTGTGTTGA  
 ACTGGATGTAAGTGGTAAAAGATTTACTCGAAGTGATGAATTACAGAGGCACAGAAGAACACATACAGG  
 TGAGAAGAAATTTGTTTCCAGAATGTTCAAACGCTTTATGAGAAGTGACCACCTTGCCAAACATATT  
 AAAACACACCAGAATAAAAAAGGATTTCACTCTAGCAGTACAGTGTGGCATCTGTGGAAGCTGCGCGAG  
 ATGATACTTTGATTACTGAGGAGGAACAACGCTTATCCTTGCAAATATCAACAAGGTTCTGTTTCAGG  
 GATAGGAACTGTTAATACTTCCGCCACCAGCAATCAAGATATCCTTACCAACTGAAATACCTTTACAG  
 CTTGTCACAGTTTCTGGAAATGAGACAATGGAG

**ACGCGT**ACGCGGCCGCTCGAGCAGAACTCATCTCAGAAGAGGATCTGGCAGCAAATGATATCCTGGATT  
 ACAAGGATGACGACGATAAGGTTTAA

**Protein Sequence:** >RC222027 representing NM\_003111  
Red=Cloning site Green=Tags(s)

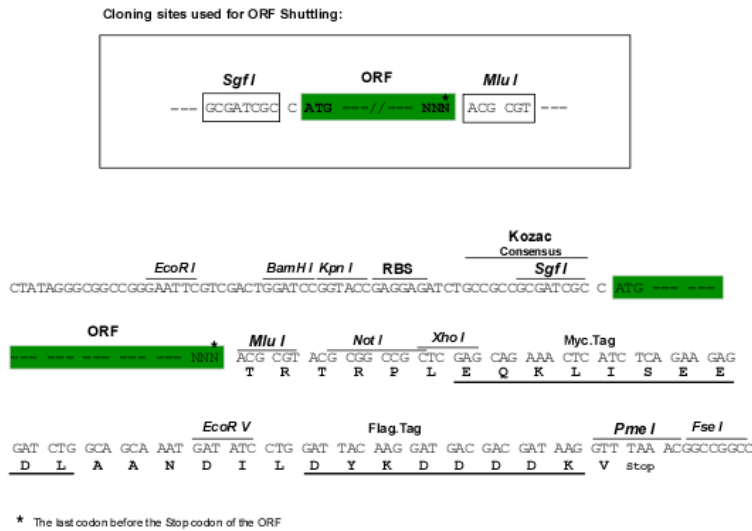
MTAPEKPKQEEMAALDVDSGGGGGGGGHGEYLQQQQQHNGAVAAAAAQTQPSPLALLAATCSKIG  
PPSPGDDEEEAAAAGAPAAAGATGDLASAQLGGAPNRWEVLSATPTTIKDEAGNLVQIPSAATSSGQYV  
LPLQNLQNLQIFSVAPGSDSSNGAVSSVQYQVIPQIQSADGQQVQIGFTGSSDNGGINQESSQIQIIPGS  
NQTLASGTPSANIQNLIPQTGQVQVQVAIGGSSFPQTQVVANVPLGLPGNITFVPINSVDLSLGLS  
GSSQMTAGINADGHLINTGQAMDSSDINSERTGERVSPDINETNTDLDLFDVPTSSSSQLPVTIDSTGILQ  
QNTNSLTSSGQVHSSDLQGNYSQSPVSEETQAQNIQVSTAQPVVQHLQLQESQQPTSQAQIVQGITPQT  
IHGVQASGQNISQQALQNLQLNPGTFLIQAQVTPSGQVQVTFQVQGVQNLQNLQIQNTAAQQITLT  
PVQTLTLGQVAAGGAFSTPVSLSGQLPNLQTVTVNSIDSAGIQLHPGENADSPADIRIKEEEDPEEW  
QLSGDSTLNTNDLTHLRVQVVDEEGDQQHQEGKRLRRVACTCPNCKEGGGRGNLGGKKQHIHIPGCGK  
VYGKTSHLRAHLRWHSGERPFVCNWMYCGKRFTRDELQRHRRHTGKFFVCEPSKRFMRSDHLAKHI  
KTHQNKGGIHSSTVLASVEAARDTLITAGGTLILANIQQGSVSGIGTVNTSATSNDILTNTIPLQ  
LVTVSGNETME

TRTRPLEQKLISEEDLAANDILDYKDDDDKV

**Chromatograms:** [https://cdn.origene.com/chromatograms/mg2413\\_e01.zip](https://cdn.origene.com/chromatograms/mg2413_e01.zip)

**Restriction Sites:** SgfI-MluI

Cloning Scheme:



ACCN: NM\_003111

ORF Size: 2343 bp

OTI Disclaimer: The molecular sequence of this clone aligns with the gene accession number as a point of reference only. However, individual transcript sequences of the same gene can differ through naturally occurring variations (e.g. polymorphisms), each with its own valid existence. This clone is substantially in agreement with the reference, but a complete review of all prevailing variants is recommended prior to use. [More info](#)

OTI Annotation: This clone was engineered to express the complete ORF with an expression tag. Expression varies depending on the nature of the gene.

Components: The ORF clone is ion-exchange column purified and shipped in a 2D barcoded Matrix tube containing 10ug of transfection-ready, dried plasmid DNA (reconstitute with 100 ul of water).

**Reconstitution Method:**

1. Centrifuge at 5,000xg for 5min.
2. Carefully open the tube and add 100ul of sterile water to dissolve the DNA.
3. Close the tube and incubate for 10 minutes at room temperature.
4. Briefly vortex the tube and then do a quick spin (less than 5000xg) to concentrate the liquid at the bottom.
5. Store the suspended plasmid at -20°C. The DNA is stable for at least one year from date of shipping when stored at -20°C.

**Note:** Plasmids are not sterile. For experiments where strict sterility is required, filtration with 0.22um filter is required.

**RefSeq:** [NM\\_003111.4](#)

**RefSeq Size:** 3920 bp

**RefSeq ORF:** 2346 bp

**Locus ID:** 6670

**UniProt ID:** [Q02447](#)

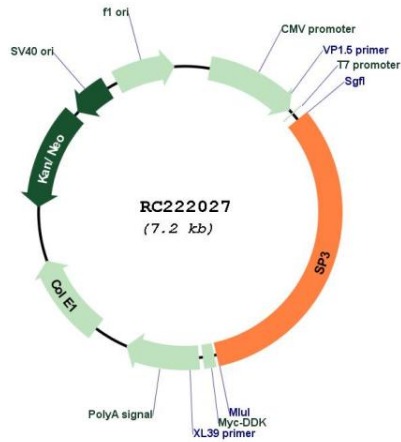
**Cytogenetics:** 2q31.1

**Protein Families:** Druggable Genome, Transcription Factors

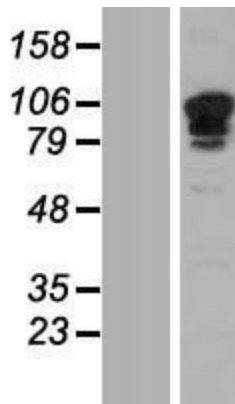
**MW:** 81.7 kDa

**Gene Summary:** This gene belongs to a family of Sp1 related genes that encode transcription factors that regulate transcription by binding to consensus GC- and GT-box regulatory elements in target genes. This protein contains a zinc finger DNA-binding domain and several transactivation domains, and has been reported to function as a bifunctional transcription factor that either stimulates or represses the transcription of numerous genes. Transcript variants encoding different isoforms have been described for this gene, and one has been reported to initiate translation from a non-AUG (AUA) start codon. Additional isoforms, resulting from the use of alternate downstream translation initiation sites, have also been noted. A related pseudogene has been identified on chromosome 13. [provided by RefSeq, Feb 2010]

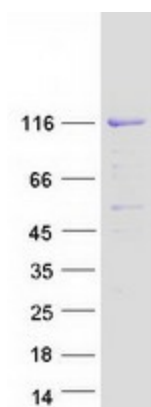
Product images:



Circular map for RC222027



Western blot validation of overexpression lysate (Cat# [LY401084]) using anti-DDK antibody (Cat# [TA50011-100]). Left: Cell lysates from untransfected HEK293T cells; Right: Cell lysates from HEK293T cells transfected with RC222027 using transfection reagent MegaTran 2.0 (Cat# [TT210002]).



Coomassie blue staining of purified SP3 protein (Cat# [TP322027]). The protein was produced from HEK293T cells transfected with SP3 cDNA clone (Cat# RC222027) using MegaTran 2.0 (Cat# [TT210002]).