

## Product datasheet for **RC222025**

### ZNF285 (NM\_152354) Human Tagged ORF Clone

#### Product data:

Product Type:	Expression Plasmids
Product Name:	ZNF285 (NM_152354) Human Tagged ORF Clone
Tag:	Myc-DDK
Symbol:	ZNF285
Synonyms:	ZNF285A
Mammalian Cell Selection:	Neomycin
Vector:	pCMV6-Entry (PS100001)
E. coli Selection:	Kanamycin (25 ug/mL)



[View online »](#)

**ORF Nucleotide Sequence:**

>RC222025 ORF sequence  
 Red=Cloning site Blue=ORF Green=Tags(s)

TTTTGTAATACGACTCACTATAGGGCGGCCGGAATTCGTCGACTGGATCCGGTACCGAGGAGATCTGCC  
 GCC**CGGATCGCC**

ATGATTAAGTTCAGAAAGGGTGACATTCAAGGATGTGGCTGTTGTCTTACCAAGGAAGAGCTGGCAC  
 TATTGGATAAAGCCAGATAAACCTGTACCAAGATGTGATGCTGGAAAACCTCAGGAACCTCATGTTAGT  
 GAGAGACGGGATTAACAACATTTTGAATCTTCAGGCAAAGGGTTAAGTTACCTTTCGCAAGAAGTG  
 CTTCAATTGCTGGCAGATTTGAAACAAAGGATCCGGGATTTAACTGTGAGTCAGGATTATATCGTGAACC  
 TTCAAGAAGAGTGTCCCCACATTTAGAAGATGTTCCCTCAGTGAAGAGTGGCAGGCATTTCTCTTCA  
 GATTTCTGAAAATGAAAATATGTAGTAAATGCCATTATCAAAAATCAAGATATCACAGCATGGCAAAGC  
 CTGACACAGGTTCTTACCCAGAATCGTGGAGGAAAGCCAACATAATGACCGAGCCCGAAGCTCAGG  
 GAAGATAAAGGGAATTTACATGGAAGAGAAATTTACAGACGTGCTCAGCATGATGACAGCCTCAGTTG  
 GACCTCATGTGATCATCATGAGTCCAAGAATGTAAGGAGAGGACCCTGGTAGACATCCAGCTGTGGG  
 AAAAATTGGGTATGAAATCAACGGTTGAAAAAGTAATGCGGCCATGTATTACCACAGCCTTCCCAT  
 GTAATAACTGTGGGTGGCCTTTCAGATGATACAGATCCTCATGTCCATCACAGCACTCACCTAGGAGA  
 AAAATCTTATAAATGTGACCAAGTATGAAAGAACTTTAGTCAGAGCCAAGATCTTATCGTTCATTGTA  
 ACTCACTCTGGCAAGACTCCCTATGAATTCACGAATGGCCTATGGGCTGCAAACAGAGCTCAGACCTTC  
 CCAGATATCAGAAAGTCTCTCAGGAGACAAACCTACAATGTAAGAAATGTGGCAAGGGCTTCAGGCG  
 CAGCTCTCCCTTCAACCATCATCGAGTCCACACAGGGGAGATGCCCTACAAATGCGATGAATGTGGG  
 AAAGGGTTTGGATTTAGGTCACTTCTTTGTATTCATCAGGGAGTACACACAGGAAAAAGCCCTATAAT  
 GTGAAGAGTGTGGGAAGGGCTTTGATCAGAGCTCAACCTTCTTGTCCATCAGAGATCCACATGGAGA  
 GAAGCCCTACAAATGCAAGTGTGGCAAGTCTTTAGTTCAAGCTCCGTTCTTCAAGTCCACTGGAGG  
 TTTACACAGGGGAGAAACCATATAGGTGTGGTGTGAGTGTGAAAGGGCTCAGCCATGTACACACCTTC  
 ACATTCACCAGAGAGTCCACACAGGGGAGAAACCATACAATGCAATGTGTGTGGAAGGATTTTGCCTA  
 TAGCTCTGTTCTTCACTCATCAGAGAGTTCACACTGGAGAAAAACCATATAAATGTGAAGTGTGTGGA  
 AAGTGCTTCAAGTACAGTTCATATTTTCACTTACATCAAAGAGATCACATCAGAGAGAAACCATATAAAT  
 GTGATGAGTGTGGTAAAGGCTTCAGCCGAATTCAGATCTTAATGTTACCTCAGAGTCCACACAGGAGA  
 GAGGCCCTATAAGTGAAGGCATGTGGTAAAGGCTTCAGTCGTAATTCATACCTCCTTGGCCATCAGAGA  
 GTGCATATAGATGAGACACAGTACACACTGTGAGCGTGAAAGGACCTTCTGACTCATCAAAGACTAC  
 ATGAGCAGAGAGAAACATTA

**ACGCGT**ACGCGGCCGCTCGAGCAGAAACTCATCTCAGAAGAGGATCTGGCAGCAAATGATATCCTGGATT  
 ACAAGGATGACGACGATAAGGTTTAA

**Protein Sequence:**

>RC222025 protein sequence  
 Red=Cloning site Green=Tags(s)

MIKFQERVTFKDVAVVFTKEELALLDKAQINLYQDVMLENFRNMLVRDGIKNNILNLQAKGLSYLSQEV  
 LHCWQIWKQIRIDLTVSQDYIVNLQEECSPHLEDVSLSEEWAGISLQISENENYVVAIKNQDITAWQS  
 LTQVLTPESWRKANIMTEPQNSQGRYKGIYMEELKYYRAQHDDSLSWTSCDHHSQECKGEDPGRHPSCG  
 KNLGMKSTVEKRNAHVLPQFPNCNCGVAFADDTDPHVHSTHLGEKSYKCDQYKKNFSQSQDLIVHCK  
 THSGKTPYEFHEWPMGCKQSSDLPRYQKVSSGDKPYKCKEKGKGFRRSSSLHNHHRVHTGEMPYKCECG  
 KGFGRSLLCIHQGVHTGKPKYKCECGKGFQSSNLLVHQRVHTGEKPYKCECGKCFSSSVLQVHWR  
 FHTGEKPYRCGECGKGFQSQTHLHIHQRVHTGEKPYKCNVCGKDFAYSSVLHTHQRVHTGEKPYKCEVCG  
 KCFSSSYFHLHQRDHIREKPYKCECGKGFSRNSDLNVHLRVHTGERPYKCKACGKGFSRNSYLLAHQR  
 VHIDETQYTHCERKDLLTHQRLHEQRETL

**TRTRPLEQKLISEEDLAANDILDYKDDDDKV**

**Chromatograms:**

[https://cdn.origene.com/chromatograms/mk6610\\_d03.zip](https://cdn.origene.com/chromatograms/mk6610_d03.zip)

Restriction Sites: SgfI-MluI

Cloning Scheme:



ACCN: NM\_152354

ORF Size: 1770 bp

OTI Disclaimer: The molecular sequence of this clone aligns with the gene accession number as a point of reference only. However, individual transcript sequences of the same gene can differ through naturally occurring variations (e.g. polymorphisms), each with its own valid existence. This clone is substantially in agreement with the reference, but a complete review of all prevailing variants is recommended prior to use. [More info](#)

OTI Annotation: This clone was engineered to express the complete ORF with an expression tag. Expression varies depending on the nature of the gene.

Components: The ORF clone is ion-exchange column purified and shipped in a 2D barcoded Matrix tube containing 10ug of transfection-ready, dried plasmid DNA (reconstitute with 100 ul of water).

- Reconstitution Method:
1. Centrifuge at 5,000xg for 5min.
  2. Carefully open the tube and add 100ul of sterile water to dissolve the DNA.
  3. Close the tube and incubate for 10 minutes at room temperature.
  4. Briefly vortex the tube and then do a quick spin (less than 5000xg) to concentrate the liquid at the bottom.
  5. Store the suspended plasmid at -20°C. The DNA is stable for at least one year from date of shipping when stored at -20°C.

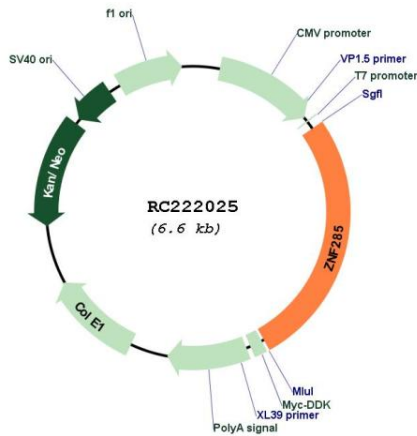
RefSeq: [NM\\_152354.6](#)

RefSeq Size: 2703 bp

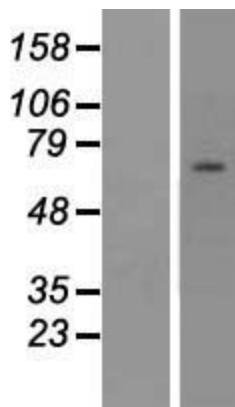
RefSeq ORF: 1773 bp

Locus ID: 26974

**UniProt ID:** [Q96NJ3](#)  
**Cytogenetics:** 19q13.31  
**Domains:** zf-C2H2  
**Protein Families:** Transcription Factors  
**MW:** 68.1 kDa  
**Gene Summary:** May be involved in transcriptional regulation.[UniProtKB/Swiss-Prot Function]

**Product images:**


Circular map for RC222025



Western blot validation of overexpression lysate (Cat# [LY407604]) using anti-DDK antibody (Cat# [TA50011-100]). Left: Cell lysates from untransfected HEK293T cells; Right: Cell lysates from HEK293T cells transfected with RC222025 using transfection reagent MegaTran 2.0 (Cat# [TT210002]).