

Product datasheet for **RC222024**

PLP2 (NM_002668) Human Tagged ORF Clone

Product data:

Product Type: Expression Plasmids
Product Name: PLP2 (NM_002668) Human Tagged ORF Clone
Tag: Myc-DDK
Symbol: PLP2
Synonyms: A4; A4LSB
Mammalian Cell Selection: Neomycin
Vector: pCMV6-Entry (PS100001)
E. coli Selection: Kanamycin (25 ug/mL)
ORF Nucleotide Sequence: >RC222024 ORF sequence
Red=Cloning site Blue=ORF Green=Tags(s)

TTTTGTAATACGACTCACTATAGGGCGCCGGGAATTCGTCGACTGGATCCGGTACCGAGGAGATCTGCC
GCC**CGATCGCC**

ATGGCGGATTCTGAGCGCCTCTCGGCTCCTGGCTGCTGGGCCGCTGCACCAACTTCTCGCGCACTCGAA
AGGGAATCCTCTGTTTCTGAGATTATATTATGCCTGGTATCCTGATCTGCTTCAGTGCCTCCACACC
AGGCTACTCCTCCTGTCGGTGATTGAGATGATCCTTGTCTATTTCTTTGTTGTCTACATGTGTGAC
CTGCACACCAAGATAACCATTCACTCAACTGGCCCTGGAGTGATTTCTCCGAACCCCTCATAGCGGCAATCC
TCTACCTGATCACCTCCATTGTTGTCCTTGTGAGAGAGGAAACCACTCCAAAATCGTCGCAGGGGTACT
GGGCTAATCGCTACGTGCCTCTTTGGCTATGATGCCTATGTCACCTTCCCGTTCCGGCAGCCAAGACAT
ACAGCAGCCCCCACTGACCCCGCAGATGGCCCGTG

ACGCGTACGCGGCCGCTCGAGCAGAACTCATCTCAGAAGAGGATCTGGCAGCAAATGATATCCTGGATT
ACAAGGATGACGACGATAAGGTTTAA

Protein Sequence: >RC222024 protein sequence
Red=Cloning site Green=Tags(s)
MADSERLSAPGCWAACTNFSRTRKGILLFAEIIILCLVILICFSASTPGYSSLSVIEMILAAIFFVVMCD
LHTKIPFINPWSDFRFLIAAILYLITSIVVLVERGNHSHKIVAGVGLIATCLFGYDAYVTFPVRQPRH
TAAPTDPADGPV

TRTRPLEQKLISEEDLAANDILDYKDDDDKV

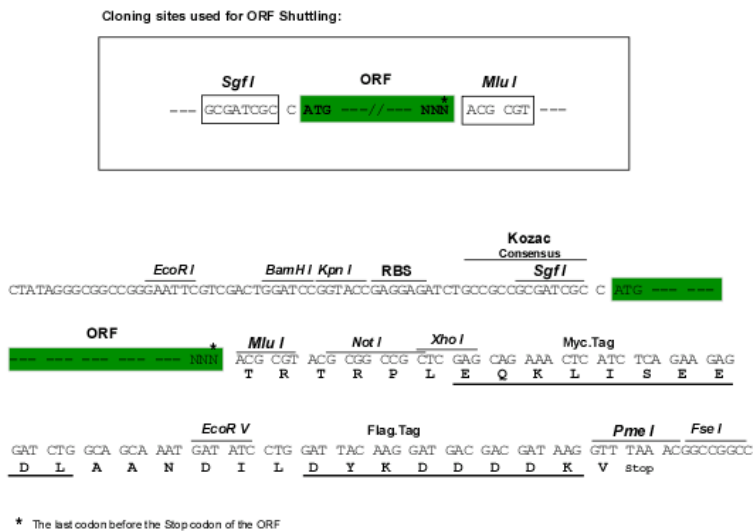
Chromatograms: https://cdn.origene.com/chromatograms/mk6457_b04.zip



[View online >](#)

Restriction Sites: SgfI-MluI

Cloning Scheme:



ACCN: NM_002668

ORF Size: 456 bp

OTI Disclaimer: The molecular sequence of this clone aligns with the gene accession number as a point of reference only. However, individual transcript sequences of the same gene can differ through naturally occurring variations (e.g. polymorphisms), each with its own valid existence. This clone is substantially in agreement with the reference, but a complete review of all prevailing variants is recommended prior to use. [More info](#)

OTI Annotation: This clone was engineered to express the complete ORF with an expression tag. Expression varies depending on the nature of the gene.

Components: The ORF clone is ion-exchange column purified and shipped in a 2D barcoded Matrix tube containing 10ug of transfection-ready, dried plasmid DNA (reconstitute with 100 ul of water).

Reconstitution Method:

1. Centrifuge at 5,000xg for 5min.
2. Carefully open the tube and add 100ul of sterile water to dissolve the DNA.
3. Close the tube and incubate for 10 minutes at room temperature.
4. Briefly vortex the tube and then do a quick spin (less than 5000xg) to concentrate the liquid at the bottom.
5. Store the suspended plasmid at -20°C. The DNA is stable for at least one year from date of shipping when stored at -20°C.

RefSeq: [NM_002668.3](#)

RefSeq Size: 1049 bp

RefSeq ORF: 459 bp

Locus ID: 5355

UniProt ID: [Q04941](#)

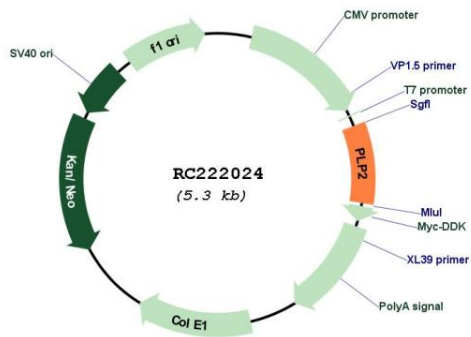
Cytogenetics: Xp11.23

Protein Families: Transmembrane

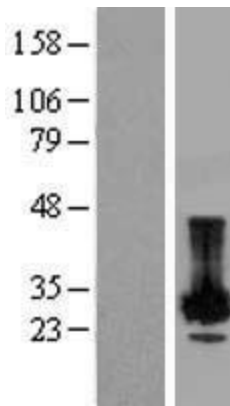
MW: 16.7 kDa

Gene Summary: This gene encodes an integral membrane protein that localizes to the endoplasmic reticulum in colonic epithelial cells. The encoded protein can multimerize and may function as an ion channel. A polymorphism in the promoter of this gene may be linked to an increased risk of X-linked cognitive disability. A pseudogene of this gene is found on chromosome 5. [provided by RefSeq, Jan 2010]

Product images:



Circular map for RC222024



Western blot validation of overexpression lysate (Cat# [LY419174]) using anti-DDK antibody (Cat# [TA50011-100]). Left: Cell lysates from untransfected HEK293T cells; Right: Cell lysates from HEK293T cells transfected with RC222024 using transfection reagent MegaTran 2.0 (Cat# [TT210002]).