

Product datasheet for **RC222020**

AP180 (SNAP91) (NM_014841) Human Tagged ORF Clone

Product data:

Product Type:	Expression Plasmids
Product Name:	AP180 (SNAP91) (NM_014841) Human Tagged ORF Clone
Tag:	Myc-DDK
Symbol:	AP180
Synonyms:	AP180; CALM
Mammalian Cell Selection:	Neomycin
Vector:	pCMV6-Entry (PS100001)
E. coli Selection:	Kanamycin (25 ug/mL)



[View online »](#)

ORF Nucleotide Sequence:

>RC222020 representing NM_014841
 Red=Cloning site Blue=ORF Green=Tags(s)

TTTTGTAATACGACTCACTATAGGGCGGCCGGAATTCGTCGACTGGATCCGGTACCGAGGAGATCTGCC
 GCC**CGGATCGCC**

ATGTCGGGCCAAACGCTCACGGATCGGATCGCCGCGCTCAGTACAGCGTTACAGGCTCTGCTGTAGCAA
 GAGCGGTCTGCAAAGCCACTACTCATGAAGTAATGGGCCCAAGAAAAAGCACCTGGACTATTTGATCCA
 GGCTACCAACGAGACCAATGTTAATATTCTCAGATGGCCGACACTCTCTTTGAGCGGGCAACAAACAGT
 AGCTGGGTGGTTGTGTTAAGGCTTTAGTGACAACACATCATCTCATGGTGCATGGAAATGAGAGATTTA
 TTCAATATTTGGCTTCTAGAAATACACTATTCAATCTCAGCAATTTTTGGACAAAAGTGGATCCCATGG
 TTATGATATGTCTACCTTATAAGGCGCTATAGTAGATATTTGAATGAAAAGGCTTTTTCTTACAGACAG
 ATGGCCTTTGATTTTCCAGGGTGAAGAAAGGGCCGATGGTGTAAATGAGGACAATGGCTCCCGAAAAGC
 TGCTAAAGAGTATGCCAATACTACAGGGACAAATTGATGCACTGCTTGAATTTGATGTGCATCCAATGA
 ACTAACAAATGGTGTCAAATGCAGCATTATGCTTCTTTCAAAGATCTTATCAAACCTTTTTGCTTGC
 TACAATGATGGTGTATTAACCTACTCGAAAAGTTTTTTGAAATGAAGAAAGGACAATGTAAGATGCTC
 TAGAAATTTACAACGATTTCTAACTAGAAATGACACGAGTGTCTGAATTTCTCAAGGTTGACAGCAAGT
 TGGTATTGATAAAGGTGACATTCTGACCTCACACAGGCTCCCAGCAGTCTTATGGAGACGCTTGAACAG
 CATCTAAATACATTAGAAGGAAAGAAACCTGGAACAATGAAGGATCTGGTGTCCCTCTCCATTAAGTA
 AGTCTTCTCCAGCCAACTGTTACGCTCCTAATTCTACACCAGCTAAAACCTATTGACACATCCCACC
 GGTTGATTTATTTGCAACTGCATCTCGGGCTGTCCAGTCAGCACTTCTAAACCTCTAGTGATCTCCTG
 GACCTCCAGCCAGACTTTTCTCTGGAGGGCAGCAGCCGCGCAGCACCAGCACCACCACCACCTGCTG
 GAGGACCACCTGCATGGGAGACCTTTTGGGAGAGGATTTCTTTGGCTGCACCTTTCTCTGTTCCCTCTGA
 AGCACAGATTTTCAAGTCCATTTTGACACCAGAACCTACCCCTCTACTACAACCTGCTGAAATTTGCAACTGCC
 TCAGTCTCTGCTCCACTACTACAACCTGTTACTGCTGTCAGTGTGAAAGTGGATCTCTTTGGAGATGCCT
 TTGAGACTTCTCTGGGAGGCCCTGCAGCATCCGAAGGGGCCCGCACCAGTACCCCAACCCCTGT
 AGCAGCAGCACTTGATGCATGTTGAGGAAATGACCCCTTTGCCCGTCTGAAGGTAGTGCAGAGGCTGCA
 CCTGAGCTGGACCTTTTGAATGAAGCCACCTGAGACCAGTGTCTGTAGTTACCCCTACAGCTAGCA
 CAGCCCTCCGGTCCCACACTGCTCCTTCTCTGCTCCTGCCGTTGCAGCTGCTGCTGCCACTAC
 TGCTGCCACCGCCGCTGCCACCACCACTACCACCCTCCGCTGCCACCGCCACCCTGCTCCTCCTGCT
 CTAGATATCTTTGGTGATTTATTTGAGTCCACTCCTGAAGTTGCTGCAGCGCCTAAGCCAGATGCTGCTC
 CTAGCATAGACCTGTTTGTACAGATGCTTTCTCCTCTCCACCACAAGGGGCTCTCCTGTGCTGAGAG
 TTCTCTCACTGCTGACCTTATCTGTGGATGCATTTGCAGCACCATCTCCTGCAACCCTGCTCGCCA
 GCAAAGGTGGATTCTTCAAGTGTATAGACCTTTTTGGGGATGCATTTGGAAGTAGCGCTTCTGAACCCC
 AACCTGCATCTCAGGCTGCTTCTAGTTCATCAGCATCGGCAGACCTACTAGTGGATTTGGGGTCTTT
 CATGGCGCTTCCCCTATCCAGTACTCCAGCTCAGATAAACCTGCTACAGCCCAATTTTGAGGCAGCT
 TTTGGGACAACGCCTTCAACTCCAGCAGCAGCTCCTTTGATCCATCAGTGTGTTGATGGTCTAGGTGATC
 TTTTGATGCCAACCATGGCACCAGCTGGCAGCCTGCACCTGTCTCAATGGTACCACCCAGTCTGCAAT
 GGCAGCCAGCAAAGCCCTTGAAGTGATCTTGATTATCTCTTGGCAGCTTAGTAGGCAATCTTGGAAAT
 TCTGGTACCACAACAAAAAGGGAGATCTTCAGTGGAAATGCTGGAGAGAAAAAGTTGACTGGTGGAGCCA
 ACTGGCAGCCTAAAGTAGCTCCAGCAACCTGGTCAAGCAGCGTTCCACCAAGTGCACCTTTGCAAGGAGC
 GTACCTCCAACCAAGTTCAGTTCCTCTGTTGCCGGGGCCCATCGGTTGGACAACCTGGAGCAGGATTT
 GGAATGCCTCCTGCTGGGACAGGCATGCCATGATGCCTCAGCAGCCGGTATGTTTGCACAGCCCATGA
 TGAGGCCCCCTTTGGAGCTGCCGCTGTACCTGGCAGCAGCTTTCTCCAAGCCCTACACCTGCCAGTCA
 GAGTCCCAAGAAACCTCCAGCAAAGGACCCATTAGCGGATCTTAACATCAAGGATTTCTTG

ACGCGTACGCGGCCGCTCGAGCAGAAACTCATCTCAGAAGAGGATCTGGCAGCAAATGATATCTGGATT
 ACAAGGATGACGACGATAAGGTTTAA

Protein Sequence: >RC222020 representing NM_014841
 Red=Cloning site Green=Tags(s)

MSGQTLTDRIAAQYSVTGSAVARAVCKATTHEVMGPKKKHLDYLIQATNETNVNIPQMADTLFERATNS
 SWVVVFKALVTHHLMVHGNERFIQYLASRNTLFNLSNFLDKSGSHGYDMSTFIRRYSRYLNEKAFSYRQ
 MAFDFARVKKGADGVMRTMAPEKLLKSMPILOGQIDALLEFDVHPNELNGVINAAFMLLFKDLIKLFAC
 YNDGVINLLEKFFEMKKGQCKDALEIYKRFLTRMTRVSEFLKVAEQVGDIDKGDIPDLTQAPSSLMETLEQ
 HLNTLEGKKPGNNEGSGAPSLSKSSPATTVTSPNSTPAKTIDTSPPVDFATASAAVPVSTSKPSSDLL
 DLQPDFSSGGAAPAPPPPAGGATAWGDLLGEDSLAALSSVPSEAQISDPFAPEPTPTTTAEIATA
 SASASTTTVTAVTAEVDLFGDAFAASPEEAPAASEGAAAPATPTPVAAALDACSGNDPFAPESESAEAA
 PELDLFAMKPPETSVPVVTPTASTAPPVPATAPSPAPAVAAAAAATTAATAAATTTTTTSAATATTAPPA
 LDIFGDLFESTPEVAAAPKPAAPSIDLFSTDAFSSPPQASVPPESSLTADLLSVDAFAAPSPATTASP
 AKVDSSGVIDLFGDAFGSSASEPQPASQAASSSSASADLLAGFGGSMFMAPSPVTPAQNNLLQPNFEAA
 FGTTPTSSSSSFDPSVFDGLDGLLMPMAPAGQPAPVSMVPPSPAMAASKALGSDLSSLASLVGNLGI
 SGTTTKGDQLQWNAGEKLLTGGANWQPKVAPATWSAGVPPSAPLQGAVPPTSSVPPVAGAPSVGQPGAGF
 GMPPAGTGMPMPQPPVMFAQPMRPPFGAAAVPGTQLSPSTPASQSPKKPPAKDPLADLNKIDFL

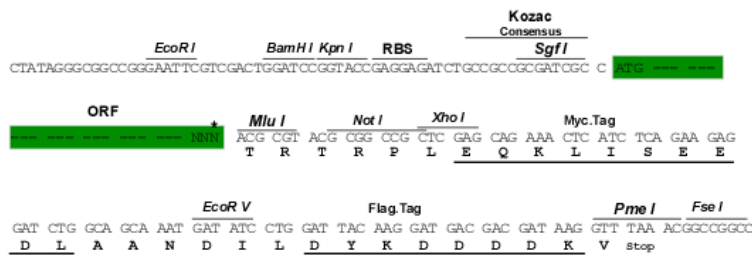
TRTRPLEQKLISEEDLAANDILDYKDDDDKV

Chromatograms: https://cdn.origene.com/chromatograms/mk6594_f07.zip

Restriction Sites: SgfI-MluI

Cloning Scheme:

Cloning sites used for ORF Shuttling:

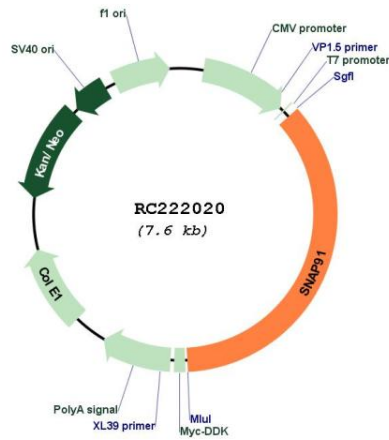


* The last codon before the Stop codon of the ORF

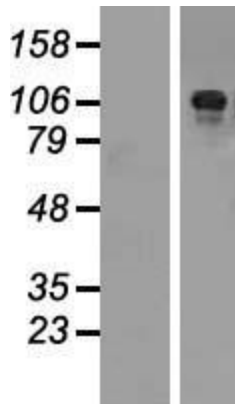
ACCN: NM_014841

ORF Size:	2721 bp
OTI Disclaimer:	The molecular sequence of this clone aligns with the gene accession number as a point of reference only. However, individual transcript sequences of the same gene can differ through naturally occurring variations (e.g. polymorphisms), each with its own valid existence. This clone is substantially in agreement with the reference, but a complete review of all prevailing variants is recommended prior to use. More info
OTI Annotation:	This clone was engineered to express the complete ORF with an expression tag. Expression varies depending on the nature of the gene.
Components:	The ORF clone is ion-exchange column purified and shipped in a 2D barcoded Matrix tube containing 10ug of transfection-ready, dried plasmid DNA (reconstitute with 100 ul of water).
Reconstitution Method:	<ol style="list-style-type: none">1. Centrifuge at 5,000xg for 5min.2. Carefully open the tube and add 100ul of sterile water to dissolve the DNA.3. Close the tube and incubate for 10 minutes at room temperature.4. Briefly vortex the tube and then do a quick spin (less than 5000xg) to concentrate the liquid at the bottom.5. Store the suspended plasmid at -20°C. The DNA is stable for at least one year from date of shipping when stored at -20°C.
RefSeq:	NM_014841.1 , NP_055656.1
RefSeq Size:	4369 bp
RefSeq ORF:	2724 bp
Locus ID:	9892
UniProt ID:	O60641
Cytogenetics:	6q14.2
Domains:	ENTH
MW:	92.3 kDa
Gene Summary:	Adaptins are components of the adapter complexes which link clathrin to receptors in coated vesicles. Clathrin-associated protein complexes are believed to interact with the cytoplasmic tails of membrane proteins, leading to their selection and concentration. Binding of AP180 to clathrin triskelia induces their assembly into 60-70 nm coats (By similarity).[UniProtKB/Swiss-Prot Function]

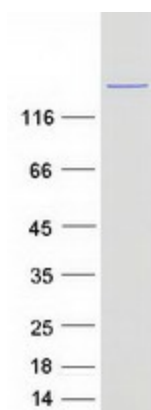
Product images:



Circular map for RC222020



Western blot validation of overexpression lysate (Cat# [LY414967]) using anti-DDK antibody (Cat# [TA50011-100]). Left: Cell lysates from untransfected HEK293T cells; Right: Cell lysates from HEK293T cells transfected with RC222020 using transfection reagent MegaTran 2.0 (Cat# [TT210002]).



Coomassie blue staining of purified SNAP91 protein (Cat# [TP322020]). The protein was produced from HEK293T cells transfected with SNAP91 cDNA clone (Cat# RC222020) using MegaTran 2.0 (Cat# [TT210002]).