

Product datasheet for **RC222004**

SMARCD3 (NM_001003801) Human Tagged ORF Clone

Product data:

Product Type:	Expression Plasmids
Product Name:	SMARCD3 (NM_001003801) Human Tagged ORF Clone
Tag:	Myc-DDK
Symbol:	SMARCD3
Synonyms:	BAF60C; CRACD3; Rsc6p
Mammalian Cell Selection:	Neomycin
Vector:	pCMV6-Entry (PS100001)
E. coli Selection:	Kanamycin (25 ug/mL)



[View online »](#)

ORF Nucleotide Sequence:

>RC222004 representing NM_001003801
 Red=Cloning site Blue=ORF Green=Tags(s)

TTTTGTAATACGACTCACTATAGGGCGGCCGGAATTCGTCGACTGGATCCGGTACCGAGGAGATCTGCC
 GCC**CGCATCGCC**

ATGGCCGCGGACGAAGTTGCCGGAGGGCGCGCAAAGCCACGAAAAGCAAACTTTTTGAGTTTCTGGTCC
 ATGGGGTGCGCCCGGGATGCCGTCTGGAGCCGGATGCCACCAGGGGCGCCATGGGCCCCCGGG
 CCCCCGTACATGGGCAGCCCCCGCTGCGACCCGGCCTGGCCCCGCGGGCATGGAGCCCGCCCAAG
 CGAGCAGCGCCCCCGCCGGGCAGAGCCAGGCACAGAGCCAGGGCCAGCCGGTGCCACCGCCCCGCGC
 GGAGCCGAGTGCCAAGAGGAGGAAGATGGCTGACAAAATCCTCCCTCAAAGGATTCGGGAGCTGGTCCC
 CGAGTCCCAGGCTTACATGGACCTTTGGCATTGAGAGGAACTGGATCAAACCATCATGCGGAAGCGG
 GTGGACATCCAGGAGGCTCTGAAGAGGCCCATGAAGCAAAGCGGAAGCTGCGACTCTATATCTCCAACA
 CTTTTAACCTGCGAAGCCTGATGCTGAGGATCCGACGCGAGCATTGCCTCCTGGGAGCTACGGGTGGA
 GGGGAAGTCTTGATGATCCCAGCAAACAGAAGCGGAAGTTCTTTCTTTCTTCAAGAGTTTGGTCATC
 GAGCTGGACAAAGATCTTTATGGCCCTGACAACCACTCGTTGAGTGGCATCGGACACCCAGACCCAGG
 AGACGGACGGCTTCCAGGTGAAACGGCCTGGGGACCTGAGTGTGCGCTGCACGCTGCTCCTCATGCTGGA
 CTACCAGCCTCCCAGTTCAAATGGATCCCCGCCTAGCCCGGCTGCTGGGGCTGCACACACAGAGCCGC
 TCAGCCATTGTCCAGGCCCTGTGGCAGTATGTGAAGACCAACAGGCTGCAGGACTCCCATGACAAGGAAT
 ACATCAATGGGGACAAGTATTTCCAGCAGATTTTTGATTGTCCCCGGCTGAAGTTTTCTGAGATCCCCA
 GCGCCTCACAGCCTGCTATTGCCCCCTGACCAATTGTCATCAACCATGTCATCAGCGTGGACCCCTTCA
 GACCAGAAGAAGACGGCGTGTATGACATTGACGTGGAGTGGAGGAGCCATTAAGGGGCGAGATGAGCA
 GTTCTCCTATCCACGGCAACCAGCAGGAGATCAGTGTCTGGACAGTAAGATCCATGACAGCATTGCA
 GTCCATAAACAGCTCAAGATCCAGAGGACTTCAAGCTTCTCCAGAGACCCCAAAGGCTATGTC
 CAAGACCTGCTCCGCTCCAGAGCCGGACCTCAAGGTGATGACAGATGTAGCCGCAACCTGAAGAGG
 AGCGCCGGGTGAGTTCTACCACAGCCCTGGTCCCAGGAGGCCGTCAGTCGCTACTTCTACTGCAAGAT
 CCAGCAGCGCAGGAGGAGCTGGAGCAGTCGCTGGTTGTGCGCAACACC

ACGCGTACGCGGCCGCTCGAGCAGAACTCATCTCAGAAGAGGATCTGGCAGCAATGATATCTGGATT
 ACAAGGATGACGACGATAAGGTTTAA

Protein Sequence:

>RC222004 representing NM_001003801
 Red=Cloning site Green=Tags(s)

MAADEVAGGARKATKSKLFEFLVHGVPRGMPGARMPHQGAPMPPGSPYMGSPAVRPLAPAGMEPARK
 RAAPPPGQSQAQSQGPVPTAPARSRSARRRKMADKILPQRIRELVPESEQAYMDLLAFERKLDQTIMRKR
 VDIQEALKRPMKQKRKLRLYISNTFNPAPDAEDSDGSIASWELRVEGKLLDDPSKQKRKFSFFKSLVI
 ELDKDLYGPDNHLVEWHRTPTTQETDGFQVCRPGDLVSRCTLLMLDYQPPQFKLDPRLARLLGLHTQSR
 SAIVQALWQYVKTNRQLQSDHKEYINGDKYFQQIFDCPRLKFSEIPQRLTALLPPDPIVINHVISVDPS
 DQKKTACYDIDVEVEEPLKGMSSFLLSTANQQEISALDSKIHETIESINQLKIQRDFMLSFSRDPKGYV
 QDLLRSQSRDLKVMTDVAGNPEEERRAEFYHQPWSQEAVSRYFYCKIQRRQLEQLSVVRNT

TRTRPLEQKLISEEDLAANDILDYKDDDDKV

Chromatograms:

https://cdn.origene.com/chromatograms/mk8062_h05.zip

Restriction Sites:

Sgfl-Mlul

Cloning Scheme:

Cloning sites used for ORF Shutting:



* The last codon before the Stop codon of the ORF

ACCN: NM_001003801

ORF Size: 1449 bp

OTI Disclaimer: The molecular sequence of this clone aligns with the gene accession number as a point of reference only. However, individual transcript sequences of the same gene can differ through naturally occurring variations (e.g. polymorphisms), each with its own valid existence. This clone is substantially in agreement with the reference, but a complete review of all prevailing variants is recommended prior to use. [More info](#)

OTI Annotation: This clone was engineered to express the complete ORF with an expression tag. Expression varies depending on the nature of the gene.

Components: The ORF clone is ion-exchange column purified and shipped in a 2D barcoded Matrix tube containing 10ug of transfection-ready, dried plasmid DNA (reconstitute with 100 ul of water).

Reconstitution Method:

1. Centrifuge at 5,000xg for 5min.
2. Carefully open the tube and add 100ul of sterile water to dissolve the DNA.
3. Close the tube and incubate for 10 minutes at room temperature.
4. Briefly vortex the tube and then do a quick spin (less than 5000xg) to concentrate the liquid at the bottom.
5. Store the suspended plasmid at -20°C. The DNA is stable for at least one year from date of shipping when stored at -20°C.

RefSeq: [NM_001003801.2](#)
RefSeq Size: 1700 bp

RefSeq ORF: 1452 bp

Locus ID: 6604

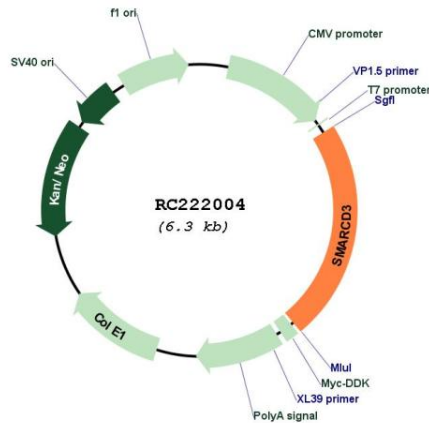
UniProt ID: [Q6STE5](#)
Cytogenetics: 7q36.1

Protein Families: Druggable Genome, Transcription Factors

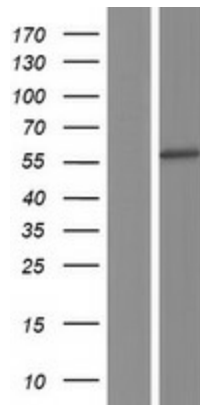
MW: 54.8 kDa

Gene Summary: The protein encoded by this gene is a member of the SWI/SNF family of proteins, whose members display helicase and ATPase activities and which are thought to regulate transcription of certain genes by altering the chromatin structure around those genes. The encoded protein is part of the large ATP-dependent chromatin remodeling complex SNF/SWI and has sequence similarity to the yeast Swp73 protein. Multiple alternatively spliced transcript variants have been found for this gene, but the biological validity of some variants has not been determined. [provided by RefSeq, Jul 2008]

Product images:



Circular map for RC222004



Western blot validation of overexpression lysate (Cat# [LY424014]) using anti-DDK antibody (Cat# [TA50011-100]). Left: Cell lysates from untransfected HEK293T cells; Right: Cell lysates from HEK293T cells transfected with RC222004 using transfection reagent MegaTran 2.0 (Cat# [TT210002]).