

## Product datasheet for **RC222003**

### TTC39C (NM\_153211) Human Tagged ORF Clone

#### Product data:

|                           |   |
|---------------------------|---|
| Product Type:             | Expression Plasmids                       |
| Product Name:             | TTC39C (NM_153211) Human Tagged ORF Clone |
| Tag:                      | Myc-DDK                                   |
| Symbol:                   | TTC39C                                    |
| Synonyms:                 | C18orf17; HsT2697                         |
| Mammalian Cell Selection: | Neomycin                                  |
| Vector:                   | pCMV6-Entry (PS100001)                    |
| E. coli Selection:        | Kanamycin (25 ug/mL)                      |



[View online »](#)

**ORF Nucleotide Sequence:**

>RC222003 ORF sequence  
 Red=Cloning site Blue=ORF Green=Tags(s)

TTTTGTAATACGACTCACTATAGGGCGGCCGGGAATTCGTCGACTGGATCCGGTACCGAGGAGATCTGCC  
 GCC**CGGATCGCC**

ATGAGTTTTGGAGCCAGCTTTGTGAGTTTTTTGAATGCCATGATGACATTTGAGGAAGAAAAATGCAGT  
 TGGCATGTGATGACTTAAAAACACAGAAAACTGTGTGAAAGTGAAGAGGCTGGAGTAATTGAAACAAT  
 CAAGAATAAAATTAAGAAGAACGTTGATGTCCGAAAAATCCGCCCCCTCTATGGTTGATCGGCTTCAGAGG  
 CAGATAATCATAGCTGACTGCCAGGTTTACCTGGCTGTGCTTTTCAATTTGAAAACAAGAATTGTCAGCTT  
 ATATCAAAGGTGGGTGGATCCTTAGGAAAGCCTGGAAGATTTACAATAAATGCTATCTGGACATCAATGC  
 CCTTCAGGAGCTGTATCAGAAGAAGCTAACTGAAGAGTCTTGACTTCTGATGCTGCAAATGATAATCAC  
 ATTGTGGCTGAAGGGGTGTCTGAGGAGTCTCTGAACAGACTGAAAGGTGCTGTTAGCTTTGGATATGGCC  
 TTTTTACCTTTGCATATCCATGGTCCCCCAACCTGCTCAAAATCATCAACCTGCTGGGTTTTCTGG  
 AGACCCCTACAGGGGCTTTCTTACTGATGTATGCAAGCGAAAGTAAGGACATGAAGGCCCTTTAGCT  
 ACATTAGCTCTGCTCTGGTATCATACTGTAGTCCGCCCTTTTTGCCTTGGATGGCAGTGATAACAAGG  
 CAGGCCTGGATGAAGCTAAGGAAATTCCTTAAAAAAGAAGCTGCTTATCCAAATTCCTCCCTCTTAT  
 GTTTTTCAAGGGACGGATACAACGACTAGAGTGTCAAATCAACAGTGCCTTGACATCTTCCACACTGCT  
 TTGGAACCTGCAGTAGACCAGAGAGAAATCAACATGTCTGTCTGTATGAAATTGGTTGGTGCAGCATGA  
 TAGAGCTCAATTTCAAGGATGCATTTGATTCTTTGAGAGGCTAAAAATGAGTCCAGGTGGTCCCAGTG  
 CTATTATGCCTACTTGACTGCAGTTTGTGAGGGAGCCACTGGTGTGTTGGATGGGCACAGATTGCTTT  
 AAAGAAGTTCAGAACTCTTCAAAGGAAAAACAATCAGATTGAACAGTTCTCGTGAAAAAGGCAGAGC  
 GATTTCCGGAAGCAAACCCCAACCAAGCGCTCTGTGTGGCTCTATTGAAGTGTGACTTTGTGGAA  
 AGCTCTTCCAAACTGTTCTTCCCAACCTGCAGAGGATGAGTCAAGCTTGCCATGAAGTGGATGACTCA  
 TCTGTTGTTGGATTAAAGTATTTGCTTCTTGGTCCATACACAAATGTCTAGGAACTCAGAAGATGCTG  
 TTCAGTACTTCCAGCGAGCTGTTAAAGATGAATTGTGTCGTCAGAATAATTTATATGTTACGCCGTATGC  
 CTGTTATGAACTTGGCTGTCTTCTATTAGACAAACCAGAGACTGTAGGAAGAGGCAGAGCTTACTTCTT  
 CAAGCAAAGGAGGATTTCTCTGGCTACGACTTTGAAAACAGATTGCATGTCCGCATCCATGCTGCTCG  
 CCTCTCTGAGGGAATTGGTTCTCAG

**ACGCGT**ACGCGGCCGCTCGAGCAGAACTCATCTCAGAAGAGGATCTGGCAGCAAATGATATCCTGGATT  
 ACAAGGATGACGACGATAAGGTTTAA

**Protein Sequence:**

>RC222003 protein sequence  
 Red=Cloning site Green=Tags(s)

MSFGASFVSNAMMTFEEEEKMLACDDLKTEKLCESSEAGVIETIKNKIKKNVDVRKSAPSMVDRLQR  
 QIIADQCQVYLAVLSFVKQELSAYIKGGWILRKAWKIYNKCYLDINALQELYQKKLTEESLTSDAANDNH  
 IVAEGVSEESLNRLKGVSVFYGLFHLCSMVPPNLLKIINLLGFPDRLQGLSSLMYASESKDMKAPLA  
 TLALLWYHTVVRPFALDGSNDKAGLDEAKEILLKKEAAYPNSSLFMMFKGRIQRLECIINSALTSFHTA  
 LELAVDQREIQHVCLYEIGWCSMIELNFKDAFDSFERLKNESRWSQCYAYLTAVCQGATGDVDGAQIVF  
 KEVQKLFKRKNNQIEQFSVKAERFRKQTPKALCVLASIEVLYLWKALPNCSFPNLQRMSQACHEVDDS  
 SVVGLKYLKLLGAIHKCLGNSEDAVQYFQRAVKDELCRQNNLYVQPYACYELGCLLLDKPETVGRGRALLL  
 QAKEDFSGYDFENRLHVR IHAALASLRELVPQ

**TRTRPLEQKLI**SEEDLAANDILDYKDDDDKV

**Chromatograms:**

[https://cdn.origene.com/chromatograms/mk6730\\_e05.zip](https://cdn.origene.com/chromatograms/mk6730_e05.zip)

**Restriction Sites:**

Sgfl-MluI

**Cloning Scheme:**

**ACCN:** NM\_153211

**ORF Size:** 1566 bp

**OTI Disclaimer:** The molecular sequence of this clone aligns with the gene accession number as a point of reference only. However, individual transcript sequences of the same gene can differ through naturally occurring variations (e.g. polymorphisms), each with its own valid existence. This clone is substantially in agreement with the reference, but a complete review of all prevailing variants is recommended prior to use. [More info](#)

**OTI Annotation:** This clone was engineered to express the complete ORF with an expression tag. Expression varies depending on the nature of the gene.

**Components:** The ORF clone is ion-exchange column purified and shipped in a 2D barcoded Matrix tube containing 10ug of transfection-ready, dried plasmid DNA (reconstitute with 100 ul of water).

- Reconstitution Method:**
1. Centrifuge at 5,000xg for 5min.
  2. Carefully open the tube and add 100ul of sterile water to dissolve the DNA.
  3. Close the tube and incubate for 10 minutes at room temperature.
  4. Briefly vortex the tube and then do a quick spin (less than 5000xg) to concentrate the liquid at the bottom.
  5. Store the suspended plasmid at -20°C. The DNA is stable for at least one year from date of shipping when stored at -20°C.

**RefSeq:** [NM\\_153211.3](#), [NP\\_694943.2](#)
**RefSeq Size:** 4900 bp

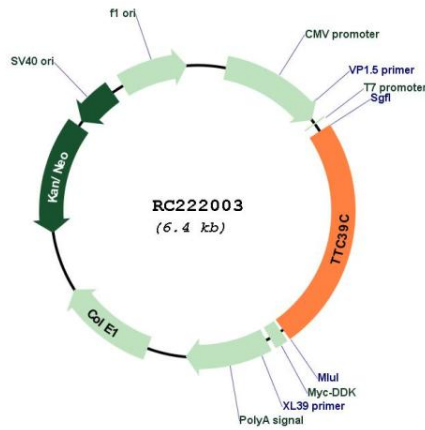
**RefSeq ORF:** 1569 bp

**Locus ID:** 125488

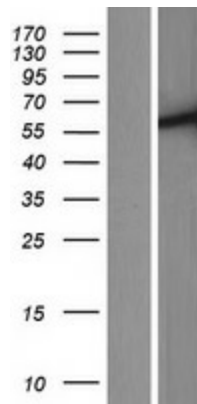
**UniProt ID:** [Q8N584](#)
**Cytogenetics:** 18q11.2

MW: 59.2 kDa

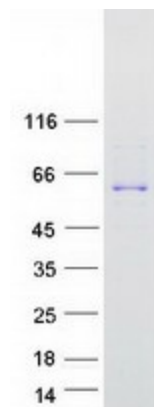
Product images:



Circular map for RC222003



Western blot validation of overexpression lysate (Cat# [LY407140]) using anti-DDK antibody (Cat# [TA50011-100]). Left: Cell lysates from untransfected HEK293T cells; Right: Cell lysates from HEK293T cells transfected with RC222003 using transfection reagent MegaTran 2.0 (Cat# [TT210002]).



Coomassie blue staining of purified TTC39C protein (Cat# [TP322003]). The protein was produced from HEK293T cells transfected with TTC39C cDNA clone (Cat# RC222003) using MegaTran 2.0 (Cat# [TT210002]).