

Product datasheet for **RC221993**

GTF2IRD2B (NM_001003795) Human Tagged ORF Clone

Product data:

Product Type:	Expression Plasmids
Product Name:	GTF2IRD2B (NM_001003795) Human Tagged ORF Clone
Tag:	Myc-DDK
Symbol:	GTF2IRD2B
Synonyms:	GTF2IRD2; GTF2IRD2A
Mammalian Cell Selection:	Neomycin
Vector:	pCMV6-Entry (PS100001)
E. coli Selection:	Kanamycin (25 ug/mL)



[View online »](#)

ORF Nucleotide Sequence:

>RC221993 representing NM_001003795
 Red=Cloning site Blue=ORF Green=Tags(s)

TTTTGTAATACGACTCACTATAGGGCGGCCGGGAATTCGTCGACTGGATCCGGTACCGAGGAGATCTGCC
 GCC**CGGATCGCC**

ATGGCCCAGGTAGCAGTGTCCACCTGCCTGTTGAAGAAGAGTCTCCTCAGAGACCAGGATGGTGGTGA
 CATTCTCGTGTCTGCCCTCGAATCCATGTGTAAGAAGTGGCCAAGTCCAAGGCAGAAGTGGCCTGCAT
 CGCAGTGTACGAAACAGACGTGTTTGTCTCGGAACCGAGAGAGGATGCGCTTTTGTAAATGCCAGGACG
 GATTTTCAGAAAGATTTTCAAAAATACTGCGTTGCAGAGGGACTGTGTGAGGTGAAACCTCCCTGCCCTG
 TGAACGGGATGCAGGTCCACTCGGGCGAAACGAAATACTCAGGAAGGCAGTGGAGGACTATTTCTGCTT
 TTGTTATGGTAAAGCCTTAGGGACAACAGTGTGGTGCCTGTTCCCTATGAGAAGATGCTGCGAGACCAG
 TCGGCTGTGGTAGTGCAGGGCTTCCGGAAGGCGTTGCCTTCAACACCTGAGAATTACGACCTTGCAA
 CCCTGAAATGGATTTTGGAGAACAAGCAGGGATTTTCATTCATATAAATAGACCCTTCTAGGACCAGA
 GAGTCAGCTGGGTGGCCCTGGGATGGTAAACAGATCGCGAGAGATCCATAGTATCACCAAGTAAAAGCTGC
 GGCCCATCAATGTGAAAACGAACTGAACCCATGGAAGATTCTGGCATTCACTGAAAAGCAGAAGCTGTCTCAG
 TCAAGAAAGAATCAGAAGATCCTAATTACTATCAATATAATATGCAAGGAAGCCACCTTCTTCCACAAG
 CAATGAAGTAATAGAAATGGAATTACCAATGGAAGATCCACTCCGCTGGTCCCTTCAGAAGAACCAAAAT
 GAGGACCTGAAGCCGAGGTGAAAATCGAAGGAAACACAAATTCATCCAGTGTACAAAATTCGACGACG
 GTGTTGAAGATCTTAACATCGTTCAAGTACTGTTCCAGATAATGAGAAGGAAAGATTATCAAGCATTGA
 AAAGATTAACAGCTAAGAGAACAAGTTAATGACCTCTTAGCCGAAAATTTGGTGAAGCAATTGGCGTG
 GATTTCCCTGTGAAAGTCCCTACAGGAAGATCACATTCACCCCTGGCTGTGTGGTATTGATGGCATGC
 CCCCAGGGTGGTATTCAAGGCCCGGCTATCTGGAAATCAGTCCATGAGGAGGATCTTGGAGGACGAG
 TGAGTTTATCAAATTCACAGTCATCAGGCGCTTCCAGGGCTTGAGCTCAGTAATGTGGGAAAACGCAAG
 ATAGACCAGGAGGCGGTGTGTTTCAAGAAAAGTGGGAGAGAGCGTATTTCTCGTGAAGTACAGAATA
 TTCCAACATGTCTCATATGCAAAACAAAGCATGTCTGTGTCCAAAGAATATAACCTAAGACGCCACTATCA
 AACCAATCACAGCAAGCATTATGACCAGTATACGGAAAGAATGCGTGACGAGAAGCTTACGAGCTGAAA
 AAAGGGCTCAGGAAGTATCTCTTAGGCTCGTACAGACCCGAGTGTCCGAGCAAAAACAAGTGTGTTGCAA
 ACCCAAGTCAACCCAGAAAATCCCCGTCAGCCTGTAGAGGACCTAGCTGGGAAGTATGGGAGAAGT
 ACGTGAAGAAAATCAGGTCTTTGTGGCATATTCTATCGCAATCGATGAGATCACGGATATAAATAATACC
 ACCCAGTTGGCCATATTCATCCGTGGTGTGATGAGAATTCGATGTGTCCGAAGAACTTCTGGACACGG
 TGCCCATGACGGGTACAAAATCTGGCAACGAGATCTTTTGTGCTGTTGAGAAGAGCCTGAAAAGTCTG
 TATCAACTGGTTCGAGATTAGTAAGCGTGGCCTCCACTGGCACCCAGCGATGGTGGATGCCAATAACGGG
 CTTGTACAAAACGAAAGTCCAGGGTGGCGACGTTCTGCAAGGGTGGGAACTGAAGTCCATCTGTTGTA
 TAATTCATCCGGAATCACTCTGTGCTCAGAAGTTGAAGATGGACCACGTCATGGACGTGGTGTGAAAGTC
 CGTGAAGTGGATATGCTCCCGGGACTGAACCACAGCGAGTTCACAACCTTGCTCTATGAGCTGGACAGC
 CAGTATGGTAGCCTCCTGTAACACGGAGATTAAGTGGCTCAGTCGCGGGCTCGTGCTAAAGAGATTTT
 TCGAATCCTTGAAGAAAATCGACTCCTTCATGTATCCAGAGGAAACCCCTGCCTCAACTGAGCTCCAT
 AGATTGGATCCGAGACCTGGCCTTCTTGGTTGACATGACGATGCATCTGAACGCTTTGAACATCTCTC
 CAAGGACACTCCCAAATCGTCACGAGATGTATGACCTGATCCGGGCTTCCAGCAAAACTGTGCCTCT
 GGGAGACTCATTTGACGAGGAATAATCTGGCCACTTTCCACCCTGAAATTTGGTTTCCAGAAAATGAAAG
 CGATGGCCTGAAGTACATTCCAAAATCGCGGAACTCAAGACCGAATTCAGAAAAGGCTGTCTGATTTT
 AAATCTACGAAAGCGAACTGACTCTGTTCAGCTCCCCGTTCTCCACGAAGATCGACAGTGTGCACGAGG
 AGCTCCAGATGGAGGTTATCGACCTGCAATGCAACACGGTCTGAAGACGAAATACGACAAGGTGGGAAT
 ACCAGAATTCTACAAGTACCTCTGGGTAGCTACCCGAAATACAAGCACCATTGCGCAAAGATTCTTTCC
 ATGTTCCGGGAGCACCTACATCTGCGAACAGCTGTTCTCCATTATGAAACTGAGCAAAAACAAAATACTGCT
 CCCAGTTAAAGGATCCAGTGGGATTCTGTACTCCACATCGCAACG

ACGCGTACGCGGCCGCTCGAGCAGAAACTCATCTCAGAAGAGGATCTGGCAGCAAATGATATCCTGGATT
 ACAAGGATGACGACGATAAGGTTTAA

Protein Sequence: >RC221993 representing NM_001003795
 Red=Cloning site Green=Tags(s)

```

MAQVAVSTLPVEEESSETRMVVTFVLSALESMCKELAKSKAEVACIAVYETDVFVVGTERGCFAVNART
DFQKDFAKYCVAEGLCEVKPPCVNGMQVHSGETEILRKAVEDYFCFCYKALGTTVMVPVPYEKMLRDQ
SAVVVQGLPEGVAFQHPENYDLATLKWILENKAGISFIIINRPFLGPESQLGGPGMVTDAERSIVSPSEC
GPINVKTEPMEDSGISLKA EAVSVKKESEDPNYYQYNMQGSHPSSTSNEVIEMELPMEDSTPLVPSEEPN
EDPEAEVKIEGNTNSSSVTNSAAGVEDLNIVQVTPDNEKERLSSIEKIKQLREQVNDLFSRKFGAIGV
DFPVKVPYRKITFNPGCVVVDGMPPGVVFKAPGYLEISSMRRILEAAEFIKFTVIRPLPGLLEL SNVGRK
IDQEGRVFQEKWERAYFFVEVQNIPTCLICKQSMSVSKEYNLRRHYQTNHSHYDQYTERMRDEKLHELK
KGLRKYLLGSSDTECPKQVAFANPSTQKSPVQPVEDLAGNLWEKLREKIRSFVAYSIAIDEITDINNT
TQLAIFIRGVDENFDVSEELLDTPMTGKSGNEIFLRVEKSLKKFCINWSRLVSVASTGTPAMVDANNG
LVTKLKS RVATFCKGAELKSICCIHPESLCAQKLKMDHVM DVVKS VNWI CSRGLNHSEFTLL YELDS
QYGSLLYYTEIKWLSRGLVLRFFESLEEIDSFMSRSGKPLPQLSSIDWIRDLAFLVDMT MHLNALNISL
QGHSQIVTQMYDLIRAF LAKLCLWETHL TRNNLAHFPTLKL VSRNESDGLNYIPKIAELKTEFQKRLSDF
KLYESELTLFSSPFSTKIDS VHEELQMEVIDLQCNTVLKTKYDKVGIPEFYKYLWGSYPKYKHKAKILS
MFGSTYICEQLFSIMKLSKTKYCSQLKDSQWDSVLHIAT
  
```

TRTRPLEQKLISEEDLAANDILDYKDDDDKV

Chromatograms: https://cdn.origene.com/chromatograms/mk8039_e07.zip

Restriction Sites: SgfI-MluI

Cloning Scheme:

Cloning sites used for ORF Shuttling:



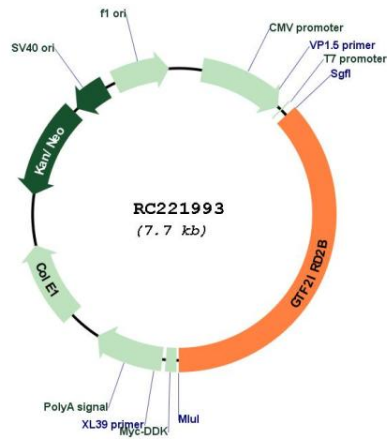
* The last codon before the Stop codon of the ORF

ACCN: NM_001003795

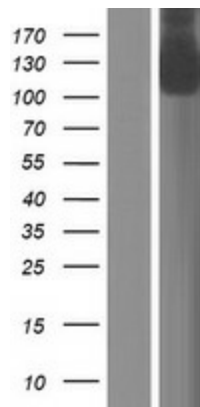
ORF Size: 2847 bp

OTI Disclaimer:	The molecular sequence of this clone aligns with the gene accession number as a point of reference only. However, individual transcript sequences of the same gene can differ through naturally occurring variations (e.g. polymorphisms), each with its own valid existence. This clone is substantially in agreement with the reference, but a complete review of all prevailing variants is recommended prior to use. More info
OTI Annotation:	This clone was engineered to express the complete ORF with an expression tag. Expression varies depending on the nature of the gene.
Components:	The ORF clone is ion-exchange column purified and shipped in a 2D barcoded Matrix tube containing 10ug of transfection-ready, dried plasmid DNA (reconstitute with 100 ul of water).
Reconstitution Method:	<ol style="list-style-type: none">1. Centrifuge at 5,000xg for 5min.2. Carefully open the tube and add 100ul of sterile water to dissolve the DNA.3. Close the tube and incubate for 10 minutes at room temperature.4. Briefly vortex the tube and then do a quick spin (less than 5000xg) to concentrate the liquid at the bottom.5. Store the suspended plasmid at -20°C. The DNA is stable for at least one year from date of shipping when stored at -20°C.
RefSeq:	NM_001003795.3
RefSeq Size:	3559 bp
RefSeq ORF:	2850 bp
Locus ID:	389524
UniProt ID:	Q6EKJ0
Cytogenetics:	7q11.23
MW:	107.1 kDa
Gene Summary:	This gene encodes a glycosylated phosphoprotein with a leucine zipper motif, two helix-loop-helix motifs (1 repeats) that are similar to domains found in the TFII-I family of transcription factors, one CHARLIE8 transposable element-like sequence, and a BED zinc finger. This gene lies within a region that is deleted in Williams-Beuren syndrome. Alternatively spliced variants which encode different protein isoforms have been described; however, not all variants have been fully characterized. [provided by RefSeq, Jul 2008]

Product images:



Circular map for RC221993



Western blot validation of overexpression lysate (Cat# [LY424010]) using anti-DDK antibody (Cat# [TA50011-100]). Left: Cell lysates from untransfected HEK293T cells; Right: Cell lysates from HEK293T cells transfected with RC221993 using transfection reagent MegaTran 2.0 (Cat# [TT210002]).