

Product datasheet for **RC221989**

GPR107 (NM_020960) Human Tagged ORF Clone

Product data:

Product Type:	Expression Plasmids
Product Name:	GPR107 (NM_020960) Human Tagged ORF Clone
Tag:	Myc-DDK
Symbol:	GPR107
Synonyms:	bA138E2.2; GCDRP; LUSTR1
Mammalian Cell Selection:	Neomycin
Vector:	pCMV6-Entry (PS100001)
E. coli Selection:	Kanamycin (25 ug/mL)



[View online »](#)

ORF Nucleotide Sequence:

>RC221989 representing NM_020960
 Red=Cloning site Blue=ORF Green=Tags(s)

TTTTGTAATACGACTCACTATAGGGCGGCCGGAATTCGTCGACTGGATCCGGTACCGAGGAGATCTGCC
 GCC**CGCATCGCC**

ATGGCCGCTCTGGCGCCCGTCGGCTCCCCGCCTCCCGCGTCTAGGCTGGCCGGCCCTCCGGCTGC
 TCCAATGCTGGGTTTGTCTGCAGTTGCTGGCCGAGCCTGGCCTGGCCCGGTCCATCACCTGGCACTCAA
 GGATGATGTGAGGCATAAAGTTCATCTGAACACCTTTGGCTTCTTCAAGGATGGGTACATGGTGGTGAAT
 GTCAGTAGCCTCTCACTGAATGAGCCTGAAGACAAGGATGTGACTATTGGATTTAGCCTAGACCGTACAA
 AGAATGATGGCTTTTCTTCTTACCTGGATGAAGATGTGAATTACTGTATTTAAAGAAACAGTCTGTCTC
 TGTACCCTTTTAAATCCTAGACATCTCCAGAAGTGAAGTAAGAGTAAAGTCTCCACCAGAAGCTGGTACC
 CAGTTACCAAAGATCATCTTCAGCAGGGATGAGAAAGTCTTGGTCCAGAGCCAGGAGCCTAATGTTAAC
 CTGCTTCAGCAGGCAACCAGACCCAGAAGACACAAGATGGTGGAAAGTCTAAAAGAAGTACAGTGGATTC
 AAAGGCCATGGGAGAGAAATCCTTTCTGTTTATAATAATGGTGGGCAGTGTCAATTCAGTTTTCTTT
 AACATCAGCACTGATGACCAAGAAGGCCTTTACAGTCTTTATTTTCATAAATGCCTTGGAAAAGAATTGC
 CAAGTGACAAGTTTACATTCAGCCTTGATATTGAGATCACAGAGAAGAATCCTGACAGCTACCTCTCAGC
 AGGAGAAATTCCTCTCCCAAATATACATCTCAATGGCCTTTTCTTCTTTCTTCTGGGACCATCTGG
 ATTCATATCCTTCGAAAACGACGGAAATGATGTATTTAAATCCACTGGCTGATGGCGGCCCTTCCTTTCA
 CCAAGTCTCTTCTTGGTGTCCATGCAATTGACTACCACTACATCTCCTCCAGGGCTTCCTATCGA
 AGGCTGGGCTGTGTGTACTACATAACTCACCTTTTGAAGGGGGCCTACTCTTCATCACCATTGCACCT
 ATTGGCACTGGCTGGGCTTTTATTAAGCACATCCTTTCTGATAAAGACAAAAAGATCTTCATGATTGTCA
 TTCCACTCCAGGCTCCGCAATGTAGCCTACATCATAGAGTCCACCGAGGAGGGCAGCAGTAATA
 TGGCTTGTGGAAGGACTCTCTATTTCTGGTCGACCTGTTGTGTTGTGGTGCATCCTCTTCCCAGTGGTG
 TGGTCAATCAGACATTTACAAGAAGCATCAGCAACAGATGGAAAAGCTGCTATTAACCTAGCAAAGCTGA
 AACTTTTCAGACATTATTACGTCTTGATTGTGTGTACATATACTTCACTAGGATCATTGCATTTCTCCT
 CAAACTCGCTGTTCCATTCCAGTGGAAAGTGGCTCTACCAGCTCCTGGATGAAACGGCCACTGGTCTTC
 TTTGTTCTAACGGGGTATAAATTCGGTCCGGCTTCCAGATAACCCCTACCTACAATTTCTCAGGAAGAAG
 AAGACTTGAAAATGGAGTCCGTTGTGACAACATCTGGGGTATGAAAGTATGAAGAAAGTCAAGAAGGT
 GACCAACGGCTCCGTGGAGCCCCAGGGCAGTGGGAAGGCCCGTG

ACGCGTACGCGGCCGCTCGAGCAGAAACTCATCTCAGAAGAGGATCTGGCAGCAAATGATATCCTGGATT
 ACAAGGATGACGACGATAAGGTTTAA

Protein Sequence:

>RC221989 representing NM_020960
 Red=Cloning site Green=Tags(s)

MAALAPVGPASRGPRLAAGLRLLPMLGLLQLLAEPGLGRVHHLALKDDVRHKVHLNTFGFFKDGMYMVN
 VSSLNLNEPEDKDVTIGFSLDRTKNDGFSSYLDEDVNYCILKKQSVSVTLILLIDISRSEVRVKSPPEAGT
 QLPKIIIFSRDEKVLGQSQEPNVNPASAGNQTKTQDGGKSKRSTVDSKAMGEKFSVHNNGGAVSFQFFF
 NISTDDQEGLYSLYFHKCLGKELPSDKFTFSLDIEITEKNPDSYLSAGEIPLPKLYISMAFFFFLSGTIWI
 IHILRKRNRDVFKIHWMALPFTKSLSLVFHAIDYHYISSQGFPIEGWAVVYIITHLLKGALLFITIAL
 IGTGWAFIKHILSDKDKKIFMIVIPLQVLANVAYIIIESTEETGTEYGLWKDSLFLVDLLCCGAILFPVW
 WSIRHLQEASATDGKAAINLAKLKLFRHYVYLIVCYIYFTRIIAFLKLAVPFQWKWLYQLLDETATLVF
 FVLTYGKFRPASDNPYLQLSQEEEDLEMESVVTTSVGMESMKKVKVKTNGSVPEPQGEWEGAV

TRTRPLEQKLISEEDLAANDILDYKDDDDKV

Chromatograms:

https://cdn.origene.com/chromatograms/mg4036_c05.zip

Restriction Sites:

Sgfl-MluI

Cloning Scheme:


ACCN: NM_020960

ORF Size: 1656 bp

OTI Disclaimer: The molecular sequence of this clone aligns with the gene accession number as a point of reference only. However, individual transcript sequences of the same gene can differ through naturally occurring variations (e.g. polymorphisms), each with its own valid existence. This clone is substantially in agreement with the reference, but a complete review of all prevailing variants is recommended prior to use. [More info](#)

OTI Annotation: This clone was engineered to express the complete ORF with an expression tag. Expression varies depending on the nature of the gene.

Components: The ORF clone is ion-exchange column purified and shipped in a 2D barcoded Matrix tube containing 10ug of transfection-ready, dried plasmid DNA (reconstitute with 100 ul of water).

Reconstitution Method:

1. Centrifuge at 5,000xg for 5min.
2. Carefully open the tube and add 100ul of sterile water to dissolve the DNA.
3. Close the tube and incubate for 10 minutes at room temperature.
4. Briefly vortex the tube and then do a quick spin (less than 5000xg) to concentrate the liquid at the bottom.
5. Store the suspended plasmid at -20°C. The DNA is stable for at least one year from date of shipping when stored at -20°C.

RefSeq: [NM_020960.5](#)

RefSeq Size: 2686 bp

RefSeq ORF: 1659 bp

Locus ID: 57720

UniProt ID: [Q5VW38](#)

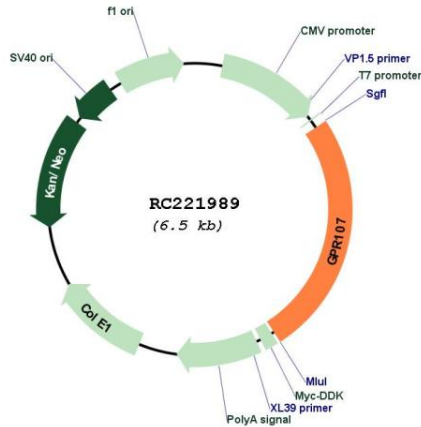
Cytogenetics: 9q34.11

Protein Families: Druggable Genome, Transmembrane

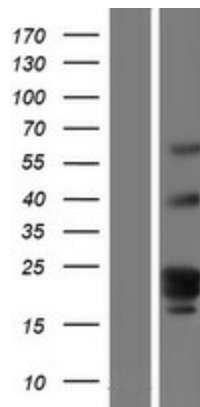
MW: 61.8 kDa

Gene Summary: Has been proposed to act as a receptor for neuronostatin, a peptide derived from the somatostatin/SST precursor (PubMed:22933024). Involved in blood sugar regulation through the induction of glucagon in response to low glucose (By similarity).[UniProtKB/Swiss-Prot Function]

Product images:



Circular map for RC221989



Western blot validation of overexpression lysate (Cat# [LY412183]) using anti-DDK antibody (Cat# [TA50011-100]). Left: Cell lysates from untransfected HEK293T cells; Right: Cell lysates from HEK293T cells transfected with RC221989 using transfection reagent MegaTran 2.0 (Cat# [TT210002]).