

Product datasheet for RC221984

IL17REL (NM_001001694) Human Tagged ORF Clone

Product data:

Product Type:	Expression Plasmids
Product Name:	IL17REL (NM_001001694) Human Tagged ORF Clone
Tag:	Myc-DDK
Symbol:	IL17REL
Mammalian Cell Selection:	Neomycin
Vector:	pCMV6-Entry (PS100001)
E. coli Selection:	Kanamycin (25 ug/mL)
ORF Nucleotide Sequence:	>RC221984 representing NM_001001694 Red=Cloning site Blue=ORF Green=Tags(s)

TTTTGTAATACGACTCACTATAGGGCGGCCGGAATTCGTCGACTGGATCCGGTACCGAGGAGATCTGCCGCCCGATCGCC

ATGTCCAGGTCAGTCCTGGAGGCCCTGACGTCCTCCACTGCCATGCAGTGTGCCCTCTGACGGCTGCCGATGCTCCTGCGTGTACGCGCCTCCATCACCTGCATGAGCGCCTGCGGGCCTGGAGGCTGTGCCATGAGCCTGGACACCCAGGAGACGCAGTGTGAGAGCGTGTGGGTGGCCAGGGCCTCCACCGGCAGCAGGGGGGCAGCAGCTCCAAGTGCACCTTTGGCTGCTTTGCGGTGAGCGTGGCCAGCACCTCTATGTCACCCTGAGACCATCCCTCATTTCTGCGGGTCCAGCTGGACCAGAGGCACCTCGTGAAGCGGGGAAGCTCAGCTACTGGGTGGACCGGAGGCGCAAGGCGATTCTGGTGCAAGTGCCAGGGCCTCCGGGAGCCCCGACTACTACTGCGGCTCTGCCTCAAGCGTTACCTGCGAGGACGCCGGCGCCCTGTGCGAGTGACCGCAACAGCGTCTCCAGGCCGTCTTCTGCCCTACAGCCAGGAGCTGCCGTGCCTGTGCCTGGAGGGCTGGTCTGCGACCCCTGACGCGGTGCGGATCCAGATCTGCCCTTTGAAAACGACACTGAGGCACTGGAGGTGCTGTGGGACCGGTCTACTACCACCCGAGAGCCAGACACTGAGCTGGGAGCCCGCCTGCCCTGTGAGTGGCCATGTGAGCCTGTGCTGGCCTCGGGCCGGGGCCGGGGCCGGCTGCCGTAAGCTGCAGCAATCCAGCCAGCTGGTGCATCGCAGAGTGCAGTACCCGCTGGTGGACACCCAGCCCAGCTCTGCCTGAAGTTCTCTACCAGTTGGGGTCTGGGTGCGGTGCCCTTTGAAACAGCGTCGTTCCCAACCCGCCCACTTCCAGGTGCACCTGTGTCACAGAGGAAAGTCACAGCTCCCTGCCTGCCAACGCACACTCCAGGCCAGCCGCTCCCTTCAGCCTCAGGTGACCTGGCAGCCGCCCTGCTTTTGCCTTCC

ACGCGTACGCGGCCGCTCGAGCAGAACTCATCTCAGAAGAGGATCTGGCAGCAAATGATATCCTGGATTACAAGGATGACGACGATAAGGTTTAA



[View online »](#)

Protein Sequence: >RC221984 representing NM_001001694
Red=Cloning site Green=Tags(s)

MSRSVLEALTSSAMQCVPDGCAMLLRVRASITLHERLRGLEACAMSLDTQETQCQCSVWVARASHRQQG
 GQQLQVHFGCFVSVQAHLVYVTLRTIPHFCGVQLDQRHLVEAGKLSYWVDRRRKAILVQVPRASGSPDYY
 LRLCLKRFTCEDAGAPVRVTANSVSQAVFLPYSQELPCLCLEGWSATPDVARIQICPFENDTEALEVLWD
 TVYYHPESQTLSEWEPACPVSGHVSLCWRPGRPAGACRKLQSSQLVHRRVQYPLVDTQPQLCLKFSTSWGS
 WVRCPFEQRRFPTPTSRCTCVTGGSHSLPANAHSRPARSLQPQVTWQPPLLLPS

TRTRPLEQKLISEEDLAANDILDYKDDDDKV

Chromatograms: https://cdn.origene.com/chromatograms/ja1031_e10.zip

Restriction Sites: SgfI-MluI

Cloning Scheme:

Cloning sites used for ORF Shuttling:



* The last codon before the Stop codon of the ORF

ACCN: NM_001001694

ORF Size: 1008 bp

OTI Disclaimer: The molecular sequence of this clone aligns with the gene accession number as a point of reference only. However, individual transcript sequences of the same gene can differ through naturally occurring variations (e.g. polymorphisms), each with its own valid existence. This clone is substantially in agreement with the reference, but a complete review of all prevailing variants is recommended prior to use. [More info](#)

OTI Annotation: This clone was engineered to express the complete ORF with an expression tag. Expression varies depending on the nature of the gene.

Components: The ORF clone is ion-exchange column purified and shipped in a 2D barcoded Matrix tube containing 10ug of transfection-ready, dried plasmid DNA (reconstitute with 100 ul of water).

Reconstitution Method:

1. Centrifuge at 5,000xg for 5min.
2. Carefully open the tube and add 100ul of sterile water to dissolve the DNA.
3. Close the tube and incubate for 10 minutes at room temperature.
4. Briefly vortex the tube and then do a quick spin (less than 5000xg) to concentrate the liquid at the bottom.
5. Store the suspended plasmid at -20°C. The DNA is stable for at least one year from date of shipping when stored at -20°C.

RefSeq: [NM_001001694.3](#)

RefSeq Size: 3633 bp

RefSeq ORF: 1011 bp

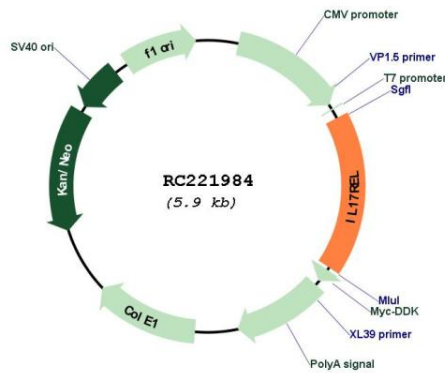
Locus ID: 400935

UniProt ID: [Q6ZVW7](#)

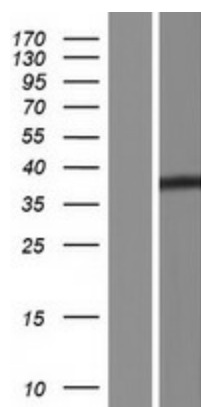
Cytogenetics: 22q13.33

MW: 37.3 kDa

Product images:



Circular map for RC221984



Western blot validation of overexpression lysate (Cat# [LY424210]) using anti-DDK antibody (Cat# [TA50011-100]). Left: Cell lysates from untransfected HEK293T cells; Right: Cell lysates from HEK293T cells transfected with RC221984 using transfection reagent MegaTran 2.0 (Cat# [TT210002]).