

Product datasheet for RC221981

C9orf135 (NM_001010940) Human Tagged ORF Clone

Product data:

Product Type: Expression Plasmids
Product Name: C9orf135 (NM_001010940) Human Tagged ORF Clone
Tag: Myc-DDK
Symbol: C9orf135
Mammalian Cell Selection: Neomycin
Vector: pCMV6-Entry (PS100001)
E. coli Selection: Kanamycin (25 ug/mL)
ORF Nucleotide Sequence: >RC221981 representing NM_001010940
 Red=Cloning site Blue=ORF Green=Tags(s)

TTTTGTAATACGACTCACTATAGGGCGGCCGGAATTCGTCGACTGGATCCGGTACCGAGGAGATCTGCC
 GCC**CGATCGCC**

ATGGATAGCCTTGACAGATCCTGCCAGGACTGGTGCACAGGAAGCAACACTGGTTGGAGATCGGACCAC
 CGGACTTGGTGGAGCGCAAGGGCTCCCTGACCCCTCCGCTCCCATCACAAGAAATACTCGAAGCCGGTGT
 GGTGTATTCCTGGCACCGTGACAGAGAAGCTTTCCCAAAGGTTATGATATAGAGGGTCTGAGAAAAGTT
 AAAAAAGTTGTGAATCAACATATCGGCGACTGGGAACCGATGAATCCCCAATTTGGACATCAGAAAAC
 ATGAAAAGTTGTCACAAATGTGTTTAAACACAGAAATGGGTTGAAATGAAGAGCAAGCTTTATTGAATGA
 GGAACAGTGAGCTCCGGGATTATCGAAAAGGGTCACCGGATTGCCTGCCACAGGTTTTGGAGCTGTCTTT
 CCTAGACATCCACCGGATTGGAGCAAAATGTGTGCATTGACAACGTAAGGATTATGTTCCACCAT
 ATGATTATCAGCCACATGCTTATCCCTGTCAAGATGATTATCCATAGTCCACAGAAAATGCCGTTCTCA
 GTTCACGGATCTAAATGGTTCTAAAAGATTTGGCATCAACACTTGGCATGATGAGAGTGGGATTTATGCT
 AATTCAGATGTA AACAGAACTCTATCCCTTGACTAGTGGGCCATTGTGCCAATT

ACGCGTACGCGGCCGCTCGAGCAGAACTCATCTCAGAAGAGGATCTGGCAGCAATGATATCCTGGATT
 ACAAGGATGACGACGATAAGGTTTAA

Protein Sequence: >RC221981 representing NM_001010940
 Red=Cloning site Green=Tags(s)

MDSLDRSCQDWCDRKQHWLEIGPPDLVERKGSLLRSHHKYKPKVLYSWHRDREAFPKGYDIEGPEKV
 KKLCSNSTRRLGTDESPITWSETHEKLSQMCNTEWVEMKSKALLNEETVSSGIIEVRTGLPATGFGAVF
 PRHPPDWSKMCALTTYSEDYVPPYDYQPHAYPCQDDYSIVHRKCRSQFTDLNGSKRFGINTWHEDESGIYA
 NSDVKQKLYPLTSGPIVPI

TRTRPLEQKLISEEDLAANDILDYKDDDDKV



Chromatograms: https://cdn.origene.com/chromatograms/ja1259_d03.zip

Restriction Sites: SgfI-MluI

Cloning Scheme:



ACCN: NM_001010940

ORF Size: 687 bp

OTI Disclaimer: The molecular sequence of this clone aligns with the gene accession number as a point of reference only. However, individual transcript sequences of the same gene can differ through naturally occurring variations (e.g. polymorphisms), each with its own valid existence. This clone is substantially in agreement with the reference, but a complete review of all prevailing variants is recommended prior to use. [More info](#)

OTI Annotation: This clone was engineered to express the complete ORF with an expression tag. Expression varies depending on the nature of the gene.

Components: The ORF clone is ion-exchange column purified and shipped in a 2D barcoded Matrix tube containing 10ug of transfection-ready, dried plasmid DNA (reconstitute with 100 ul of water).

Reconstitution Method:

1. Centrifuge at 5,000xg for 5min.
2. Carefully open the tube and add 100ul of sterile water to dissolve the DNA.
3. Close the tube and incubate for 10 minutes at room temperature.
4. Briefly vortex the tube and then do a quick spin (less than 5000xg) to concentrate the liquid at the bottom.
5. Store the suspended plasmid at -20°C. The DNA is stable for at least one year from date of shipping when stored at -20°C.

RefSeq: [NM_001010940.3](#)

RefSeq Size: 851 bp

RefSeq ORF: 690 bp

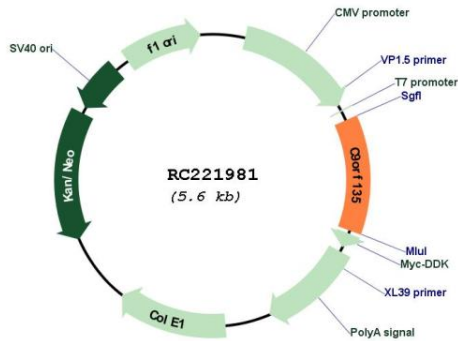
Locus ID: 138255

UniProt ID: Q5VTT2

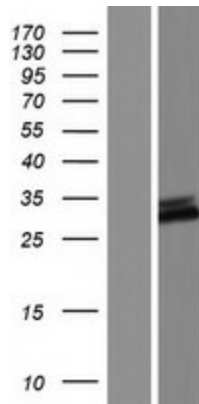
Cytogenetics: 9q21.12

MW: 26.3 kDa

Product images:



Circular map for RC221981



Western blot validation of overexpression lysate (Cat# [LY423243]) using anti-DDK antibody (Cat# [TA50011-100]). Left: Cell lysates from untransfected HEK293T cells; Right: Cell lysates from HEK293T cells transfected with RC221981 using transfection reagent MegaTran 2.0 (Cat# [TT210002]).