

Product datasheet for **RC221980**

KDM1B (NM_153042) Human Tagged ORF Clone

Product data:

Product Type:	Expression Plasmids
Product Name:	KDM1B (NM_153042) Human Tagged ORF Clone
Tag:	Myc-DDK
Symbol:	KDM1B
Synonyms:	AOF1; C6orf193; LSD2
Mammalian Cell Selection:	Neomycin
Vector:	pCMV6-Entry (PS100001)
E. coli Selection:	Kanamycin (25 ug/mL)



[View online »](#)

ORF Nucleotide Sequence:

>RC221980 representing NM_153042
 Red=Cloning site Blue=ORF Green=Tags(s)

TTTTGTAATACGACTCACTATAGGGCGGCCGGAATTCGTCGACTGGATCCGGTACCGAGGAGATCTGCC
 GCC**CGCATCGCC**

ATGGCACTCCACGGGGAGGACAAAGAAAAAGCATCTTTTGTATTCTCCGGATAGCCTTCCTTTGA
 GGAGCTCCGGTAGGCAGGCGAAAAAGAAAGCAACAGAGACAACAGATGAGGATGAAGATGGTGGCTCAGA
 GAAGAAGTACAGGAAATGTGAAAAGGCAGGCTGTACGGCAACATGTCCTGTGTGCTTTGCAAGTGCTTCT
 GAAAGATGTGCCAAAAATGGCTACACCTCCCGATGGTATCATCTCTCTGTGGGGAACATTTCTGTAATG
 AATGCTTTGACCATTACTACAGAAAGCCATAAGGATGGATGACAAAATACTACATGGAAAAAATATG
 GACTAGCAATGGCAAACCGAACCTAGTCCAAAGCTTTCATGGCAGACCAGCAACTCCCCTACTGGGT
 CAGTGTACAAAACCTGAGTGTAGAAAATGGAGGCAGCTTACCAAGGAAATCCAGCTTACTCCACAGATAG
 CCAAGACTTATCGATGCGGTATGAAACCAATACTGCTATTAAGCCTGAGACCTCAGATCATTGTTCCCT
 CCCAGAGGATCTAGAAGCTTACTCCTCAGAAATGTATTCTCAGATCATCGTCCGGGGTCTCGTGCCT
 ATTCGATGCGTTCAGGAAGTGGAGAGAATACTGTATTTTATGACCAGAAAAGGTCTCATCAACACTGGAG
 TTCTCAGCGTGGGAGCCGACAGTATCTTCTCCCTAAGGACTACCACAATAAATCAGTCATCATTATCGG
 GGCTGGTCCAGCAGGATTAGCAGCTGCTAGGCAACTGCATAACTTTGGAATTAAGGTGACTGTCTGGAA
 GCCAAAGACAGAAATTGGAGGCCGAGTCTGGGATGATAAATCTTTTAAAGGCGTCACAGTGGGAAGAGGAG
 CTCAGATTGTCAATGGGTGATTAACAACCCAGTAGCATTAAATGTGTGAACAAGTATCTGCTCGCTCGTG
 GGACCACAATGAATCTTTGCCAGTTTGTCTGGTACCACACTCTGCTAACTCCCGGGTACTCGGTGATA
 ATTGAAAACCTGGCAGAAGGGCTTGACATCAACTCAAATCTCCAGTGCAGTGTATTGATTATTCTGGAG
 ATGAAGTGCAGGTTACCACTACAGATGGCAGGATTTCTGCACAAAAGGTATTAGTCACTGTACCAC
 GGCTTTACTACAGAAAGGTGCCATTTCAGTTAATCCACCGTTGTACAGAGAAGAAGATGAAGGCTATCAAC
 AGCTTAGGCGCAGGCATCATTGAAAAGATTGCCTTGAATTTCCGTATAGATTTTGGGACAGTAAAGTAC
 AAGGGGCTGACTTTTTTGGTACGTTTCTCCAGTCCAGCAAGCGAGGGCTTTTTGCCGTGTTCTATGA
 CATGGATCCCCAGAAGAAGCACAGCGTGTGATGTCTGTGATTGCCGGGGAGGCTGTGCGATCCGTGAGG
 ACCCTGGACGACAAACAGGTGCTGCAGCAGTGCATGGCCACGCTCCGGGAGCTGTTCAAGGAGCAGGAGG
 TCCAGATCCCACAAAGTATTTTGTCACTCGGTGGAGCACAGCCATGGATCCAGATGGCATAACAGTTT
 TGTGAAGACAGGTGGAAGTGGGAGGCCTACGATATCATTGCTGAAGACATTCAAGGAACCGTCTTTTTT
 GCTGGTGAAGCAACAAACAGGCATTTCCACAAACTGTTACAGGGGCATATTTGAGTGGCGTTCGAGAAG
 CAAGCAAGATTGCAGCATT

ACGCGTACGCGGCCGCTCGAGCAGAAACTCATCTCAGAAGAGGATCTGGCAGCAAATGATATCCTGGATT
 ACAAGGATGACGACGATAAGGTTTAA

Protein Sequence:

>RC221980 representing NM_153042
 Red=Cloning site Green=Tags(s)

MATPRGRTKKKASFHDSPDSLPLRSSGRQAKKATETTTDEDEDGGSEKKYRKCEKAGCTATCPVCFASAS
 ERCAKNGYTSRWYHLSGGEHFCNECFDHYRSHKDGDKYTTWKKIWTNSNGKTEPSPKAFMADQQLPYWV
 QCTKPECRKWRQLTKEIQLTPQIAKTYRCGMKPNTAIPKETS DHCSLPEDLEALTPQKCIPIHIIVRGLVR
 IRCVQEVERILYFMTRKGLINTGVLVSVGADQYLLPKDYHNKSVIIIGAGPAGLAAARQLHNFVGIKVTVLE
 AKDRIGGRVWDDKSFKGVTVGRGAQIVNGCINNVALMCEQVSARSWDHNEFFAQFAGDHTLLTPGYSVI
 IEKLAEGLDIQLKSPVQCIDYSGDEVQVTTTDTGTGYSQKVLVTVPLALLQKGAIQFNPLSEKMKAIN
 SLGAGIIEKIALQFPYRFWDSKVQGFVGHVPPSASKRGLFAVFYDMDPQKHSVLM SVIAGEAVASVR
 TLDDKQVLQQCMATLRELFKEQVDPPTKYFVTRWSTDPWIQMAYSFVKTGGSGEAYDIIAEDIQGTVFV
 AGEATNRHFPQTVTGAYLSGVREASKIAAF

TRTRPLEQKLISEEDLAANDILDYKDDDDKV

Chromatograms:

https://cdn.origene.com/chromatograms/mk6161_a08.zip

Restriction Sites: SgfI-MluI

Cloning Scheme:



ACCN: NM_153042

ORF Size: 1770 bp

OTI Disclaimer: The molecular sequence of this clone aligns with the gene accession number as a point of reference only. However, individual transcript sequences of the same gene can differ through naturally occurring variations (e.g. polymorphisms), each with its own valid existence. This clone is substantially in agreement with the reference, but a complete review of all prevailing variants is recommended prior to use. [More info](#)

OTI Annotation: This clone was engineered to express the complete ORF with an expression tag. Expression varies depending on the nature of the gene.

Components: The ORF clone is ion-exchange column purified and shipped in a 2D barcoded Matrix tube containing 10ug of transfection-ready, dried plasmid DNA (reconstitute with 100 ul of water).

- Reconstitution Method:
1. Centrifuge at 5,000xg for 5min.
 2. Carefully open the tube and add 100ul of sterile water to dissolve the DNA.
 3. Close the tube and incubate for 10 minutes at room temperature.
 4. Briefly vortex the tube and then do a quick spin (less than 5000xg) to concentrate the liquid at the bottom.
 5. Store the suspended plasmid at -20°C. The DNA is stable for at least one year from date of shipping when stored at -20°C.

RefSeq: [NM_153042.4](#)

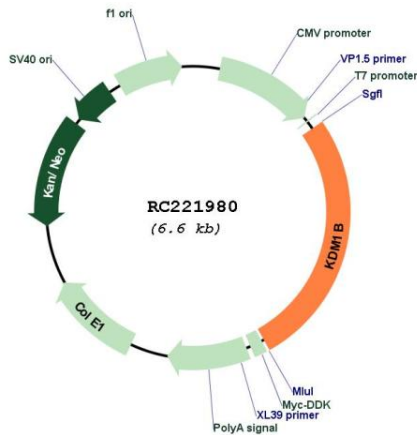
RefSeq Size: 3811 bp

RefSeq ORF: 1773 bp

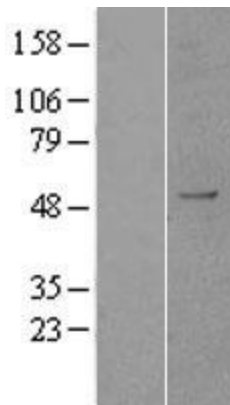
Locus ID: 221656

UniProt ID: [Q8NB78](#)
Cytogenetics: 6p22.3
Domains: Amino_oxidase
Protein Families: Druggable Genome
MW: 65.5 kDa
Gene Summary: Flavin-dependent histone demethylases, such as KDM1B, regulate histone lysine methylation, an epigenetic mark that regulates gene expression and chromatin function (Karytinovs et al., 2009 [PubMed 19407342]).[supplied by OMIM, Oct 2009]

Product images:



Circular map for RC221980



Western blot validation of overexpression lysate (Cat# [LY403510]) using anti-DDK antibody (Cat# [TA50011-100]). Left: Cell lysates from untransfected HEK293T cells; Right: Cell lysates from HEK293T cells transfected with RC221980 using transfection reagent MegaTran 2.0 (Cat# [TT210002]).