

Product datasheet for **RC221960**

TMEM181 (NM_020823) Human Tagged ORF Clone

Product data:

Product Type:	Expression Plasmids
Product Name:	TMEM181 (NM_020823) Human Tagged ORF Clone
Tag:	Myc-DDK
Symbol:	TMEM181
Synonyms:	GPR178; KIAA1423
Mammalian Cell Selection:	Neomycin
Vector:	pCMV6-Entry (PS100001)
E. coli Selection:	Kanamycin (25 ug/mL)



[View online »](#)

ORF Nucleotide Sequence:

>RC221960 representing NM_020823
 Red=Cloning site Blue=ORF Green=Tags(s)

TTTTGTAATACGACTCACTATAGGGCGGCCGGGAATTCGTCGACTGGATCCGGTACCGAGGAGATCTGCC
 GCC**CGCATCGCC**

ATGGGCGCGGCTCCCTCCCCACTCAGGCCTCTTACGGGGCGGGGGCCGGGTCCCCAGCCCCACCC
 GCGCCGTGTCAGCTCCTCGCGTCTCGCGGCGGAGCCCTGAGCGCACTGGGTCCGAGTCTGCGCGCCC
 CCTCACCACTCCCCCGACCTGCTCCTCCTCGTCCCGCCAGCGGCCAGCAGCCCGATCCCCAG
 TGCTGGGAGAAGAGAGGGGGCGCAGGCGGCGACACAAAGGGTGGAGCGCGGGACCGGGACCCGGGAGGC
 TGCGCGGCATGGACGCCGAGTACCCTGCCTTTGAGCCCCGCTCTGCAGCGAGCTCAAGCACCTGTGCCG
 GCGGCTGCGGGAAGCGTACCGCGAGCTCAAGGAGGACCTCACGCCCTCAAGGATGACCGCTACTACAGG
 CTGGCGCCATGCGGCTCTACACGCTCTCAAGCGCCACTTTGCCTCGTGTTCGCTCTTCTCATCT
 GCTTTGGCCTGACCATCTTCGTTGGGATCAGAGGACCTAAAGTGATCCAGACTTCTGCGGCTAATTTTTC
 ACTAAATAATAGCAAAAAGCTAAAGCCAATTCAAATACTTTCAAATCCACTGTCTACATACAATCAGCAA
 CTATGGCTGACATGTGTTGTTGAGTTGGATCAATCAAAAGAACTTCTATTAAGACAAGCTTTCCCATGA
 CTGTTAAAGTCGATGGTGTAGCTCAAGATGGAACCACGATGTACATTCATAACAAAGTTCACAACCGGAC
 AAGGACCTCACATGTGCAGGAAATGTGCGGAGATTATTGTGGCTCACCTTGGCTACCTGAACTACACT
 CAGTATACAGTGATAGTGGGATTTGAACACCTGAAGCTCCCCATCAAGGGAATGAACTTCACATGGAAGA
 CTTATAACCTGCCTTCTCCCGTTGGAATCTGGTCCGGTTTTTCTTTGTGGTGTCACTTCATCGT
 CACTTGCCTGTTGCGCATTCCCTCCGAAATTTCCATGAGAGACTGGGCATCGAGCAGAAGTGGATG
 TCTGTTCTCCTGCCTCTGCTGCTACTTTACAATGATCCGTTCTTCCCCCTCTCCTCTGCTCAACAGCT
 GGCTCCCAGGATGCTGGATGACCTCTTTCAGTCCATGTTCTGTCGCCCTGCTGCTCTTGGCTGTG
 CGTGTACCACGGGATTCGTGTCCAGGGAGAAAGAAAGTGTAACTTTCTATTTGCCTAAATTCTTCATT
 GTTGGACTATTGTGGTGGCTTCTGTTACGCTAGGAATATGGCAAACAGTTAACGAATTACATGATCCAA
 TGTACCAGTATCGAGTTGATACCGGAAATTTTCAGGGAATGAAGTCTTCTTCATGGTGGTGGCAGCGGT
 GTACATTCTGTACCTCTTGTCTTGATAGTGGGGCGTGTCCGAGCTACGTACATGCCTTATGTGGAT
 CTCAGGTTGAAATTTTGGACTGCATTGACTTTCGTAGTACTTGTGATTAGCATCGCCATCCTTTATTTGA
 GATTTGGGGCGCAAGTACTACAAGACAATTTGTAGCAGAGCTGTCAACTCACTACCAGAATTCAGCCGA
 GTTCTTATCTTTCTATGGCCTGTGAACCTCTATCTACACCTTGGCCTTTGTATATTCCATCGAAG
 AATGCCCTCTATGAGTCCAGCTGAAAGACAATCTGCCTTCTCCATGCTGAATGACTCGGATGATGATG
 TGATTTATGGGAGTGACTATGAGGAAATGCCGCTGCAGAACGCCAGGCCATCCGGGCCAAGTACAAGGA
 GGAGTCAGATAGTGAC

ACGCGTACGCGGCCGCTCGAGCAGAACTCATCTCAGAAGAGGATCTGGCAGCAAATGATATCCTGGATT
 ACAAGGATGACGACGATAAGGTTTAA

Protein Sequence:

>RC221960 representing NM_020823
 Red=Cloning site Green=Tags(s)

MGAAPSPTQASSRGGGPPAPTRAVSSSSRRAGGALSALGPSPARPLTSPAPAPPPRSRPARQQPDPQ
 CWEKRGAGGDTKGAAGPGPGRRLRGMDAEYPAFEPPLCSELKHLCRRLREAYRELKEDLTPFKDDRYR
 LAPMRLYTLKRHFVLFVVFVFCFGLTIFVGIKPKVIQTSANFSLNNSKLLKPIQILSNPLSTYNQQ
 LWLTCVVELDQSKETSIKTSFPMTVKVDGVAQDGTMYIHNKVNHRTRLTCAGKCAEIIVAHLGYLNYT
 QYTVIVGFEHLKLPKGMNFTWKTYNPAFSLRLEIWFRRFFVVLTFIVTCLFAHSLRKFSSMRDWGIEQKWM
 SVLLPLLLLYNDPFFPLSFLVNSWLPMLDDLQSMFLCALLLFWLVCYHGIQVQGERKCLTFYLPKFFI
 VGLLWLASVTLGIWQTVNELHDPYQYRVDGTFQGMKVFMMVVAAYIYLLFLIVRACSELRHMPYVD
 LRLKFLTALTFVVLVISIAILYLRFGAQLQDNFVAELSTHYQNSAEFLSFYGLLNFLYLTAFVYSPSK
 NALYESQLKDNPAFMSMLNDSDDDVIYGSDEEMPLQNGQAIRAKYKEESDSD

TRTRPLEQKLISEEDLAANDILDYKDDDDKV

Chromatograms: https://cdn.origene.com/chromatograms/mk8010_e01.zip

Restriction Sites: SgfI-MluI

Cloning Scheme:



ACCN: NM_020823

ORF Size: 1836 bp

OTI Disclaimer: The molecular sequence of this clone aligns with the gene accession number as a point of reference only. However, individual transcript sequences of the same gene can differ through naturally occurring variations (e.g. polymorphisms), each with its own valid existence. This clone is substantially in agreement with the reference, but a complete review of all prevailing variants is recommended prior to use. [More info](#)

OTI Annotation: This clone was engineered to express the complete ORF with an expression tag. Expression varies depending on the nature of the gene.

Components: The ORF clone is ion-exchange column purified and shipped in a 2D barcoded Matrix tube containing 10ug of transfection-ready, dried plasmid DNA (reconstitute with 100 ul of water).

- Reconstitution Method:**
1. Centrifuge at 5,000xg for 5min.
 2. Carefully open the tube and add 100ul of sterile water to dissolve the DNA.
 3. Close the tube and incubate for 10 minutes at room temperature.
 4. Briefly vortex the tube and then do a quick spin (less than 5000xg) to concentrate the liquid at the bottom.
 5. Store the suspended plasmid at -20°C. The DNA is stable for at least one year from date of shipping when stored at -20°C.

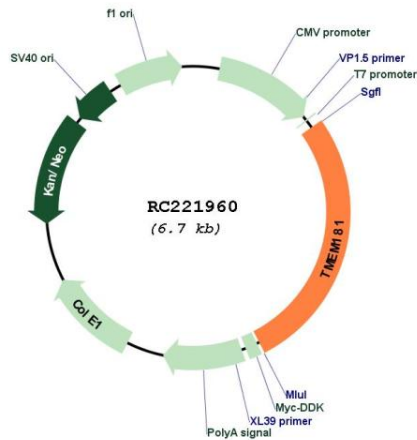
RefSeq: [NM_020823.1](#), [NP_065874.1](#)

RefSeq Size: 5397 bp

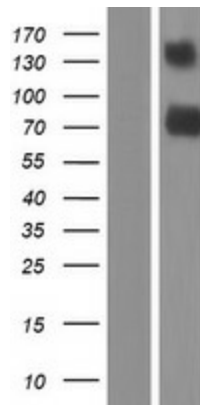
RefSeq ORF: 1551 bp

Locus ID: 57583
UniProt ID: [Q9P2C4](#)
Cytogenetics: 6q25.3
Protein Families: Transmembrane
MW: 69.1 kDa
Gene Summary: The TMEM181 gene encodes a putative G protein-coupled receptor expressed on the cell surface (Carette et al., 2009 [PubMed 19965467]; Wollscheid et al., 2009 [PubMed 19349973]). [supplied by OMIM, Jan 2010]

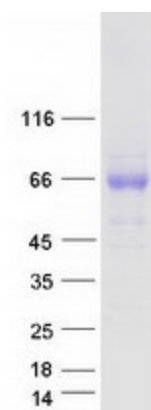
Product images:



Circular map for RC221960



Western blot validation of overexpression lysate (Cat# [LY412294]) using anti-DDK antibody (Cat# [TA50011-100]). Left: Cell lysates from untransfected HEK293T cells; Right: Cell lysates from HEK293T cells transfected with RC221960 using transfection reagent MegaTran 2.0 (Cat# [TT210002]).



Coomassie blue staining of purified TMEM181 protein (Cat# [TP321960]). The protein was produced from HEK293T cells transfected with TMEM181 cDNA clone (Cat# RC221960) using MegaTran 2.0 (Cat# [TT210002]).