

## Product datasheet for **RC221956**

### Endoplasmic reticulum metalloproteinase 1 (ERMP1) (NM\_024896) Human Tagged ORF Clone

#### Product data:

Product Type:	Expression Plasmids
Product Name:	Endoplasmic reticulum metalloproteinase 1 (ERMP1) (NM_024896) Human Tagged ORF Clone
Tag:	Myc-DDK
Symbol:	Endoplasmic reticulum metalloproteinase 1
Synonyms:	bA207C16.3; FXNA; KIAA1815
Mammalian Cell Selection:	Neomycin
Vector:	pCMV6-Entry (PS100001)
E. coli Selection:	Kanamycin (25 ug/mL)



[View online »](#)

**ORF Nucleotide Sequence:**

>RC221956 representing NM\_024896  
 Red=Cloning site Blue=ORF Green=Tags(s)

TTTTGTAATACGACTCACTATAGGGCGGCCGGGAATTCGTCGACTGGATCCGGTACCGAGGAGATCTGCC  
 GCC**CGGATCGCC**

ATGGAGTGGGTTCTGAGTCGGCTGCTGTGAGGCGGCACCGCTCGGAGTAGAGCGTCGAGAGGGAGCGG  
 CGGCCGCCACCGCCGAGAGGGAGGCCCGAGCGCAGGAGCCTCTGGTGGATGGGTGCAGCGCGCGCGG  
 GAGGACGCGGAAGAGGAGCCCGGGGTAGCGCGCGCGAGCAGGGCGCGGGGACCGGCTGTCTGAG  
 GTGCGCGCGCGCTGGGGCTCGCGCTCTACCTGATCGCGCTGCGGACGCTGGTGCAGCTCTCGTGCAGC  
 AGCTCGTGTACGCGGGCCGCTGGACACCGGGGAGTTCGACGCGCTCCAAGCCAGGGATTATCTTGA  
 ACACATAACCTCCATTGGCCCCAGGACTACAGGAAGTCCAGAAAATGAAATTCGACCGTGCCTACCTT  
 TTGGAACAGATTAAGTGAAGTCAAAGCAACAGCCTTCATAAGATTTAGTAGATGTACAACGGC  
 CCACAGGCTCTTTAGCATTGATTTCTGGGAGGTTTTACAAGCTATTATGACAACATCACCAATGTTGT  
 GGTAAAGCTGGAACCCAGAGATGGAGCCAGCATGCTGTCTTGGTAATTGTCATTTTGACTCAGTAGCA  
 AACTCACAGGTGCCAGTGATGATGCAGTTAGCTGCTCAGTGATGCTGGAAGTCCTTCGCGTCTGTCAA  
 CATCTTCAGAAGCCTTGATCATGCTGTCAATTTCTCTTTAATGGTGTGAGGAAAATGTCTTGAAGC  
 CAGTCATGGTTTCATTAAGTACGACCCCTGGGCTAGCTTGATTCTGTCATTATTAACCTAGAGGCAGCA  
 GGTGTAGGAGGAAAGAAGTGTATTCCAAACAGGTCCTGAAAATCCTTGGTTGGTTCAAGCTTATGTTT  
 CAGCAGCTAAACCCCTTTTGTCTGTGGTGGCTCAGGAGGTTTTTCAGAGTGGAAATCATTCTTCAGA  
 TACTGACTTTTCGATCTACAGGGATTTGGGAACATCCAGGAATAGACTTAGCTTTTATTGAGAATGGA  
 TACATTTATCACCAAGTATGACACAGCGGACAGAATTCTAACAGATTCATTCAGAGAGCAGGTGACA  
 ACATTTTAGCAGTCTTAAGCATCTAGCTACATCTGATATGCTGGCTGCTGCTTAAAGTATCGACATGG  
 AAACATGGTCTTCTTTGATGTGCTGGCCCTGTTTGTTCATTGCCTACCCCTCTCGTATTGGCTCAATCATA  
 AACTACATGGTGGTAATGGGTGTTGTTTTGACCTGGGCAAAAAATTTTTGCAGCCCAAACATAAGACTG  
 GTAACATAAGAAGGACTTCTTGTGTGGACTTGGCATCACTTTGATCAGCTGGTTCAGTGCCTTGTAC  
 CGTTCTCATTATAGCAGTGTTCATCTCTTATTGGACAGTCTCTCATGGTATAACCCTTCTATGTC  
 TCCGTTTGTCTGTATGGAAGTCAACTGTAGCCAAAATAACTTATACATACTTTCGCAAAAGATTTT  
 ATTACATGAATGCCAGTGCCAGTATCTGGGAGAAGTATTTTTGACATTTGCTGTTTGTCCATTGCTG  
 TTTTCTTGTACCCTCACTTACCAAGGACTTTGCTCGCGTATTAGTGTCTGCTGGTAGCATTCCCA  
 TTGCTCACAAAGCTCTGTGTGCATAAGGACTTCAAGCAGCATGGTGCCCAAGGAAAATTTATTGCTTTT  
 ACCTTTTGGGGATGTTTATCCTTATCTTATGCATTGTACCTCATCTGGGCAGTATTTGAGATGTTTAC  
 CCCTATCCTCGGGAGAAGTGGTTCTGAAATCCCACCTGATGTTGTGCTGGCATCCATTTTGGCTGGCTGT  
 ACAATGATTCTCTCGTCCTATTTTATTAACCTCATCTACCTTGCCAAGAGCACAAAAAAACCATGCTAA  
 CTTTAACTTTGGTATGTGCAATTACATTCCTCTTGTGTCAGTGGAAACATTTTTCCATATAGCTCCAA  
 TCCTGCTAATCCGAAGCCAAAGAGAGTGTTCCTCAGCATATGACTAGAACATCCATGACTTGGAAAGGA  
 AATGCAGTTAAACGGGACTCTGGAATATGGATCAATGGGTTTGATTATACTGGAATTTCTCACATAACCC  
 CTCACATTCCTGAGATCAATGATAGTATCCGAGCTCACTGTGAGGAGAATGCACCTCTTTGTGGTTTTCC  
 TTGGTATCTTCCAGTGCCTTTCTGATCAGGAAAACTGGTATCTTCTGCCCCAGAAGTTCTCCAAGA  
 AATCCTCCTCATTCCGACTCATATCCAAGAACAGACACCTTGGGATTCTATAAAATGACTTTTGAAG  
 CAACAGGACCAAGCCATATGTCCTTCTATGTTTCGAGCCCAAAAGGGTCAACACTTTCTCAGTGGTCTCT  
 TGGCAATGGCACCCAGTCACAAGTAAAGGAGGAGACTACTTTGTCTTTTACTCCATGGACTCCAGGCC  
 TCTGCATGGCAGTCTGGATAGAAGTGCAGGTTTCAGAAGAACATCCTGAAGGAATGGTACCCTGGCCA  
 TTGCTGCCACTATCTGTCTGGGAAGACAAGAGATCCCCTCACTGGATGCTCTGAAGGAAAAGTTCC  
 AGATTGGACATTTCCCTGCTGGGTGTGCACCTACGATCTCTTTGATTT

**ACGCGT**ACGCGGCCGCTCGAGCAGAACTCATCTCAGAAGAGGATCTGGCAGCAAATGATATCCTGGATT  
 ACAAGGATGACGACGATAAGGTTTAA

**Protein Sequence:** >RC221956 representing NM\_024896  
Red=Cloning site Green=Tags(s)

MEWGSESAVRRHRVGVVERREGAAAAPPEREARAQEPLVDGCSGGGRTRKRSPGGSGGASRGAGTGLSE  
 VRAALGLALYLIALRTLVLQSLQQLVLRGAAGHRGEFDALQARDYLEHITSIGPRTTGSPENEILTVHYL  
 LEQIKLIEVQSNLHKISVDVQRPTGSFSIDFLGGFTSYDINITNVVVKLEPRDGAQHAVLANCFDVA  
 NSPGASDDAVSVMLEVLRLVLTSSSEALHHAIVIFLFNGAEENVLQASHGFIHQHPWASLIRAFINLEAA  
 GVGKELVFQTGPENPWLQAYVSAAKHPFASVVAQEVFQSGIIPSDTDFRIYRDFGNIPGIDLAFIENG  
 YIYHTKYDTADRILTDSIQRAGDNILAVLKLATSDMLAAASKYRHGNMVFVDVGLFVIAYPYRIGSII  
 NYMVMGVVLYLGGKFLQPKHKTGNYKKDFLCGLGITLISWFTSLVTVLIIAVFISLIGQSLSWYNHFYV  
 SVCLYGTATVAKIILIHTLAKRFYMNASAYLGEVFFDISLVHCCFLVTLTYQGLCSAFISAVWVAFP  
 LLTKLCVHKDFKQGAQKFIAYLLGMFIPYLALYLWAVFEMFTPIILGRSGSEIPPDVVLASILAGC  
 TMILSSYFINFIYLAKSTKKTMLTLTLVCAITFLLVCSGTFPPYSSNPANPKPKRVFLQHMTRTFHDLEG  
 NAVKRDSGIWINGFDYTGISHITPHIPEINDSIRAHCEENAPLCGFPWYLPVHFLIRKNWYLPAPVSPR  
 NPPHFRLISKEQTPWDSIKLTFEATGSPSHMSFYVRAHKGSTLSQWLSLNGTPTVTSKGGDYFVYSHGLQA  
 SAWQFWIEVQVSEEHPEGMVTVIAAHYLSGEDKRSPQLDALKEKFPDWTFPSAWVCTYDLFV

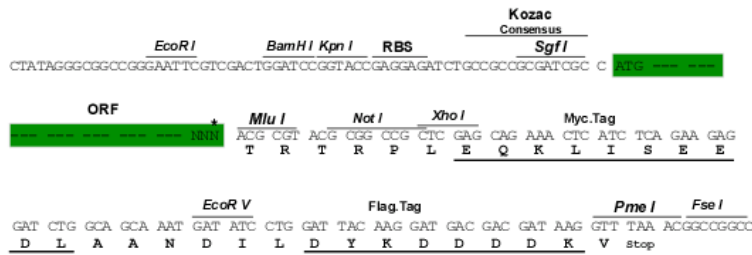
TRTRPLEQKLISEEDLAANDILDYKDDDDKV

**Chromatograms:** [https://cdn.origene.com/chromatograms/mk8119\\_h01.zip](https://cdn.origene.com/chromatograms/mk8119_h01.zip)

**Restriction Sites:** SgfI-MluI

**Cloning Scheme:**

Cloning sites used for ORF Shuttling:

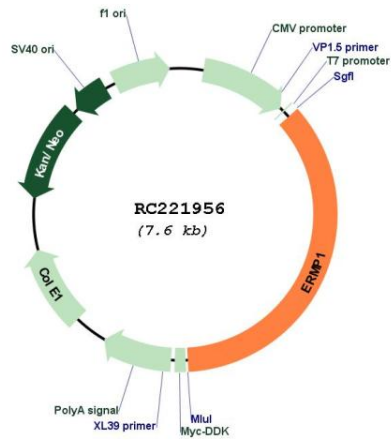


\* The last codon before the Stop codon of the ORF

**ACCN:** NM\_024896

<b>ORF Size:</b>	2712 bp
<b>OTI Disclaimer:</b>	The molecular sequence of this clone aligns with the gene accession number as a point of reference only. However, individual transcript sequences of the same gene can differ through naturally occurring variations (e.g. polymorphisms), each with its own valid existence. This clone is substantially in agreement with the reference, but a complete review of all prevailing variants is recommended prior to use. <a href="#">More info</a>
<b>OTI Annotation:</b>	This clone was engineered to express the complete ORF with an expression tag. Expression varies depending on the nature of the gene.
<b>Components:</b>	The ORF clone is ion-exchange column purified and shipped in a 2D barcoded Matrix tube containing 10ug of transfection-ready, dried plasmid DNA (reconstitute with 100 ul of water).
<b>Reconstitution Method:</b>	<ol style="list-style-type: none"><li>1. Centrifuge at 5,000xg for 5min.</li><li>2. Carefully open the tube and add 100ul of sterile water to dissolve the DNA.</li><li>3. Close the tube and incubate for 10 minutes at room temperature.</li><li>4. Briefly vortex the tube and then do a quick spin (less than 5000xg) to concentrate the liquid at the bottom.</li><li>5. Store the suspended plasmid at -20°C. The DNA is stable for at least one year from date of shipping when stored at -20°C.</li></ol>
<b>RefSeq:</b>	<a href="#">NM_024896.3</a>
<b>RefSeq Size:</b>	5355 bp
<b>RefSeq ORF:</b>	2715 bp
<b>Locus ID:</b>	79956
<b>UniProt ID:</b>	<a href="#">Q7Z2K6</a>
<b>Cytogenetics:</b>	9p24.1
<b>Protein Families:</b>	Protease, Transmembrane
<b>MW:</b>	100.7 kDa
<b>Gene Summary:</b>	Within the ovary, required for the organization of somatic cells and oocytes into discrete follicular structures.[UniProtKB/Swiss-Prot Function]

Product images:



Circular map for RC221956