

## Product datasheet for RC221954

### OPA1L (WBP1L) (NM\_017787) Human Tagged ORF Clone

#### Product data:

Product Type:	Expression Plasmids
Product Name:	OPA1L (WBP1L) (NM_017787) Human Tagged ORF Clone
Tag:	Myc-DDK
Symbol:	OPA1L
Synonyms:	C10orf26; OPA1L; OPAL1
Mammalian Cell Selection:	Neomycin
Vector:	pCMV6-Entry (PS100001)
E. coli Selection:	Kanamycin (25 ug/mL)
ORF Nucleotide Sequence:	>RC221954 ORF sequence Red=Cloning site Blue=ORF Green=Tags(s)

TTTTGTAATACGACTCACTATAGGGCGCCGGGAATTCGTCGACTGGATCCGGTACCGAGGAGATCTGCC  
GCC**CGATCGCC**

ATGCCCTTCTTTGGGTCTTAGACAGGATAAGGAAGCCTGTGTGGGTACCAACAATCAAAGCTACATCT  
GTGACACAGGACTGCTGTGGACAGTCTCAGTGCTGCAACTACTACTATGAACTCTGGTGGTTCTGGCT  
GGTGTGGACCATCATCATCCTGAGCTGCTGCTGTGTTGCCACCACCGCCGAGCCAAGCACCGCCTT  
CAGGCCAGCAGCGGCAACATGAAATCAACCTGATCGCTTACCGAGAAGCCACAATTACTCAGCGCTGC  
CATTTTATTTAGGTTTTGCCAACTATTTACTACCTCCTTATGAGGAAGTGGTGAACCGACCTCCAAC  
TCCTCCCCACCATACAGTGCCTTCCAGCTACAGCAGCAGCAGCTGCTGCCTCCACAGTGTGGCCCTGCA  
GGTGGCAGTCCCCGGGCATCGATCCCACCAGGGGATCCCAGGGGGCACAGAGCAGCCCTTGTCTGAGC  
CCAGCAGAAGCAGCACAAGACCCCAAGCATCGCTGACCTGATCCCTCTGACCTACCAGTTGACCGAGC  
AGCCACCAAGCCCGAGGGATGGAGCCAGTGGCTCTGTGGCTGGCTGGGGGAGCTGGACCCGGGGGCC  
TTCCTGGACAAAGATGCAGAATGTAGGGAGGAGCTGTGAAAGATGACAGCTCTGAACACGGCGCACCCG  
ACAGCAAAGAGAAGACGCCTGGGAGACATCGCCGCTTACAGGTGACTCGGGCATTGAAGTGTGTGTG  
CAACCGGGGCCACCATGACGATGACCTCAAAGAGTTCAACACACTCATCGATGATGCTCTGGATGGGCC  
CTGGACTTCTGCGACAGCTGCCATGTGCGGCCCCCTGGTGTGAGGAGGAAGGCCTCTGTGAGTCCCTG  
AGGAGCAGGCTCGAGAGCCTGGGCACCCGCACCTGCCACGGCCCGCCGCATGCCTGCTGTAACCCAT  
CAACGAGCAGGACTCTCCAACCTCCAGAGCAGCAGCTCCCCAGC

**ACGCGT**ACGCGGCCGCTCGAGCAGAACTCATCTCAGAAGAGGATCTGGCAGCAAATGATATCCTGGATT  
ACAAGGATGACGACGATAAGGTTTAA



[View online »](#)

**Protein Sequence:** >RC221954 protein sequence  
Red=Cloning site Green=Tags(s)

MPFLLGLRQDKEACVGTNNQSYICDTGHCCGQSQCENYYELWWFWLVWTIIIIISCCCVCHHRAKHRL  
 QAQRQHEINLIAYREAHNYSALPFYFRFLPNYLLPPYEEVNRPPTPPPYSAFLQQQQLLPPQCGPA  
 GGSPPGIDPTRGSQAQSSPLSEPSRSSTRPPSIADPDSDLPVDRAATKAPGMPESGSVAGLGELDPGA  
 FLDKDAECREELLKDDSSSEHGAPDSKEKTPGRHRRFTGDSGIEVCVNRGHDDDLKEFNTLIDDALDGP  
 LDFCDSCHVRPPGDEEEGLCQSSEEQAREPGPHLPRPPACLILLNTINEQDPSNSQSSSSPS

TRTRPLEQKLISEEDLAANDILDYKDDDDKV

**Chromatograms:** [https://cdn.origene.com/chromatograms/mk6444\\_h12.zip](https://cdn.origene.com/chromatograms/mk6444_h12.zip)

**Restriction Sites:** SgfI-MluI

**Cloning Scheme:**



**ACCN:** NM\_017787

**ORF Size:** 1026 bp

**OTI Disclaimer:** The molecular sequence of this clone aligns with the gene accession number as a point of reference only. However, individual transcript sequences of the same gene can differ through naturally occurring variations (e.g. polymorphisms), each with its own valid existence. This clone is substantially in agreement with the reference, but a complete review of all prevailing variants is recommended prior to use. [More info](#)

**OTI Annotation:** This clone was engineered to express the complete ORF with an expression tag. Expression varies depending on the nature of the gene.

**Components:** The ORF clone is ion-exchange column purified and shipped in a 2D barcoded Matrix tube containing 10ug of transfection-ready, dried plasmid DNA (reconstitute with 100 ul of water).

**Reconstitution Method:**

1. Centrifuge at 5,000xg for 5min.
2. Carefully open the tube and add 100ul of sterile water to dissolve the DNA.
3. Close the tube and incubate for 10 minutes at room temperature.
4. Briefly vortex the tube and then do a quick spin (less than 5000xg) to concentrate the liquid at the bottom.
5. Store the suspended plasmid at -20°C. The DNA is stable for at least one year from date of shipping when stored at -20°C.

**RefSeq:** [NM\\_017787.5](#)

**RefSeq Size:** 4236 bp

**RefSeq ORF:** 1029 bp

**Locus ID:** 54838

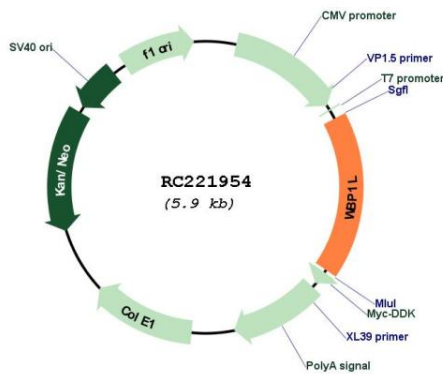
**UniProt ID:** [Q9NX94](#)

**Cytogenetics:** 10q24.32

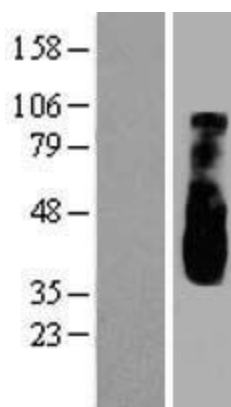
**Protein Families:** Transmembrane

**MW:** 37.8 kDa

**Product images:**



Circular map for RC221954



Western blot validation of overexpression lysate (Cat# [LY413559]) using anti-DDK antibody (Cat# [TA50011-100]). Left: Cell lysates from untransfected HEK293T cells; Right: Cell lysates from HEK293T cells transfected with RC221954 using transfection reagent MegaTran 2.0 (Cat# [TT210002]).