

Product datasheet for RC221951

MLC1 (NM_139202) Human Tagged ORF Clone

Product data:

Product Type:	Expression Plasmids
Product Name:	MLC1 (NM_139202) Human Tagged ORF Clone
Tag:	Myc-DDK
Symbol:	MLC1
Synonyms:	LVM; MLC; VL
Mammalian Cell Selection:	Neomycin
Vector:	pCMV6-Entry (PS100001)
E. coli Selection:	Kanamycin (25 ug/mL)
ORF Nucleotide Sequence:	>RC221951 ORF sequence Red=Cloning site Blue=ORF Green=Tags(s)

TTTTGTAATACGACTCACTATAGGGCGGCCGGAATTCGTCGACTGGATCCGGTACCGAGGAGATCTGCC
GCC**CGATCGCC**

ATGACCCAGGAGCCATTCAGAGAGGAGCTAGCCTATGACCGGATGCCACGCTGGAGCGGGCCGGCAAG
ACCCCGCCAGCTATGCCCCAGACGCGAAGCCGAGCGACCTGCAGCTGTGGAAGAGACTGCCCCCTGCTT
CAGCCACAAGACGTGGGTCTTCTGTGCTGATGGGGAGCTGCCTCCTGGTGACCTCGGGTTTTTCGCTG
TACCTGGGAACGTGTTCCGGCTGAGATGGATTACTTGCCTGTGCTGCAGGCTCTGCATCCCCTCGG
CAATTGTGAGCTTACCCTCTCCAGGAGGAACCCAATGTGATCCCACTTTCAGATATTGTTTGTTC
CAGTTTTGCTGTGACCACTACGTGTTAATTTGGTTGGATGCAAAGTAGTCTGAACCCATCAGCAATA
AACATCAACTTCAACCTCATCTGCTGCTCCTGCTGGAGCTGCTCATGGCGGCCACGGTATCATCGCTG
CACGGTCCAGCGAGGAGGACTGCAAGAAAAAGAAGGGCTCCATGTCTGACAGCGCCAACATTCTGGACGA
AGTGCCATTTCTGCTCGGGTCTGAAATCTTACTCAGTCGTCGAGGTAATCGCAGGCATCTCTGCCGTC
CTCGGGGGGATCATTGCCCTGAACGTGGATGACTCAGTTTCAGGCCACACCTCTCAGTGACGTTCTTTT
GGATCCTAGTGGCCTGCTTCCAAGTGCCATTGCCAGTCATGTGGCAGCAGAGTGTACAGCAAGTGTCT
GGTGGAGGTCCTGATTGCCATAAGCAGCCTCACGTCTCCGCTGCTGTTACAGCCTCTGGATATCTGTCA
TTCAGCATGAGAATCGTGGAGATGTTAAGGATTACCGCCAGCCATAAAACCATCCTACGATGTGC
TGCTGCTGCTGCTGCTAGTGTCTCTGCTGCAGGCCGCTCAACACGGGCACCGCCATCCAGTGCCT
GCGCTTCAAGGTCAAGGCTGCAAGGCTGCAGGTCATCCTGGGACACCCAGAACGGCCCGCAGGAGCGCCTG
GCTGGGAGGTGGCCAGGAGCCCTGAAGGAGTTCGACAAGGAGAAAGCCTGGAGAGCCGTCGTGGTGC
AAATGGCCAG

ACGCGTACGCGGCCGCTCGAGCAGAACTCATCTCAGAAGAGGATCTGGCAGCAATGATATCCTGGATT
ACAAGGATGACGACGATAAGGTTTAA



[View online »](#)

Reconstitution Method:

1. Centrifuge at 5,000xg for 5min.
2. Carefully open the tube and add 100ul of sterile water to dissolve the DNA.
3. Close the tube and incubate for 10 minutes at room temperature.
4. Briefly vortex the tube and then do a quick spin (less than 5000xg) to concentrate the liquid at the bottom.
5. Store the suspended plasmid at -20°C. The DNA is stable for at least one year from date of shipping when stored at -20°C.

RefSeq: [NM_139202.3](#)

RefSeq Size: 3599 bp

RefSeq ORF: 1134 bp

Locus ID: 23209

UniProt ID: [Q15049](#)

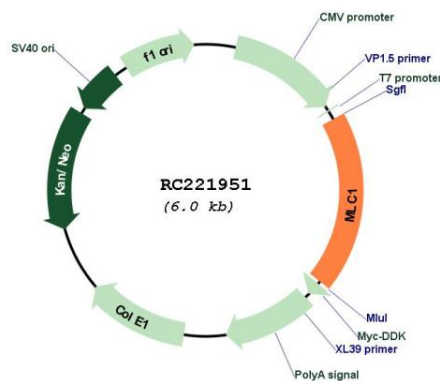
Cytogenetics: 22q13.33

Protein Families: Ion Channels: Other, Transmembrane

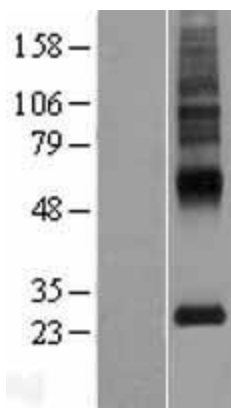
MW: 41.2 kDa

Gene Summary: The function of this gene product is unknown; however, homology to other proteins suggests that it may be an integral membrane transporter. Mutations in this gene have been associated with megalencephalic leukoencephalopathy with subcortical cysts, an autosomal recessive neurological disorder. Alternatively spliced transcript variants encoding different isoforms have been identified. [provided by RefSeq, Jul 2008]

Product images:



Circular map for RC221951



Western blot validation of overexpression lysate (Cat# [LY408351]) using anti-DDK antibody (Cat# [TA50011-100]). Left: Cell lysates from untransfected HEK293T cells; Right: Cell lysates from HEK293T cells transfected with RC221951 using transfection reagent MegaTran 2.0 (Cat# [TT210002]).