

## Product datasheet for **RC221949**

### **ARL13B (NM\_182896) Human Tagged ORF Clone**

#### **Product data:**

Product Type:	Expression Plasmids
Product Name:	ARL13B (NM_182896) Human Tagged ORF Clone
Tag:	Myc-DDK
Symbol:	ARL13B
Synonyms:	ARL2L1; JBTS8
Mammalian Cell Selection:	Neomycin
Vector:	pCMV6-Entry (PS100001)
E. coli Selection:	Kanamycin (25 ug/mL)



[View online »](#)

**ORF Nucleotide Sequence:**

>RC221949 representing NM\_182896  
 Red=Cloning site Blue=ORF Green=Tags(s)

TTTTGTAATACGACTCACTATAGGGCGGCCGGAATTCGTCGACTGGATCCGGTACCGAGGAGATCTGCC  
 GCC**CGCATCGCC**

ATGTTTCAGTCTGATGGCCAGTTGCTGCGGCTGGTTCAAGCGGTGGCGGGAGCCTGTCAGAAAGGTGACTC  
 TTTTGATGGTGGGACTTGATAATGCTGGTAAAACCGCAACAGCAAGGGAATCCAAGGAGAATACCTGA  
 AGATGTAGCTCCTACTGTTGGATTTTCAAAAATTAACCTTAGACAAGGAAAGTTTGAAGTACCATCTTT  
 GACTTGGGAGGTGGAATAAGAATTCGGGAATCTGGAAGAATTACTATGCTGAATCCTATGGGGTAATAT  
 TTGTTGTGGATCCAGTGATGAAGAGAGAATGGAAGAGACAAAAGAGGCTATGTCAGAAATGCTAAGACA  
 TCCTAGGATATCGGAAAGCCTATATTGGTGTGGCAAATAACAAGATAAAGAAGGAGCTTTAGGAGAA  
 GCTGATGTCATTGAATGTCTATCTCTGGAAAAATTGGTCAATGAGCACAAGTGCCTGTGTCAGATAGAAC  
 CATGTTACAGCAATCTCGGGTATGGAAAGAAAATTGACAAGTCCATTAAGAAAGGCTTTATTGGCTGCT  
 ACATGTTATTGCAAGAGACTTTGATGCCTTAAATGAACGCATCCAAAAGAGACAACAGAGCAGCGTGCT  
 CTTGAGGAACAAGAGAAAACAAGAAAGAGCTGAACGAGTGCGAAAATTACGAGAAGAAAGAAAACAAATG  
 AACAGGAGCAGGCTGAACTCGATGGAACCAAGTGGTCTGGCTGAGTTGGACCCAGAACCAACGAATCCTTT  
 CCAGCCAATAGCATCTGTAATCATTGAGAATGAAGGAAAATTGAAAGAGAGAAAAAACCAAAAAATG  
 GAGAAAGACAGTGATGGCTGCCACCTGAAACATAAAATGGAGCATGAGCAATAGAGACACAAGGCCAGG  
 TTAATCACAATGGCCAAAAAATAATGAATTTGGACTAGTAGAAAATTATAAGGAGGCATTAACACAGCA  
 GTTAAAGAATGAAGATGAGACAGACCGGCCATCATTGGAATCAGCTAATGGTAAAAAGAAAATAAGAAA  
 CTAAGAATGAAAAGGAACCACCGGTAGAACCCTTAATATAGATGACTGTGCTCCTGAGAGTCCAACGC  
 CACCCCAACCCCTCCTCCTGTTGGCTGGGGAACCCCTAAAGTCACTAGACTTCCAAAACCTTGAGCCTCT  
 TGGTGAACACATCATAATGATTTCTATAGGAAGCCACTGCCTCCCCTGGCTGTGCCACAGCGACCTAAC  
 AGTGATGCTCATGATGTGATCTCA

**ACGCGT**ACGCGGCCGCTCGAGCAGAACTCATCTCAGAAGAGGATCTGGCAGCAATGATATCCTGGATT  
 ACAAGGATGACGACGATAAGGTTTAA

**Protein Sequence:**

>RC221949 representing NM\_182896  
 Red=Cloning site Green=Tags(s)

MFSLMASCCGWFKRWREPVRKVTLLMVGLDNAGKTATAKGIQGEYPEDVAPTGVGFSKINLRQGFVETIF  
 DLGGGIRIRGIWKNYYAESYGVIFVVDSSDEERMEETKEAMSEMLRHPRISGKPIILVLANKQDKEGALGE  
 ADVIECLSLEKL VNEHKCLCQIEPCSAISGYGKKIDKSIKKGLYLLHVIARDFDALNERIQKETTEQRA  
 LEEQEKQERAERVRKLRERKQNEQEAELDGTSGLAELDPEPTNPFQPIASVIIENEGKLEREKKNQKM  
 EKDSGDGCHLKHKMEHEQIETQGQVNHNGQKNNEFGLVENYKEAL TQQLKNEDETDRPSLESANGKKTKK  
 LRMKRNHRVEPLNIDDCAPE SPTPPPPPPVWGTPKVTRL PKLEPLGETHHNDFYRKPLPPLAVPQRPN  
 SDAHVIS

**TR**TRPLEQKLISEEDLAANDILDYKDDDDKV

**Chromatograms:**

[https://cdn.origene.com/chromatograms/mk6504\\_b12.zip](https://cdn.origene.com/chromatograms/mk6504_b12.zip)

**Restriction Sites:**

SgfI-MluI

**Cloning Scheme:**


**ACCN:** NM\_182896

**ORF Size:** 1284 bp

**OTI Disclaimer:** The molecular sequence of this clone aligns with the gene accession number as a point of reference only. However, individual transcript sequences of the same gene can differ through naturally occurring variations (e.g. polymorphisms), each with its own valid existence. This clone is substantially in agreement with the reference, but a complete review of all prevailing variants is recommended prior to use. [More info](#)

**OTI Annotation:** This clone was engineered to express the complete ORF with an expression tag. Expression varies depending on the nature of the gene.

**Components:** The ORF clone is ion-exchange column purified and shipped in a 2D barcoded Matrix tube containing 10ug of transfection-ready, dried plasmid DNA (reconstitute with 100 ul of water).

**Reconstitution Method:**

1. Centrifuge at 5,000xg for 5min.
2. Carefully open the tube and add 100ul of sterile water to dissolve the DNA.
3. Close the tube and incubate for 10 minutes at room temperature.
4. Briefly vortex the tube and then do a quick spin (less than 5000xg) to concentrate the liquid at the bottom.
5. Store the suspended plasmid at -20°C. The DNA is stable for at least one year from date of shipping when stored at -20°C.

**Note:** Plasmids are not sterile. For experiments where strict sterility is required, filtration with 0.22um filter is required.

**RefSeq:** [NM\\_182896.3](#)

**RefSeq Size:** 3451 bp

**RefSeq ORF:** 1287 bp

**Locus ID:** 200894

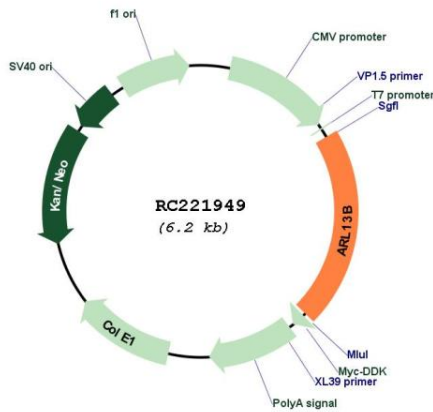
UniProt ID: [Q3SXY8](#)

Cytogenetics: 3q11.1-q11.2

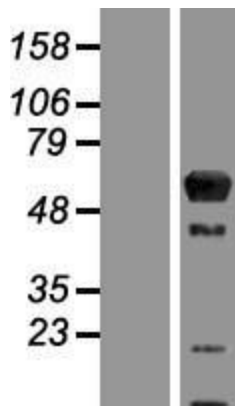
MW: 48.5 kDa

**Gene Summary:** This gene encodes a member of the ADP-ribosylation factor-like family. The encoded protein is a small GTPase that contains both N-terminal and C-terminal guanine nucleotide-binding motifs. This protein is localized in the cilia and plays a role in cilia formation and in maintenance of cilia. Mutations in this gene are the cause of Joubert syndrome 8. Alternate splicing results in multiple transcript variants. [provided by RefSeq, Mar 2010]

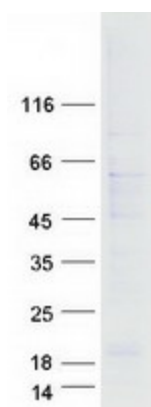
**Product images:**



Circular map for RC221949



Western blot validation of overexpression lysate (Cat# [LY405389]) using anti-DDK antibody (Cat# [TA50011-100]). Left: Cell lysates from untransfected HEK293T cells; Right: Cell lysates from HEK293T cells transfected with RC221949 using transfection reagent MegaTran 2.0 (Cat# [TT210002]).



Coomassie blue staining of purified ARL13B protein (Cat# [TP321949]). The protein was produced from HEK293T cells transfected with ARL13B cDNA clone (Cat# RC221949) using MegaTran 2.0 (Cat# [TT210002]).