

## Product datasheet for RC221947

### CPLX2 (NM\_001008220) Human Tagged ORF Clone

#### Product data:

**Product Type:** Expression Plasmids  
**Product Name:** CPLX2 (NM\_001008220) Human Tagged ORF Clone  
**Tag:** Myc-DDK  
**Symbol:** CPLX2  
**Synonyms:** 921-L; CPX-2; CPX2; Hfb1  
**Mammalian Cell Selection:** Neomycin  
**Vector:** pCMV6-Entry (PS100001)  
**E. coli Selection:** Kanamycin (25 ug/mL)  
**ORF Nucleotide Sequence:** >RC221947 ORF sequence  
Red=Cloning site Blue=ORF Green=Tags(s)

TTTTGTAATACGACTCACTATAGGGCGCCGGGAATTCGTCGACTGGATCCGGTACCGAGGAGATCTGCC  
GCC**CGGATCGCC**

ATGGACTTCGTCATGAAGCAGGCCCTTGGAGGGGCCACAAAGGACATGGGAAGATGCTGGGGGAGAGG  
AGGAGAAGGACCCCGACGCGCAGAAAAAGGAGGAGGAGCGGCAGGAGGCGCTGCGGCAGCAGGAGGAGGA  
GCGTAAGCCAAGCACGCGCGCATGGAGGCGGAGCGGGAGAAGGTCCGGCAGCAGATCCGAGATAAGTAT  
GGGCTGAAGAAGAAGGAGGAGAAGGAAGCAGAGGAGAAAGCAGCCCTGGAGCAGCCCTGCGAGGGGAGCC  
TGACCCGGCCCAAGAAGGCCATCCCTGCGGGCTGCGGGGACGAGGAGGAGGAGGAAGAGGAGAGCATCCT  
GGACACGGTGCTCAAATACCTGCCCGGGCCGCTGCAGGACATGTTCAAGAAG

**ACGCGT**ACGCGGCCGCTCGAGCAGAACTCATCTCAGAAGAGGATCTGGCAGCAAATGATATCCTGGATT  
ACAAGGATGACGACGATAAGGTTTAA

**Protein Sequence:** >RC221947 protein sequence  
Red=Cloning site Green=Tags(s)  
MDFVMKQALGGATKDMGKMLGGEEEKDPDAQKKEEERQEALRQQEEERKAKHARMEAREKVRQQIRDKY  
GLKKKEEKEAEEKAALQPCESLTPKKAIPAGCGDEEEEEESILDVTLKYLPGPLQDMFKK

**TR**TRPLEQKLISEEDLAANDILDYKDDDDKV

**Chromatograms:** [https://cdn.origene.com/chromatograms/mk6382\\_g09.zip](https://cdn.origene.com/chromatograms/mk6382_g09.zip)

**Restriction Sites:** SgfI-MluI



[View online »](#)



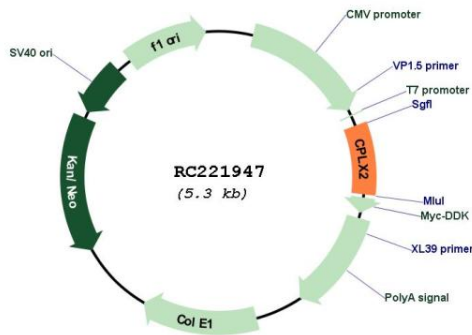
**Cytogenetics:** 5q35.2

**Protein Families:** Druggable Genome

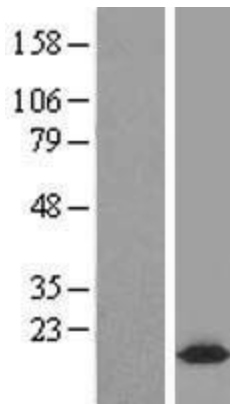
**MW:** 15.4 kDa

**Gene Summary:** Proteins encoded by the complexin/synaphin gene family are cytosolic proteins that function in synaptic vesicle exocytosis. These proteins bind syntaxin, part of the SNAP receptor. The protein product of this gene binds to the SNAP receptor complex and disrupts it, allowing transmitter release. Two transcript variants encoding the same protein have been found for this gene. [provided by RefSeq, Jul 2008]

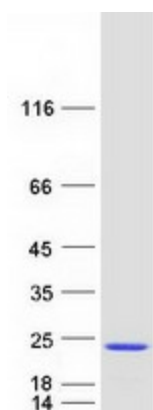
**Product images:**



Circular map for RC221947



Western blot validation of overexpression lysate (Cat# [LY423397]) using anti-DDK antibody (Cat# [TA50011-100]). Left: Cell lysates from untransfected HEK293T cells; Right: Cell lysates from HEK293T cells transfected with RC221947 using transfection reagent MegaTran 2.0 (Cat# [TT210002]).



Coomassie blue staining of purified CPLX2 protein (Cat# [TP321947]). The protein was produced from HEK293T cells transfected with CPLX2 cDNA clone (Cat# RC221947) using MegaTran 2.0 (Cat# [TT210002]).