

Product datasheet for **RC221945**

BICD2 (NM_015250) Human Tagged ORF Clone

Product data:

Product Type:	Expression Plasmids
Product Name:	BICD2 (NM_015250) Human Tagged ORF Clone
Tag:	Myc-DDK
Symbol:	BICD2
Synonyms:	bA526D8.1; SMALED2; SMALED2A; SMALED2B
Mammalian Cell Selection:	Neomycin
Vector:	pCMV6-Entry (PS100001)
E. coli Selection:	Kanamycin (25 ug/mL)



[View online »](#)

ORF Nucleotide Sequence:

>RC221945 representing NM_015250
 Red=Cloning site Blue=ORF Green=Tags(s)

TTTTGTAATACGACTCACTATAGGGCGGCCGGAATTCGTCGACTGGATCCGGTACCGAGGAGATCTGCC
 GCC**CGGATCGCC**

ATGTCGGCGCCGTCGGAGGAGGAGTACGCGCGGCTGGTATGGAGGCGCAGCCGGAGTGGCTGCGCG
 CCGAGGTGAAGCGGCTGTCCACGAGCTGGCCGAGACCAGCGTGAGAAGATCCAGGCGGCCGAGTACGG
 GCTGGCGGTGCTCGAGGAGAAGCACAGCTCAAGCTGCAGTTCGAGGAGCTCGAGGTGGACTATGAGGCT
 ATCCGAGCGAGATGGAGCAGCTCAAGGAGGCCTTTGGACAAGCACACAAAACCACAAGAAGTGGCTG
 CTGACGGAGAGAGCCGGGAGGAGCCTGATCCAGGAGTCGGCCTCAAGGAGCAGTACTACGTGCGGAA
 GGTGCTAGAGCTGCAGACGGAGCTGAAGCAGTTGCGCAATGTCTCACCAACACGCGAGTCGGAGAATGAG
 CGCCTGGCCTCTGTGGCCAGGAGCTGAAGGAGATCAACCAGAATGTGGAGATCCAGCGTGGCCGCTGC
 GGGATGACATCAAGGAGTACAAATTCGGGAAGCTCGTCTGCTGCAGGACTACTCGGAATGGAGGAGGA
 GAACATCAGCCTGCAGAAGCAAGTGTCTGTGCTCAGACAGAACCAGGTGGAGTTTGGAGGCTCAAGCAT
 GAGATCAAGCGTCTGGAGGAGGAGACCGAGTACCTCAACAGCCAGCTGGAGGATGCCATCCGCCTCAAGG
 AGATCTCAGAGCGGCAGCTGGAGGAGGCGCTGGAGACCCTGAAGACGGAGCGCAACAGAAGAACAGCCT
 GCGCAAGGAGCTGTCACACTACATGAGCATCAATGACTCCTTCTACACCAGCCACCTGCATGTCTCGCTG
 GATGGCCTCAAGTTCAGTGACGATGCTGCCGAGCCCAACAACGATGCCGAGGCCCTGGTCAATGGCTTTG
 AGCACGGCGGCCCTGGCCAAGCTGCCACTGGACAACAAGACCTCCACGCCCAAGAAGGAGGGCCCTCGCACC
 GCCCTCCCCAGCCTCGTCTCCGACCTACTCAGTGAGCTCAACATCTCTGAGATCCAGAAGCTGAAGCAG
 CAGCTGATGCAGATGGAGCGGAAAAGGCGGGCCTGCTGGCAACGCTGCAGGACACACAGAAGCAGCTGG
 AGCACAGCGGGGCTCCCTGTGAGAACAGCAGGAGAAGTGAACCGCCTCACAGAGAATCTGAGTGCCT
 GCGGCGCCTGCAGGCCAGCAAGGAGCGGACAGACGCCCTGGACAACGAGAAGGACCGTGACAGCCATGAG
 GATGGGGACTACTACGAGGTGGACATCAACGGGCTGAGATCTTGGCCTGCAAGTACCATGTGGCTGTGG
 CTGAGGCTGGCGAGCTCCGCGAGCAGCTCAAGGCACTGCGCAGCACGACGAGGCTCGTGGGCCAGCA
 CGCCGAGGAGAAGGGCCGCTATGAGGCTGAGGGCCAGGCACTCACGGAGAAGGTCTCCCTGCTAGAGAAG
 GCCAGCCGCCAGGACCGGAGCTGCTGGCCGGCTGGAGAAGGAGCTAAAGAAGGTGAGCGACGTCGCCG
 GCGAGACACAGGGCAGCCTGAGTGTGGCCAGGATGAGCTGGTGACCTTCAAGTGGAGGCTGGCCAATCT
 CTACCACCAGTGTGCATGTGCAACAATGAGACACCAACCGTGTGATGCTGGACTACTACCGGAGGGC
 CAGGGCGGGCCGCGCACCAAGTCCCAGGGGCGCACCAAGCCCGAGGCGGTGGCCGGCGCTCACCCA
 TCCTCCTACCAAGGGGCTGCTGGCTCCTGAGGCGGGCCGAGCAGATGGTGGGACGGGGACAGCAGCCC
 CTGCGCTGGCTCCTCACTGCCATCACCCCTGAGTGACCCAGCCGGGAGCCCATGAACATCTACAACCTG
 ATCGCTATCATCCGTGACCAGATCAAGCACCTGCAGGCAGCCGTGGACCGCACCAAGGAGCTGTCACGCC
 AGCGCATTGCCTCTCAGGAGCTGGGCCCGCCGTGGACAAGGACAAGGAAGCGCTTATGGAGGAGATCCT
 CAAGCTGAAGTCGCTGCTCAGCACCAAGCGGGAGCAGATCACCACGCTGCGCACTGTGCTCAAGGCCAAC
 AAGCAGACGGCCGAGGTGGCCCTTGCCAACCTGAAGAGCAAGTATGAGAATGAGAAGGCCATGGTTACCG
 AGACCATGATGAAGCTGCGCAATGAGCTCAAGGCCCTCAAGGAGGACGACGCCACCTTCTCCTCGCTGCG
 TGCTATGTTTGCACACAGGTGTGACGAGTACATTACACAGCTGGATGAGATGCAGCGCAGCTGGCGGCT
 GCTGAGGACGAGAAGAAGACGCTGAACCTGCTGCTGCGCATGGCCATCCAGCAGAAGCTGGCGCTGACCC
 AGCGGCTGGAGCTGCTCAGCTGGACCATGAGCAGACCCGGCGTGGCCGTGCCAAAGCCGCCCGAAGAC
 CAAGCCAGCCACACCGAGCCTG

AG**CGGACCG**ACGCGTACGCGGCCGCTCGAGCAGAACTCATCTCAGAAGAGGATCTGGCAGCAAATGATATCC
 TGGATTACAAGGATGACGACGATAAGGTTTAA

Protein Sequence: >RC221945 representing NM_015250
Red=Cloning site Green=Tags(s)

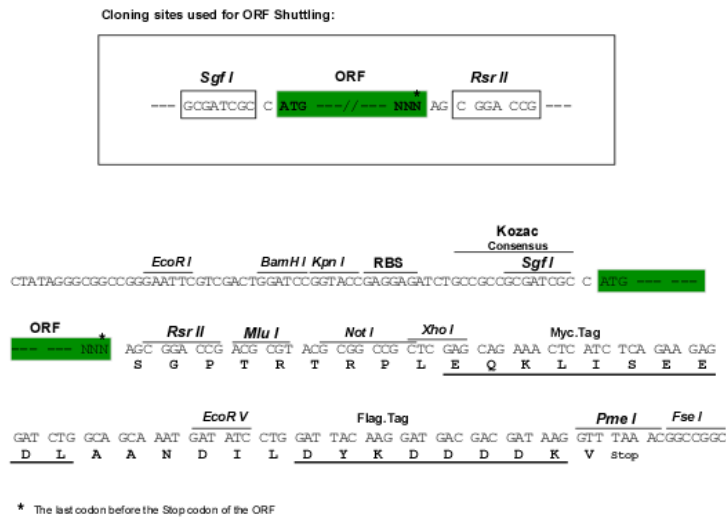
MSAPSEEEYARLVMEAPQEWLRAEVKRLSHELAEATTREKIQAAEYGLAVLEEKHQLKLQFEELEVDYEA
IRSEMEQLKEAFGQAHTNHKKVAADGESREESLIQESASKEQYYVRKVLELQTELKQLRNVLNTQSENE
RLASVAQELKEINQNVEIQRGRLRDDIKEYKFREARLLQDYSELEENISLQKQVSVLRQNQVFEGLKH
EIKRLEEEETEYLNQLEDAIRLKEISERQLEEALETLKTEREQKNSLRKELSHYMSINDSFYTSHLHVSL
DGLKFSDDAAEPNDAEALVNGFEHGGLAKLPLDNKTSTPKKEGLAPPSPSLVSDLLSELNISEIQKQKQ
QLMQMEREKAGLLATLQDTQKQLEHTRGSLSEQQEKVTRLTENLSALRRLQASKERQTALDNEKDRDSHE
DGDYVEVDINGPEILACKYHVAVAEAGELREQLKALRSTHEAREAQAHEEKGRYEAEQALTEKVSLLK
ASRQDRELLARLEKELKKVSDVAGETQGSLSVAQDELVTFSEELANLYHHVCMCNNETPNRVMLDYYREG
QGGAGRTSPGGRTSPEARGRRSPILLPKGLLAPEAGRADGGTGDSSSPGSSLPSPSDPRREPMNIYNL
IAIIRDQIKHLQAAVDRTTEL SRQRIASQELGPAVDKDKEALMEEILKLSLLSTKREQITTLRTVLKAN
KQTAEVALANLKSKEYENKAMVTE TMMKLRNELKALKEDAATFSSLRAMFATRCDEYITQLDEMQRQLAA
AEDEKKTLSLLRMAIQKLLAL TQRLELLELDHEQTRRGRAKAAPKTKPATPSL

SGP TRRRLEQKLISEEDLAANDILDYKDDDDKV

Chromatograms: https://cdn.origene.com/chromatograms/mk8039_d12.zip

Restriction Sites: Sgfl-RsrII

Cloning Scheme:



ACCN: NM_015250

ORF Size: 2472 bp

OTI Disclaimer: The molecular sequence of this clone aligns with the gene accession number as a point of reference only. However, individual transcript sequences of the same gene can differ through naturally occurring variations (e.g. polymorphisms), each with its own valid existence. This clone is substantially in agreement with the reference, but a complete review of all prevailing variants is recommended prior to use. [More info](#)

OTI Annotation: This clone was engineered to express the complete ORF with an expression tag. Expression varies depending on the nature of the gene.

Components: The ORF clone is ion-exchange column purified and shipped in a 2D barcoded Matrix tube containing 10ug of transfection-ready, dried plasmid DNA (reconstitute with 100 ul of water).

Reconstitution Method:

1. Centrifuge at 5,000xg for 5min.
2. Carefully open the tube and add 100ul of sterile water to dissolve the DNA.
3. Close the tube and incubate for 10 minutes at room temperature.
4. Briefly vortex the tube and then do a quick spin (less than 5000xg) to concentrate the liquid at the bottom.
5. Store the suspended plasmid at -20°C. The DNA is stable for at least one year from date of shipping when stored at -20°C.

RefSeq: [NM_015250.4](#)

RefSeq Size: 4625 bp

RefSeq ORF: 2475 bp

Locus ID: 23299

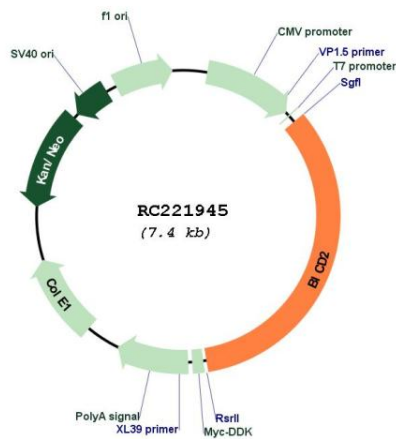
UniProt ID: [Q8TD16](#)

Cytogenetics: 9q22.31

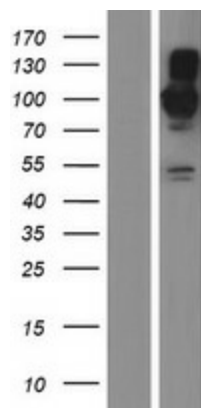
MW: 93.4 kDa

Gene Summary: This gene is one of two human homologs of *Drosophila bicaudal-D* and a member of the Bicoid family. It has been implicated in dynein-mediated, minus end-directed motility along microtubules. It has also been reported to be a phosphorylation target of NIMA related kinase 8. Two alternative splice variants have been described. [provided by RefSeq, Jul 2008]

Product images:



Circular map for RC221945



Western blot validation of overexpression lysate (Cat# [LY414677]) using anti-DDK antibody (Cat# [TA50011-100]). Left: Cell lysates from untransfected HEK293T cells; Right: Cell lysates from HEK293T cells transfected with RC221945 using transfection reagent MegaTran 2.0 (Cat# [TT210002]).