

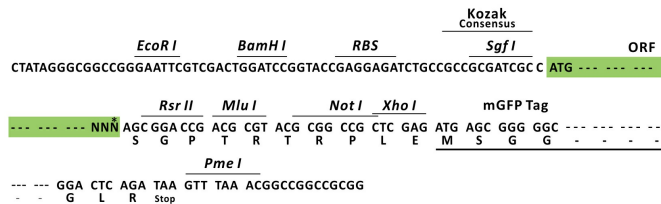
Product datasheet for RC221938L2

PTPRS (NM_130855) Human Tagged Lenti ORF Clone

Product data:

Product Type: Expression Plasmids
 Product Name: PTPRS (NM_130855) Human Tagged Lenti ORF Clone
 Tag: mGFP
 Symbol: PTPRS
 Synonyms: PTPSIGMA; R-PTP-S; R-PTP-sigma
 Mammalian Cell Selection: None
 Vector: pLenti-C-mGFP (PS100071)
 E. coli Selection: Chloramphenicol (34 ug/mL)
 ORF Nucleotide Sequence: The ORF insert of this clone is exactly the same as(RC221938).
 Restriction Sites: SgfI-RsrII
 Cloning Scheme:

Cloning sites used for ORF Shuttling:



* The last codon before the Stop codon of the ORF.

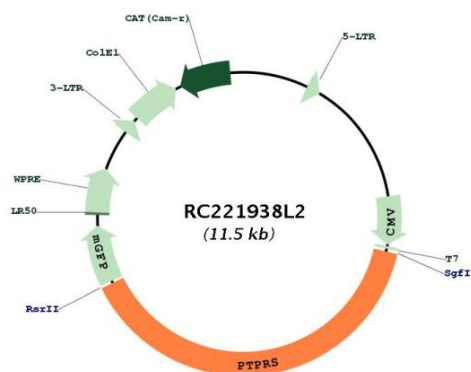
ACCN: NM_130855
 ORF Size: 4515 bp



[View online »](#)

OTI Disclaimer:	The molecular sequence of this clone aligns with the gene accession number as a point of reference only. However, individual transcript sequences of the same gene can differ through naturally occurring variations (e.g. polymorphisms), each with its own valid existence. This clone is substantially in agreement with the reference, but a complete review of all prevailing variants is recommended prior to use. More info
OTI Annotation:	This clone was engineered to express the complete ORF with an expression tag. Expression varies depending on the nature of the gene.
Components:	The ORF clone is ion-exchange column purified and shipped in a 2D barcoded Matrix tube containing 10ug of transfection-ready, dried plasmid DNA (reconstitute with 100 ul of water).
Reconstitution Method:	<ol style="list-style-type: none">1. Centrifuge at 5,000xg for 5min.2. Carefully open the tube and add 100ul of sterile water to dissolve the DNA.3. Close the tube and incubate for 10 minutes at room temperature.4. Briefly vortex the tube and then do a quick spin (less than 5000xg) to concentrate the liquid at the bottom.5. Store the suspended plasmid at -20°C. The DNA is stable for at least one year from date of shipping when stored at -20°C.
RefSeq:	NM_130855.1
RefSeq Size:	5171 bp
RefSeq ORF:	4518 bp
Locus ID:	5802
UniProt ID:	Q13332
Cytogenetics:	19p13.3
Protein Families:	Druggable Genome, Phosphatase, Transmembrane
MW:	166.1 kDa
Gene Summary:	The protein encoded by this gene is a member of the protein tyrosine phosphatase (PTP) family. PTPs are known to be signaling molecules that regulate a variety of cellular processes including cell growth, differentiation, mitotic cycle, and oncogenic transformation. This PTP contains an extracellular region, a single transmembrane segment and two tandem intracytoplasmic catalytic domains, and thus represents a receptor-type PTP. The extracellular region of this protein is composed of multiple Ig-like and fibronectin type III-like domains. Studies of the similar gene in mice suggested that this PTP may be involved in cell-cell interaction, primary axonogenesis, and axon guidance during embryogenesis. This PTP has been also implicated in the molecular control of adult nerve repair. Four alternatively spliced transcript variants, which encode distinct proteins, have been reported. [provided by RefSeq, Jul 2008]

Product images:



Circular map for RC221938L2