

## Product datasheet for RC221937

### ALKBH6 (NM\_198867) Human Tagged ORF Clone

#### Product data:

**Product Type:** Expression Plasmids  
**Product Name:** ALKBH6 (NM\_198867) Human Tagged ORF Clone  
**Tag:** Myc-DDK  
**Symbol:** ALKBH6  
**Synonyms:** ABH6  
**Mammalian Cell Selection:** Neomycin  
**Vector:** pCMV6-Entry (PS100001)  
**E. coli Selection:** Kanamycin (25 ug/mL)  
**ORF Nucleotide Sequence:** >RC221937 representing NM\_198867  
Red=Cloning site Blue=ORF Green=Tags(s)

TTTTGTAATACGACTCACTATAGGGCGCCGGGAATTCGTCGACTGGATCCGGTACCGAGGAGATCTGCC  
GCC**CGATCGCC**

ATGGCTGGGAGGGGGATGGGGATGTTGAATTTGGAAATTGGAGGGGACGCTGGTGGACGGATTGGGTGCA  
AGGAGTTGGTGTGATGGAGGAGCAGGACGCCAGAGTCCCAGCCCTGGAACCGTTCAGAGTGGAGCAGGC  
ACCACCTGTAATCTACTATGTCCCTGACTTCATCTCCAAAGAAGAGGAGGAGTATTTGCTTCGACAGGTT  
TTTAATGCCCAAAGCCAAAGTGGACCCAGCTCTCTGGGAGAAAGTTACAGAAGTGGGGTGGCTTCCCT  
ATCCCGAGGGATGGTTCCTGAGCGGCTGCCCCATGGCTCCAGCGCTACGTGGACAAAGTGTCAAACCT  
CAGCCTCTTTGGAGGCCCTCCAGCTAACCATGTCTCGTGAACCAAGTATCTGCCTGGGGAGGGCATCATG  
CACCATCAGCCTGGGCTCCACACCGTGTGGACTTCTACGAGCCGCGGGCCAGAGGACGA

**ACGCGT**ACGCGGCCGCTCGAGCAGAACTCATCTCAGAAGAGGATCTGGCAGCAAATGATATCCTGGATT  
ACAAGGATGACGACGATAAGGTTTAA

**Protein Sequence:** >RC221937 representing NM\_198867  
Red=Cloning site Green=Tags(s)  
MAGRGMGLNLEIGGDAGGRIGCKELVLMEEQDARVPALEPFRVEQAPPVIYYVPDFISKEEEEEYLLRQV  
FNAPKPKWTQLSGRKLQNWGGLPHPRGMVPERLPPWLQRYVDKVSNLSLFGGLPANHVLVNQYLPGEIGIM  
HHQPGLPHRAGLLRAAAARGR

**TR**TRPLEQK**L**ISEEDLAANDILDYKDDDDKV

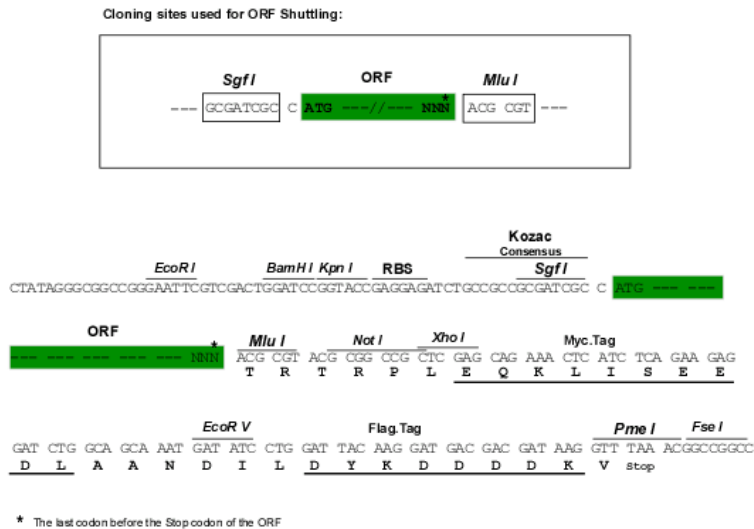
**Chromatograms:** [https://cdn.origene.com/chromatograms/ja1253\\_g07.zip](https://cdn.origene.com/chromatograms/ja1253_g07.zip)



[View online »](#)

Restriction Sites: SgfI-MluI

Cloning Scheme:



ACCN: NM\_198867

ORF Size: 483 bp

OTI Disclaimer: The molecular sequence of this clone aligns with the gene accession number as a point of reference only. However, individual transcript sequences of the same gene can differ through naturally occurring variations (e.g. polymorphisms), each with its own valid existence. This clone is substantially in agreement with the reference, but a complete review of all prevailing variants is recommended prior to use. [More info](#)

OTI Annotation: This clone was engineered to express the complete ORF with an expression tag. Expression varies depending on the nature of the gene.

Components: The ORF clone is ion-exchange column purified and shipped in a 2D barcoded Matrix tube containing 10ug of transfection-ready, dried plasmid DNA (reconstitute with 100 ul of water).

Reconstitution Method:

1. Centrifuge at 5,000xg for 5min.
2. Carefully open the tube and add 100ul of sterile water to dissolve the DNA.
3. Close the tube and incubate for 10 minutes at room temperature.
4. Briefly vortex the tube and then do a quick spin (less than 5000xg) to concentrate the liquid at the bottom.
5. Store the suspended plasmid at -20°C. The DNA is stable for at least one year from date of shipping when stored at -20°C.

RefSeq: [NM\\_198867.1](#), [NP\\_942567.1](#)

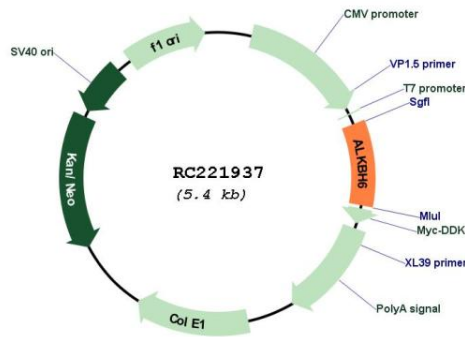
RefSeq Size: 956 bp

RefSeq ORF: 486 bp

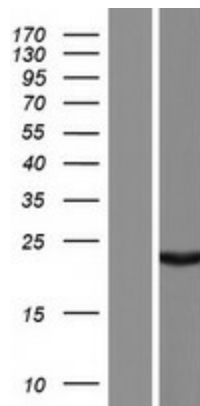
Locus ID: 84964

**Cytogenetics:** 19q13.12  
**MW:** 17.8 kDa  
**Gene Summary:** Probable dioxygenase that requires molecular oxygen, alpha-ketoglutarate and iron. [UniProtKB/Swiss-Prot Function]

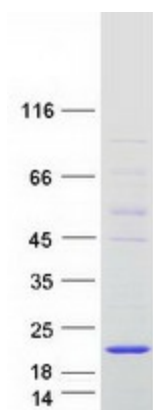
**Product images:**



Circular map for RC221937



Western blot validation of overexpression lysate (Cat# [LY404763]) using anti-DDK antibody (Cat# [TA50011-100]). Left: Cell lysates from untransfected HEK293T cells; Right: Cell lysates from HEK293T cells transfected with RC221937 using transfection reagent MegaTran 2.0 (Cat# [TT210002]).



Coomassie blue staining of purified ALKBH6 protein (Cat# [TP321937]). The protein was produced from HEK293T cells transfected with ALKBH6 cDNA clone (Cat# RC221937) using MegaTran 2.0 (Cat# [TT210002]).