

Product datasheet for **RC221935**

MBD3L2 (NM_144614) Human Tagged ORF Clone

Product data:

Product Type: Expression Plasmids
Product Name: MBD3L2 (NM_144614) Human Tagged ORF Clone
Tag: Myc-DDK
Symbol: MBD3L2
Mammalian Cell Selection: Neomycin
Vector: pCMV6-Entry (PS100001)
E. coli Selection: Kanamycin (25 ug/mL)
ORF Nucleotide Sequence: >RC221935 representing NM_144614
Red=Cloning site Blue=ORF Green=Tags(s)

TTTTGTAATACGACTCACTATAGGGCGGCCGGAATTCGTCGACTGGATCCGGTACCGAGGAGATCTGCC
GCC**CGCATCGCC**

ATGGGAGAACCTGCGTTACCTCTTTTCCAAGCCTGCCTGTTCTGGGAAGCTCAAAGGAACATGATGC
CCTGGGCTTTACAGAAGAAACGAGAAATCCACATGGCCAAGGCCCATCGGAGACGAGCTGCGAGGTCTGC
TCTCCCCATGAGACTCACCAGCTGCATCTTCCGGAGGCCGGTGACAAGGATCAGGTCTCATCCTGACAAC
CAGGTGAGACGACGAGAAAGGGGACGAGCACCTGGAGAAGCCGACGCAACTCTGCGCTACCGGAGACTGC
AGGCCCTGCAGCCCTGCAGCAGCCAAGGAGAAGTTCAAGTCCACTGCATTGGAGAGCGTCTTAAGTAT
CCTTGCACCGGGGACGGCCGGTGAATCTCTGGACAGAGCTGGTGTGAGCGTGTGCGCAGCCCGCTTGAG
CCCACCCCTGGGCGTTTCCAGCTGTGGCAGGGGGCCAAACCCAGGAATGGGTTGTGAGTCCCACCGC
CCCTCTCTGGCCAATTGGTGACTCCTGCAGATATCCGGAGACAGGCCAGGAGGTGAAGAAAGCCAGGGA
GAGACTGGCCAAGGCCTTGCAGGCAGACAGGCTGGCCAGCGGGCAGAAATGCTGACAGGTGGA

ACGCGTACGCGGCCGCTCGAGCAGAAACTCATCTCAGAAGAGGATCTGGCAGCAAATGATATCCTGGATT
ACAAGGATGACGACGATAAGGTTTAA

Protein Sequence: >RC221935 representing NM_144614
Red=Cloning site Green=Tags(s)

MGEPAFTSFPSLPVLGKLKRNMPWALQKKREIHMakahrrraarsalpmrlTSCIFRRPVTRIRSHPDN
QVRRRGDEHLEKPPQLCAYRRLQALQPCSSQGEGLHLESVLSILAPGTAGESLDRAGAERVSRPLE
PTPGRFPAVAGGPTPGMGCQLPPPLSGQLVTPADIRRRQARRVKKARERLAKALQADRLARRAEMLTGG

TRTRPLEQKLISEEDLAANDILDYKDDDDKV

Chromatograms: https://cdn.origene.com/chromatograms/mk8039_e02.zip



View online »

Restriction Sites: SgfI-MluI

Cloning Scheme:



ACCN: NM_144614

ORF Size: 624 bp

OTI Disclaimer: The molecular sequence of this clone aligns with the gene accession number as a point of reference only. However, individual transcript sequences of the same gene can differ through naturally occurring variations (e.g. polymorphisms), each with its own valid existence. This clone is substantially in agreement with the reference, but a complete review of all prevailing variants is recommended prior to use. [More info](#)

OTI Annotation: This clone was engineered to express the complete ORF with an expression tag. Expression varies depending on the nature of the gene.

Components: The ORF clone is ion-exchange column purified and shipped in a 2D barcoded Matrix tube containing 10ug of transfection-ready, dried plasmid DNA (reconstitute with 100 ul of water).

Reconstitution Method:

1. Centrifuge at 5,000xg for 5min.
2. Carefully open the tube and add 100ul of sterile water to dissolve the DNA.
3. Close the tube and incubate for 10 minutes at room temperature.
4. Briefly vortex the tube and then do a quick spin (less than 5000xg) to concentrate the liquid at the bottom.
5. Store the suspended plasmid at -20°C. The DNA is stable for at least one year from date of shipping when stored at -20°C.

RefSeq: [NM_144614.3](#), [NP_653215.2](#)

RefSeq Size: 777 bp

RefSeq ORF: 627 bp

Locus ID: 125997

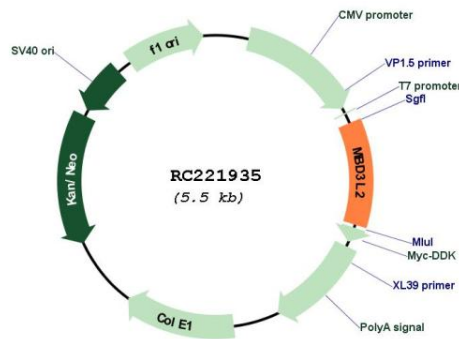
UniProt ID: [Q8NHZ7](#)

Cytogenetics: 19p13.2

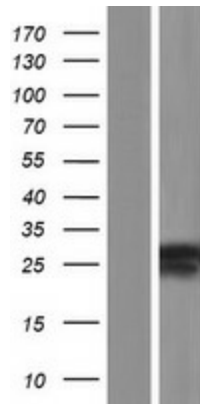
MW: 22.8 kDa

Gene Summary: This gene encodes a protein that is related to methyl-CpG-binding proteins but lacks the methyl-CpG binding domain. The protein has been found in germ cell tumors and some somatic tissues. [provided by RefSeq, Jul 2008]

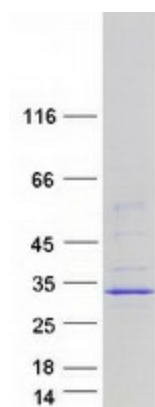
Product images:



Circular map for RC221935



Western blot validation of overexpression lysate (Cat# [LY408249]) using anti-DDK antibody (Cat# [TA50011-100]). Left: Cell lysates from untransfected HEK293T cells; Right: Cell lysates from HEK293T cells transfected with RC221935 using transfection reagent MegaTran 2.0 (Cat# [TT210002]).



Coomassie blue staining of purified MBD3L2 protein (Cat# [TP321935]). The protein was produced from HEK293T cells transfected with MBD3L2 cDNA clone (Cat# RC221935) using MegaTran 2.0 (Cat# [TT210002]).