

Product datasheet for RC221933

TBX6 (NM_080758) Human Tagged ORF Clone

Product data:

Product Type:	Expression Plasmids
Product Name:	TBX6 (NM_080758) Human Tagged ORF Clone
Tag:	Myc-DDK
Symbol:	TBX6
Synonyms:	DFNB67; OTTHUMP00000162995; T-box 6
Mammalian Cell Selection:	Neomycin
Vector:	pCMV6-Entry (PS100001)
E. coli Selection:	Kanamycin (25 ug/mL)
ORF Nucleotide Sequence:	>RC221933 representing NM_080758 Red=Cloning site Blue=ORF Green=Tags(s)

TTTTGTAATACGACTCACTATAGGGCGCCGGGAATTCGTCGACTGGATCCGGTACCGAGGAGATCTGCC
GCC**CGGATCGCC**

ATGTACCATCCACGAGAATTGTACCCGTCCTGGGGGCCGGCTACCGCCTGGGGCCGCCCAACCTGGGG
CCGACTCCAGCTTCCCACCCGCCCTAGCGGAGGGCTACCGCTACCCGAACTGGACACCCCTAAACTGGA
TTGCTTCTCTCCGGGATGGAGGCTGCTCCCCGACCCTGGCCGCGCACCCACCTCTGCCCTTCTGCC
CCTGCCATGGGCACTGAGCCGGCCCATCAGCTCCAGAGGCCCTCATTCCCTCCCGGGGTGAGCTGA
GCCTGGAGAACCAGGAGCTATGGAAGGAGTTCAGCTCTGTGGAAACAGAAATGATCATCACAAAGCTGG
GAGGCGCATGTTCCCTGCCTGCCGAGTGTGAGTACTGGCCTGGACCCGAGGCCCGCTACTTGTTCCT
CTGGATGTGATTCGGTGGATGGGGCTCGTACCGCTGGCAGGGCCGGCGCTGGGAGCCAGCGGAAGG
CAGAGCCCGCCTGCCTGACCGTGTCTACATTCACCCGACTCTCCTGCCACTGGTGCACATTGGATGCG
GCAGCCTGTGTCTTCCATCGTGTCAAGCTCACCAACAGCACGCTGGACCCACGGCCACCTGATCCTG
CACTCCATGCACAAGTACCAACCCGCATACACCTAGTTCGGGCAGCCAGCTCTGCAGCCAGCACTGGG
GGGCAATGGCCTCCTCCGCTTCCCCGAGACCACATTCATCTCCGTGACAGCCTACCAGAACCCACAGAT
CACACAAGTGAAGATTGCAGCCAATCCCTTTGCCAAAGGCTTCCGGGAGAACGGCAGAACTGTAAGAGG
TGGGAGTTGTTTCATTTCATTTGTTTCATGCATTCAACAAATGTTTAT

ACGCGTACGCGGCCGCTCGAGCAGAAACTCATCTCAGAAGAGGATCTGGCAGCAAATGATATCCTGGATT
ACAAGGATGACGACGATAAGGTTTAA



[View online »](#)

Protein Sequence: >RC221933 representing NM_080758
Red=Cloning site Green=Tags(s)

MYHPRELYPSLGAGYRLGPAQPGADSSFPPALAEGYRYPELDTPKLDCFLSGMEAAPRTLAAHPPLPLLP
 PAMGTEPAPSAPEALHSLPGVLSLENRELWKEFSSVGTEMIITKAGRRMFPACRVSVTGLDPEARYLFL
 LDVIPVDGARYRWQGRRWEPESGKAEPRLPDRVYIHPDSPATGAHWMRQPVSFHRVKLTNSTLDPHGHLIL
 HSMHKYQPRIHLVRAAQLCSQHWGGMASFRFPETTFISVTAYQNPQITQLKIAANPFAKGFRENGRNCKR
 WELFIHLFMHSTNVY

TRTRPLEQKLISEEDLAANDILDYKDDDDKV

Chromatograms: https://cdn.origene.com/chromatograms/mk8050_b12.zip

Restriction Sites: SgfI-MluI

Cloning Scheme:



ACCN: NM_080758

ORF Size: 885 bp

OTI Disclaimer: The molecular sequence of this clone aligns with the gene accession number as a point of reference only. However, individual transcript sequences of the same gene can differ through naturally occurring variations (e.g. polymorphisms), each with its own valid existence. This clone is substantially in agreement with the reference, but a complete review of all prevailing variants is recommended prior to use. [More info](#)

OTI Annotation: This clone was engineered to express the complete ORF with an expression tag. Expression varies depending on the nature of the gene.

Components: The ORF clone is ion-exchange column purified and shipped in a 2D barcoded Matrix tube containing 10ug of transfection-ready, dried plasmid DNA (reconstitute with 100 ul of water).

Reconstitution Method:

1. Centrifuge at 5,000xg for 5min.
2. Carefully open the tube and add 100ul of sterile water to dissolve the DNA.
3. Close the tube and incubate for 10 minutes at room temperature.
4. Briefly vortex the tube and then do a quick spin (less than 5000xg) to concentrate the liquid at the bottom.
5. Store the suspended plasmid at -20°C. The DNA is stable for at least one year from date of shipping when stored at -20°C.

RefSeq: [NM_080758.1](#), [NP_542936.1](#)

RefSeq Size: 2162 bp

RefSeq ORF: 887 bp

Locus ID: 6911

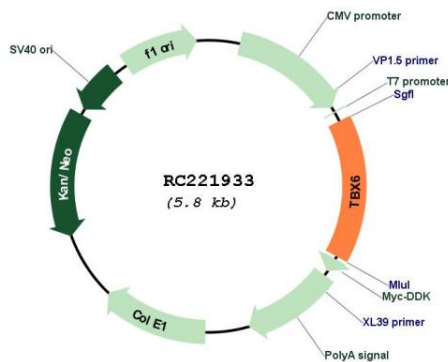
Cytogenetics: 16p11.2

Protein Families: Transcription Factors

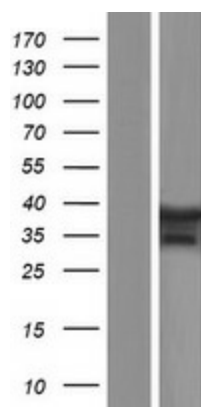
MW: 33 kDa

Gene Summary: This gene is a member of a phylogenetically conserved family of genes that share a common DNA-binding domain, the T-box. T-box genes encode transcription factors involved in the regulation of developmental processes. Knockout studies in mice indicate that this gene is important for specification of paraxial mesoderm structures. [provided by RefSeq, Aug 2008]

Product images:



Circular map for RC221933



Western blot validation of overexpression lysate (Cat# [LY409070]) using anti-DDK antibody (Cat# [TA50011-100]). Left: Cell lysates from untransfected HEK293T cells; Right: Cell lysates from HEK293T cells transfected with RC221933 using transfection reagent MegaTran 2.0 (Cat# [TT210002]).