

Product datasheet for **RC221932**

SLC8A3 (NM_058240) Human Tagged ORF Clone

Product data:

Product Type:	Expression Plasmids
Product Name:	SLC8A3 (NM_058240) Human Tagged ORF Clone
Tag:	Myc-DDK
Symbol:	SLC8A3
Synonyms:	NCX3
Mammalian Cell Selection:	Neomycin
Vector:	pCMV6-Entry (PS100001)
E. coli Selection:	Kanamycin (25 ug/mL)



[View online »](#)

ORF Nucleotide
Sequence:

>RC221932 representing NM_058240
 Red=Cloning site Blue=ORF Green=Tags(s)

TTTTGTAATACGACTCACTATAGGGCGGCCGGAATTCGTCGACTGGATCCGGTACCGAGGAGATCTGCC
 GCC**GCGATCGCC**

ATGGCGTGGTTAAGGTTGCAGCCTCTCACCTCTGCCTTCTCCATTTTGGGCTGGTTACCTTTGTGCTCT
 TCCTGAATGGTCTTCGAGCAGAGGCTGGTGGCTCAGGGGACGTGCCAAGCACAGGCAGAACAAATGAGTC
 CTGTTACAGGGTACATCGGACTGCAAGGAGGGTGTATCCTGCCAATCTGGTACCCGGAGAACCCTTCCTT
 GGGGACAAGATTGCCAGGGTCATTGTCTATTTTGTGGCCCTGATATACATGTTTCTTGGGGTGTCCATCA
 TTGCTGACCGCTTCATGGCATCTATTGAAGTCATCACCTCTCAAGAGAGGGAGGTGACAATTAAGAAACC
 CAATGGAGAAACCAGCACAACTACTTCGGGTCTGGAATGAACTGTCTCAACCTGACCTTATGGCC
 CTGGGTTCTCTGCTCCTGAGATACTCCTCTTTAATTGAGGTGTGGTCCATGGGTTTCTGCTGGT
 ATCTGGGACCTTCTACCATTGTAGGGAGTGCAGCCTTCAACATGTTTCATCATCTTGGCATCTGTGCTA
 CGTGATCCAGACGGAGAGACTCGAAGATCAAGCATCTACGAGTCTTTCATCACCGCTGCTTGGAGT
 ATCTTTGCCTACATCTGGCTCTATATGATTCTGGCAGTCTTCTCCCTGGTGTGGTCCAGGTTTGGGAA
 GCCTCCTCACTCTTCTTCTTTCCAGTGTGTCTTCTTGGCCTGGGTGGCAGATAAACGACTGCTCTT
 CTACAAATACATGCACAAAAAGTACCGCACAGACAAAACCGAGGAATTATCATAGAGACAGAGGGTGAC
 CACCCTAAGGGCATTGAGATGGATGGGAAAATGATGAATCCCATTTTCTAGATGGGAACCTGGTGGCCC
 TGGAAGGGAAGGAAGTGGATGAGTCCCGCAGAGAGATGATCCGGATTCTCAAGGATCTGAAGCAAAAACA
 CCCAGAGAAGGACTTAGATCAGCTGGTGGAGATGGCCAATTACTATGCTCTTTCCACCAACAGAAGAGC
 CGTGCCTTCTACCGTATCCAAGCCTCGATGATGACTGGTGCAGGCAATATCCTGAAGAAACATCGCAG
 CAGAACAAGCCAAGAAGGCCCTCCAGCATGAGCGAGGTGCACACCGATGAGCCTGAGGACTTTATTTCCAA
 GGTCTTCTTTGACCCATGTTCTTACCAGTGCCTGGAGAAGTGTGGGGCTGTACTCCTGACAGTGGTGAGG
 AAAGGGGGAGACATGTCAAAGACCATGTATGTGGACTACAAAACAGAGGATGGTTCTGCCAATGCAGGGG
 CTGACTATGAGTTCACAGAGGGCACGGTGGTCTGAAGCCAGGAGAGACCCAGAAGGAGTCTCCGTGGG
 CATAATTGATGACGACATTTTGGAGGAGTGAACACTTCTTTGTAAGGTTGAGCAATGTCCGCATAGAG
 GAGGAGCAGCCAGAGGAGGGGATGCCTCCAGCAATATTCAACAGTCTTCCCTGCCTCGGGCTGTCTAG
 CCTCCCTTGTGTGGCCACAGTTACCATCTTGGATGATGACCATGCAGGCATCTTCACTTTTGAATGTGA
 TACTATTCATGTCAGTGAGAGTATTGGTGTATGGAGGTCAAGGTTCTGCGGACATCAGGTGCCCGGGT
 ACAGTCATCGTCCCTTTAGGACAGTAGAAGGGACAGCCAAGGGTGGCGGTGAGGACTTTGAAGACACAT
 ATGGGGAGTTGGAATTAAGAATGATGAAACTGTGAAAACCATAAAGGGTTAAAATAGTAGATGAGGAGGA
 ATACGAAAAGCAAGAGAATTTCTTCATTGCCCTTGGTGAACCGAAATGGATGGAACGTGGAATATCAGCG
 CTCTGTATCTCCAGACAGGAAGCTGACTATGGAAGAAGAGGAGGCCAAGAGGATAGCAGAGATGGGAA
 AGCCAGTATTGGGTGAACACCCCAACTAGAAGTCATCATTGAAGAGTCTATGAGTTCAAGACTACGGT
 GGACAACTGATCAAGAAGACAAACCTGGCCTTGGTGTGGGGACCCATTCTGGAGGGACCAAGTTCATG
 GAGGCCATCACCGTCAGTGCAGCAGGGGATGAGGATGAGGATGAATCCGGGGAGGAGAGGCTGCCCTCT
 GCTTTGACTACGTCATGCACTTCTGACTGTCTTCTGGAAGGTGCTGTTTGCCTGTGTGCCCCCACAGA
 GTACTGCCACGGCTGGCCTGCTTCGCCGTCTCCATCCTCATCATTGGCATGCTCACCCCATCATTGGG
 GACCTGGCCTCGCACTTCGGCTGCACCATTGGTCTCAAAGATTACGTACAGCTGTTGTTTTCTGGCAT
 TTGGCACCTCTGTCCAGATACGTTTGGCAGAAAGCTGCTGCCCTCCAGGATGTATATGCAGACGCCCTC
 CATTGGCAACGTGACGGGACGCAACGCCGTCATGTTCTTCTGGGCATCGGCCTGGCCTGGTCCGTGGCC
 GCCATCTACTGGCTCTGCAGGGACAGGAGTCCACGTGTGCGCCGGCACACTGGCCTTCTCCGTCAACC
 TCTTACCATCTTTGCAATTTGTCTGCATCAGCGTGTCTTGTACCGAAGGCGGCCACCTGGGAGGGGA
 GCTTGGTGGCCCCGTGGCTGCAAGCTCGCCACAACATGGCTCTTTGTGAGCCTGTGGCTCCTCTACATA
 CTCTTTGCCACACTAGAGGCCTATTGCTACATCAAGGGTTC

ACGCGTACGCGGCCGCTCGAGCAGAAACTCATCTCAGAAGAGGATCTGGCAGCAAATGATATCCTGGATT
 ACAAGGATGACGACGATAAAGTTTAA

Protein Sequence: >RC221932 representing NM_058240
 Red=Cloning site Green=Tags(s)

MAWLRLQPLTSAFLHFGLVTFVFLNGLRAEAGGSGDVPSTGQNNESCSGSSDCKEGVILPIWYPENPSL
 GDKIARVIVYFVALIYMFLGVSIADRFMASIEVITSQEREVTIKKPNGETSTTTIRVWNETVSNLTLMA
 LGSSAPEILLSLIEVCGHGFIAAGDLGPSTIVGSAAFNMFIIIGICVYVIPDGETRRIKHLRVFFITAAWS
 IFAYIWL YMILAVFSPGVVQVWEGLLTLFFFPVCVLLAWVADKRLLFYKYMHKKYRTDKHRGIIETEGD
 HPKGIEMDGMMNSHFLDGNLVPLEGEKVEDESRREMIRILKDLKQKHPEKDLQLVEMANYALSHQOKS
 RAFYRIQATRMGTAGNILLKHAAEQAKKASSMSEVHTDEPEDFISKVFFDPCSQCLENCGAVLLTVVR
 KGGDMSTMYVDYKTEDGSANAGADYEFTEGTVVLKPGETQKEFSVGIIDDDIFEDEHFFVRLSNVRIE
 EEQPEEGMPPAIFNSLPLPRAVLASPCVATVTILDHAGIFTFECDTIHVSESIGVMEVKVLRVTSARG
 TVIVPFRVTEGTAKGGGEDFEDTYGELEFKNDET VKTIRVKIVDEEEYERQENFFIALGEPKWMERGISA
 LLLSPDRKLTMEEEEAKRIAEMGKPVLEHPKLEVIIEESYEFKTTVDKLIKTNLALVVGTHSWRDQFM
 EAITVSAAGDEDEDESGEERLPSCFDYVMHFLTFWVKVLFACVPPTEYCHGWACFAVSILIIIGMLTAIIG
 DLASHFGCTIGLKDSVTAVVFAFGTSPDPTFASKAAALQDVYADASIGNVTGSNAVNVFLGIGLAWSVA
 AIYWALQGQEFHVSAGTLAFSVTLFTIFAFVCISVLLYRRRPHLGGELGGPRGCKLATTWLVSLWLLYI
 LFATLEAYCYIKGF

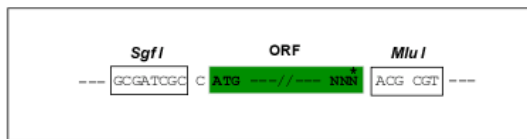
TRTRPLEQKLISEEDLAANDILDYKDDDDKV

Chromatograms: https://cdn.origene.com/chromatograms/mk6676_h02.zip

Restriction Sites: SgfI-MluI

Cloning Scheme:

Cloning sites used for ORF Shuttling:



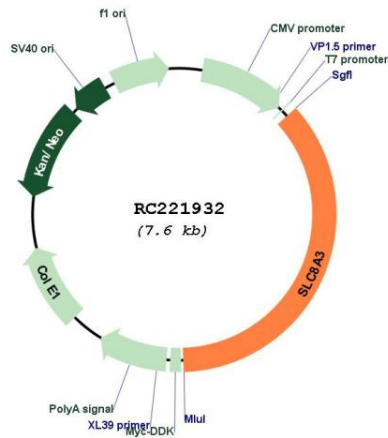
* The last codon before the Stop codon of the ORF

ACCN: NM_058240

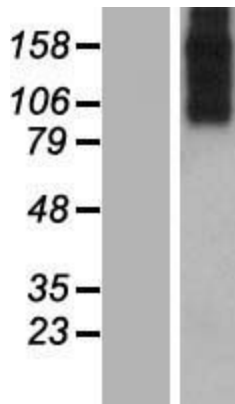
ORF Size: 2772 bp

OTI Disclaimer:	The molecular sequence of this clone aligns with the gene accession number as a point of reference only. However, individual transcript sequences of the same gene can differ through naturally occurring variations (e.g. polymorphisms), each with its own valid existence. This clone is substantially in agreement with the reference, but a complete review of all prevailing variants is recommended prior to use. More info
OTI Annotation:	This clone was engineered to express the complete ORF with an expression tag. Expression varies depending on the nature of the gene.
Components:	The ORF clone is ion-exchange column purified and shipped in a 2D barcoded Matrix tube containing 10ug of transfection-ready, dried plasmid DNA (reconstitute with 100 ul of water).
Reconstitution Method:	<ol style="list-style-type: none">1. Centrifuge at 5,000xg for 5min.2. Carefully open the tube and add 100ul of sterile water to dissolve the DNA.3. Close the tube and incubate for 10 minutes at room temperature.4. Briefly vortex the tube and then do a quick spin (less than 5000xg) to concentrate the liquid at the bottom.5. Store the suspended plasmid at -20°C. The DNA is stable for at least one year from date of shipping when stored at -20°C.
RefSeq:	NM_058240.4
RefSeq Size:	5259 bp
RefSeq ORF:	2775 bp
Locus ID:	6547
UniProt ID:	P57103
Cytogenetics:	14q24.2
Domains:	Calx-beta, Na_Ca_Ex
Protein Families:	Transmembrane
Protein Pathways:	Calcium signaling pathway
MW:	99.1 kDa
Gene Summary:	This gene encodes a member of the sodium/calcium exchanger integral membrane protein family. Na ⁺ /Ca ²⁺ exchange proteins are involved in maintaining Ca ²⁺ homeostasis in a wide variety of cell types. The protein is regulated by intracellular calcium ions and is found in both the plasma membrane and intracellular organellar membranes, where exchange of Na ⁺ for Ca ²⁺ occurs in an electrogenic manner. Alternative splicing has been observed for this gene and multiple variants have been described. [provided by RefSeq, Aug 2013]

Product images:



Circular map for RC221932



Western blot validation of overexpression lysate (Cat# [LY409219]) using anti-DDK antibody (Cat# [TA50011-100]). Left: Cell lysates from untransfected HEK293T cells; Right: Cell lysates from HEK293T cells transfected with RC221932 using transfection reagent MegaTran 2.0 (Cat# [TT210002]).