

## Product datasheet for RC221929

### CCXCR1 (XCR1) (NM\_001024644) Human Tagged ORF Clone

#### Product data:

Product Type:	Expression Plasmids
Product Name:	CCXCR1 (XCR1) (NM_001024644) Human Tagged ORF Clone
Tag:	Myc-DDK
Symbol:	CCXCR1
Synonyms:	CCXCR1; GPR5
Mammalian Cell Selection:	Neomycin
Vector:	pCMV6-Entry (PS100001)
E. coli Selection:	Kanamycin (25 ug/mL)
ORF Nucleotide Sequence:	>RC221929 representing NM_001024644 Red=Cloning site Blue=ORF Green=Tags(s)

TTTTGTAATACGACTCACTATAGGGCGGCCGGAATTCGTCGACTGGATCCGGTACCGAGGAGATCTGCC  
GCC**CGATCGC**C

ATGGAGTCCTCAGGCAACCCAGAGAGCACCACCTTTTTTACTATGACCTTCAGAGCCAGCCGTGTGAGA  
ACCAGGCCTGGGTCTTTGCTACCCTCGCCACCACTGTCTATACTGCCTGGTGTCTCCTCAGCCTAGT  
GGGCAACAGCCTGGTCTGTGGTCTGGTGAAGTATGAGAGCCTGGAGTCCCTACCAACATCTTCATC  
CTCAACCTGTGCCTCTCAGACCTGGTGTTCGCCTGCTTGTGCCTGTGTGGATCTCCCCATACCACTGGG  
GCTGGGTGCTGGGAGACTTCTCTGCAAACCTCAATATGATCTTCTCCATCAGCCTCTACAGCAGCAG  
CTTCTTCTGACCATCATGACCATCCACCCTACCTGTCGGTAGTGAGCCCTCTCCACCCTGCGCGTC  
CCCACCCTCCGCTGCCGGGTGCTGGTGACCATGGCTGTGTGGGTAGCCAGCATCCTGTCTCCATCCTCG  
ACACCATCTCCACAAGGTGCTTTCTTCGGGCTGTGATTATCCGAACTCACGTGGTACCTCACCTCCGT  
CTACCAGCACAACCTCTTCTTCTGCTGTCCCTGGGGATTATCCTGTTCTGCTACGTGGAGATCCTCAGG  
ACCCTGTTCCGCTCAGCTCCAAGCGGCCACCACCGTCAAGCTCATCTTCGCCATCGTGGTGGCT  
ACTTCTCAGTGGGGTCCCTACAACCTCACCTGTTTCTGCAGACGCTGTTTCGGACCCAGATCATCCG  
GAGCTGCGAGGCCAAACAGCAGCTAGAATACGCCCTGCTCATCTGCCGCAACCTCGCCTTCTCCCCTGC  
TGCTTTAACCCGGTGTCTATGTCTTCTGTTGGGGTCAAGTTCGCGACACACCTGAAACATGTTCTCCGGC  
AGTTCGGTCTGCGCGCTGCAGGCACCCAGCCAGCCTCGATCCCCACTCCCTGGTGCCTTCGCTA  
TGAGGGCGCCTCCTTCTAC

**ACGCGT**ACGCGGCCGCTCGAGCAGAACTCATCTCAGAAGAGGATCTGGCAGCAAATGATATCCTGGATT  
ACAAGGATGACGACGATAAGGTTTAA



[View online »](#)

**Protein Sequence:** >RC221929 representing NM\_001024644  
Red=Cloning site Green=Tags(s)

MESSGNPESTTFFYYDLQSQPCENQAWVFATLATTVLVYCLVFLSLVGNLSLVLWVLVKYESLESLESTNIFI  
 LNLCLSDLVFACLLPVWISPYHWGWLGDFLCKLLNMIFSISLYSSFFLTIMTIHRYLSVVSPLSTLRV  
 PTLRCRVLVTMAVWVASILSSILDTIFHKVLSGGDYSELTWYLT SVYQHNLFFLLSLGILFCYVEILR  
 TLFRRSRKRRHRTVKLIFAIVVAYFLSWGPYNFTLFLQTLFRTQIIRSCEAKQOLEYALLICRNLAFSHC  
 CFNPVLYVFGVKFRTHLKHVLRQFWFCRLQAPSPASIPHSPGAFAYEGASFY

TRTRPLEQKLISEEDLAANDILDYKDDDDKV

**Chromatograms:** [https://cdn.origene.com/chromatograms/mk6599\\_f02.zip](https://cdn.origene.com/chromatograms/mk6599_f02.zip)

**Restriction Sites:** SgfI-MluI

**Cloning Scheme:**

Cloning sites used for ORF Shutting:



\* The last codon before the Stop codon of the ORF

**ACCN:** NM\_001024644

**ORF Size:** 999 bp

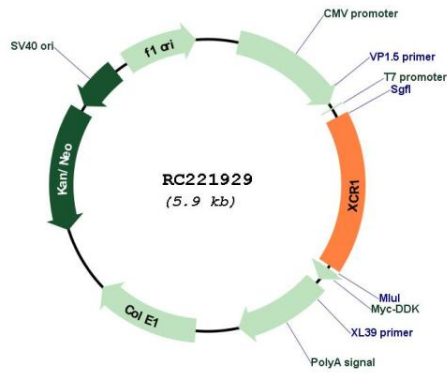
**OTI Disclaimer:** The molecular sequence of this clone aligns with the gene accession number as a point of reference only. However, individual transcript sequences of the same gene can differ through naturally occurring variations (e.g. polymorphisms), each with its own valid existence. This clone is substantially in agreement with the reference, but a complete review of all prevailing variants is recommended prior to use. [More info](#)

**OTI Annotation:** This clone was engineered to express the complete ORF with an expression tag. Expression varies depending on the nature of the gene.

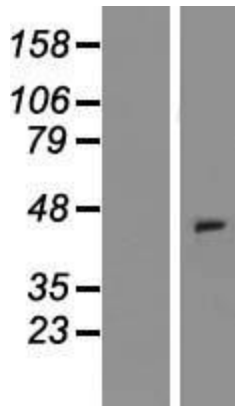
**Components:** The ORF clone is ion-exchange column purified and shipped in a 2D barcoded Matrix tube containing 10ug of transfection-ready, dried plasmid DNA (reconstitute with 100 ul of water).

<b>Reconstitution Method:</b>	<ol style="list-style-type: none"><li>1. Centrifuge at 5,000xg for 5min.</li><li>2. Carefully open the tube and add 100ul of sterile water to dissolve the DNA.</li><li>3. Close the tube and incubate for 10 minutes at room temperature.</li><li>4. Briefly vortex the tube and then do a quick spin (less than 5000xg) to concentrate the liquid at the bottom.</li><li>5. Store the suspended plasmid at -20°C. The DNA is stable for at least one year from date of shipping when stored at -20°C.</li></ol>
<b>RefSeq:</b>	<a href="#">NM_001024644.1</a> , <a href="#">NP_001019815.1</a>
<b>RefSeq Size:</b>	1251 bp
<b>RefSeq ORF:</b>	1002 bp
<b>Locus ID:</b>	2829
<b>UniProt ID:</b>	<a href="#">P46094</a>
<b>Cytogenetics:</b>	3p21.31
<b>Protein Families:</b>	Druggable Genome, GPCR, Transmembrane
<b>Protein Pathways:</b>	Chemokine signaling pathway, Cytokine-cytokine receptor interaction
<b>MW:</b>	38.3 kDa
<b>Gene Summary:</b>	<p>The protein encoded by this gene is a chemokine receptor belonging to the G protein-coupled receptor superfamily. The family members are characterized by the presence of 7 transmembrane domains and numerous conserved amino acids. This receptor is most closely related to RBS11 and the MIP1-alpha/RANTES receptor. It transduces a signal by increasing the intracellular calcium ions level. The viral macrophage inflammatory protein-II is an antagonist of this receptor and blocks signaling. Several alternatively spliced transcript variants encoding the same protein have been found for this gene. [provided by RefSeq, Apr 2020]</p>

Product images:



Circular map for RC221929



Western blot validation of overexpression lysate (Cat# [LY422523]) using anti-DDK antibody (Cat# [TA50011-100]). Left: Cell lysates from untransfected HEK293T cells; Right: Cell lysates from HEK293T cells transfected with RC221929 using transfection reagent MegaTran 2.0 (Cat# [TT210002]).