

Product datasheet for RC221926

PLEKHG5 (NM_001042664) Human Tagged ORF Clone

Product data:

Product Type: Expression Plasmids
Product Name: PLEKHG5 (NM_001042664) Human Tagged ORF Clone
Tag: Myc-DDK
Symbol: PLEKHG5
Synonyms: CMTRIC; DSMA4; GEF720; Syx; Tech
Mammalian Cell Selection: Neomycin
Vector: pCMV6-Entry (PS100001)
E. coli Selection: Kanamycin (25 ug/mL)
ORF Nucleotide Sequence: >RC221926 representing NM_001042664
 Red=Cloning site Blue=ORF Green=Tags(s)

TTTTGTAATACGACTCACTATAGGGCGGCCGGAATTCGTCGACTGGATCCGGTACCGAGGAGATCTGCC
 GCC**CGATCGCC**

ATGCATTATGATGGGCATGTCCGCTTCGACCTTCCCCACAAGGCTCTGTGCTGGCCCGAACGTGTCCA
 CCCGGTATGCCCGCCGCGCACCAGCCCCGAGTGGACTTGGAGGAGGAGGAGGAGAGCTCTGTGGA
 TGGCAAAGGGGACCGGAAGAGCACAGGCCTGAACTCTCCAAGAAGAAAGCAAGGAGGAGACACACGGAT
 GACCCAAGCAAGGAATGCTTCACTCTGAAATTTGACCTGAATGTGGACATTGAGACAGAGATCGTCCAG
 CCATGAAGAAGAAGTCACTGGGGAGGTGCTGCTGCCTGTATTTGAAAGGAAGGGCATTGCGCTGGGCAA
 AGTGGACATCTACCTGGACCAGTCCAACACACCCCTGTCCCTCACCTTCGAGGCCACAGGTTCCGGGGGA
 CACTACCTTCGTGTCAAAGCCCCAGCAAGCCTGGAGATGAGGGCAAGGTGGAGCAGGGCATGAAGGACT
 CCAAGTCCCTGAGTTTGGCGATTCTGCGGCCAGCTGGGACCGGGCCCCCGCCCTGGAGCGTGTGGACGC
 CCAGAGCCCGCGGAGAGCCTGGACATCTTGGCCCTGGCCGCGCCGCAAGAACATGTCGGAGTTCCTG
 GGGGAGGCGAGCATCCCCGGCAGGAGCCCCACGCCCTCCAGCTGCTCTTGCCAGCGGCAGCAGTG
 GCAGCACCAACTGGCGACAGCTGGAAGAACCGGGCGCCAGTCGCTTCAGCGGCTTTTTCAGCTCCGG
 CCCCAGCACAGCGCCTTTGGCCGGGAGGTAGACAAGATGGAGCAGCTGGAGGGCAAGCTGCACACCTAC
 AGCCTCTCGGGCTGCCAGGCTGCCCGGGGGCTGCGCTTCGACCATGACTCCTGGGAGGAGGAGTACG
 ATGAAGACGAGGATGAGGACAATGCCTGCCTGAGGCTGGAGGACAGCTGGCGGGAGCTCATTGATGGGCA
 TGAGAAGCTGACCCGGCGCAGTGCCACCAGCAGGAGGCGGTGTGGGAGCTGCTGCACACGAGGCTCC
 TACATCAGGAACTGCGGTGATCATCAACCTGTTCTGTGCTGCCTCCTGAACCTGCAAGAGTCAGGGC
 TGCTGTGTGAGGTGGAGGCGGAGCGCCTGTTTCAGCAACATCCCGGAGATCGCGCAGCTGCACCGCAGGCT
 GTGGGCTAGCGTGATGGCGCCGGTGTGGAGAAGGCGCGGCACGCGAGCGCTGCTACAGCCCGGGGAC
 TTCCTCAAAGGCTTCAAGATGTTTCGGCTCGCTTCAAGCCCTACATCCGCTACTGCATGGAGGAGGAGG
 GCTGCATGGAGTACATGCGCGCCTGCTGCGGACAACGACCTTTCGGGCCTACATCAGTGGGCGGA
 GAAGCACCCAGTGCCAGAGGCTGAAGCTGAGCGACATGCTGGCAAACCCACCAGCGGCTACCAAG



[View online >](#)

TACCCGCTGCTGCTCAAGTCGGTCTGAGGAAGACCGAGGAGCCGCGCGCCAAGGAGGCCGCTGCTCGCCA
 TGATCGGCTCCGTGGAGCGCTTCCACCACGTGAACCGCGTGCATGCGGCAGCGGCAGGAGCGGCAGCG
 GCTGGCGGCCGTGGTGGAGCCGATCGACGCCTACGAGGTGGTGGAAAGCAGCAGCGACGAAGTGGACAAG
 CTCCTGAAGGAATTTCTGCACCTGGACTTGACAGCGCCATCCCTGGCGCCTCCCCGGAGGAGACGCGGC
 AGCTGCTGCTGGAGGGGAGCCTGAGGATGAAGGAGGGGAAGGACAGCAAGATGGATGTGTACTGCTTCT
 TTCCACGGATCTGCTGTTGGTGACCAAAGCAGTGAAGAAGGCAGAGAGGACCAGGGTCATCAGGCCACCC
 CTGCTCGTGGACAAGATTGTGTGCCGGGAGCTACGGGACCCTGGGTCTTCTCCTTATCTACCTGAATG
 AGTTTACAGTGTGTAGGGCCCTACACGTTCCAGGCCAGTGGCCAGGCCTTGTGCCGTGGCTGGGTGGA
 CACCATTTACAATGCCGAGAACCAGCTGCAACAGCTGCGTGCACAGGAGCCCCCAGGCAGTCAGCAGCCC
 CTGAGAGCCTGGAAGAGGAGGAGGATGAGCAGGAGGAGGAAGAGGAGGAGGAGGAGGAGGAGGAGGAGG
 GCGAGGACAGTGGCACTTCAGCTGCCAGCTCCCCTACCATCATGCGGAAAAGCAGCGGCAGCCCCGACTC
 TCAGCACTGTGCCTCAGATGGCTCCACGGAGACCCTGGCCATGGTTGTGGTAGAGCCTGGGGACACGCTG
 TCCTCCCCGAGTTCGACAGCGGTCCTTTCAGCTCCCAGTCTGATGAGACCTCTCTCAGCACCCTGCT
 CATCTGCCACGCCACCAGTGAAGTCTGCTGCCCTGGGTCCGGTGGACGGCCGCTCCTGCTCCATGGACTC
 TGCTACGGCACCCTCTCCCAACCTCCTTACAAGACTTGTGGCCCCAGGCCAAATGGCAGAGCTAGTG
 CCTCGGGCCCCAGAGTCCCCACGAGTTCCTTCCCCTCCACCCTCGCCCCGTCTCCGCCGCCACCCCTG
 TCCAGCTGTTGAGCTGCCCGCCCCACCTGCTCAAGTCTAAGTCCGAGGCCAGCCTCCTCCAGCTGCTGGC
 AGGGGCTGGCACCATGGGACACCCTCTGCCCCAGCCGACGCTGTGAGAGCTCTGCTGGCTGTTCCA
 GCCCAGGTATTAGGACTCAGGGCTCCCCTCAGGAAGCTGGGCCAGCTGGGATTGCCGAGGGGCCCTA
 GCCCTGGCAGCGGTCTGGGCTAGTCGGCTGCCTGGCCGGGAACCTGCAGGCTCCCACAGGAAGAGGTG
 TGGAGACTGCCCTCGGGGGCTCTCCAGGGTCCAGCCTGAGCCCCACCAGGGGTCTCTGCCACGAC
 AGGAAGCTGACCCTGGCCAGCTCTACCGAATCAGGACCACCCTGCTGCTTAACCTCCAGCTCACTGCT
 CGGAGGTC

AGCGGACCGACGCGTACGCGGCCGCTCGAGCAGAACTCATCTCAGAAGAGGATCTGGCAGCAAATGATATCC
 TGGATTACAAGGATGACGACGATAAGGTTAA

Protein Sequence:

>RC221926 representing NM_001042664
 Red=Cloning site Green=Tags(s)

MHYDGHVRFDLPPQGSVLARNVSTRSCPRTSPAVDLEEEEEESSVDGKGRKSTGLKLSKKKARRRHTD
 DPSKECFTLKFDLNVDIETIIVPAMKKKSLGEVLLPVFERKGIALGKVDIYLDQSNTPLSLTFEAYRFGG
 HYLRVKAPAKPGDEGKVEQGMKDSKSLSLPILRPAGTGPALERVDAQSRRESLDILAPGRRRKNMSEFL
 GEASIPGQEPPTPSSCSLPSGSSGNTGDSWKNRAASRFSGFFSSGPSTSAFGREVDKMEQLEGKLHTY
 SLFGLPRLPRGLRFDHDSWEEYDEDEDEDNACLRLED SWRELIDGHEKLTRRQCHQOEAVWELLHTEAS
 YIRKLRVIINLFLCCLLNLESGLLCEVEAERLFSNIPEIAQLHRRLWASVMAPVLEKARRTRALLQPGD
 FLKGFKMFGLFKPYIRYCMEEEGCMEYMRGLLRDNDLFRAYITWAEKHPQCQRLKLSMMLAKPHQRLTK
 YPLLLKSVLRKTEEPRAKEAVVAMIGSVERFIHHVNACMRQRQERQLA AVVSRIDAYEVVSSSDEVK
 LLKEFLHLDLTAPIPGASPEETRQLLLEGLRMKEGKDSKMDVYCFLFTDLLLVTKAVKKAERTRVIRPP
 LLVDKIVCRELRDPGSFLLIYLNEFHSAVGAYTFQASGQALCRGWVDTIYNAQNQLQLRAEQPPGSQQP
 LQSLLEEEDEQEEEEEEEEEEGEDSGTSAASSPTIMRKSSGSPDSQHCASDGSTETLAMVVVEPGDTL
 SSPEFDSGPFSSQSDETSLSTTASSATPTSELLPLGPVDRGRSCMSDAYSATLSPSLQDFVAPGPMELV
 PRAPESPRVPSPPSPRLRRRTPVQLLSCPPHLLKSKSEASLLQLLAGAGTHGTPSAPSRSELCLAVP
 APGIRTQGSPEAGPSWDCRGAPSPGSGPGLVGCLAGEPAGSHRKRCDLPSGASPRVQPEPPPGVSAQH
 RKLTLAQLYRIRTTLLLNSTLTASEV

SGPTRRRLEQKLISEEDLAANDILDYKDDDDKV

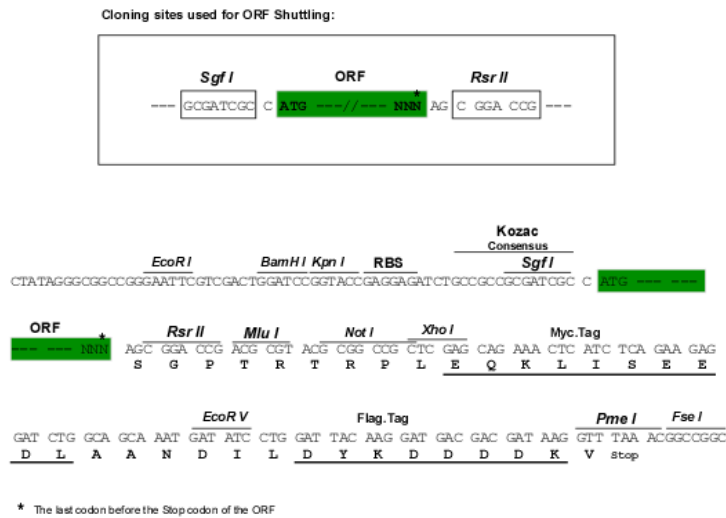
Chromatograms:

https://cdn.origene.com/chromatograms/mk6624_c11.zip

Restriction Sites:

SgfI-RsrII

Cloning Scheme:



ACCN: NM_001042664

ORF Size: 3018 bp

OTI Disclaimer: The molecular sequence of this clone aligns with the gene accession number as a point of reference only. However, individual transcript sequences of the same gene can differ through naturally occurring variations (e.g. polymorphisms), each with its own valid existence. This clone is substantially in agreement with the reference, but a complete review of all prevailing variants is recommended prior to use. [More info](#)

OTI Annotation: This clone was engineered to express the complete ORF with an expression tag. Expression varies depending on the nature of the gene.

Components: The ORF clone is ion-exchange column purified and shipped in a 2D barcoded Matrix tube containing 10ug of transfection-ready, dried plasmid DNA (reconstitute with 100 ul of water).

Reconstitution Method: 1. Centrifuge at 5,000xg for 5min.
2. Carefully open the tube and add 100ul of sterile water to dissolve the DNA.
3. Close the tube and incubate for 10 minutes at room temperature.
4. Briefly vortex the tube and then do a quick spin (less than 5000xg) to concentrate the liquid at the bottom.
5. Store the suspended plasmid at -20°C. The DNA is stable for at least one year from date of shipping when stored at -20°C.

RefSeq: [NM_001042664.1](#), [NP_001036129.1](#)

RefSeq Size: 4715 bp

RefSeq ORF: 3021 bp

Locus ID: 57449

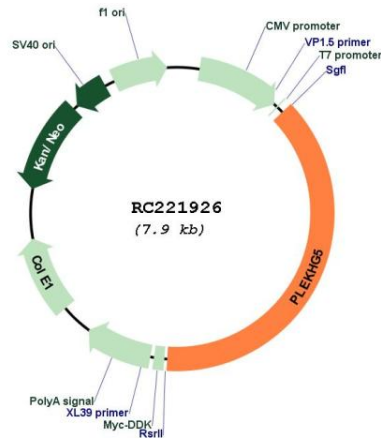
UniProt ID: [O94827](#)

Cytogenetics: 1p36.31

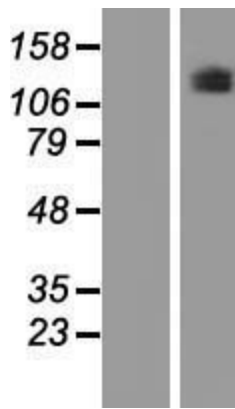
MW: 111.1 kDa

Gene Summary: This gene encodes a protein that activates the nuclear factor kappa B (NFkB1) signaling pathway. Mutations in this gene are associated with autosomal recessive distal spinal muscular atrophy. Multiple transcript variants encoding different isoforms have been found for this gene. [provided by RefSeq, May 2012]

Product images:



Circular map for RC221926



Western blot validation of overexpression lysate (Cat# [LY421016]) using anti-DDK antibody (Cat# [TA50011-100]). Left: Cell lysates from untransfected HEK293T cells; Right: Cell lysates from HEK293T cells transfected with RC221926 using transfection reagent MegaTran 2.0 (Cat# [TT210002]).