

## Product datasheet for **RC221924**

### **KIAA1984 (CCDC183) (NM\_001039374) Human Tagged ORF Clone**

#### **Product data:**

Product Type:	Expression Plasmids
Product Name:	KIAA1984 (CCDC183) (NM_001039374) Human Tagged ORF Clone
Tag:	Myc-DDK
Symbol:	KIAA1984
Synonyms:	bA216L13.7; KIAA1984; PARF
Mammalian Cell Selection:	Neomycin
Vector:	pCMV6-Entry (PS100001)
E. coli Selection:	Kanamycin (25 ug/mL)



[View online »](#)

**ORF Nucleotide Sequence:**

>RC221924 representing NM\_001039374  
 Red=Cloning site Blue=ORF Green=Tags(s)

TTTTGTAATACGACTCACTATAGGGCGGCCGGAATTCGTCGACTGGATCCGGTACCGAGGAGATCTGCC  
 GCC**CGCATCGCC**

ATGAGGAGGCACAGTGTGACAGATGTGGAAGAGCAGACCCAGGAGCTGAAGACCATCACTCAGCTCCAGG  
 AGCAGTGTGCGGCACTCCAGATCCAAGGGTGAAGAGAATATGGACCAGAAACAAGGCCAGCTGGCCCT  
 CCTGCGCAGCAACATCCGCCGCGGGGCCAGGACTGGGCTTTGGCCAAGAAGTATGACCAGTGGACCATC  
 TCCAAGGCCTGCGGAAAAAATTGCCTTTGCGACTGGCGCACTGCCGAGCACCATGGAGGTGGTGGCGG  
 AGAAGTGTGCGCAAGTACGTCTTCGACCGGTGAACATGCACAACCTACTGATCCACCTGGTGGCGGCG  
 CGGGCAGAAGCTGGAGAGCATGCAGCTGGAGCTGGACAGCCTGCGGAGCCAGCCGACGCCAGCAAGGAG  
 GAGCTGCGGCTGTGCAGATCATCCGCCAGCTGGAGAACAACATCGAGAAGACAATGATCAAGATCATCA  
 CCAGCCAGAACATCCACCTGCTGTATTTGGACCTGCTGGATTATCTGAAGACAGTGTGGCAGGATACCC  
 CATTGAGCTGGACAAGCTGCAGAACCTCGTGGTCAACTACTGCTCAGAGCTGTCCGATATGAAGATCATG  
 TCCAAGATGCCATGATGATCACGGATGAGGTCAAGAGGAACATGAGGCAAAAGGGAGGCGTCTTTCATCG  
 AGGAGCGCCGGCAAGGGAGAACCAGGCTCAACCAGCAGAAAGCTGATCGACAAGATCCACACGAAAGGA  
 GACCAGCGAGAAGTACCGCCGGGCGCAGATGGACTTGGACTTCCCTCGAACCTGATGAGCACGGAGACC  
 CTGAAATTGAGGAGAAAAGACCTCCACAGCAGAAATGGAATACCAGTCGGGCGTGACTGCTGTGGTGG  
 AGAAGGTCAAGAGTGTGTACGGTGTCTCACGTCTGGGACATCACTAGCCGCTTCTGGCCAGAGGAA  
 CACGGAGGAGAACCTGGAGCTGCAGATGGAGGACTGTGAGGAGTGGCGGTGCAGCTGAAGGCCCTGGT  
 AAGCAGCTGGAGCTGGAGGAGCCGTGCTCAAGTTCGCCAGAACCTAGCTCCATCAGCTTCAAGTCCG  
 TTGAGAAGAAAAATGACAGACATGCTAAAAGAGGAAGAAGAGAGGCTCCAGCTGGCGCACAGCAACATGAC  
 CAAGGGCCAGGAGCTGCTGCTGACCATCCAGATGGGCATCGACAACCTCTATGTCCGGCTGATGGGCATT  
 AACTTGCCTGCGACCCAGAGAGAAGTGGTGTCTCCAACACCCTCGATTTGAACGCAAGCTGGCGTACT  
 GCGAGGGGAAGCTCACGTACCTGGCTGACAGAGTGCAGATGGTGTCCAGGACCGAGGAGGGCGACACAAA  
 GGTGAGGGACACCCTGGAGTCTCGACTCTGATGGAGAAGTACAACACCAGGATCAGCTTTGAGAACCGG  
 GAGGAGGATATGATCGACACCTTCCAGTCCCCGACATGGACCACAGCTACGTCCCTTCGCGCGCCGAGA  
 TCAAGAGGCAGGCGCAGCGGCTAATCGAGGGGAAGCTCAAGGCGGCAAGAAAAAGAAGAAG

**ACGCGT**ACGCGGCCGCTCGAGCAGAAACTCATCTCAGAAGAGGATCTGGCAGCAAATGATATCTGGATT  
 ACAAGGATGACGACGATAAGGTTTAA

**Protein Sequence:**

>RC221924 representing NM\_001039374  
 Red=Cloning site Green=Tags(s)

MRRHSETDVVEEQTELKTIITQLQEQRALQIQGVKENMDQNKATLALLRSNIRRGAQDWALAKKYDQWTI  
 SKACGNLPLRLAHCSTMEVREKLRKYVDRVNMHNLIIHLVRRRGQKLESMQLELDSLRSQPDASKE  
 ELRLLQIIRQLENNIEKTMIKIITSQNIHLLYLDLLDYLKTVLAGYPIELDKLQNLVNYCSELSDMKIM  
 SQDAMMITDVEKRNMRQREASFIEERRARENRLNQQKLIKDKIHTKETSEKYRRGQMDLDFPSNLMSTET  
 LKLRRKETSTAEMEYQSGVTAVVEKVS AVRCSHVWDITSRFLAQRNTEENLELQMEDCEEWRVQLKALV  
 KQLELEEA VLKFRQKPSISFKSVEKKMTDMLKEEEERLQLAHSNMTKGQELLLTIQMGIDNLYVRLMGI  
 NLPATQREVVL SNTLDLNSKLAYCEGKLYLADRVQMVSRTEEGDTKVRDTLESSTLMEKYNTRISFENR  
 EEDMIDTFQFPMDHSYVPSRAEIKRQAQRLIEGKLLKAAKKKKK

**TRTRPLEQKLI**SEEDLAANDILDYKDDDDKV

**Chromatograms:**

[https://cdn.origene.com/chromatograms/mk8039\\_e05.zip](https://cdn.origene.com/chromatograms/mk8039_e05.zip)

**Restriction Sites:**

Sgfl-Mlul

**Cloning Scheme:**


**ACCN:** NM\_001039374

**ORF Size:** 1602 bp

**OTI Disclaimer:** The molecular sequence of this clone aligns with the gene accession number as a point of reference only. However, individual transcript sequences of the same gene can differ through naturally occurring variations (e.g. polymorphisms), each with its own valid existence. This clone is substantially in agreement with the reference, but a complete review of all prevailing variants is recommended prior to use. [More info](#)

**OTI Annotation:** This clone was engineered to express the complete ORF with an expression tag. Expression varies depending on the nature of the gene.

**Components:** The ORF clone is ion-exchange column purified and shipped in a 2D barcoded Matrix tube containing 10ug of transfection-ready, dried plasmid DNA (reconstitute with 100 ul of water).

- Reconstitution Method:**
1. Centrifuge at 5,000xg for 5min.
  2. Carefully open the tube and add 100ul of sterile water to dissolve the DNA.
  3. Close the tube and incubate for 10 minutes at room temperature.
  4. Briefly vortex the tube and then do a quick spin (less than 5000xg) to concentrate the liquid at the bottom.
  5. Store the suspended plasmid at -20°C. The DNA is stable for at least one year from date of shipping when stored at -20°C.

**RefSeq:** [NM\\_001039374.5](#)

**RefSeq Size:** 1740 bp

**RefSeq ORF:** 1605 bp

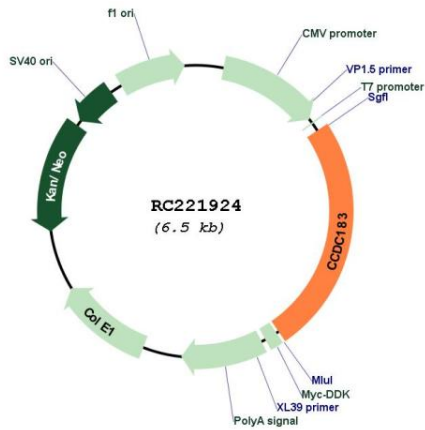
**Locus ID:** 84960

**UniProt ID:** [Q5T5S1](#)

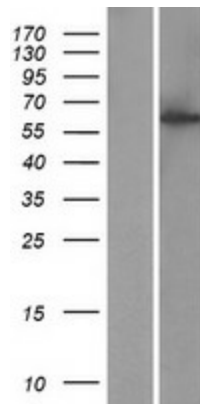
**Cytogenetics:** 9q34.3

MW: 62.5 kDa

Product images:



Circular map for RC221924



Western blot validation of overexpression lysate (Cat# [LY422041]) using anti-DDK antibody (Cat# [TA50011-100]). Left: Cell lysates from untransfected HEK293T cells; Right: Cell lysates from HEK293T cells transfected with RC221924 using transfection reagent MegaTran 2.0 (Cat# [TT210002]).