

Product datasheet for **RC221920**

SRMS (NM_080823) Human Tagged ORF Clone

Product data:

Product Type:	Expression Plasmids
Product Name:	SRMS (NM_080823) Human Tagged ORF Clone
Tag:	Myc-DDK
Symbol:	SRMS
Synonyms:	C20orf148; dj697K14.1; PTK70; SRM
Mammalian Cell Selection:	Neomycin
Vector:	pCMV6-Entry (PS100001)
E. coli Selection:	Kanamycin (25 ug/mL)



[View online »](#)

ORF Nucleotide Sequence:

>RC221920 representing NM_080823
 Red=Cloning site Blue=ORF Green=Tags(s)

TTTTGTAATACGACTCACTATAGGGCGGCCGGAATTCGTCGACTGGATCCGGTACCGAGGAGATCTGCC
 GCC**CGCATCGCC**

ATGGAGCCGTTCTCAGGAGCGGCTGGCCTTCTGTCTTCTTCTGGGACAAGATCTGGCCGGCGGGCG
 GCGAGCCGGACCATGGCACCCCCGGTCCCTGGACCCCAACTGACCCAGTGCCACGCTCCCCGCCGA
 GCCTTGACAGCCCTTCCCTCAGCTCTTCTTGGCCTCTATGACTTCACGGCGCGGTGTGGCGGGGAGCTG
 AGTGTCCGCCCGGGGACAGGCTCTGTGCCCTCGAAGAGGGGGCGGCTACATCTTCGCACGCAGGCTTT
 CGGGCCAGCCAGCGCCGGGCTCGTGCCCATCACCCACGTGGCCAAGGCTTCTCTGAGACGCTCTCAGA
 CCAACCCTGGTACTTTAGCGGGTCAGTCGACCCAGGCACAGCAGTGTCTCTCCCCACCAACGAA
 CCAGGGCCCTTCTCATCCGGCCAGCGAGAGCAGCTCGGGGGTACTCACTGTCAGTCCGGGCGCAGG
 CCAAGGTCTGCCACTACCGGGTCTCCATGGCAGCTGATGGCAGCCTCTACCTGCAGAAGGGACGGCTCTT
 TCCCGGCTGGAGGAGCTGCTCACTACTACAAGCCAAGTGAAGCTGATCCAGAACCCTCTGCTGCAG
 CCCTGCATGCCCCAGAAGGCCCGAGGCAGGACGTGTGGGAGCGGCCACACTCCGAGTTCGCCCTTGGGA
 GGAAGCTGGGTGAAGGCTACTTTGGGGAGGTGTGGGAAGGCTGTGGCTGGGCTCCCTGCCCGTGGCGAT
 CAAGGTCAAGTCAGCCAACATGAAGCTCACTGACCTCGCCAAGGAGATCCAGACACTGAAGGGCCTG
 CGGCACGAGCGGCTCATCCGGCTGCACGCAGTGTGCTCGGGCGGGGAGCCTGTGTACATCGTCACGGAAC
 TCATGCGCAAGGGGAACCTGCAGGCTTCTGGGACCCCCGAGGGCCGGGCCCTGCGTCTGCCGCCACT
 CCTGGGCTTTGCTGCCAGGTGGCTGAGGGCATGAGCTACCTGGAGGAGCAGCGGTTGTGCACCGGGAC
 TTGGCCGCCCGGAACGTCTCGTGGACGACGGCTGGCCTGCAAGGTGGTACTTGGCCTGGCCCGGC
 TGCTCAAGGACGACATCTACTCCCCGAGCAGCAGCTCCAAGATCCCGTCAAGTGACAGCGCTGAGG
 GGCCAATTATCGTGTCTTCTCCAGAAGTCAGAGTCTGGTCTTCGGCGTCTGCTGCACGAGTTTTTC
 ACCTATGGCCAGTGTCCCTATGAAGGGATGACCAACCACGAGACGCTGCAGCAGATCATGCGAGGGTACC
 GGCTGCCGCGCCCGGCTGCCTGCCCGGGGAGGTCTACGTGCTCATGCTGGAGTGTGGAGGAGCAGCCC
 CGAGGAACGGCCCTCTTTGCCACGCTGCGGGAGAAGCTGCACGCCATCCACAGATGCCACCCC

ACGCGTACGCGGCCGCTCGAGCAGAACTCATCTCAGAAGAGGATCTGGCAGCAAATGATATCTGGATT
 ACAAGGATGACGACGATAAGGTTTAA

Protein Sequence:

>RC221920 representing NM_080823
 Red=Cloning site Green=Tags(s)

MEPFLRRRLAFLSFFWDKIWPAGGEPDHGTPGSLDPNTDPVPTLPAEPCSPFPQLFLALYDFTARCGGEL
 SVRRGDRLCALEEGGGYIFARRLSGQPSAGLVPITHVAKASPETLSDQPWFSGVSRTQAQQLLLSPPNE
 PGAFILRPSESSLGGYLSVRAQAKVCHYRVSMADGSLYLQKGRFLPGLLELLTYYKANWKLIQNPPLQ
 PCMPQKAPRQDVWERPHSEFALGRKLGEGYFGEVWEGLWLGSLPVAIKVIKSANMKLTDLAKEIQTLLKGL
 RHERLIRLHAVCSGGEPVYIVTELMRKGNLQAFGLTPEGRALRPLPGLFACQVAEGMSYLEEQRVVHRD
 LAARNVLVDDGLACKVADFGLARLLKDDIYSPSSSSKIPVKWTAPEAANYRVFSQKSDVWSFGVLLHEVF
 TYGQCPYEGMTNHETLQIMRGYRLPRPAACPAEVVYVLMLECWRSPEERPSFATLREKLHAIHRCHP

TRTRPLEQKLISEEDLAANDILDYKDDDDKV

Chromatograms:

https://cdn.origene.com/chromatograms/mg4141_g05.zip

Restriction Sites:

Sgfl-MluI

Cloning Scheme:

Cloning sites used for ORF Shutting:



* The last codon before the Stop codon of the ORF

ACCN: NM_080823

ORF Size: 1464 bp

OTI Disclaimer: The molecular sequence of this clone aligns with the gene accession number as a point of reference only. However, individual transcript sequences of the same gene can differ through naturally occurring variations (e.g. polymorphisms), each with its own valid existence. This clone is substantially in agreement with the reference, but a complete review of all prevailing variants is recommended prior to use. [More info](#)

OTI Annotation: This clone was engineered to express the complete ORF with an expression tag. Expression varies depending on the nature of the gene.

Components: The ORF clone is ion-exchange column purified and shipped in a 2D barcoded Matrix tube containing 10ug of transfection-ready, dried plasmid DNA (reconstitute with 100 ul of water).

Reconstitution Method:

1. Centrifuge at 5,000xg for 5min.
2. Carefully open the tube and add 100ul of sterile water to dissolve the DNA.
3. Close the tube and incubate for 10 minutes at room temperature.
4. Briefly vortex the tube and then do a quick spin (less than 5000xg) to concentrate the liquid at the bottom.
5. Store the suspended plasmid at -20°C. The DNA is stable for at least one year from date of shipping when stored at -20°C.

RefSeq: [NM_080823.3](#)
RefSeq Size: 1516 bp

RefSeq ORF: 1467 bp

Locus ID: 6725

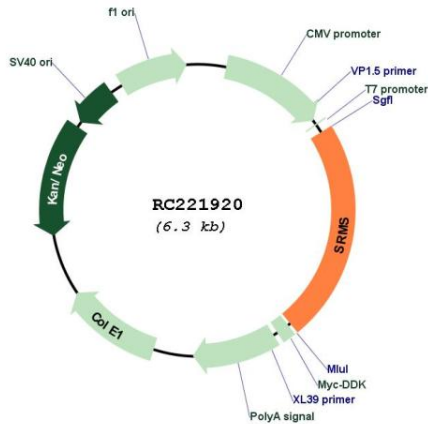
UniProt ID: [Q9H3Y6](#)
Cytogenetics: 20q13.33

Protein Families: Druggable Genome, Protein Kinase

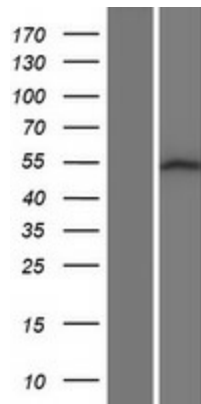
MW: 54.3 kDa

Gene Summary: Non-receptor tyrosine-protein kinase which phosphorylates DOK1 on tyrosine residues (PubMed:23822091). Also phosphorylates KHDRBS1/SAM68 and VIM on tyrosine residues (PubMed:29496907). Phosphorylation of KHDRBS1 is EGF-dependent (PubMed:29496907). [UniProtKB/Swiss-Prot Function]

Product images:



Circular map for RC221920



Western blot validation of overexpression lysate (Cat# [LY409027]) using anti-DDK antibody (Cat# [TA50011-100]). Left: Cell lysates from untransfected HEK293T cells; Right: Cell lysates from HEK293T cells transfected with RC221920 using transfection reagent MegaTran 2.0 (Cat# [TT210002]).