

Product datasheet for RC221909

ZNF367 (NM_153695) Human Tagged ORF Clone

Product data:

Product Type: Expression Plasmids
Product Name: ZNF367 (NM_153695) Human Tagged ORF Clone
Tag: Myc-DDK
Symbol: ZNF367
Synonyms: AFF29; CDC14B; ZFF29
Mammalian Cell Selection: Neomycin
Vector: pCMV6-Entry (PS100001)
E. coli Selection: Kanamycin (25 ug/mL)
ORF Nucleotide Sequence: >RC221909 representing NM_153695
 Red=Cloning site Blue=ORF Green=Tags(s)

TTTTGTAATACGACTCACTATAGGGCGGCCGGAATTCGTCGACTGGATCCGGTACCGAGGAGATCTGCC
 GCC**CGATCGCC**

ATGATCCGGGGCTTCGAGGCGCCCATGGCGGAGAACCCGCCGCCGCCGCCGCCCGCCCGTTCATCTTCTGCC
 ACGACTCCCCGAAGCGGGTGTGGTGTCCGGTATCAGGACGACCCCGATCAAGCCAACGTGCGGCGGTGG
 AGGGGAGCCGGAGCCGCCGCCCGCTCATCCCCACGACCCCGCTTCAGCGACTTCATGGTGTACCCG
 TGGCGCTGGGGCGAGAACGCACACAACGTGACGCTCAGCCCTGGGGCCGGGGGGCCGCCCTCGGCC
 CCCTGCCTGCAGCCGAGCCGCCGAGCACTCGGGCTTCGTGGCCGGGGCGCCCGCCGCCCGCCTC
 GGCTCCGCCCGCCTCGGGAGGTGAGGACGAGGAGGAAGCGAGCAGCCAGACAGCGCCACCTCAAG
 GATGGAATCCGACGTGGTAGGCCAGAGCAGATACTGTCCGCGATTTAATAAATGAAGGAGAGCATTTCAT
 CCAGCAGAATCCGTTGTAACATCTGTAATAGGGTGTTCACGGGAGAAAATCGTCCAGGCTCACAAAAG
 GACTCATAACAGGTGAGAGGCCATCTGTGTGACTATCCAGACTGTGAAAAGCCTTTGTTCAAAGTGGA
 CAGCTCAAACACATCAGCGTCTCACACCGGAGAGAAACCTTTGTTGTTTCAGAAAATGGCTGCCTGA
 GCAGATTCACCCATGCAAACCGCCACTGTCCGAAGCACCCCTACGCCAGGCTGAAGAGAGAGGAGCCAC
 GGACACACTCAGCAAACATCAGGCTGCCGACAACAAGGCCGGCCGAGTGGCTGGCGAGGTATTGGGAA
 ATGAGAGAGCAGCGCACCCCACTTTGAAAGCAAGCTGGTTGAGAAGGCTGATCAGGAGCAGCAGGACC
 CTCTGGAATACCTTCAGTCTGATGAAGAGGACGACGAGAAGAGAGGGGCCAGCGCCGGCTGCAGGAGCA
 CGGGGAGCGCCTGCATGGAGCCCTCGCGCTCATAGAGCTTGCCAACCTGACTGGGGCGCCACTCCGACAG

ACGCGTACGCGGCCGCTCGAGCAGAACTCATCTCAGAAGAGGATCTGGCAGCAAATGATATCCTGGATT
 ACAAGGATGACGACGATAAGGTTTAA



[View online »](#)

Protein Sequence: >RC221909 representing NM_153695
Red=Cloning site Green=Tags(s)

MIRGFEAPMAENPPPPPPVIFCHDSPKRVLVSVIRTTPIKPTCGGGGEPEPPPPLIPTSPGFSDFMVYP
 WRWGENAHNVTLSPGAAGAAASAALPAAAAAEHSGLRGRGAPPAASASAAAASGGDEEEAASSPDSGHLK
 DGIRRRGRPRADTVRDLINEGEHSSSRIRCNICNRVFPREKSLQAHKRTHGERPYLCDYPDCGKAFVQSG
 QLKTHQRLHTGEKPFVCSENGCLSRFTHANRHCPKHPYARLKREEPTDTLSKHQAADNKAEEWLARYWE
 MREQRTPTLKGKLVQKADQEQDPLEYLSQDEEDDEKRGARRLQEQRRERLHGALALIELANLTGAPLRQ

TRTRPLEQKLISEEDLAANDILDYKDDDDKV

Chromatograms: https://cdn.origene.com/chromatograms/mk8121_b12.zip

Restriction Sites: SgfI-MluI

Cloning Scheme:

Cloning sites used for ORF Shuttling:



* The last codon before the Stop codon of the ORF

ACCN: NM_153695

ORF Size: 1050 bp

OTI Disclaimer: The molecular sequence of this clone aligns with the gene accession number as a point of reference only. However, individual transcript sequences of the same gene can differ through naturally occurring variations (e.g. polymorphisms), each with its own valid existence. This clone is substantially in agreement with the reference, but a complete review of all prevailing variants is recommended prior to use. [More info](#)

OTI Annotation: This clone was engineered to express the complete ORF with an expression tag. Expression varies depending on the nature of the gene.

Components: The ORF clone is ion-exchange column purified and shipped in a 2D barcoded Matrix tube containing 10ug of transfection-ready, dried plasmid DNA (reconstitute with 100 ul of water).

Reconstitution Method:

1. Centrifuge at 5,000xg for 5min.
2. Carefully open the tube and add 100ul of sterile water to dissolve the DNA.
3. Close the tube and incubate for 10 minutes at room temperature.
4. Briefly vortex the tube and then do a quick spin (less than 5000xg) to concentrate the liquid at the bottom.
5. Store the suspended plasmid at -20°C. The DNA is stable for at least one year from date of shipping when stored at -20°C.

Note: Plasmids are not sterile. For experiments where strict sterility is required, filtration with 0.22um filter is required.

RefSeq: [NM_153695.4](#)

RefSeq Size: 3714 bp

RefSeq ORF: 1053 bp

Locus ID: 195828

UniProt ID: [Q7RTV3](#)

Cytogenetics: 9q22.32

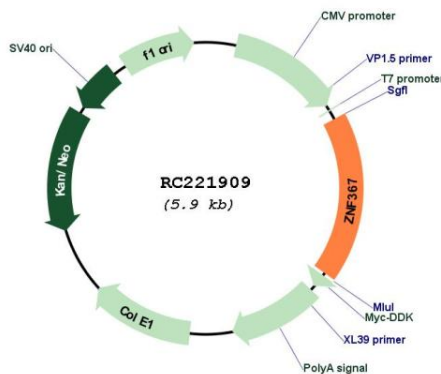
Domains: zf-C2H2

Protein Families: Transcription Factors

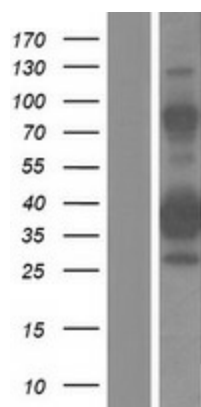
MW: 38.9 kDa

Gene Summary: Transcriptional activator. Isoform 1 may be involved in transcriptional activation of erythroid genes.[UniProtKB/Swiss-Prot Function]

Product images:



Circular map for RC221909



Western blot validation of overexpression lysate (Cat# [LY406979]) using anti-DDK antibody (Cat# [TA50011-100]). Left: Cell lysates from untransfected HEK293T cells; Right: Cell lysates from HEK293T cells transfected with RC221909 using transfection reagent MegaTran 2.0 (Cat# [TT210002]).