

Product datasheet for RC221908

TECPR2 (NM_014844) Human Tagged ORF Clone

Product data:

Product Type:	Expression Plasmids
Product Name:	TECPR2 (NM_014844) Human Tagged ORF Clone
Tag:	Myc-DDK
Symbol:	TECPR2
Synonyms:	KIAA0329; SPG49
Vector:	pCMV6-Entry (PS100001)
E. coli Selection:	Kanamycin (25 ug/mL)
Cell Selection:	Neomycin
ORF Nucleotide Sequence:	>RC221908 representing NM_014844 Red=Cloning site Blue=ORF Green=Tags(s)

TTTTGTAATACGACTCACTATAGGGCGCCGGAATTCGTCGACTGGATCCGGTACCGAGGAGATCTGCC
GCCGCGATCGCC

ATGGCATCGATATCAGAGCCTGTTACATTCAGAGAGTTCTGCCCGTTGACTATCTCCTCAATGCCATTC
CGACAAAGATCCAGAAGGGTTCCGCTCTATCGTGGTCTATCTCACGGCCCTCGACACCAACGGGGACTA
CATCGCGGTGGGCAGCAGCATCGGCATGCTCTATCTGTACTGCCGGCACCTCAACCAGATGAGGAAGTAC
AACTTTGAGGGGAAGACGGAATCTACTGTGGTGAAGCTGCTGAGCTGCTTTGATGACCTGGTGGCAG
CAGGCACAGCCTCTGGCAGGGTTCAGTTTTCAACTTGTATCTTCATTGCCAGGGAGAAATAAACAGCT
TCGGAGATTTGATGTCAGTGGTATTACAAAAATAGCATTACAGCTCTGGCTTGGAGCCCAATGGAATG
AAATTGTTCTCTGGAGATGACAAAGGCAAAATGTTTATTCTTCTGGATCTAGACCAGGGGCTCTGTA
ACTCCCAGCTGGTGTGGAGGAGCCATCTCCATTGTGCAGCTGGATTATAGCCAGAAAGTGTCTGGT
CTCTACTCTGCAAAGAAGTCTGCTCTTTTACACTGAAGAAAAGTCTGAAGGCAAATGGAACACAACCA
AGGAAAAGTACTGGGAAATTTGGTCTGTTTATACCAGGACTCTGAAGCAAAGTATACCTTGT
ATGCGTCACGGCCCGGGCTCCGGCTATGGAAGGCTGATGTCCACGGGACTGTTCAAGCCAGTTTATCTT
AAAAGATGCTTTTCCGGGGAGTCAAGCCTTTTGAAGTCAAGGCTGCTGGAATCCCCCAACAGTGGGA
AGTTGCAGCTTACCTGAGAGGCACCTGGGGCTGTTTCATGTTTCTTCAAGAAGGCTGGGTGCTGAGTT
GGAATGAATATAGTATCTATCTCCTAGACACAGTCAACCAGGCCACAGTTGCTGGTTTGGAGGATCCGG
TGATATTGTGCTGTTTCGTGCACAGAAAATGAAATATTTTTCTTGAAGGAGATAGGAACATTATAAGA
ATTTCAAGCAGGCCTGAAGGATTAACATCAACAGTGAAGATGGTCTGGAGATGTCTGGATGCTCAGAGC
GTGTCCACGTGCAGCAAGCGGAGAAGCTGCCAGGGGCCACAGTTTCTGAGACGAGGCTCAGAGGCTCTTC
CATGGCCAGCTCCGTGGCCAGCGAGCCAAGGAGCAGGAGCAGCTCGCTCAACTCCACCGACAGCGGCTCC
GGGCTCCTGCCCCCTGGGCTCCAGGCCACCCCTGAGCTGGGCAAGGGCAGCCAGCCCTGTCACAGAGAT
TCAACGCCATCAGCTCAGAGGACTTTGACCAGGAGCTTGTGCGTAAGCCTATCAAAGTAAAAGGAAGAA
GAAGAAGAAGAAGACAGAAGGTGGAAGCAGGAGCACCTGTACAGCTCCCTGGAATCGACACCCTGCTCC
GAATTTCTGGGACAGTCCCAGTCTTGAACACAGACTTGCTGTCGATGACCTCAAGTGTCTGGGCA



[View online »](#)

GTAGCGTGGATCAGTTAAGTGCAGAGTCTCCAGACCAGGAAAGCAGCTTCAATGGTGAAGTGAACGGTGT
CCCACAGGAAAATACTGACCCCGAAACGTTTAATGTCCTGGAGGTGTGAGGATCAATGCCTGATTCTCTG
GCTGAGGAAGATGACATTAGAAGTAAAAGCCACACTGTCACCATGCACATGGGCGGGAGCTGCTCAATG
GAGCGAGGAAGATGTGGGAGGCAGTGTGTACGGGACTCGGAGATGAGCCGTGTCTGCAGATGATGG
ACCAAAATGACACACAGTTACCCCTCCAAGAACAGGACAGCTCTCTGGGGCGCATGATGGGAAGACATC
CAACCCATTGGCCCCAAAGCACTTTTTGTGAAGTCCCCCTCTGAACACTCACTCACTGTGCCTCCAGCC
TCAGCTGGGCCCCAAGTGTGAACAGTGGCTGCCTGGGACCAGAGCTGATGAAGGCAGCCCGTGGAGCC
CAGCCAAGAGCAGGACATCCTAACCCAGCATGGAGGCCTCTGGCCACCTCAGCACAAATCTCTGGCATGCT
GTCACTGATGATGACACAGGTGACAGAAAGAAATACCCATTCTGAACGTGTCTTGGGGAGTGTGGGAGGAC
AGCTGACTCCGGTCTCTGCCTTGGCAGCCAGCACTCACAAGCCCTGGCTTGGAGCAGCTCCACGGGATCA
GACATTGACGTCCAGCGATGAGGAGGACATCTATGCCACGGGCTTCTTCTTCACTCAGAGACGAGT
GTGACAGAGCTCGGACCTAGTTGCTCCAGCAGGACCTGAGCCGGCTGGGTGCAGAGGACCCGGGCTGC
TCAAGCCAGATCAGTTTGCAGAAAGCTGGATGGGCTACTCGGGTCCCGGCTATGGCATCCTCAGCTTGGT
GGTCTCCGAGAAGTATATCTGGTGCCTGGACTACAAGGGCGGCTGTTCTGCAGCGGCTTCCGGGGCC
GGGCTGCCTGGCAGAAGTTTGAAGATGCTGTCCAGCAGGTGGCAGTCTCGCCCTCAGGAGCCCTTCTCT
GGAAGATTGAACAGAAATCTAACCGGGCTTTTGTGTGGGAAAGTACCATCAAGGGGAAGCGGCACTG
GTACGAAGCCCTGCCCCAGGCAGTGTGTGGCCCTGAGCGATGACACGGCTGGATCATCAGGACCAGT
GGGGACCTATACTTGCAGACAGGTCTGAGCGTGGATCGCCCTTGTGCCAGAGCCGTAAGGTTGACTGTG
CCTACCCGCTGTCCAGATCACAGCCCGGAACAATGTGGTGTGGGCGCTGACAGAGCAGAGGGCCCTCCT
GTACCGGGAGGGCGTGTGAGCAGCTTCTGTCCGGAAGGCGAGCAGTGAAGTGTGACATTGTGAGCGAAAGG
CAAGCTTTAGAACCCGTGTCATAACGCTCGGGGATCAGCAGACTCTCTGGGCCCTGGACATCCATGGGA
ACCTGTGGTTCAGAACTGGCATTATTTCCAAGAAGCCCCAAGGAGATGACGACCATTGGTGGCAAGTGTG
CATCAGGACTATGTGGTGTGGACAGTGCAGCTTATTTCCAGACGATAATCCATGCCACTCACTCGGTG
GCCACAGCAGCCCAAGCCCCGTAGAAAAGGTGGCAGATAAGCTGCGCATGGCGTTTTGGTCCAGCAGC
TTCAGTGCAGCCAAGCCTTCTCGGGTCAATAACAGCGGTGTCTGGATCTCTCGGGCAAGAATGAATT
CCACGTGCTAAGGGAAGTCTCATAGGCACCTACTGGAATCATGTGGTCCCGTGGGACAGCTTCTGCT
ACAAAATGGGCCCTTTGTGTTGGCTTCTGCAGCTCCACGAAGGAAGGAAGCTTCTGTGGCTGTGCCAGA
GCAGCAAGGACCTGTGCAGCGTCAAGCGCCAGAGCGCACAGTCCGCGCCCTCCACGGTGCAGTGCCTCC
CGAAGCCGAGATGCGCGCCTATGCCGCTGCCAGGATGCGCTGTGGGCGTGGACAGCCTCGGCCAGGTG
TTCATCAGGACGCTCTCAAGAGCTGCCCCACGGGATGCACTGGACCAGGCTGGACCTCTCCAGCTAG
GAGCTGTAAAATTGACAAGCTTGGCATGTGAAATCAGCACATCTGGGCCTGTGATTCCAGGGTGGAGT
TTACTTCCGTGTAGGGACTCAGCCTCTCAATCCCAGTCTCATGCTTCCAGCCTGGATAATGATTAGCCA
CCTGTCCAGCCCGGGGTGAGCTTGGTCAAGCTCCATTCCAGCCCAACGACCAGATGCTGTGGGTGC
TTGACAGCAGGTGGAACGTGCACGTGCGGACCGGGATCACCGAGGAGATGCCTGTGGGGACCGCCTGGGA
GCATGTGCCAGGGTTGCAGGCCTGCCAGCTGGCGCTGAGCACCAGGACCGTGTGGGCCCGCTGTCCAAAC
GGAGACCTCGCCCGGGTACGGCGTCAAGACAAGAACCCCGGGGACTACTGGAAGAAAATCCCG
GCAGCGTGTGTTTACAGTACTGCGTCAGATGAGCTGTGGCTGTGGGCCCGCCCGCTACCTCT
CCAACGGCTGACAAGACGTTTACGCACTCGCACGGCACCCAGAAGAGCAGCCAGGCCCATGCCCCAC
CCTGAGGACCTGGAGACGAGTGGGAGGTCATC

ACGCGTACGCGGCGCTCGAGCAGAACTCATCTCAGAAGAGGATCTGGCAGCAATGATATCCTGGATT
ACAAGGATGACGACGATAAGGTTTAA

Protein Sequence: >RC221908 representing NM_014844
 Red=Cloning site Green=Tags(s)

MASISEPVTFRFCPLYLLNAIPTKIQKGFERSIVVYLALDNTNGDYIAVGSSIGMLYL YCRHLNQMRY
 NFEFGKTESITVVKLLSCFDDLVAAGTASGRVAVFQLVSSLPGRNKQLRRFDVTGIHKNSITALAWSPNGM
 KLFSGDDKGI VYSSLDLDQGLCNSQLVLEEPSIVQLDYSQKVLVSTLQSRLLFYTEEKSVRQIGTQP
 RKSTGKFGACFIPGLCKQSDLTL YASRPLRLWKADVHGT VQATF ILKDFAAGGVKPFELHPRLESPNSG
 SCSLPERHLGLVSCFFQEGWVLSWNEYSIYLLDTV NQATVAGLEGSGDIVSVCTENEIFFLKGDRNIIR
 ISSRPEGLTSTVRDGLEMSGCSERVHVQQA EKLPGATVSETRLRGSSMASSVASEPRSRSSSLNSTDSGS
 GLLPPGLQATPELKGQSQPLSQRFNAISS EFDQELVVKPIKVKRKKKKKTEGGRSTCHSSLESTPCS
 EFPGDSPQSLNTDLLSMTSSVLGSSVDQLSAESPDQESSFNGEVNGVPQENTDPETFNVLEVSGSMPDSL
 AEEDDIRTEMPHCHHAHGRELNGAREDVGGSDVTGLGDEPCADDGPNSTQLPFQE QDSSPGAHDGEDI
 QPIGPQSTFCEVPLLNLSLTVPSSL SWAPSAEQWLPGTRADEGSPVEPSQE QDILTSM EASGHLSTNLWHA
 VTDDDTGQKEIPI SERVLG SVGGQLTPVSALAASTHKPWLEQPPRDQTLTSSDEEDIYAHGLPSSSSETS
 VTELG PSCSQDL SRLGAEDAGLLKPDQFAESWMGYSGPGYGILSLV VSEKIWCLDYKGG LFCALPGA
 GLRWQKFEDAVQQVAVSPSGALLWKIEQKSNRAFACGKVTIKGKRHWY EALPQAVFVALSDDTAWIIRTS
 GDLYLQ TGLSVDRPCARAVKVD CPYPLSQITARNNVVWALTEQRALLYREGVSSFCPEGEQWKCDIVSER
 QALEPVCITLGDQQTLWALDIHG NLFRTGII SKKPQGDDHWWQV SITDYVVF DQCSLFQTI IHAHHSV
 ATAAQAPVEKVADKLRMAFW SQQLQCQPSLLGVNNSGVWISSGKNEFHVAKGSLIGTYWNHVVPRGTASA
 TKWAFV LASAAPTKEGSFLWLCQSSKDLCSVSAQSAQSRPSTVQLPPEAEMRAYAACQDALWALDSLQGV
 FIRTL SKSCTGMHWTRLDLSQLGAVKLTSLACGNQHIWACDSRGGVYFRVGTQPLNPSMLPAWIMIEP
 PVQPAGVSLSVHSSPNDQMLWV LDSRWNVHVRTGIT EEMPVGT AWEHVPGLQACQLALSTRTVWARCPN
 GD LARRYGVTDKNPAGDYWKKIPGSVSCFVTV T ASDELWAVGPPGYLLQRLTKTF SHSHGTQKSSQAAMPH
 PEDLEDEWEVI

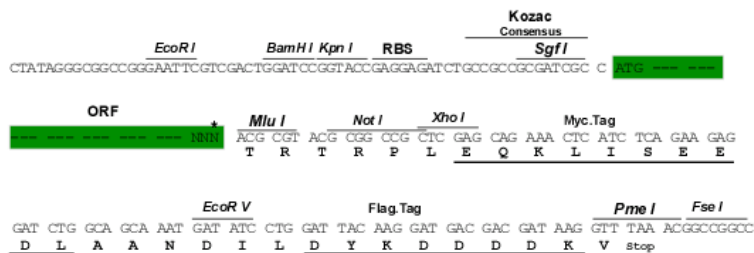
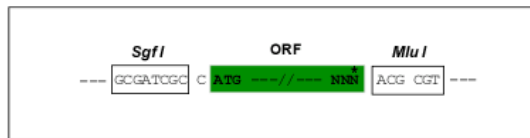
TRTRPLEQKLISEEDLAANDILDYKDDDDKV

Restriction Sites:

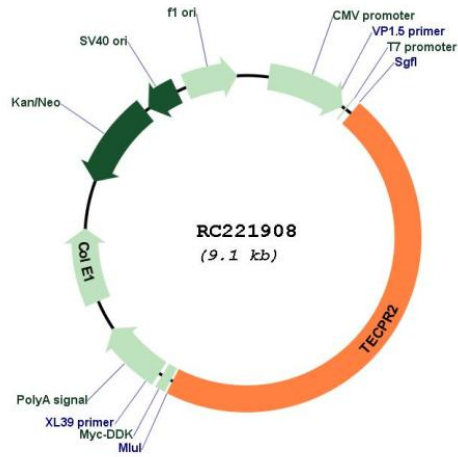
Sgfl-MluI

Cloning Scheme:

Cloning sites used for ORF Shuttling:



* The last codon before the Stop codon of the ORF

Plasmid Map:


ACCN: NM_014844

ORF Size: 4233 bp

OTI Disclaimer: The molecular sequence of this clone aligns with the gene accession number as a point of reference only. However, individual transcript sequences of the same gene can differ through naturally occurring variations (e.g. polymorphisms), each with its own valid existence. This clone is substantially in agreement with the reference, but a complete review of all prevailing variants is recommended prior to use. [More info](#)

OTI Annotation: This clone was engineered to express the complete ORF with an expression tag. Expression varies depending on the nature of the gene.

Components: The ORF clone is ion-exchange column purified and shipped in a 2D barcoded Matrix tube containing 10ug of transfection-ready, dried plasmid DNA (reconstitute with 100 ul of water).

Reconstitution Method:

1. Centrifuge at 5,000xg for 5min.
2. Carefully open the tube and add 100ul of sterile water to dissolve the DNA.
3. Close the tube and incubate for 10 minutes at room temperature.
4. Briefly vortex the tube and then do a quick spin (less than 5000xg) to concentrate the liquid at the bottom.
5. Store the suspended plasmid at -20°C. The DNA is stable for at least one year from date of shipping when stored at -20°C.

RefSeq: [NM_014844.5](#)

RefSeq Size: 8703 bp

RefSeq ORF: 4236 bp

Locus ID: 9895

UniProt ID: [O15040](#)

Cytogenetics: 14q32.31

Domains: WD40, TECPR

MW: 153.8 kDa

Gene Summary: The protein encoded by this gene is a member of the tectonin beta-propeller repeat-containing (TECPR) family, and contains both TECPR and tryptophan-aspartic acid repeat (WD repeat) domains. This gene has been implicated in autophagy, as reduced expression levels of this gene have been associated with impaired autophagy. Recessive mutations in this gene have been associated with a hereditary form of spastic paraparesis (HSP). HSP is characterized by progressive spasticity and paralysis of the legs. There is also some evidence linking mutations in this gene with birdshot chorioretinopathy (BSCR), which results in inflammation of the choroid and retina. Alternative splicing results in multiple transcript variants encoding different isoforms. [provided by RefSeq, Aug 2015]