

Product datasheet for RC221905

ITLN2 (NM_080878) Human Tagged ORF Clone

Product data:

Product Type:	Expression Plasmids
Product Name:	ITLN2 (NM_080878) Human Tagged ORF Clone
Tag:	Myc-DDK
Symbol:	ITLN2
Synonyms:	HL-2; HL2
Mammalian Cell Selection:	Neomycin
Vector:	pCMV6-Entry (PS100001)
E. coli Selection:	Kanamycin (25 ug/mL)
ORF Nucleotide Sequence:	>RC221905 representing NM_080878 Red=Cloning site Blue=ORF Green=Tags(s)

TTTTGTAATACGACTCACTATAGGGCGGCCGGAATTCGTCGACTGGATCCGGTACCGAGGAGATCTGCC
GCC**CGATCGCC**

ATGCTGTCCATGCTGAGGACAATGACCAGACTCTGCTTCTGTTATTCTTCTCTGTGGCCACCAGTGGGT
GCAGTGCAGCAGCAGCCTCTTCTTTGAGATGCTCTCGAGGGAATTCGAAACCTGTGCCTTCTCCTTTTC
TTCCCTGCCTAGAAGCTGCAAAGAAATCAAGGAACGCTGCCATAGTGCAGGTGATGGCCTGTATTTTCTC
CGCACCAAGAATGGTGTGTCTACCAGACCTTCTGTGACATGACTTCTGGGGTGGCGGCTGGACCCTGG
TGCCAGCGTGCACGAGAATGACATGCGTGGGAAGTGCACGGTGGGTGATCGCTGGTCCAGTCAGCAGGG
CAACAAAGCAGACTACCCAGAGGGGATGGCAACTGGGCCAACTACAACACCTTTGGATCTGCAGAGGCG
GCCACGAGCGATGACTACAAGAACCCTGGCTACTACGACATCCAGGCCAAGGACCTGGGCATCTGGCATG
TGCCCAACAAGTCCCCATGCAGCATTGGAGAAACAGCGCCCTGCTGAGGTACCGCACCAACTGGCTT
CCTCCAGAGACTGGGACATAATCTGTTTGGCATCTACCAGAAATACCCAGTGAAATACAGATCAGGGAAA
TGTTGGAATGACAATGGCCAGCCATACCTGTGGTCTATGACTTTGGTGTGCTAAGAAGACTGCATCTT
ATTACTCACCGTATGGTCAACGGGAATTTGTTGCAGGATTCGTTTCAGTTCGGGTGTTTAATAACGAGAG
AGCAGCCAACGCCCTTTGTGCTGGGATAAAAGTTACTGGCTGTAACACTGAGCATCACTGCATCGGTGGA
GGAGGGTTCTTCCACAGGGCAAACCCGTCAGTGTGGGACTTCTCCGCTTTGACTGGGATGGATATG
GAACTCACGTAAAGAGCAGCTGCAGTCGGGAGATAACGGAGCGGCTGTACTCTTGTCTATAGA

ACGCGTACGCGGCCGCTCGAGCAGAAACTCATCTCAGAAGAGGATCTGGCAGCAAATGATATCCTGGATT
ACAAGGATGACGACGATAAGGTTTAA



[View online »](#)

Protein Sequence: >RC221905 representing NM_080878
Red=Cloning site Green=Tags(s)

MLSMRLRTMTRLCFLLFFSVATSGCSAAAASSLEMLSREFETCAFSSSLPRSCKEIKERCHSAGDGLYFL
 RTKNGVVYQTFCDMTSGGGGWTLVASVHENDMRGKCTVGDRWSSQQGNKADYPEGDGNWANYNTFGSAEA
 ATSDDYKNPGYYDIQAKDLGIWHPNKSMPMQHWRNSALLRYRTNTGFLQRLGHNLFGIYQKYPVKYRSGK
 CWNDNGPAIPVVYDFGDAKKTASYSPYQREFVAGFVQFRVFNNERAANALCAGIKVTGCNTEHHCIGG
 GGFFPQKPRQCGDFSAFDWDGYGTHVKSSCSREITEAAVLLFYR

TRTRPLEQKLISEEDLAANDILDYKDDDDKV

Chromatograms: https://cdn.origene.com/chromatograms/ja1468_h11.zip

Restriction Sites: SgfI-MluI

Cloning Scheme:



ACCN: NM_080878

ORF Size: 975 bp

OTI Disclaimer: The molecular sequence of this clone aligns with the gene accession number as a point of reference only. However, individual transcript sequences of the same gene can differ through naturally occurring variations (e.g. polymorphisms), each with its own valid existence. This clone is substantially in agreement with the reference, but a complete review of all prevailing variants is recommended prior to use. [More info](#)

OTI Annotation: This clone was engineered to express the complete ORF with an expression tag. Expression varies depending on the nature of the gene.

Components: The ORF clone is ion-exchange column purified and shipped in a 2D barcoded Matrix tube containing 10ug of transfection-ready, dried plasmid DNA (reconstitute with 100 ul of water).

Reconstitution Method:

1. Centrifuge at 5,000xg for 5min.
2. Carefully open the tube and add 100ul of sterile water to dissolve the DNA.
3. Close the tube and incubate for 10 minutes at room temperature.
4. Briefly vortex the tube and then do a quick spin (less than 5000xg) to concentrate the liquid at the bottom.
5. Store the suspended plasmid at -20°C. The DNA is stable for at least one year from date of shipping when stored at -20°C.

RefSeq: [NM_080878.3](#)

RefSeq Size: 1150 bp

RefSeq ORF: 978 bp

Locus ID: 142683

UniProt ID: [Q8WWU7](#)

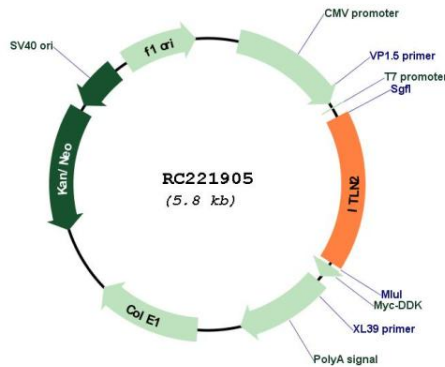
Cytogenetics: 1q23.3

Protein Families: Druggable Genome, Secreted Protein, Transmembrane

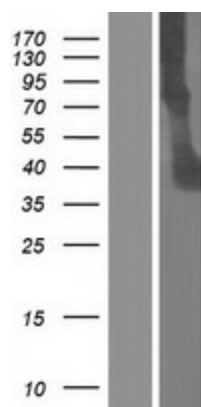
MW: 36 kDa

Gene Summary: May play a role in the defense system against pathogens.[UniProtKB/Swiss-Prot Function]

Product images:



Circular map for RC221905



Western blot validation of overexpression lysate (Cat# [LY408995]) using anti-DDK antibody (Cat# [TA50011-100]). Left: Cell lysates from untransfected HEK293T cells; Right: Cell lysates from HEK293T cells transfected with RC221905 using transfection reagent MegaTran 2.0 (Cat# [TT210002]).