

Product datasheet for RC221903

ARHGEF10 (NM_014629) Human Tagged ORF Clone

Product data:

Product Type:	Expression Plasmids
Product Name:	ARHGEF10 (NM_014629) Human Tagged ORF Clone
Tag:	Myc-DDK
Symbol:	ARHGEF10
Synonyms:	GEF10; SNCV
Mammalian Cell Selection:	Neomycin
Vector:	pCMV6-Entry (PS100001)
E. coli Selection:	Kanamycin (25 ug/mL)
ORF Nucleotide Sequence:	>RC221903 representing NM_014629 Red=Cloning site Blue=ORF Green=Tags(s)

TTTTGTAATACGACTCACTATAGGGCGGCCGGAATTCGTCGACTGGATCCGGTACCGAGGAGATCTGCC
GCC**CGATCGCC**

ATGGACCAGCGAGAGCCCTGCCTCCCGCTCCTGCAGAAAATGAAATGAAATATGATACCAATAATAATG
AAGAGGAAGAGGGAGAACAGTTCGATTTTGACAGTGGAGATGAAATCCCAGAAGCGGACAGACAGGCCCC
ATCCGCCCTGAGACAGGAGGTGCTGGAGCCAGTGAAGCCCTGCACCCACAGGAGGTGAGGATGGAGCT
GGAGCAGAAAACACCCAGTGGCAGAGCCTACTAAGCTGGTGTCTCCGATGAAAGTCAACCCATATTCTG
TCATCGACATCAGCCATTCCAGGAGGACCAGCCGCCACCCCGTGCCAGCGTGAGGAGGAGAATGT
GGGTCTCCATGTGCCCTGCGGGTACTTGGTGCCTGTACCCTGCGGCTATGCGGTGCCCTCCAACCTGCC
CTCCTGCTGCCCGCTACTCCAGCCCGGTATCATCTGCGCCACGTCCCTGGACGAAGAAGAAACACCAG
AAGTCACAGAAGATCGCCAGCCCAATTCTCTGAGTTCCGAGGAGCCTCCAACAGTGAAGATCAAGTCGG
TCGAGAGGACAGCGCACTTGCCCGCTGGGCCGAGACCCGCCAAACACAGCCTGGATGGAGAATCCAGAG
GAAGCAATTTACGATGACGTTCCAAGGGAAAACACTCAGACTCTGAACCAGATGAAATGATTTATGATGATG
TTGAGAATGGGGATGAAGGTGGAACAGCTCCTTGGAAATACGGATGGAGTTCGAGTGAATTTGAAAGTTA
CGAAGAGCAGAGTGACTCGGAGTGCAAGAATGGGATCCCAGGTCCTTCTGCGCAGCAACCACAAAAAG
CAACTTTCTCATGACCTAACCCGTTTAAAGGAGCACTATGAGAAAAGATGAGAGATTTGATGGCAAGCA
CGGTGGGCGTGGTGGAGATTTCAGCAGCTCAGGCAGAAGCATGAACTGAAGATGCAGAAGCTCGTGAAGGC
CGCAAGGACGGCACCAAGGACGGGCTGGAGAGGACCAGGGCAGCCGTGAAGAGGGGCCGCTCCTTCATC
AGGACCAAGTCTCTCATCGCACAGGATCACAGATCTTCTCTTGAGGAAGAACAGAATTTGTTCAATTGATG
TTGACTGCAAGCACCCGGAAGCCATCTTGACCCCGATGCCCGAGGGTTTATCTCAGCAGCAGGTTGTAAG
AAGATATACTGGTTTCAGTTGTGCAGAGTAAAAGAACTACGTAGATGCTCTTAAGAGGATTTGGAG
CAATATGAGAAGCCGCTGTCTGAGATGGAGCCAAAGGTTCTGAGTGAGAGGAAGCTGAAGACGGTGTCT
ACCGAGTCAAAGAGATCCTGCAGTGCCACTCGCTATTTTCAGATCGCGCTGCCAGCCGCTTTCCGAGTG
GGACTCCGTGAAATGATAGCGGATGTCTTCGTGGCTTCGTTTCTAAGTCCATGGTGTCTGGATGCATAC



AGTGAATATGTGAACAATTTTCAGCACAGCCGTGGCAGTCCTCAAGAAAACATGTGCCACAAAGCCCCTT
TTCTTGAATTTTTAAAGCAGGAACAGGAGGCCAGCCCCGATCGAACCACGCTCTACAGCCTGATGATGAA
GCCCATCCAGAGGTTCCACAGTTCATCCTCCTGCTCCAGGACATGCTGAAGAACACCTCCAAAGGCCAC
CCCACAGGCTGCCTCTTCAGATGGCCCTGACAGAGCTCGAAACACTAGCAGAGAAGTTAAATGAAAGAA
AGAGAGATGCTGATCAACGCTGTGAAGTGAAGCAAATAGCCAAAGCCATAAACGAAAGATACCTGAACAA
GCTTCTCAGCAGTGAAGCCGATACCTCATTGATCAGATGATATGATAGAAACAGTTTACAACGACAGA
GGAGAGATTGTTAAAACCAAAGAACGCCGAGTCTTCATGTTAAATGATGTGTTAATGTGTGCCACCGTCA
GCTCACGCCCTCTCATGACAGCCGTGTGATGAGCAGCCAGAGGTAAGTCTGCTGAAGTGGAGCGTTCCACT
GGGACATGTGGACGCCATCGAGTATGGCAGCAGCGCAGGCACGGGCGAGCACAGCAGGCACCTTGCCGTT
CACCCGCCGAGAGCCTGGCCGTGGTTGCTAACGCGAAACCAAACAAAGTTTACATGGGGCCAGGACAAC
TGTATCAAGATTTACAAAACCTTGTGCTGACTTAAATGTAATTGGCCAAATCACTCAGCTGATAGGAAA
CCTTAAAGGAACTATCAGAACTTAAACCAGTCAGTAGCCATGACTGGACATCAGGTTTACAAAGGCTT
ATTTTGAAGAAAGAAGATGAAATCAGAGCTGCGGACTGCTGCAGAATTCAGTTACAGCTTCCCGGGAAGC
AGGACAAATCTGGGCGACCGACGTTCTTACAGCTGTGTTCAATACGTTACCCCTGCCATCAAGGAGTC
CTGGGTCAACAGCTTACAGATGGCCAAGCTCGCCCTAGAAGAGGAGAACCACATGGGCTGGTTCTGTGTG
GAAGACGATGGGAATCACATTAAGGAGGAGAAGCATCCTCTCCTCGTCCGACACATGCCCGTGTGGTGG
CCAAGCAGCAGGAGTTCAAGATTGAATGTGCTGCTTATAACCCTGAACCTTACCTAAATAATGAAAGCCA
GCCAGATTCATTTCCACGGCACATGGTTTCTGTGGATCGGAAGTTGCACCCATCAATGGGTCAGATT
GCCATCGTCTCGTTTCAAATCCACTCCCAAAGTCATTGAGTGCCTTCAACGTGGAATCTCGCATCCTGT
GCATGTGTACGTTCCCGTCGAGGAGAAGCGCAGAGAGCCTGGGGCACCCCGGACCCCGAGACCCCGGC
CGTGAGAGCTTCTGATGTCCCACGATCTGTGTAGGGACGGAGGGAAGCATTTCATTTATAAAAGC
AGTCAAGGCTCCAAGAAAGTGAAGTTCAGACTTCAGCACTTTTTACTCCTGAGAAGTCCACAGTCATGAGCCTGG
CTTGCAGTCTCAGAGCCTGTACGCTGGCTGGTCAACGGGGCAGTCGCCAGTACGCCAGAGCCCGAGA
TGGATCCTGGGATTCAGAACCTCAAAAAGTGATCAAGTTAGGCGTCTACCAGTTAGAAGTCTACTCATG
ATGGAAGACACGTTGTGGGCGGCTTCCGGAGGTCAAGTCTTCATCATCAGTGTGGAGACTCATGCTGTAG
AGGGTCAGCTGGAGGCCACCAGGAGGAAGGCATGGTGTCTCCACATGGCCGTGTCCGGCGTCGGGAT
CTGGATTGCCTTACCTCAGGTCACGCTCCGCTTTTTTACACGGAACTCTCAAGCACCTGCAGGAC
ATCAACATCGCCACCCCTGTTCAACATGCTGCCAGGGCACCAGCGGCTGTCGGTGACGAGCCTGCTCG
TCTGCCACGATTGCTGATGGTCCGACACGCTGGGAGTCTCGTGGCCCTGCCGTTCCACGCTGCA
AGGGATCCCAAAGTGACCGGAAGAGGCATGGTCTCTACCATGCACACAACAGTCTGTCAAATTCATC
GTCTGGCCACGGCTCTGCACGAGAAAGACAAGGACAAATCCAGGGACAGCCTGGCTCCTGGCCCCGAGC
CTCAGGACGAAGACCAGAAGGACGCACTCCGAGTGGAGGAGCTGGTTCACTCTGAGCCAGGGTGACCC
TGACGCAGCCATCTGGTTGGGAGATTCCGTTGGGATCGATGACTCAGAAAAGCGACCTGTCCTCCTCATCT
GGGTCCCTGAGCTTGTCTCACGGCTCCAGCTCTCTAGAGCACAGATCAGAGGACAGCACCATCTATGATC
TCCTGAAGGATCCTGTCTCGCTGAGAAGCAAAGCACGCCGGGCCAAGAAAGCCAAGGCCAGCTCGGGCT
GGTGGTCTGTGGAGGGCAGGGCCACCGCCGGGTGCACAGGAAGGCCCGGCAGCCCCACCAGGAAGAGCTG
CGCCGACCGTCATGGTCTGGCAGATCCCTCTGCTGAATATA

ACGCGTACGCGGCCGCTCGAGCAGAACTCATCTCAGAAGAGGATCTGGCAGCAAATGATATCCTGGATT
ACAAGGATGACGACGATAAGGTTTAA

Protein Sequence: >RC221903 representing NM_014629
Red=Cloning site Green=Tags(s)

```

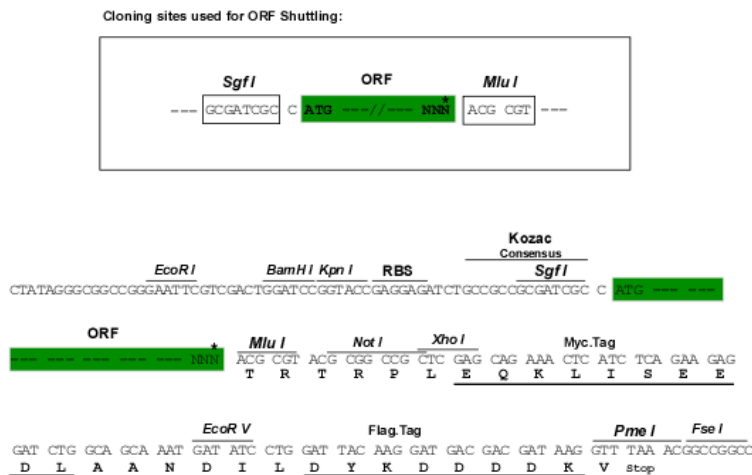
MDQREPLPPAPAENEMKYDTNNNEEEEGEQFDFDSGDEIPEADRQAPSAPETGGAGASEAPAPTGGEDGA
GAETTPVAEPTKLVLPKVNYPYSVIDITPFQEDQPPTVPVSAEEENVGLHVPCGYLVPVPCGYAVPSNLP
LLLPAYSSPVIICATSLDEEETPEVTEDRQPNLSSEEPTSEDQVGREDSALARWAADPANTAWMENPE
EAIYDDVPRENSDSEPEMIYDDVENGDEGGNSLEYGWSSSEFESYEEQSDSECKNGIPRSFLRSNHKK
QLSHDLTRLKEHYEKKMRDLMASTVGVVEIQQLRQKHELKMQKLVKAAKDGTKDGLERTRAAVKGRSFI
RTKSLIAQDHRSSLEEEQNLFIQVDCVCKHPEAILTPMPEGLSQQQVVRRYILGSVVDSEKNYVDALKRILE
QYEKPLSEMEPKVLSEKRLKTVFYRVEILQCHSLFQIALASRVSEWDSVEMIGDVFVASFKSMVLDAY
SEYVNNFSTAVAVLKTKCATKPAFLEFLKQEAEASPDRTTLYSLMMKPIQRFPQFILLQDMLKNTSKGH
PDRLPLQMALTELETAEKLNKRKRDADQRCEVKQIAKAINERYLNKLLSSGSRYLIRSDDMIETVYNDR
GEIVKTKERRVFMNDVLMCATVSSRPSHDSRVMSQRYLLKWSVPLGHVDAIEYGSSAGTGEHSRHLAV
HPPESLAVVANAKPNKVYMGPGQLYQDLQNLHDLNVIGQITQLIGNLKGNYNLQNSVAHDWTSGLQRL
ILKKEDEIRAADCCRIQLQLPGKQDKSGRPTFFTAVFNTFPAIKESWVNSLQMAKLALAEENHMGWFCV
EDDGNHIKKEKHPPLLVGHPVMVAKQQEFKIECAAYNPEPYLNNEEQPDSFSTAHLGFLWIGSCTHQMQI
AIVSFQNSTPKVIECFNVESRILCMLYVPVEEKRRREGAPPDPETPAVRASDVPTICVGTGEEGSIYKS
SQGSKKVRQLQHFFTPKSTVMSLACTSQSLYAGLVNGAVASYARAPDGSWDSEPKVIKLVLPVRSLLM
MEDTLWAASGGQVFIIISVETHAVEGQLEAHQEEGMVISHMAVSGVGIWIAFTSGSTLRLFHTETLKLQD
INIATPVHNMLPGHQRLSVTSLLVCHGLLMVGTSLGVLVALPVPRLQGIPKVTGRGMVSYHAHNSPVKFI
VLATALHEKDKDKSRDSLAPGPEPQDEQKDALPSGGAGSSLQGDPAAIWLGDLSGSMQKSDLSSSS
GSLSLSHGSSSLEHRSEDSTIYDLLKDPVSLRSKARRAKKAKASSALVCCGGQGHRRVHRKARQPHQEEL
APTVMVWQIPLLNI
    
```

TRTRPLEQKLISEEDLAANDILDYKDDDDKV

Chromatograms: https://cdn.origene.com/chromatograms/mk8040_b02.zip

Restriction Sites: SgfI-MluI

Cloning Scheme:



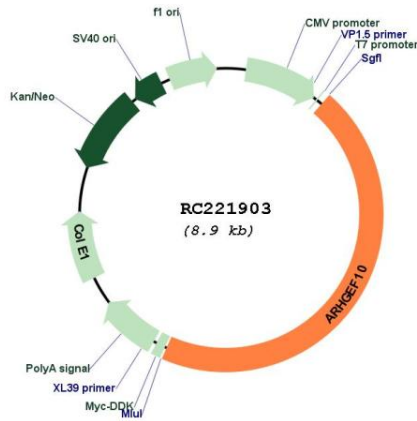
* The last codon before the Stop codon of the ORF

ACCN: NM_014629

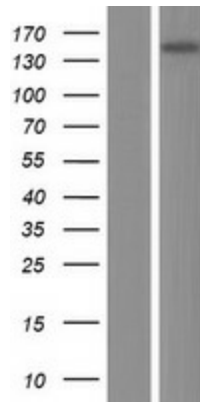
ORF Size: 4032 bp

OTI Disclaimer:	The molecular sequence of this clone aligns with the gene accession number as a point of reference only. However, individual transcript sequences of the same gene can differ through naturally occurring variations (e.g. polymorphisms), each with its own valid existence. This clone is substantially in agreement with the reference, but a complete review of all prevailing variants is recommended prior to use. More info
OTI Annotation:	This clone was engineered to express the complete ORF with an expression tag. Expression varies depending on the nature of the gene.
Components:	The ORF clone is ion-exchange column purified and shipped in a 2D barcoded Matrix tube containing 10ug of transfection-ready, dried plasmid DNA (reconstitute with 100 ul of water).
Reconstitution Method:	<ol style="list-style-type: none">1. Centrifuge at 5,000xg for 5min.2. Carefully open the tube and add 100ul of sterile water to dissolve the DNA.3. Close the tube and incubate for 10 minutes at room temperature.4. Briefly vortex the tube and then do a quick spin (less than 5000xg) to concentrate the liquid at the bottom.5. Store the suspended plasmid at -20°C. The DNA is stable for at least one year from date of shipping when stored at -20°C.
RefSeq:	NM_014629.4
RefSeq Size:	5595 bp
RefSeq ORF:	4035 bp
Locus ID:	9639
UniProt ID:	O15013
Cytogenetics:	8p23.3
Domains:	RhoGEF
Protein Families:	Druggable Genome
MW:	148.7 kDa
Gene Summary:	This gene encodes a Rho guanine nucleotide exchange factor (GEF). Rho GEFs regulate the activity of small Rho GTPases by stimulating the exchange of guanine diphosphate (GDP) for guanine triphosphate (GTP) and may play a role in neural morphogenesis. Mutations in this gene are associated with slowed nerve conduction velocity (SNCV). Alternative splicing results in multiple transcript variants. [provided by RefSeq, Apr 2015]

Product images:



Circular map for RC221903



Western blot validation of overexpression lysate (Cat# [LY415149]) using anti-DDK antibody (Cat# [TA50011-100]). Left: Cell lysates from untransfected HEK293T cells; Right: Cell lysates from HEK293T cells transfected with RC221903 using transfection reagent MegaTran 2.0 (Cat# [TT210002]).