

Product datasheet for RC221902

LIN7 (LIN7A) (NM_004664) Human Tagged ORF Clone

Product data:

Product Type:	Expression Plasmids
Product Name:	LIN7 (LIN7A) (NM_004664) Human Tagged ORF Clone
Tag:	Myc-DDK
Symbol:	LIN7
Synonyms:	LIN-7A; LIN7; MALS-1; MALS1; TIP-33; VEL11
Mammalian Cell Selection:	Neomycin
Vector:	pCMV6-Entry (PS100001)
E. coli Selection:	Kanamycin (25 ug/mL)
ORF Nucleotide Sequence:	>RC221902 ORF sequence Red=Cloning site Blue=ORF Green=Tags(s)

TTTTGTAATACGACTCACTATAGGGCGCCGGGAATTCGTCGACTGGATCCGGTACCGAGGAGATCTGCC
GCC**CGATCGCC**

ATGCTGAAGCCGAGCGTCACTTCGGCTCCACGGCAGACATGGCGACATTGACAGTGGTCCAGCCGCTCA
CCCTGGACAGAGATGTTGCAAGCAATTGAATTACTGGAAAACTACAGGAATCTGGAGAAGTACCAGT
GCACAAGCTACAATCCCTCAAAAAGTGCTTCAGAGTGAGTTTTGTACAGCTATTCGAGAGGTGTATCAA
TATATGCATGAAACGATAACTGTTAATGGCTGTCCGAATTCGTGCGAGGGCAACAGCAAAGGCAACAG
TTGCAGCTTTTGCAGCTAGTGAAGGCCACTCCACCCCTCGAGTAGTTGAACTGCCAAAGACTGATGAAGG
CCTTGGTTTTAATGTGATGGGAGGAAAGGAGCAAATTCCTCCATTTATCTCTCGCATAATTCCTGGA
GGGTGGCTGAAAGACACGGAGGCTCAAAGAGGAGACCAGCTGCTATCAGTGAACGGAGTGAGTGTGG
AAGGAGAACACCATGAGAAAGCTGTGGAAGTACTCAAGGCTGCTAAAGACAGCGTCAAGCTGGTGGTGGC
ATACACCCAAAAGTTCTGGAAGAAATGGAGGCTCGCTTTGAAAAGCTACGAACAGCCAGGCGTCGGCAG
CAGCAGCAATTGCTAATTCAGCAGCAGCAACAGCAGCAGCAGCAACAAACACAACAAAACCATGTCA

ACGCGTACGCGGGCCGCTCGAGCAGAAACTCATCTCAGAAGAGGATCTGGCAGCAAATGATATCCTGGATT
ACAAGGATGACGACGATAAGGTTTAA



[View online »](#)

Protein Sequence: >RC221902 protein sequence
 Red=Cloning site Green=Tags(s)
 MLKPSVTSAPTADMATLTVVQPLTLDRDVARAIELLEKLQESGEVPVHKLQSLKKVLQSEFCTAIREVYQ
 YMHETITVNGCPEFRARATAKATVAFAASEGHSHPRVVELPKTDEGLGFNVMGGKEQNSPIYISRIPG
 GVAERHGGLKRGDQLLSVNGVSVEGEHHEKAVELLKAAKDSVKLVVRYTPKVLEEMEARFEKLRARRRQ
 QQQLLIQQQQQQQQQTQNHMS

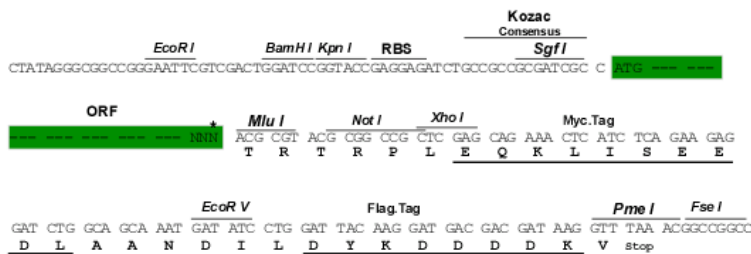
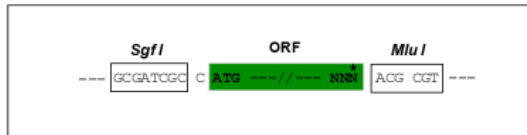
TRTRPLEQKLISEEDLAANDILDYKDDDDKV

Chromatograms: https://cdn.origene.com/chromatograms/mk6453_c03.zip

Restriction Sites: SgfI-MluI

Cloning Scheme:

Cloning sites used for ORF Shuttling:



* The last codon before the Stop codon of the ORF

ACCN: NM_004664

ORF Size: 699 bp

OTI Disclaimer: The molecular sequence of this clone aligns with the gene accession number as a point of reference only. However, individual transcript sequences of the same gene can differ through naturally occurring variations (e.g. polymorphisms), each with its own valid existence. This clone is substantially in agreement with the reference, but a complete review of all prevailing variants is recommended prior to use. [More info](#)

OTI Annotation: This clone was engineered to express the complete ORF with an expression tag. Expression varies depending on the nature of the gene.

Components: The ORF clone is ion-exchange column purified and shipped in a 2D barcoded Matrix tube containing 10ug of transfection-ready, dried plasmid DNA (reconstitute with 100 ul of water).

Reconstitution Method:

1. Centrifuge at 5,000xg for 5min.
2. Carefully open the tube and add 100ul of sterile water to dissolve the DNA.
3. Close the tube and incubate for 10 minutes at room temperature.
4. Briefly vortex the tube and then do a quick spin (less than 5000xg) to concentrate the liquid at the bottom.
5. Store the suspended plasmid at -20°C. The DNA is stable for at least one year from date of shipping when stored at -20°C.

RefSeq: [NM_004664.3](#)

RefSeq Size: 1235 bp

RefSeq ORF: 702 bp

Locus ID: 8825

UniProt ID: [O14910](#)

Cytogenetics: 12q21.31

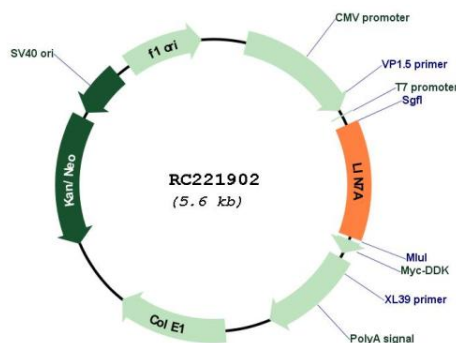
Domains: PDZ, L27

Protein Families: Druggable Genome

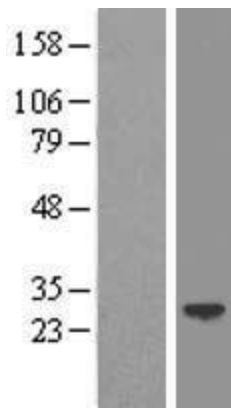
MW: 26 kDa

Gene Summary: The protein encoded by this gene is involved in generating and maintaining the asymmetric distribution of channels and receptors at the cell membrane. The encoded protein also is required for the localization of some specific channels and can be part of a protein complex that couples synaptic vesicle exocytosis to cell adhesion in the brain. [provided by RefSeq, May 2016]

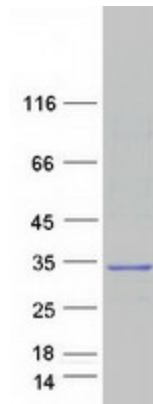
Product images:



Circular map for RC221902



Western blot validation of overexpression lysate (Cat# [LY417838]) using anti-DDK antibody (Cat# [TA50011-100]). Left: Cell lysates from untransfected HEK293T cells; Right: Cell lysates from HEK293T cells transfected with RC221902 using transfection reagent MegaTran 2.0 (Cat# [TT210002]).



Coomassie blue staining of purified LIN7A protein (Cat# [TP321902]). The protein was produced from HEK293T cells transfected with LIN7A cDNA clone (Cat# RC221902) using MegaTran 2.0 (Cat# [TT210002]).