

## Product datasheet for RC221901

### CLEC17A (NM\_207390) Human Tagged ORF Clone

#### Product data:

Product Type:	Expression Plasmids
Product Name:	CLEC17A (NM_207390) Human Tagged ORF Clone
Tag:	Myc-DDK
Symbol:	CLEC17A
Mammalian Cell Selection:	Neomycin
Vector:	pCMV6-Entry (PS100001)
E. coli Selection:	Kanamycin (25 ug/mL)
ORF Nucleotide Sequence:	>RC221901 representing NM_207390 Red=Cloning site Blue=ORF Green=Tags(s)

TTTTGTAATACGACTCACTATAGGGCGGCCGGAATTCGTCGACTGGATCCGGTACCGAGGAGATCTGCCGCC**CGATCGCC**

ATGCATAATCTGTATTCCATCACTGGGTACCCGGACCCACCAGGGACCATGGAGGAGGAGGAGGAGGATG  
ATGACTATGAGAACTCAACACCTCCCTACAAGGACCTTCCTCCCAAGCCAGGGACCATGGAGGAGGAGGA  
GGAGGATGATGACTATGAGAACTCAACACCTCCCTACAAGGACCTTCCTCCCAAGCCAGGGACCATGGAG  
GAGGAGGAGGAGGATGATGACTATGAGAACTCAACACCTCCCTACAAGGACCTTCCTCCCAAGCCAGGTT  
CAAGTGCTCCACCAAGACCTCCAAGGGCAGCAAAGGAAACAGAGAAACCCCACTTCCTTGCAAGCCCGG  
GAACATGACAGGCTGGACCTCGCCGCTGTCACTGTCCACCTCCTCAACTGGCTGTGAATCCTTGAGCCT  
TCTCCATTGCAGCCATCCCTGGCCGCAACTCCAGTCCCTGGCTCAATCAGAGGTCTGGAGTCTGGCT  
GCTGCCAGAAGAGGTGGATGGTGTACCTGTGTCTGCTGGTGGTACTTCCTGTTCTGGCTGCCTTGG  
TCTCACTGTGACCCTGATTAAGTACCAGGAGTTGATGGAAGAAGTGAATGTTAAGCTTTCAGCAGATG  
ACGTGGCGAACAATATGACTGGCATGGCAGGGCTAGCTGGCCTGAAGCATGACATTGCCCGTGAAGAG  
CTGACCAACCAGTCCCTGGTGAACCTTTGGGGCTTATTAGACTGCCCGCAATTACCTGTCCTGAAGG  
CTGGCTGCCCTTTGAGGGCAAGTGTACTACTTCTCCCAAGCACCAAGTCATGGGATGAGGCCCGGATG  
TTCTGCCAGGAGAATTACTCTCACTTGGTCATCATCAATAGCTTTGCTGAGCACCTTCTGGGAGCCAGAG  
GAACCCAA

**ACGCGT**ACGCGGCCGCTCGAGCAGAAACTCATCTCAGAAGAGGATCTGGCAGCAAATGATATCCTGGATT  
ACAAGGATGACGACGATAAGGTTTAA



[View online »](#)

**Protein Sequence:** >RC221901 representing NM\_207390  
Red=Cloning site Green=Tags(s)

MHNLYSITGYDPPPGTMEEEEEEDDYENSTPPYKDLPPKPGTMEEEEEEDDYENSTPPYKDLPPKPGTME  
 EEEEEEDDYENSTPPYKDLPPKPGSSAPRPPRAAKETEKPLPCKPRNMTGLDLAAVTCPPPQLAVNLEP  
 SPLQPSLAATVPVWLNQRSGGPGCCQKRWMVYLCLLVVTSFLGLGLTVTLIKYQELMEELRMLSFQQM  
 TWRTNMTGMAGLAGLKHDIAVRADTNQSLVELWGLLDCRRITCPEGWLPFEGKCYFFSPSTKSWDEARM  
 FCQENYSHLVIINSFAEHLLGARGTQ

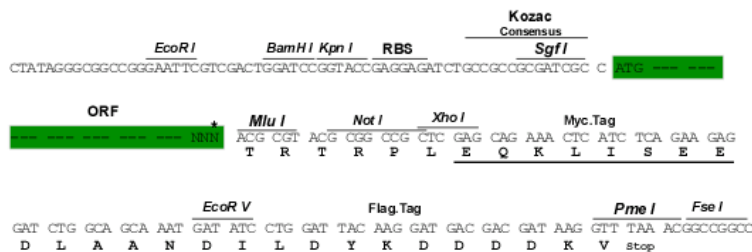
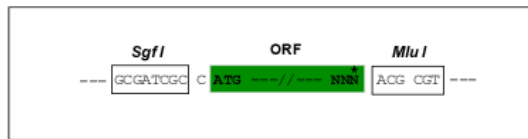
TRTRPLEQKLISEEDLAANDILDYKDDDDKV

**Chromatograms:** [https://cdn.origene.com/chromatograms/mk8014\\_c04.zip](https://cdn.origene.com/chromatograms/mk8014_c04.zip)

**Restriction Sites:** SgfI-MluI

**Cloning Scheme:**

Cloning sites used for ORF Shuttling:



\* The last codon before the Stop codon of the ORF

**ACCN:** NM\_207390

**ORF Size:** 918 bp

**OTI Disclaimer:** The molecular sequence of this clone aligns with the gene accession number as a point of reference only. However, individual transcript sequences of the same gene can differ through naturally occurring variations (e.g. polymorphisms), each with its own valid existence. This clone is substantially in agreement with the reference, but a complete review of all prevailing variants is recommended prior to use. [More info](#)

**OTI Annotation:** This clone was engineered to express the complete ORF with an expression tag. Expression varies depending on the nature of the gene.

**Components:** The ORF clone is ion-exchange column purified and shipped in a 2D barcoded Matrix tube containing 10ug of transfection-ready, dried plasmid DNA (reconstitute with 100 ul of water).

**Reconstitution Method:**

1. Centrifuge at 5,000xg for 5min.
2. Carefully open the tube and add 100ul of sterile water to dissolve the DNA.
3. Close the tube and incubate for 10 minutes at room temperature.
4. Briefly vortex the tube and then do a quick spin (less than 5000xg) to concentrate the liquid at the bottom.
5. Store the suspended plasmid at -20°C. The DNA is stable for at least one year from date of shipping when stored at -20°C.

**RefSeq:** [NM\\_207390.3](#), [NP\\_997273.3](#)

**RefSeq Size:** 2090 bp

**RefSeq ORF:** 921 bp

**Locus ID:** 388512

**UniProt ID:** [Q6ZS10](#)

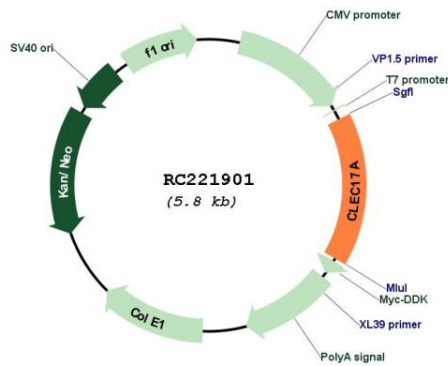
**Cytogenetics:** 19p13.12

**Protein Families:** Transmembrane

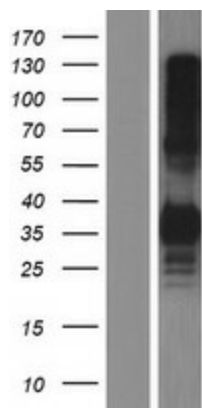
**MW:** 32.2 kDa

**Gene Summary:** Cell surface receptor which may be involved in carbohydrate-mediated communication between cells in the germinal center. Binds glycans with terminal alpha-linked mannose or fucose residues.[UniProtKB/Swiss-Prot Function]

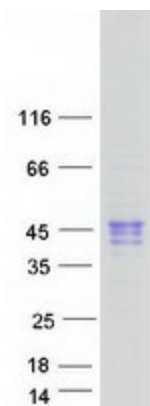
**Product images:**



Circular map for RC221901



Western blot validation of overexpression lysate (Cat# [LY404001]) using anti-DDK antibody (Cat# [TA50011-100]). Left: Cell lysates from untransfected HEK293T cells; Right: Cell lysates from HEK293T cells transfected with RC221901 using transfection reagent MegaTran 2.0 (Cat# [TT210002]).



Coomassie blue staining of purified CLEC17A protein (Cat# [TP321901]). The protein was produced from HEK293T cells transfected with CLEC17A cDNA clone (Cat# RC221901) using MegaTran 2.0 (Cat# [TT210002]).