

## Product datasheet for **RC221900**

### **SFTPA2B (NM\_006926) Human Tagged ORF Clone**

#### Product data:

**Product Type:** Expression Plasmids  
**Product Name:** SFTPA2B (NM\_006926) Human Tagged ORF Clone  
**Tag:** Myc-DDK  
**Symbol:** SFTPA2B  
**Synonyms:** AC068139.3; SFTPA2; SP-2A; SP-A1; SP-A2; SPAll  
**Mammalian Cell Selection:** Neomycin  
**Vector:** pCMV6-Entry (PS100001)  
**E. coli Selection:** Kanamycin (25 ug/mL)  
**ORF Nucleotide Sequence:** >RC221900 ORF sequence  
**Red=Cloning site Blue=ORF Green=Tags(s)**

TTTTGTAATACGACTCACTATAGGGCGGCCGGAATTCGTCGACTGGATCCGGTACCGAGGAGATCTGCC  
GCC**CGATCGCC**

ATGTGGCTGTGCCCTCTGGCCCTCACCCCTCATCTTGATGGCAGCCTCTGGTGCTGCGTGCGAAGTGAAGG  
ACGTTTGTGTGGAAGCCCTGGTATCCCCGGCACTCTGGATCCCACGGCCTGCCAGGCAGGGACGGGAG  
AGATGGTGTCAAAGGAGACCCTGGCCCTCAGGCCCATGGGTCCGCCTGGAGAAACACCATGTCCTCTCT  
GGGAATAATGGGCTGCCTGGAGCCCTGGTGTCCCTGGAGAGCGTGGAGAGAAGGGGGAGGCTGGCGAGA  
GAGGCCCTCAGGGCTTCCAGCTCATCTAGATGAGGAGCTCCAAGCCACACTCCAGACTTCAGACATCA  
AATCCTGCAGACAAGGGGAGCCCTCAGTCTGCAGGGCTCCATAATGACAGTAGGAGAGAAGGTCTTCTCC  
AGCAATGGGCAGTCCATCACTTTTGTGATGCCATTCAGGAGCATGTGCCAGAGCAGGCGGCCGATTGCTG  
TCCCAAGGAATCCAGAGGAAAATGAGGCCATTGCAAGCTTCGTGAAGAAGTACAACACATATGCCTATGT  
AGGCCTGACTGAGGGTCCCAGCCCTGGAGACTTCCGCTACTCAGACGGGACCCCTGTAACTACACCAAC  
TGGTACCGAGGGGAGCCCGAGGTCGGGAAAAGAGCAGTGTGTGGAGATGTACACAGATGGGCAGTGGA  
ATGACAGGAAGTGCCTGTACTCCCGACTGACCATCTGTGAGTTC

**ACGCGT**ACGCGGCCGCTCGAGCAGAACTCATCTCAGAAGAGGATCTGGCAGCAAATGATATCCTGGATT  
ACAAGGATGACGACGATAAGGTTTAA



[View online »](#)



**Reconstitution Method:**

1. Centrifuge at 5,000xg for 5min.
2. Carefully open the tube and add 100ul of sterile water to dissolve the DNA.
3. Close the tube and incubate for 10 minutes at room temperature.
4. Briefly vortex the tube and then do a quick spin (less than 5000xg) to concentrate the liquid at the bottom.
5. Store the suspended plasmid at -20°C. The DNA is stable for at least one year from date of shipping when stored at -20°C.

**RefSeq:** [NM\\_006926.1](#), [NP\\_008857.1](#)

**RefSeq Size:** 2190 bp

**RefSeq ORF:** 746 bp

**Locus ID:** 6436

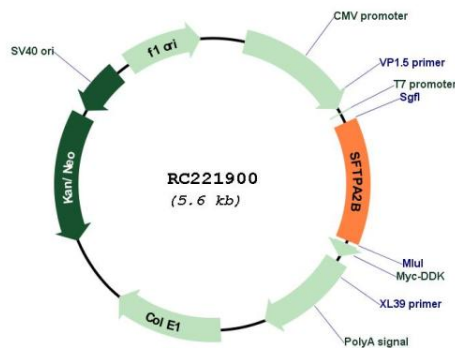
**Cytogenetics:** 10q22.3

**Protein Families:** Secreted Protein

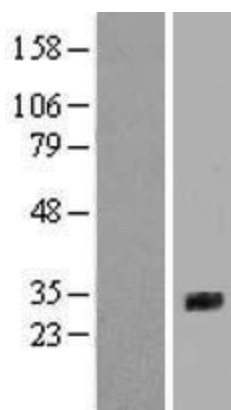
**MW:** 26.2 kDa

**Gene Summary:** DISCONTINUED: This record has been withdrawn by the HUGO Gene Nomenclature Committee (HGNC), and it has been determined that the sequence is redundant with SFTPA2 (GeneID:729238) in the GRCh37.1 reference assembly.

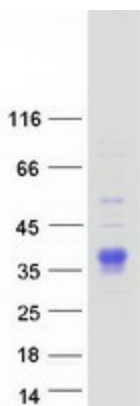
**Product images:**



Circular map for RC221900



Western blot validation of overexpression lysate (Cat# [LY416318]) using anti-DDK antibody (Cat# [TA50011-100]). Left: Cell lysates from untransfected HEK293T cells; Right: Cell lysates from HEK293T cells transfected with RC221900 using transfection reagent MegaTran 2.0 (Cat# [TT210002]).



Coomassie blue staining of purified SFTPA2B protein (Cat# [TP321900]). The protein was produced from HEK293T cells transfected with SFTPA2B cDNA clone (Cat# RC221900) using MegaTran 2.0 (Cat# [TT210002]).