

Product datasheet for **RC221893L3V**

Dectin 1 (CLEC7A) (NM_197947) Human Tagged ORF Clone Lentiviral Particle

Product data:

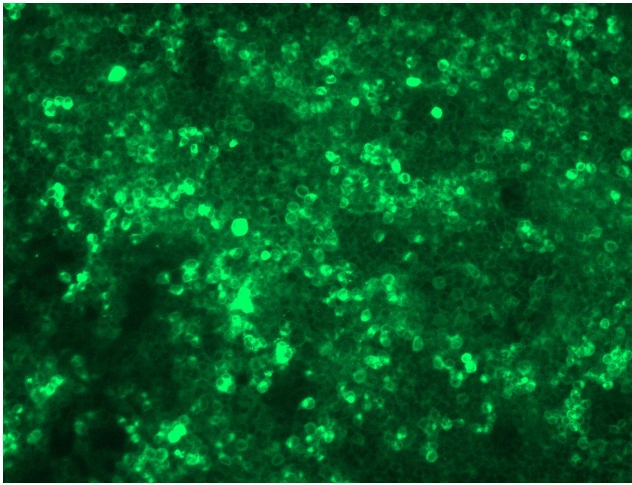
Product Type:	Lentiviral Particles
Product Name:	Dectin 1 (CLEC7A) (NM_197947) Human Tagged ORF Clone Lentiviral Particle
Symbol:	Dectin 1
Synonyms:	BGR; CANDF4; CD369; CLECSF12; DECTIN1; SCARE2
Mammalian Cell Selection:	Puromycin
Vector:	pLenti-C-Myc-DDK-P2A-Puro (PS100092)
Tag:	Myc-DDK
ACCN:	NM_197947
ORF Size:	741 bp
ORF Nucleotide Sequence:	The ORF insert of this clone is exactly the same as(RC221893).
OTI Disclaimer:	The molecular sequence of this clone aligns with the gene accession number as a point of reference only. However, individual transcript sequences of the same gene can differ through naturally occurring variations (e.g. polymorphisms), each with its own valid existence. This clone is substantially in agreement with the reference, but a complete review of all prevailing variants is recommended prior to use. More info
OTI Annotation:	This clone was engineered to express the complete ORF with an expression tag. Expression varies depending on the nature of the gene.
RefSeq:	NM_197947.1
RefSeq Size:	2592 bp
RefSeq ORF:	744 bp
Locus ID:	64581
UniProt ID:	Q9BXN2
Cytogenetics:	12p13.2
Protein Families:	Druggable Genome, Transmembrane
MW:	27.4 kDa



[View online »](#)

Gene Summary:

This gene encodes a member of the C-type lectin/C-type lectin-like domain (CTL/CTLD) superfamily. The encoded glycoprotein is a small type II membrane receptor with an extracellular C-type lectin-like domain fold and a cytoplasmic domain with an immunoreceptor tyrosine-based activation motif. It functions as a pattern-recognition receptor that recognizes a variety of beta-1,3-linked and beta-1,6-linked glucans from fungi and plants, and in this way plays a role in innate immune response. Alternate transcriptional splice variants, encoding different isoforms, have been characterized. This gene is closely linked to other CTL/CTLD superfamily members on chromosome 12p13 in the natural killer gene complex region. [provided by RefSeq, Jul 2008]

Product images:

[RC221893L3] was used to prepare Lentiviral particles using [TR30037] packaging kit. HEK293T cells were transduced with RC221893L3V particle to overexpress human CLEC7A-Myc-DDK fusion protein.