

Product datasheet for RC221893

Dectin 1 (CLEC7A) (NM_197947) Human Tagged ORF Clone

Product data:

Product Type:	Expression Plasmids
Product Name:	Dectin 1 (CLEC7A) (NM_197947) Human Tagged ORF Clone
Tag:	Myc-DDK
Symbol:	Dectin 1
Synonyms:	BGR; CANDF4; CD369; CLECSF12; DECTIN1; SCARE2
Mammalian Cell Selection:	Neomycin
Vector:	pCMV6-Entry (PS100001)
E. coli Selection:	Kanamycin (25 ug/mL)
ORF Nucleotide Sequence:	>RC221893 representing NM_197947 Red=Cloning site Blue=ORF Green=Tags(s)

TTTTGTAATACGACTCACTATAGGGCGCCGGAATTCGTCGACTGGATCCGGTACCGAGGAGATCTGCC
GCC**CGATCGCC**

ATGGAATATCATCCTGATTTAGAAAATTTGGATGAAGATGGATATACTCAATTACACTTCGACTCTCAA
GCAATACCAGGATAGCTGTTGTTTCAGAGAAAGGATCGTGTGCTGCATCTCCTTGGCGCCTCATTGC
TGTAATTTGGGAATCCTATGCTTGGTAATACTGGTGATAGCTGTGGTCTGGTACCATGGCTATTTGG
AGATCCAATTCAGGAAGCAACACATTGGAGAATGGCTACTTTCTATCAAGAAATAAAGAGAACCACAGTC
AACCCACACAATCATCTTTAGAAGACAGTGTACTCTACCAAAGCTGTCAAACCACAGGGTTCTTTC
CAGCCCTTGCTCCTAATTGGATTATATGAGAAGAGCTGTTATCTATTCAGCATGCTACTAAATTC
TGGGATGGAAGTAAAAGACAATGCTGGCAACTGGGCTCTAATCTCCTAAAGATAGACAGCTCAAATGAAT
TGGGATTTATAGTAAAACAAGTGTCTTCCCAACCTGATAATTCATTTGGATAGGCCTTTCTCGGCCCA
GACTGAGGTACCATGGCTCTGGGAGGATGGATCAACATTCTTCTAACTTATTTAGATCAGAACCACA
GCTACCCAAGAAAACCATCTCCAAATTGTGTATGGATTACGTGTCAAGTGCAGTCAATTTATGACCAACTGTGA
GTGTGCCCTCATATAGTATTTGTGAGAAGAAGTTTCAATG

ACGCGTACGCGGCCGCTCGAGCAGAACTCATCTCAGAAGAGGATCTGGCAGCAAATGATATCCTGGATT
ACAAGGATGACGACGATAAGGTTTAA



[View online »](#)

Protein Sequence: >RC221893 representing NM_197947
Red=Cloning site Green=Tags(s)

MEYHPDLENLDEDGYQLHFDSQSNTRIAVVSEKGSAAAPPWRLIAVILGILCLVILVIAVVLGTMAIW
 RNSNGSNTLENGYFLSRNKENHSQPTQSSLEDSVTPTKAVKTTGVLSSPCPPNWIIYEKSCYLFMSLNS
 WDGSKRQCWQLGSNLLKIDSSNELGFIVKQVSSQPDNSFWIGLSRPQTEVPWLWEDGSTFSSNLFQIRTT
 ATQENPSPNCVWIHVSVIYDQLCSVPSYSICEKKFSM

TRTRPLEQKLISEEDLAANDILDYKDDDDKV

Chromatograms: https://cdn.origene.com/chromatograms/mg3289_g01.zip

Restriction Sites: SgfI-MluI

Cloning Scheme:



ACCN: NM_197947

ORF Size: 741 bp

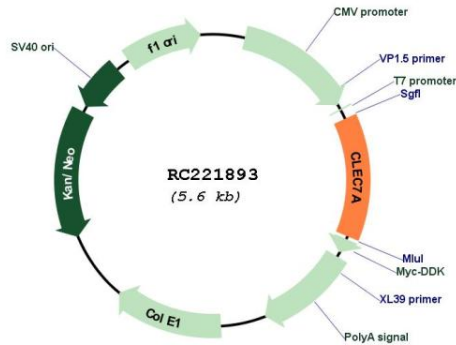
OTI Disclaimer: Due to the inherent nature of this plasmid, standard methods to replicate additional amounts of DNA in *E. coli* are highly likely to result in mutations and/or rearrangements. Therefore, OriGene does not guarantee the capability to replicate this plasmid DNA. Additional amounts of DNA can be purchased from OriGene with batch-specific, full-sequence verification at a reduced cost. Please contact our customer care team at custsupport@origene.com or by calling 301.340.3188 option 3 for pricing and delivery.

The molecular sequence of this clone aligns with the gene accession number as a point of reference only. However, individual transcript sequences of the same gene can differ through naturally occurring variations (e.g. polymorphisms), each with its own valid existence. This clone is substantially in agreement with the reference, but a complete review of all prevailing variants is recommended prior to use. [More info](#)

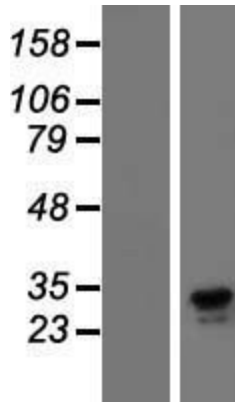
OTI Annotation: This clone was engineered to express the complete ORF with an expression tag. Expression varies depending on the nature of the gene.

Components:	The ORF clone is ion-exchange column purified and shipped in a 2D barcoded Matrix tube containing 10ug of transfection-ready, dried plasmid DNA (reconstitute with 100 ul of water).
Reconstitution Method:	<ol style="list-style-type: none">1. Centrifuge at 5,000xg for 5min.2. Carefully open the tube and add 100ul of sterile water to dissolve the DNA.3. Close the tube and incubate for 10 minutes at room temperature.4. Briefly vortex the tube and then do a quick spin (less than 5000xg) to concentrate the liquid at the bottom.5. Store the suspended plasmid at -20°C. The DNA is stable for at least one year from date of shipping when stored at -20°C.
RefSeq:	<u>NM_197947.3</u>
RefSeq Size:	2592 bp
RefSeq ORF:	744 bp
Locus ID:	64581
UniProt ID:	<u>Q9BXN2</u>
Cytogenetics:	12p13.2
Protein Families:	Druggable Genome, Transmembrane
MW:	27.4 kDa
Gene Summary:	<p>This gene encodes a member of the C-type lectin/C-type lectin-like domain (CTL/CTLD) superfamily. The encoded glycoprotein is a small type II membrane receptor with an extracellular C-type lectin-like domain fold and a cytoplasmic domain with an immunoreceptor tyrosine-based activation motif. It functions as a pattern-recognition receptor that recognizes a variety of beta-1,3-linked and beta-1,6-linked glucans from fungi and plants, and in this way plays a role in innate immune response. Alternate transcriptional splice variants, encoding different isoforms, have been characterized. This gene is closely linked to other CTL/CTLD superfamily members on chromosome 12p13 in the natural killer gene complex region. [provided by RefSeq, Jul 2008]</p>

Product images:



Circular map for RC221893



Western blot validation of overexpression lysate (Cat# [LY405148]) using anti-DDK antibody (Cat# [TA50011-100]). Left: Cell lysates from un-transfected HEK293T cells; Right: Cell lysates from HEK293T cells transfected with RC221893 using transfection reagent MegaTran 2.0 (Cat# [TT210002]).