

## Product datasheet for **RC221892**

### **CASS4 (NM\_020356) Human Tagged ORF Clone**

#### **Product data:**

Product Type:	Expression Plasmids
Product Name:	CASS4 (NM_020356) Human Tagged ORF Clone
Tag:	Myc-DDK
Symbol:	CASS4
Synonyms:	C20orf32; CAS4; HEFL; HEPL
Mammalian Cell Selection:	Neomycin
Vector:	pCMV6-Entry (PS100001)
E. coli Selection:	Kanamycin (25 ug/mL)



[View online »](#)

ORF Nucleotide  
Sequence:

>RC221892 representing NM\_020356  
Red=Cloning site Blue=ORF Green=Tags(s)

TTTTGTAATACGACTCACTATAGGGCGGCCGGAATTCGTGACTGGATCCGGTACCGAGGAGATCTGCC  
GCC**CGCATCGCC**

ATGAAGGGAACAGGCATCATGGACTGTGCGCCCAAGCCTCCTGGCCAGGGCACTTTATGACAACCTGCC  
CTGACTGCTCTGACGAGCTGGCTTTTCAGCAGAGGGGACATCCTGACCATTCTGGAGCAACACGTGCCAGA  
AAGCGAGGGTTGGTGAAGTGTTTGTCTCCATGGGAGGCAAGGCCTGGCCCTGCCAACCGCTCCAAATC  
CTCACGGAGGTCGCTGCAGACAGGCCGTGCCCCCATTCCTGAGAGGCCTGGAAGAAGCTCCTGCCAGCT  
CAGAGGAGACCTATCAGGTGCCACTCTACCCCGCTCCACTCCAGGCCCGTTTATGAGCAGATGAG  
GAGTTGGGCGGAGGGGCCAGCCCTACTGCCAAGTCTATGAATCCCGACCTCCACCAGTGCCGGG  
AGAATCATCTGTAAAAGACTCTCAGCTTTCCAAAACAGGCCATCCTCACGTTCCAGACCTGTCCGGG  
CCTCACTGCCGACTCTGCCTCCAGGTGTATGACGTGCCTACCCAGCACCGGGGCCCGTGGTCTGAA  
GGAGCCAGAGAAGCAGCAGTTATATGACATACCAGCCAGCCCAAGAAGGCAGGACTCCATCCCCAGAC  
AGCCAAGCAAGTGGGCGAGGTGTTCCCTGATATCAGTACTACCTTAAGAAGAGGCGGTACAGCACAT  
TACCAAATCCTCAGAAATCGAATGGATTATGACACTCCAGTGTCTCCAGGAAAGGCCAGCGTCAGAAA  
CACGCCTCTACCAGCTTTCGGAAGAATCAAGGCCCCACGCTCTCCCGAGTCCAGCTCCACTTTCTAC  
AATCCTCAAGTGGCAGATCCAGGTCCCTCACTCCACAACGAATAACAATGTGCCCATGCGAAAAAAC  
TCAGCCTCCAGAAATCCTTCTTATGGCTTCTGTACCCAGAGGCACATTTCTTTGGATGAAGATGT  
CAGCTACAAGTTCTTCAAGCTTCTGATTCCCGAGTGAACAGCAGAACACCAAGCCCAATATTTAT  
GACATCCCTAAAGCAACGTCGAGTGTCTCAGGCTGGGAAGGAGCTGGAGAAAGCAAGGAGGTGTGAG  
AGAATCCGCGGGCCATAAATCCTCATGGTTCTCCAGACGGACAACCTCCCATCTCCTGAACCGGACAG  
ATTATCAGGTTCCAGTTCTGACAGCAGAGCTAGCATCGTTTCTCGTGCTCCACCACATCCACCGACGAC  
TCTCCAGCTTCTCCTCGGAGGAGTCAGCAAAGGAGCTCTCCTTGACCTGGATGTGGCCAGGAGACAG  
TGATGGCTCTGCAGCACAAAGGTGGTCAGCTCTGTGCTGGCTGATGCTCTTTGTCAGCAGGAAGTGGAG  
ATTCCGAGACTATCTGGAGGCCAACATTGATGCAATCCACAGGTCCACTGATCACATAGAAGAATCTGTA  
AGAGAATTTCTGGATTTTGGCCGAGGAGTCCATGGGACTGCCTGTAACTCACTGACAGTAACCTTCAGA  
ACAGAATTCGGGACCAGATGCAGACCATCTCAACTCCTACCGCATCCTGCTTGAACAAAGGAAAGCTT  
GGATAATCGCAATTGGCCTCTGGAAGTTCTTGTGACTGACAGTGTCCAGAACAGCCAGATGACCTTGAG  
AGGTTTGTGATGGTGGCAGGATGCTTCCAGAAGACATCAAGAGGTTTGCCTCCATTGTGATTGCCAATG  
GAAGGCTCCTTTTTAAGCGGAACGTGAAAAGGAGAGACTGTGCAAGTACCCCAATGCAGAATTTAA  
GTGTGAAAAATACATCCAGCCTCCCAAGAGAAACTGAATCACACCAAAAGAGTACCCCTTCCACTAAG  
CAAAGGGAAGATGAACACTCTTCTGAACTATTAAGAAAAATAGGGCAAAATATCTGTGGACAGAATCCTG  
GCCCTCTTATACCTCAGCCTTCGAGTCAACAGACTCCTGAGAGGAAACCCCGTTATCTGAACTGCCG  
GCTCTACTTTGGGGCGCTCTTCAAAGCCATCAGCGCATTTACGGCAGCCTCAGCAGCAGCCAGCCCGCG  
GAGATCATCACTCAGAGCAAGCTGGTCATCATGGTGGGACAGAAGCTGGTGGACACGCTGTGCATGGAGA  
CCCAGGAGAGGGACGTGCGCAACGAGATCCTCCGTGGCAGCAGTACCTCTGCAGCCTGCTCAAGGACGT  
AGCGCTGGCCACTAAGAATGCCGTGCTCAGTACCCAGCCCTGCCGCGCTGGGGCACCTCCAGGCGGAG  
GCTGAGAAGCTGGAGCAACACACGCGGCAGTTCAGAGGGACACTGGGA

**ACGCGT**ACGCGGCCGCTCGAGCAGAACTCATCTCAGAAGAGGATCTGGCAGCAAATGATATCCTGGATT  
ACAAGGATGACGACGATAAGGTTTAA

**Protein Sequence:** >RC221892 representing NM\_020356  
Red=Cloning site Green=Tags(s)

MKGTGIMDCAPKALLARALYDNCPCDSELAFSRGLDITILEQHVPESEGWWKCLLHGRQGLAPANRLQI  
LTEVAADRPCPPFLRGLLEAPASSEETYQVPTLPRPPTPGPVYEQMRSWAEGQPPTAQVYEFDPPTSA  
RIICEKTL SFPKQAILTLPRPVASLPTLPSQVYDVPTQHRGPVVLKEPEKQQLYDIPASPKKAGLHPPD  
SQASGQGVPLISVTTLRRGGYSTLPNPQKSEWIYDTPVSPGKASVRNTPLTSFAEESRPHALPSSSSTFY  
NPPSGRSRSLTPQLNNNVPMQKLSLPEIPSYGFLVPRGTFPLDEDVSYKVPSSFLIPRVEQQNTKPNII  
DIPKATSSVSQAGKELEKAKEVSENSAGHNSSWF SRRTTSPSPEPDRLSGSSSDSRASIVSSCSTTSTDD  
SSSSSSEESAKELSLDLVAKETVMALQHKVSVSVAGLMLFVSRKWRFRDYLEANIDAIHRSTDHIEESV  
REFLDFARGVHGTACNL TDSNLQNRIRDQMQTISNSYRILLETKESLDNRNWPLEVLTDSVQNSPDDLE  
RFVMVARMLPEDIKRFASIVIANGRLLFKRNCEKEETVQLTPNAEFKCEKYIQPPQRETESHQKSTPSTK  
QREDEHSSELLKKNRANICGQNPGLIPQPSSQQTPERKPRLSEHCRLYFGALFKAISAFHGSLSSSQPA  
EIIITQSKLVIMVGQKLVDTLCMETQERDVRNEILRGSSHLCSLLKDVALATKNAVLTYPSAALGHLQAE  
AEKLEQHTRQFRGTLG

TRTRPLEQKLISEEDLAANDILDYKDDDDKV

**Chromatograms:** [https://cdn.origene.com/chromatograms/mk8038\\_f01.zip](https://cdn.origene.com/chromatograms/mk8038_f01.zip)

**Restriction Sites:** Sgfl-Mlul

**Cloning Scheme:**


**ACCN:** NM\_020356

**ORF Size:** 2358 bp

**OTI Disclaimer:** The molecular sequence of this clone aligns with the gene accession number as a point of reference only. However, individual transcript sequences of the same gene can differ through naturally occurring variations (e.g. polymorphisms), each with its own valid existence. This clone is substantially in agreement with the reference, but a complete review of all prevailing variants is recommended prior to use. [More info](#)

**OTI Annotation:** This clone was engineered to express the complete ORF with an expression tag. Expression varies depending on the nature of the gene.

**Components:** The ORF clone is ion-exchange column purified and shipped in a 2D barcoded Matrix tube containing 10ug of transfection-ready, dried plasmid DNA (reconstitute with 100 ul of water).

**Reconstitution Method:**

1. Centrifuge at 5,000xg for 5min.
2. Carefully open the tube and add 100ul of sterile water to dissolve the DNA.
3. Close the tube and incubate for 10 minutes at room temperature.
4. Briefly vortex the tube and then do a quick spin (less than 5000xg) to concentrate the liquid at the bottom.
5. Store the suspended plasmid at -20°C. The DNA is stable for at least one year from date of shipping when stored at -20°C.

**RefSeq:** [NM\\_020356.4](#)

**RefSeq Size:** 3155 bp

**RefSeq ORF:** 2361 bp

**Locus ID:** 57091

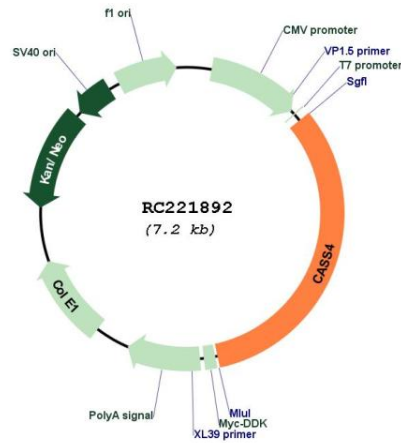
**UniProt ID:** [Q9NQ75](#)

**Cytogenetics:** 20q13.31

**MW:** 87.1 kDa

**Gene Summary:** Docking protein that plays a role in tyrosine kinase-based signaling related to cell adhesion and cell spreading. Regulates PTK2/FAK1 activity, focal adhesion integrity, and cell spreading. [UniProtKB/Swiss-Prot Function]

**Product images:**



Circular map for RC221892