

## Product datasheet for **RC221883**

### ODAD3 (NM\_145045) Human Tagged ORF Clone

#### Product data:

Product Type:	Expression Plasmids
Product Name:	ODAD3 (NM_145045) Human Tagged ORF Clone
Tag:	Myc-DDK
Symbol:	ODAD3
Synonyms:	CCDC151; CILD30; ODA10
Mammalian Cell Selection:	Neomycin
Vector:	pCMV6-Entry (PS100001)
E. coli Selection:	Kanamycin (25 ug/mL)



[View online »](#)

**ORF Nucleotide Sequence:**

>RC221883 ORF sequence  
 Red=Cloning site Blue=ORF Green=Tags(s)

TTTTGTAATACGACTCACTATAGGGCGGCCGGAATTCGTCGACTGGATCCGGTACCGAGGAGATCTGCC  
 GCC**GCGATCGCC**

ATGACATCTCCTCTGTGCAGGGCGCCTCCGCCAACGCCCTGCCTCCTCAGGACCAGGCTTCGACGCCCT  
 CTTCAGGGTCAAGGGCAGGGAGGCTTCGGGCAAACCCAGCCACCTCCGAGGCAAGGGCAGCCAGCCAGGC  
 GTGGACCCAGGCCGTTCCAAGGGAGGATCCTTCCACAGAGGTGCAGGGAAGCCCTCTGTCACTCTCAG  
 GTGGCTGAGTTACATAAAAAAGTACAAGTGTAGAGGGTGACCGGAAGGCTTTTTTTGAGAGCTCTCAGT  
 GGAACATCAAGAAGAACCAGGAGACCATCAGTCAGCTCCGCAAGGAGACTAAGGCACTGGAATAAAGCT  
 GCTGGACCTGCTCAAGGGAGATGAGAAAGTGGTCCAGGCAGTGATTTCGCGAATGGAAGTGGGAGAAGCCA  
 TACCTGAAGAACAGGACAGGACAGGCCCTGGAGCACCTAGACCACCGCTGAGGGAGAAGGTGAAGCAGC  
 AGAACGCCCTGCGGCACCAAGTGGTGTTCGGCAGAGGGCGCTGGAGGAGCTCCAGCTGCAGCACAGCCT  
 GCGCCTTCTGGAGATGGCGGAGGCGCAAACAGACACACGAGGTGGCCAAGACCATGCGGAACCTGGAG  
 AACCGCCTGGAGAAGGCCAGATGAAGGCGCAGGAGGCCGAGCACATTACCAGCGTGTACCTGCAGCTCA  
 AGGCCTATCTAATGGACGAGAGCCTCAACTTGGAGAACCAGGCTGGACTCCATGGAGGCTGAGGTGGTGA  
 GACCAACATGAGCTGGAGGCACTGCACGTGGTGAACCAAGAGGCCCTCAATGCCCGGACATTGCCAAG  
 AACCGCTGCAGTACCTAGAGGAGACCTTGGTTCGAGAGCGCAAGAAGCGGGAACGCTACATAAGTGAGT  
 GCAAGAAGCGCGCGAGGAGAAGAACTGGAGAACGAGCGCATGGAGCGCAAGACCCACCGCAGCACCT  
 GCTGCTACAGTCCGACGACCATCCAGGACAGCCTGCATGCCAAGGAGGAGGAGCTGCGGCAGCGCTGG  
 AGCATGTACCAGATGGAGGTGATCTTTGGCAAGGTCAAGGACGCCACTGGCACTGACGAGACGCACTGT  
 TGGTGGCGGGTTCCTGGCCAGGGCGACACCTTCGCGCAGTTGGAGACGCTCAAGAGCAAGAACGCA  
 GACGTTGGTGAAGCTGAAGCAGGAGAAGCAACAACCTGCAGCGGAGCTGGAAGACCTCAAGTACTCGGGG  
 GAGGCCACGCTGGTGAAGCAGCAGAACTGCAAGCCGAGGCGCAGGAGCGTCTCAAGAAGGAGGAGCGGC  
 GGCACGCCGAGGCAAGGACAGCTGGAGCGCGCCTTGCGGGCGATGCAAGTGGCCAAGGACAGCCTGGA  
 GCACCTGGCCAGCAAGCTGATCCACATCACTGTGGAGGACGGCGCTTCGCGGAAAGGAGCTGGATCCC  
 CAGGCAGATAACTATGTGCCAACCTGCTGGGCCTCGTGGAGGAAAGCTGCTGAACTGCAGGCGCAGC  
 TCCAGGGCCACGCTGCAGGAGATGCTGTGCCACATCGCTAACCGCGAGTTCCTCGCCAGCTTAGAGGG  
 AAGGCTGCCGAATAACAACCCGCATCGCCCTGCCCTTGCCACTTCCAAGGACAAGTTTTTTGACGAA  
 GAGAGTGAGGAGGAGACAACGAGGTAGTGACCCGCGCATCACTCAAGATCCGTTCCAGAAATTAATCG  
 AAAGTACAAGAAGCACCGTCTCGAGGTC

**ACGCGT**ACGCGGCGGCTCGAGCAGAACTCATCTCAGAAGAGGATCTGGCAGCAAATGATATCCTGGATT  
 ACAAGGATGACGACGATAAGGTTTAA

**Protein Sequence:**

>RC221883 protein sequence  
 Red=Cloning site Green=Tags(s)

MTSPLCRAASANALPPQDQASTPSSRVKGREASGKPSHLRGKGTQAQWTPGRSKGGSFHRGAGKPSVHSQ  
 VAELHKKIQLLEGDRKAFFESSQWNIKKNQETISQLRKETKALELKLKLLDLLKGDEKVVQAVIREWKWEK  
 YLKNRTGQALEHLDHRLREKVKQNALRHQVLRQRRLEELQLQHSLRLEMAEAQNRHTEVAKTMRNLE  
 NRLEKAQMKAEAEHITSVYLQLKAYLMDÉSLNLENRDSMEAEVVRTKHELEALHVVNQEALNARDIAK  
 NQLQYLEETLVRERKKRERYISECKKRAEEKLENERMERKTHREHLLQSDDTIQDSLHAKKEELRQRW  
 SMYQMEVIFGKVKDATGTDETHSLVRRFLAQGDTFQLETLKSENEQTLVRLKQEKQQLQRELEDLKYS  
 EATLVSQKQLQAEAQERLKEERRHAEAKDQLERALRAMQVAKDSLEHLASKLIHITVEDGRFAGKELDP  
 QADNYVNNLLGLVEEKLLKLAQLQGHVQEMLCHIANREFLASLEGRLEPEYNTRIALPLATSKDKFFDE  
 ESEEDNEVVTRASLKIERSQKLIESHKKHRRSRS

**TR**TRPLEQKLISEEDLAANDILDYKDDDDKV

**Chromatograms:**

[https://cdn.origene.com/chromatograms/mk6100\\_a09.zip](https://cdn.origene.com/chromatograms/mk6100_a09.zip)

Restriction Sites: SgfI-MluI

Cloning Scheme:



ACCN: NM\_145045

ORF Size: 1785 bp

OTI Disclaimer: The molecular sequence of this clone aligns with the gene accession number as a point of reference only. However, individual transcript sequences of the same gene can differ through naturally occurring variations (e.g. polymorphisms), each with its own valid existence. This clone is substantially in agreement with the reference, but a complete review of all prevailing variants is recommended prior to use. [More info](#)

OTI Annotation: This clone was engineered to express the complete ORF with an expression tag. Expression varies depending on the nature of the gene.

Components: The ORF clone is ion-exchange column purified and shipped in a 2D barcoded Matrix tube containing 10ug of transfection-ready, dried plasmid DNA (reconstitute with 100 ul of water).

- Reconstitution Method:
1. Centrifuge at 5,000xg for 5min.
  2. Carefully open the tube and add 100ul of sterile water to dissolve the DNA.
  3. Close the tube and incubate for 10 minutes at room temperature.
  4. Briefly vortex the tube and then do a quick spin (less than 5000xg) to concentrate the liquid at the bottom.
  5. Store the suspended plasmid at -20°C. The DNA is stable for at least one year from date of shipping when stored at -20°C.

RefSeq: [NM\\_145045.5](#)

RefSeq Size: 2176 bp

RefSeq ORF: 1788 bp

Locus ID: 115948

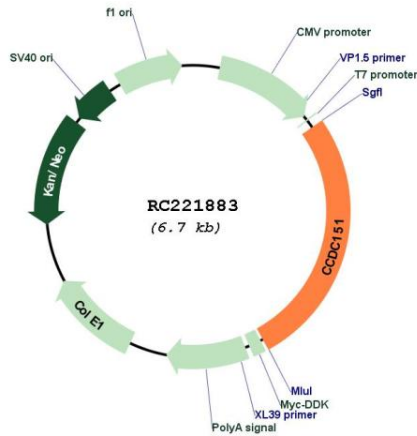
UniProt ID: [A5D8V7](#)

Cytogenetics: 19p13.2

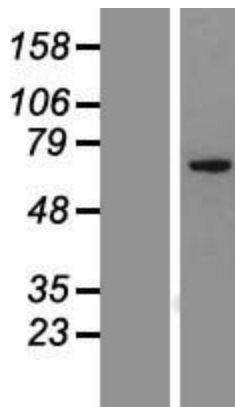
MW: 69.1 kDa

**Gene Summary:** This gene encodes a protein containing coiled-coil domains. The encoded protein functions in outer dynein arm assembly and is required for motile cilia function. Mutations in this gene result in primary ciliary dyskinesia. Alternative splicing results in multiple transcript variants encoding different isoforms. [provided by RefSeq, Oct 2014]

**Product images:**



Circular map for RC221883



Western blot validation of overexpression lysate (Cat# [LY408063]) using anti-DDK antibody (Cat# [TA50011-100]). Left: Cell lysates from untransfected HEK293T cells; Right: Cell lysates from HEK293T cells transfected with RC221883 using transfection reagent MegaTran 2.0 (Cat# [TT210002]).