

Product datasheet for RC221880

SBNO1 (NM_018183) Human Tagged ORF Clone

Product data:

Product Type:	Expression Plasmids
Product Name:	SBNO1 (NM_018183) Human Tagged ORF Clone
Tag:	Myc-DDK
Symbol:	SBNO1
Synonyms:	MOP3; Sno
Mammalian Cell Selection:	Neomycin
Vector:	pCMV6-Entry (PS100001)
E. coli Selection:	Kanamycin (25 ug/mL)
ORF Nucleotide Sequence:	>RC221880 ORF sequence Red=Cloning site Blue=ORF Green=Tags(s)

TTTTGTAATACGACTCACTATAGGGCGGCCGGAATTCGTCGACTGGATCCGGTACCGAGGAGATCTGCC
GCC**CGATCGCC**

ATGGTGGAGCCAGGGCAAGATTTACTGCTTGCTGCTTTGAGTGAGAGTGGAAATTAGTCCGAATGACCTCT
TTGATATTGATGGTGGAGATGCAGGGCTTGCAACTCCAATGCCTACCCCGTCAGTTCAGCAGTCACTGCC
ACTTAGTGCATTAGAAGTGGTGGAGACCGAAGCAGCAGTTCCTGTTAAACAAGAACCAGAGACTGTA
CCTACTCCAGCACTATTAATGTGAGGCAGCAGCTCCATCTACTACAACATTTGTGCTGAATCAAATAA
ATCATCTTCCACCCTTGGGATCTACAATTGTAATGACTAAAACACCACCTGTAACAACCAACAGGCAAAC
CATCACTTAACTAAGTTTATCCAGACTACTGCAAGCACAGCCCGTCAGTCTCAGCACCAACAGTACGA
AATGCCATGACCTCTGCACCTTCAAAGACCAAGTTCAGCTTAAAGATCTACTGAAAAATAATAGTCTTA
ATGAACTGATGAAACTAAAGCCACCTGCTAATATTGCTCAGCCAGTAGCAACAGCAGCTACTGATGTAAG
CAATGGTACAGTAAAGAAAGAGTCTTCTAATAAAGAAGGAGCTAGAATGTGGATAAACGACATGAAGATG
AGGAGTTTTTCCCAACCATGAAGGTTCTGTTGTAAGAAGATGATGAACCAGAGGAAGAAGATGAAG
AAGAAATGGGTGCAGAAACCTATGCAGAATACATGCCAATAAAATTAATAATGGCCTACGTCATCC
AGATGCTGTAGTGAAACCAGCTCTTTATCCAGTGTACTCCTCTGATGTTTGGTACAAAAATCCATT
TCTGAGGAAACCATTGATAATGGCTGGTTATCAGCATTGCAGCTTGAGGCAATTACATATGCAGCCGAGC
AACATGAAACTTTCTACCTAATGGAGATCGTGCTGGCTTCTAATAGGTGATGGTGCCGGTGTAGGAAA
AGGAAGGACGATAGCAGGAATCATCTATGAAAATTATTTGTTGAGTAGAAAACGAGCATTGTGGTTTGT
GTTTCAAATGACTTAAAGTATGATGCTGAAAGAGATTTAAGGGATATTGGAGCAAAAAACATTTTGGTTC
ATTCGTTAAATAAGTTTAAATACGGAAAAATTTCTTCAAACATAATGGGAGTGTGAAAAAGGGTGTAT
TTTTGCTACTTACTCTTCACTTATTGGTAAAGCCAGTCTGGCGCAAGTATAAACTAGGTTAAAAACA
CTTCTGCATTGGTGGGATGACTTCGATGGAGTGATAGTGTGATGAGTGCATAAAGCCAAAAACT
TATGTCCTGTTGGTTCTCAAAGCCAACCAAGACAGGCTTAGCAGTTTTAGAGCTTCAGAACAAATTGCC
AAAAGCCAGAGTTGTTTATGCTAGTGCAACTGGTCTTCTGAACCAGCAACATGGCCTATATGAACCGT



[View online >](#)

CTTGCCATATGGGGTGGGGTACTCCATTTAGAGAATTCAGTGATTTTATCAAGCAGTAGAACGGAGAG
GAGTTGGTCCATGGAAATAGTTGCTATGGATATGAAGCTTAGAGGAATGTACATTGCTCGACAACCTGAG
CTTTACTGGAGTGACCTTCAAAATTGAGGAAGTCTTCTTTCTCAGAGCTACGTTAAAATGTATAACAAA
GCTGTCAAGCTGTGGGTGATCGCCAGAGAGCGGTTTCAGCAAGCTGCAGATCTGATTGATGCTGAGCAAC
GAATGAAGAAGTCCATGTGGGGTCACTTCTGGTCTGCTCACCAGAGGTTCTTCAAATACTTATGCATAGC
ATCCAAAGTTAAAAGGGTGTGCAACTAGCTCGAGAGGAAATCAAGAATGGAAAAATGTGTGTAATTGGT
CTGCAGCTACAGGAGAAGCTAGAACATTAGAAGCTTTGGAAGAGGGCGGGGGAGAAATGAAATGATTTTG
TTTCAACTGCCAAAGGTGTGTTGCAGTCACTCATTGAAAAACATTTTCTGCTCCAGACAGGAAAAA
TTATAGTTTACTAGGAATCGATTGACAGCTCCAAGTAACAACAGTTCGCCAAGAGATAGCCTTGTAAA
GAAAAATAAATAAAGAAGCGAAAGGTGAAGAAATAACTCGAGAAGCAAAAAGCACGAAAAGTAGGTG
GCCTTACTGGTAGCAGTTCTGACGACAGTGGAAGTGAATCTGATGCCTCTGATAATGAAGAAAGTGACTA
TGAGAGCTCTAAAAACATGAGTTCTGGAGATGATGACGATTTCAACCCATTTTATAGATGAGTCTAATGAG
GATGATGAAAATGATCCCTGGTTAATTAGAAAAGACCACAAGAAAAACAAAGAGAAAAAAGAAGAAAA
GTATAGATCCAGATTCTATTCAAAGTGCCTTATTAGCATCAGGTCTTGGATCAAAACGACCTAGTTTTTC
ATCTACACCAGTTATCTCACCTGCTCCTAACAGTACACCAGCTAACAGTAAACCAACAGTAAACAGTAGC
CTTATAACAAGTCAAGGATGCTGTGGAAAGGGCTCAGCAGATGAAGAAAGACCTGCTTGATAAGCTAGAAA
AATTAGCTGAAGACCTCCCCCTAATACCTGGATGAACCTTATCGATGAACCTTGGTGGCCCTGAGAACGT
TGCTGAGATGACTGGCCGAAGGACGGGTTGTGAGCAATGATGATGGAAGCATATCTTATGAGTCAAGA
TCTGAACCTGATGTGCCTGTGGAATACTAAACATCACAGAAAAACAACGATTTATGGATGGAGATAAGA
ATATTGCTATCATCTCAGAAGCTGCCAGCTCGGGTATTTTATTACAAGCAGATAGGAGAGCTAAAAATCA
AAGGCGAAGAGTTCATATGACTTTAGAATTACCTTGGAGCGCTGATAGAGCAATTAACAGTTCCGGACGT
ACTCATAGATCAAACCAAGTACTGCTCCTGAGTATGTCTTTCTGATATCTGAACCTGGCAGGAGAACAAA
GATTTGCACTATTGTTGCTAAAAGACTTGAGAGTTTGGGGCACTTACACATGGCGATAGAAGGGCAAC
AGAATCTAGAGATCTGAGCAGGTTCAACTTTGATAATAAGTATGGAAGAATGCTTTAGAAATTGTCATG
AAATCCATTGTAACCTGGATTCTCCTATGGTATCACCACCTCCAGACTATCCTGGAGAATTTTTAAAG
ATGTTGCAACAAGGACTGATAGGCGTTGGCCTGATAAATGTAGAAGATCGCTCGGGAATCTTACTCTCGA
TAAAGATTATAACAACATAGGAAAATCTTAAATAGAATTTTAGGCATGGAGGTGCATCAGCAGAATGCG
TTATTTTCAAGTTTTGCGGACACACTTACTGCAGTTGTTCAAAATGCCAAAAAATGGAAGATATGATA
TGGAATCTTAGATCTTGGTTCTGGAGATGAAAAAGTGGGAAAAGTGTGTTAAAAAGTTTCTGACTCC
AGGATATTCAACCTCTGGCCACGTAGAATTATACACAATTAGTGTAGAGAGGGGAATGTCATGGGAGGAA
GCTACCAAGATTTGGGCTGAGCTGACAGGACCAGACGATGGCTTTTACTTGTCTTGCATAAAGGAACA
ACAAGAAAAGTGCATCTTAGTTAAAGAAGTGAATCCTAAAAAGAACTTTTCTTAGTTTATCGACCAAA
TACTGGGAAGCAGCTCAAATTAGAAATTTATGCTGATCTAAAAAAGAAATATAAGAAGGTCGTCTCAGAT
GATGCCCTGATGCACTGGTTAGATCAGTATAATTCATCTGCAGATACTTGTACTCATGCTTATTGGCGCG
GCAATTGCAAAAAAGCAAGCTTGGGGCTAGTTTGTGAAATAGGTCTTCGTTGCCGTACATATTATGTATT
ATGTGGTTCAGTGTGAGTGTCTGGACAAAAGTTGAGGGTGTCTAGCATCTGTCAAGTGGCACAACCGT
AAGATGCAGATCGTGGGCTAAGAACGGAAGATGGGCAACGGATTGTAGGTTTGTATTCGGGCAAT
GTGTGTCTCCTCTGTAATCTCCTATCAACTTCAGACCAGTCTCAACAGCTTGGCGTCCAACAGAAACA
GCTATGGCAACAGCATCACCTCAGAGCATCACAACCTTGGCAACGCA

ACGCGTACGCGGGCGCTCGAGCAGAACTCATCTCAGAAGAGGATCTGGCAGCAATGATATCCTGGATT
ACAAGGATGACGACGATAAGGTTTAA

Protein Sequence: >RC221880 protein sequence
Red=Cloning site Green=Tags(s)

```

MVEPGQDLLLAALSEGISPNDLFDIDGGDAGLATPMPTPSVQQSVPLSALELGLTEAAVPVKQEPETV
PTPALLNVRQPPSTTTFLNQNHLPLPGSTIVMTKTPPVTTNRQTITLTKFIQTTASTRPSVSAPTVR
NAMTSAPSKDQVQLKDLLKNNSLNELMKLKPPANIAQPVATAATDVSNQVKKESSNKEGARMWINDMKM
RSFSPTMKVPVVKEDDEPEEEDEEEMGHAETAYEYMPIKLIKIGLRHPDAVVETSSLSSVTPPDVWYKTSI
SEETIDNGWLSALQLEAITYAAQHQHETFLPNGDRAGFLIGDGAGVGKGRTIAGIYENYLLSRKRALWFS
VSNDLKYDAERDLRDIGAKNILVHSLNKFYKGISSKHNGSVKKGVIIFATYSSLIGESQSGGKYKTRLKQ
LLHWCDDDFDGVIVFDECHKAKNLCPVGS SKPTKTGLAVLELQNKLPKARVYASATGASEPRNMYMNR
LGIWGEPTPFREFSDFIQAVERRGVGAMEIVAMDMKLRGMYIARQLSFTGVTFKIEEVLQSQSYVKMYNK
AVKLWVIARERFQQAADLIDAEQRMKSMWGFWSAHQRFFKYLCAISKVKRVVQLAREEIKNGKCVVIG
LQSTGEARTLEALEEGGELNDFVSTAKGVLQSLIEKHFAPDRKKLYSLLGIDL TAPSNSSPRDSPCK
ENKIKRKGEEITREAKKARKVGLTGSSDSDSGESDASDNEESDYESSKNMSSGDDDDFNPFDESNE
DDENDPWLIRKDHKKNEKKKKSIDPDSIQSALLASGLGSKRPSFSSTPVI SPAPNSTPANSNTNSNSS
LITSQDAVERAQQMKDLDLKDLEKLAEDLPNTLDELIDELGGPENVAEMTGRKGRVVSNDGDSIYESR
SELDVPVEILNITEKQRFMDGKNIAIIEAASSGISLQARRAKNQRRRVHMTLELPWSADRAIQQFGR
THRSNQVTAPEYVFLISELAGEQRFASIVAKRLESLGAL THGDRRATESRDL SRFNFDNKYGRNALEIVM
KSIVNLDSPMVSPPPDYPGEFFKDVRQGLIGVGLINVEDRSGIL TLDKDYNNIGKFLNRI LGMEVHQNA
LFQYFADTLTAVVQNAKKNGRYDMGILD LSGSGDEKVRKSDVKKFLTPGYSTSGHVELYTI SVERGMSWEE
ATKIWAELTGPDDGFYLSLQIRNNKKTALVKEVNPKKLFLVYRPNTGKQLKLEIYADLKKYKVVSD
DALMHWLDQYNSSADTCTHAYWRGNCKKASLGLVCEIGLCRRTYYVLCGSVLSVWTKVEGVLASVSGTNV
KMQIVRLRTEDGQRIVGLIIPANCVSPLVNLSTSDQSQQQLAVQQQLWQQHHPQSITNLSNA
    
```

TRTRPLEQKLISEEDLAANDILDYKDDDDKV

Chromatograms: https://cdn.origene.com/chromatograms/mk6715_h05.zip

Restriction Sites: SgfI-MluI

Cloning Scheme:

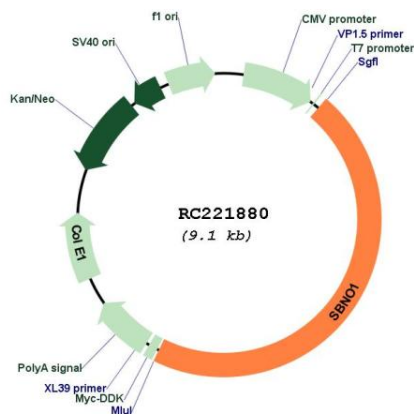


* The last codon before the Stop codon of the ORF

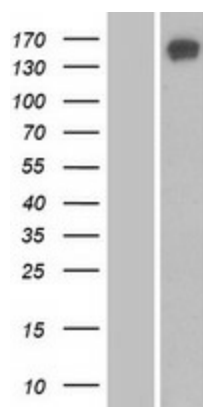
ACCN: NM_018183

ORF Size: 4179 bp

OTI Disclaimer:	The molecular sequence of this clone aligns with the gene accession number as a point of reference only. However, individual transcript sequences of the same gene can differ through naturally occurring variations (e.g. polymorphisms), each with its own valid existence. This clone is substantially in agreement with the reference, but a complete review of all prevailing variants is recommended prior to use. More info
OTI Annotation:	This clone was engineered to express the complete ORF with an expression tag. Expression varies depending on the nature of the gene.
Components:	The ORF clone is ion-exchange column purified and shipped in a 2D barcoded Matrix tube containing 10ug of transfection-ready, dried plasmid DNA (reconstitute with 100 ul of water).
Reconstitution Method:	<ol style="list-style-type: none"> 1. Centrifuge at 5,000xg for 5min. 2. Carefully open the tube and add 100ul of sterile water to dissolve the DNA. 3. Close the tube and incubate for 10 minutes at room temperature. 4. Briefly vortex the tube and then do a quick spin (less than 5000xg) to concentrate the liquid at the bottom. 5. Store the suspended plasmid at -20°C. The DNA is stable for at least one year from date of shipping when stored at -20°C.
RefSeq:	NM_018183.5
RefSeq Size:	10978 bp
RefSeq ORF:	4179 bp
Locus ID:	55206
UniProt ID:	A3KN83
Cytogenetics:	12q24.31
MW:	154.3 kDa

Product images:


Circular map for RC221880



Western blot validation of overexpression lysate (Cat# [LY413228]) using anti-DDK antibody (Cat# [TA50011-100]). Left: Cell lysates from untransfected HEK293T cells; Right: Cell lysates from HEK293T cells transfected with RC221880 using transfection reagent MegaTran 2.0 (Cat# [TT210002]).