

Product datasheet for **RC221878**

FCRL2 (NM_030764) Human Tagged ORF Clone

Product data:

Product Type:	Expression Plasmids
Product Name:	FCRL2 (NM_030764) Human Tagged ORF Clone
Tag:	Myc-DDK
Symbol:	FCRL2
Synonyms:	CD307b; FCRH2; IFGP4; IRTA4; SPAP1; SPAP1A; SPAP1B; SPAP1C
Mammalian Cell Selection:	Neomycin
Vector:	pCMV6-Entry (PS100001)
E. coli Selection:	Kanamycin (25 ug/mL)



[View online »](#)

ORF Nucleotide Sequence:

>RC221878 representing NM_030764
 Red=Cloning site Blue=ORF Green=Tags(s)

TTTTGTAATACGACTCACTATAGGGCGGCCGGAATTCGTCGACTGGATCCGGTACCGAGGAGATCTGCC
 GCC**CGGATCGCC**

ATGCTGCTGTGGTCATTGCTGGTCATCTTTGATGCAGTCACTGAACAGGCAGATTCGCTGACCCCTGTGG
 CGCCCTCTTCTGTCTTCAAGGAGACAGCATCGTTCTGAAATGCCAGGGAGAACAAGAACTGGAAAATTC
 GAAGATGGCTTACCATAAGGATAACAAAGATTATCTGTTTTCAAAAAATTCAGATTTCTTATCCAA
 AGTGACAGTTTTAAGTGACAGTGGTAACATTTCTGTAGTACCAAAGGACAACCTTTCTCTGGGATAAAA
 CTTCAAATATAGTAAAGATAAAAGTCCAAGAGCTTTTCAACGTCTGTGCTGACTGCCAGCTCCTTCCA
 GCCCATCGAAGGGGTCCAGTGAGCCTGAAATGTGAGACCCGGCTCTCCACAGAGGTTGGATGTTCAA
 CTCAGTTCTGCTTCTCAGAGAAAACCAGGTCTGGGGTCAGGCTGGAGCAGCTCTCCGGAGCTCCAGA
 TTTCTGCCGTGTGGAGTGAAGACACAGGTCTTACTGGTGAAGGCAGAAACGGTACTCACAGGATCAG
 AAAACAGAGCCTCCAATCCAGATTCACGTGCAGAGAATCCCATCTCTAATGTAAGCTTGAGATCCGG
 GCCCCCGGGGACAGGTACTGAAGGACAAAACCTGATCCTGCTCTGCTCAGTGGCTGGGGTACAGGAA
 ATGTCACATTCTCCTGGTACAGAGAGGCCACAGGAACCAGTATGGGAAAGAAAACCCAGCGTTCCCTGTC
 AGCAGAGCTGGAGATCCCAGCTGTGAAAGAGAGTGATGCCGGCAAATATTACTGTAGAGCTGACAACGGC
 CATGTGCCTATCCAGAGCAAGGTGGTGAATATCCCTGTGAGAATCCAGTGTCTCGCCCTGCTCACC
 TCAGGTCTCCTGGGGCCAGGCTGCAGTGGGGACCTGCTGGAGCTTCACTGTGAGGCCCTGAGAGGCTC
 TCCCCAATCTTGTACCAATTTTATCATGAGGATGTCACCCTGGGAACAGCTCGCCCCCTCTGGAGGA
 GGGGCTCCTTCAACCTCTTTTACTGCAGAACATTCTGGAACTACTCCTGTGAGGCCAACACGGCC
 TGGGGCCCAAGTGCAGTGAAGCAGTCCAGTCTCCATCTCAGGACCTGATGGCTATAGAAGAGACCTCAT
 GACAGCTGGAGTTCTCTGGGACTGTTTGGTGTCTTGGTTTCACTGGTGTGCTTTGCTGTTGTATGCC
 TTGTTCCACAAGATATCAGGAGAAAGTTCTGCCACTAATGAACCCAGAGGGGCTCCAGGCCAAATCCTC
 AAGAGTTCACCTATTCAAGCCCAACCCAGACATGGAGGAGCTGCAGCCAGTGTATGTCAATGTGGGCTC
 TGTAGATGTGGATGTGGTTTATTCTCAGGTCTGGAGCATGCAGCAGCCAGAAAGCTCAGCAACATCAGG
 ACACTTCTGGAGAACAGGACTCCCAAGTCATCTACTCTTCTGTGAAGAAATCA

ACGCGTACGCGGCCGCTCGAGCAGAACTCATCTCAGAAGAGGATCTGGCAGCAAATGATATCCTGGATT
 ACAAGGATGACGACGATAAGGTTTAA

Protein Sequence:

>RC221878 representing NM_030764
 Red=Cloning site Green=Tags(s)

MLLWLLLVIFDAVTEQADSLTLVAPSSVFEGDSIVLKCQGEQNWKIQKMAYHKDNKELSVFKKFSDFLIQ
 SAVLSDSGNYFCSTKQQLFLWDKTSNIVKIKVQELFQRPVLTASSFQPIEGGPVSLKCETRLSPQRLDVQ
 LQFCFFRENQVLGSGWSSPELQISAVWSEDTGSYWCKAETVTHIRKQSLQSQIHVQRIPISNVLSLEIR
 APGGQVTEGQKLILLCSVAGGTGNVTFSWYREATGTSMGKKTQRSLSAELEIPAVKESDAGKYCRADNG
 HVPIQSKVNNIPVRIPVSRPVLTLRSPGAQAAVGDLELHCEALRGSPPILYQFYHEDVTLGNSSAPSGG
 GASFNLSLTAHSGNYSCEANGLGAQCSEAVPVSISGPDGYRRDLMTAGVLWGLFVLFVGLFTGVALLLYA
 LFHKISGESSATNEPRGASRPNPQEFTYSSPTPDMEELQPVVVNVGSVDVDDVVYSQVWSMQPESSANIR
 TLEENKDSQVIYSSVKKS

TRTRPLEQKLISEEDLAANDILDYKDDDDKV

Chromatograms:

https://cdn.origene.com/chromatograms/mk6504_e12.zip

Restriction Sites:

Sgfl-Mlul

Cloning Scheme:


ACCN: NM_030764

ORF Size: 1524 bp

OTI Disclaimer: The molecular sequence of this clone aligns with the gene accession number as a point of reference only. However, individual transcript sequences of the same gene can differ through naturally occurring variations (e.g. polymorphisms), each with its own valid existence. This clone is substantially in agreement with the reference, but a complete review of all prevailing variants is recommended prior to use. [More info](#)

OTI Annotation: This clone was engineered to express the complete ORF with an expression tag. Expression varies depending on the nature of the gene.

Components: The ORF clone is ion-exchange column purified and shipped in a 2D barcoded Matrix tube containing 10ug of transfection-ready, dried plasmid DNA (reconstitute with 100 ul of water).

Reconstitution Method:

1. Centrifuge at 5,000xg for 5min.
2. Carefully open the tube and add 100ul of sterile water to dissolve the DNA.
3. Close the tube and incubate for 10 minutes at room temperature.
4. Briefly vortex the tube and then do a quick spin (less than 5000xg) to concentrate the liquid at the bottom.
5. Store the suspended plasmid at -20°C. The DNA is stable for at least one year from date of shipping when stored at -20°C.

RefSeq: [NM_030764.4](#)

RefSeq Size: 2573 bp

RefSeq ORF: 1527 bp

Locus ID: 79368

UniProt ID: [Q96LA5](#)

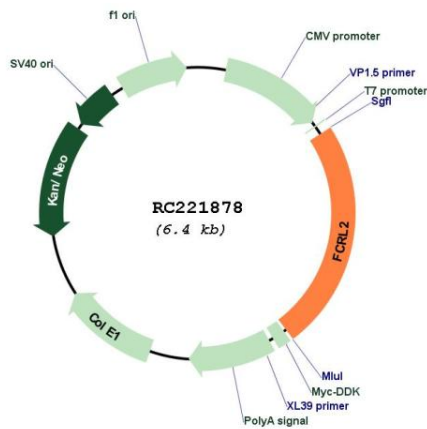
Cytogenetics: 1q23.1

Protein Families: Druggable Genome, Transmembrane

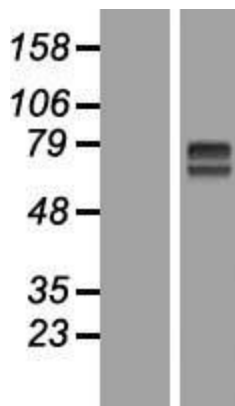
MW: 53.4 kDa

Gene Summary: This gene encodes a member of the immunoglobulin receptor superfamily and is one of several Fc receptor-like glycoproteins clustered on the long arm of chromosome 1. The encoded protein has four extracellular C2-type immunoglobulin domains, a transmembrane domain and a cytoplasmic domain that contains one immunoreceptor-tyrosine activation motif and two immunoreceptor-tyrosine inhibitory motifs. This protein may be a prognostic marker for chronic lymphocytic leukemia. Alternatively spliced transcript variants have been described, but their biological validity has not been determined. [provided by RefSeq, Apr 2009]

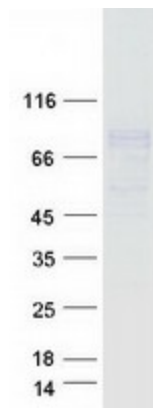
Product images:



Circular map for RC221878



Western blot validation of overexpression lysate (Cat# [LY410726]) using anti-DDK antibody (Cat# [TA50011-100]). Left: Cell lysates from untransfected HEK293T cells; Right: Cell lysates from HEK293T cells transfected with RC221878 using transfection reagent MegaTran 2.0 (Cat# [TT210002]).



Coomassie blue staining of purified FCRL2 protein (Cat# [TP321878]). The protein was produced from HEK293T cells transfected with FCRL2 cDNA clone (Cat# RC221878) using MegaTran 2.0 (Cat# [TT210002]).