

Product datasheet for **RC221868**

CLEC4F (NM_173535) Human Tagged ORF Clone

Product data:

Product Type:	Expression Plasmids
Product Name:	CLEC4F (NM_173535) Human Tagged ORF Clone
Tag:	Myc-DDK
Symbol:	CLEC4F
Synonyms:	CLECSF13; KCLR
Mammalian Cell Selection:	Neomycin
Vector:	pCMV6-Entry (PS100001)
E. coli Selection:	Kanamycin (25 ug/mL)



[View online »](#)

ORF Nucleotide Sequence:

>RC221868 representing NM_173535
 Red=Cloning site Blue=ORF Green=Tags(s)

TTTTGTAATACGACTCACTATAGGGCGGCCGGAATTCGTCGACTGGATCCGGTACCGAGGAGATCTGCC
 GCC**CGGATCGCC**

ATGGACGGTGAGGCAGTCCGCTTCTGCACAGATAACCAGTGTGTCTCCCTGCACCCCAAGAGTGGACT
 CTGTGGCAATGGCTCCTGCAGCCCCAAGATACCGAGGCTCGTTCAAGGCTACCCCGCATTTATGGCTGT
 GACCTTGGTCTTCTCTCTGTGACTCTCTTTGTAGTGGTTCAACAGCAGACAAGACCTGTTCCGAAGCCT
 GTGCAAGCCGTAATTCTGGGAGACAACATTACTGGGCATTTACCTTTTGAACCAACAATCATCACCCT
 TTGGCAGGGAGGCAGAAATGCGAGAGCTTATCCAGACATTTAAAGGCCACATGGAGAATTCAGTGCCTG
 GGTAGTAGAAATCCAGATGTTGAAGTGCAGAGTGGACAATGTCAATTCGCAGCTCCAGGTGCTCGGTGAT
 CATCTGGAAACCAATGCTGACATCCAGATGGTAAAAGGAGTCTAAAGGATGCCACTACATTGAGTT
 TGCAGACACAGATGTTAAGGAGTCCCTGGAGGGAACCAATGCTGAGATCCAGAGGCTCAAGGAAGACCT
 TGAAGGCGAGATGCTTTAACTTCCAGACGCTGAATTTCTTAAAAAGCAGTTTAGAAAAACACCAGCATT
 GAGCTCCACGTGCTAAGCAGAGGCTTAGAAAAATGCAAACCTCTGAAATTCAGATGTTGAATGCCAGTTTGG
 AAACGGCAAATACCCAGGCTCAGTTAGCCAATAGCAGTTTAAAGAACGCTAATGCTGAGATCTATGTTTT
 GAGAGGCCATCTAGATAGTGTCAATGACTTGAGGACCCAGAACCAGGTTTTAAGAAATAGTTTGGAAAGGA
 GCCAATGCTGAGATCCAGGGACTAAAGGAAAAATTCAGAACACAAATGCTTTAACTCCAGACCCAGG
 CCTTTATAAAAAGCAGTTTTGACAACTAGTGTGAGATCCAGTTCTTAAAGAGGTCATTTGAAAGAGC
 TGGTGTGAAATTCACGTGTTAAAAGGGATTTGAAAAATGGTACAGCCAGACCCAAAAAGCAAATGGC
 CGTCTGGACCAGACAGATACTCAGATTCAGGTATTCAAGTCAGAGATGGAAAAATGTAATACCTTAAATG
 CCCAGATTCAGGCTTAAATGGTCATATGAAAAATGCCAGCAGAGAGATACAGACCCTAAAAACAAGGAAT
 GAAGAATGCTTCAGCCTTAACTTCCAGACCCAGATGTTAGACAGCAATCTGCAGAAGGCCAGTCCCGAG
 ATCCAGAGGTTAAGAGGGGATCTAGAGAACACCAAGCTTAACCATGGAATCCAGCAGGAGCAGAGTC
 GCCTGAAGACCCTCCATGTGGTCACTTCTCACAGGAACAGCTACAAAGAACCCAAAGTCAGCTTCTCCA
 GATGGTCTGCAAGGCTGGAAGTTCAATGGTGAAGCTTATATTATTTTCTAGTGTCAAGAAGTCTTGG
 CATGAGGCTGAGCAGTTCTGCGTGTCCCAGGGAGCCCATCTGGCATCTGTGGCTCCAAGGAGGAGCAGG
 CATTCTGGTAGAGTTCACAAGTAAAGTGTACTACTGGATCGGTCTCACTGACAGGGGCACAGAGGGCTC
 CTGGCGCTGGACAGATGGACACCATTCAACGCCGCCAGAACAAGCGCCTGGTCCAAGGGATCTCTGC
 CCACTCAGAAAGTATATTATTGTGAATCTGGGATGGGAGCTTGCAGCTTCATAGACACCCCTCCCTGTC
 CCTGGATCCTCAGTAAC

ACGCGTACGCGGCCGCTCGAGCAGAAACTCATCTCAGAAGAGGATCTGGCAGCAAATGATATCCTGGATT
 ACAAGGATGACGACGATAAGGTTTAA

Protein Sequence:

>RC221868 representing NM_173535
 Red=Cloning site Green=Tags(s)

MDGEAVRFCTDNQCVSLHPQEVDVSAMAPAAPKIPRLVQATPAFMAVTLVFSLVTLFVVVQQTRPVPKP
 VQAVILGDNITGHLPFEPNNHHHFGREAMRELIQTFKGHMENS SAWVVEIQMLKCRVDNVNSQLQVLGD
 HLGNTNADIQMVKGVLKDATTLSLQTMRLRSSLEGTNAEIQRLKEDLEKADALTFQTLNFKSSLENTSI
 ELHVL SRGLENANSEIQMLNASLETANTQAQLANSSLNANAEIYVLRGHLDSVNDLRTQNQVLRNSLEG
 ANAEIQGLKENLQNTNALNSQTQAFIKSSFNTSAEIQFLRGHLERAGDEIHVLRKDLKMVTAQTQKANG
 RLDQTDTIQVFKSEMENVNTLNAIQVNLNGHMKNASREIQTLKQGMKNASALTSQTQMLDSNLQKASAE
 IQRLRGDLENTKALTMEIQEQSRLKTLHVVITSQEQLQRTQSLLQMVLLQGWKFNNGSLYYFSSVKKSW
 HEAEQFCVYQGAHLASVASKEEQAFVFEFTSKVYWIWGLDTRGTEGSRWTDGTFPNAQNKAPGSKGSC
 PLRKYIIVNSGMGACSFIDTPPCPWILSN

TRTRPLEQKLISEEDLAANDILDYKDDDDKV

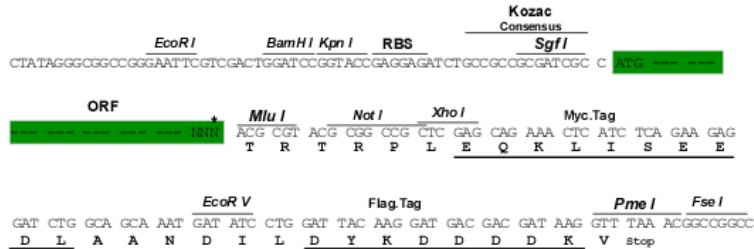
Chromatograms:

https://cdn.origene.com/chromatograms/mk8013_a02.zip

Restriction Sites: SgfI-MluI

Cloning Scheme:

Cloning sites used for ORF Shuttling:



* The last codon before the Stop codon of the ORF

ACCN: NM_173535

ORF Size: 1767 bp

OTI Disclaimer: The molecular sequence of this clone aligns with the gene accession number as a point of reference only. However, individual transcript sequences of the same gene can differ through naturally occurring variations (e.g. polymorphisms), each with its own valid existence. This clone is substantially in agreement with the reference, but a complete review of all prevailing variants is recommended prior to use. [More info](#)

OTI Annotation: This clone was engineered to express the complete ORF with an expression tag. Expression varies depending on the nature of the gene.

Components: The ORF clone is ion-exchange column purified and shipped in a 2D barcoded Matrix tube containing 10ug of transfection-ready, dried plasmid DNA (reconstitute with 100 ul of water).

- Reconstitution Method:
1. Centrifuge at 5,000xg for 5min.
 2. Carefully open the tube and add 100ul of sterile water to dissolve the DNA.
 3. Close the tube and incubate for 10 minutes at room temperature.
 4. Briefly vortex the tube and then do a quick spin (less than 5000xg) to concentrate the liquid at the bottom.
 5. Store the suspended plasmid at -20°C. The DNA is stable for at least one year from date of shipping when stored at -20°C.

RefSeq: [NM_173535.3](#)

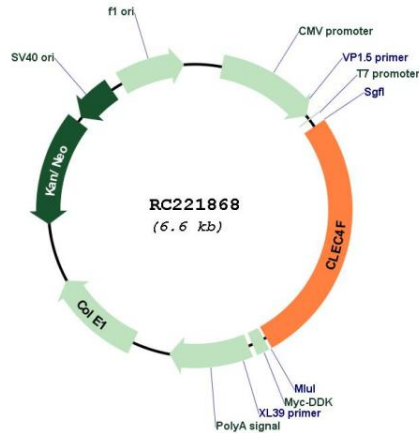
RefSeq Size: 2486 bp

RefSeq ORF: 1770 bp

Locus ID: 165530

UniProt ID: [Q8N1N0](#)
 Cytogenetics: 2p13.3
 Protein Families: Druggable Genome, Transmembrane
 MW: 65.3 kDa
 Gene Summary: Receptor with an affinity for galactose and fucose. Could be involved in endocytosis (By similarity).[UniProtKB/Swiss-Prot Function]

Product images:



Circular map for RC221868