

## Product datasheet for **RC221858**

### ACTBL2 (NM\_001017992) Human Tagged ORF Clone

#### Product data:

Product Type:	Expression Plasmids
Product Name:	ACTBL2 (NM_001017992) Human Tagged ORF Clone
Tag:	Myc-DDK
Symbol:	ACTBL2
Synonyms:	ACT
Mammalian Cell Selection:	Neomycin
Vector:	pCMV6-Entry (PS100001)
E. coli Selection:	Kanamycin (25 ug/mL)
ORF Nucleotide Sequence:	>RC221858 representing NM_001017992 Red=Cloning site Blue=ORF Green=Tags(s)

TTTTGTAATACGACTCACTATAGGGCGGCCGGAATTCGTCGACTGGATCCGGTACCGAGGAGATCTGCC  
GCC**CGGATCGCC**

ATGACTGACAATGAGCTGTCTGCCTTGGTAGTGGATAATGGGTCAGGGATGTGCAAGGCAGGCTTTGGTG  
GTGACGATGCCCCCGGGCTGTGTTCCCTCCATGATAGGGCGTCTCGACACCAGGGCGTTATGGTAGG  
CATGGGCCAGAAGGACTGCTACGTGGGAGATGAGGCTCAGAGCAAGAGAGGCGTCTGACCCTGAAGTAT  
CCTATCGAGCATGGAGTGGTACCAACTGGGACGATATGAAAAAGATCTGGTACCACACATTCTACAATG  
AGCTCCGTGTGGCACCAGATGAGCATCCCATCCTCCTCACGAGGCACCCCTGAACCCCAAGATCAACCG  
GGAAAAGATGACTCAGATCATGTTTCGAGGCTTTCAACACACCAGCCATGTATGTCGCCATCCAGGCTGTG  
CTGTCCCTCTATGCCTCAGGACGGACCACAGGCATCGTGATGGATTCTGGGGATGGGGTCACTCACATCG  
TGCCCATCTATGAAGTTATGCCCTGCCTCATGCCATTCTACGCCTGGATCTGGCAGGGAGAGACCTGAC  
TGATTACCTCATGAAGATCCTGACAGAGCGAGGCTATAACTTCACCACCCTGCTGAGCGGGAGATTGTG  
CGAGATGTCAAAGAGAAGCTGTGCTACGTAGCCCTGGACTTTGAGCAGGAGATGGTCAGGGCAGCCGCAT  
CCTCCTCACCGGAACGGAGCTATGAACCTCCTGATGGGCAGGTGATCACCATTGGGAATGAACGCTTCCG  
ATGCCCTGAAGCCATTTCCAGCCTTCTTTCTGGGCATTGAGTCCAGTGGGATCCATGAGACAACCTTC  
AACTCTATCATGAAGTGCATGTGGATATTCGCAAGGATCTCTATGCCAACCCGTGTTATCTGGAGGGA  
GCACCATGTACCCAGGCAATTGCTGACAGGATGCAGAAAGAAATCATAACCCTGGCACCCAGCACCATGAA  
AATCAAGATCATAGCTCCCCAGAGCGGAAGTATTCTGTTTGGATTGGGGCTCCATCCTTGCCAGCCTG  
TCCACATTCCAGCAGATGTGGATCAGTAAGCAGGAATATGATGAGGCTGGTCTCTATCGTTCACAGAA  
AATGTTTC

**ACGCGT**ACGCGGCCGCTCGAGCAGAAACTCATCTCAGAAGAGGATCTGGCAGCAATGATATCCTGGATT  
ACAAGGATGACGACGATAAGGTTTAA



[View online »](#)

**Protein Sequence:** >RC221858 representing NM\_001017992  
Red=Cloning site Green=Tags(s)

MTDNELSALVVDNGSGMCKAGFGGDDAPRAVFPSPMIGRPRHQGMVGMGQKDCYVGDQAQSKRGVLTLY  
 PIEHGVVTNWDDMEKIWHYHTFYNELRVAPDEHPILLTEAPLNPKINREKMTQIMFEAFNTPAMYVAIQAV  
 LSLYASGRRTGI VMDSGDGVTHIVPIYEGYALPHAILRLDLGRDLTDYLMKILTERGYNFTTAEREIV  
 RDVKEKLCYVALDFEQEMVRAAASSSPERSYELPDGQVITIGNERFRCPEAIFQPSFLGISSGIHETTF  
 NSIMKCDVDIRKDLAYNTVLGGSTMPYGIADRMQKEIITLAPSTMKIKIIAPPERKYSVWIGGSILASL  
 STFQQMWISKQEYDEAGPPIVHRKCF

TRTRPLEQKLISEEDLAANDILDYKDDDDKV

**Chromatograms:** [https://cdn.origene.com/chromatograms/mk8040\\_b06.zip](https://cdn.origene.com/chromatograms/mk8040_b06.zip)

**Restriction Sites:** SgfI-MluI

**Cloning Scheme:**



**ACCN:** NM\_001017992

**ORF Size:** 1128 bp

**OTI Disclaimer:** The molecular sequence of this clone aligns with the gene accession number as a point of reference only. However, individual transcript sequences of the same gene can differ through naturally occurring variations (e.g. polymorphisms), each with its own valid existence. This clone is substantially in agreement with the reference, but a complete review of all prevailing variants is recommended prior to use. [More info](#)

**OTI Annotation:** This clone was engineered to express the complete ORF with an expression tag. Expression varies depending on the nature of the gene.

**Components:** The ORF clone is ion-exchange column purified and shipped in a 2D barcoded Matrix tube containing 10ug of transfection-ready, dried plasmid DNA (reconstitute with 100 ul of water).

**Reconstitution Method:**

1. Centrifuge at 5,000xg for 5min.
2. Carefully open the tube and add 100ul of sterile water to dissolve the DNA.
3. Close the tube and incubate for 10 minutes at room temperature.
4. Briefly vortex the tube and then do a quick spin (less than 5000xg) to concentrate the liquid at the bottom.
5. Store the suspended plasmid at -20°C. The DNA is stable for at least one year from date of shipping when stored at -20°C.

**RefSeq:** [NM\\_001017992.4](#)

**RefSeq Size:** 2815 bp

**RefSeq ORF:** 1131 bp

**Locus ID:** 345651

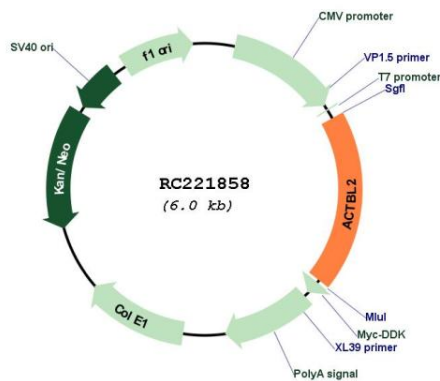
**UniProt ID:** [Q562R1](#)

**Cytogenetics:** 5q11.2

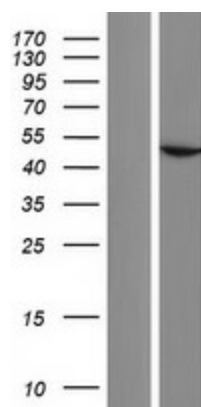
**MW:** 41.8 kDa

**Gene Summary:** Actins are highly conserved proteins that are involved in various types of cell motility and are ubiquitously expressed in all eukaryotic cells.[UniProtKB/Swiss-Prot Function]

**Product images:**



Circular map for RC221858



Western blot validation of overexpression lysate (Cat# [LY422231]) using anti-DDK antibody (Cat# [TA50011-100]). Left: Cell lysates from untransfected HEK293T cells; Right: Cell lysates from HEK293T cells transfected with RC221858 using transfection reagent MegaTran 2.0 (Cat# [TT210002]).