

Product datasheet for **RC221857**

CYS1 (NM_001037160) Human Tagged ORF Clone

Product data:

Product Type: Expression Plasmids
 Product Name: CYS1 (NM_001037160) Human Tagged ORF Clone
 Tag: Myc-DDK
 Symbol: CYS1
 Mammalian Cell Selection: Neomycin
 Vector: pCMV6-Entry (PS100001)
 E. coli Selection: Kanamycin (25 ug/mL)
 ORF Nucleotide Sequence: >RC221857 representing NM_001037160
 Red=Cloning site Blue=ORF Green=Tags(s)

TTTTGTATACGACTCACTATAGGGCGGCCGGAATTCGTCGACTGGATCCGGTACCGAGGAGATCTGCC
 GCC**CGATCGCC**

ATGGGCAGCGGCAGCAGCCGGAGCAGCCGGACTCTGAGGCGGCGGCGCAGCCCCGAGAGCCTCCCCGCGG
 GGCCCGGAGCGGCAGCCCTGGAGGGCGGGACCCGCCGGGTGCCGGTGGCGGCGGCCGAGGTCCCGGG
 GGCAGCCGCGGAGGAGCGCCCGCCGCGACCCAGCCCCGTGGCGCCCCCGACGGCAGGGACGAGACG
 CTGCGCCTGCTGGACGAGCTGCTGGCCGAGTCGGCGGCCCTGGGGCCCCCGGAGCCCCCGCGCCGCC
 CAGCCCCGCTCCGACCCACCGCGGTGCGGGGAGCGCGGTGTGCGCAGAGCAGACAGAGGGCCACCC
 GGGGAGCGGCAATGTCTCTGAAGCCCCAGGCAGCGGTGCGAAGAAGCCCGAGAGGCCGGCAGCCATCTCC
 TACGACCACTCGGAAGAGGGGCTGATGGCGAGCATCGAGCGGGAGTACTGCCGC

ACGCGTACGCGGCCGCTCGAGCAGAACTCATCTCAGAAGAGGATCTGGCAGCAAATGATATCCTGGATT
 ACAAGGATGACGACGATAAGGTTTAA

Protein Sequence: >RC221857 representing NM_001037160
 Red=Cloning site Green=Tags(s)

MSGSSRSRTLRRRSPESLPAGPGAAALEGGTRRRVPVAAAEVPGAAEEAPGRDPSPVAPPDGRDET
 LRLLELLAESAAGWPPEPAPRRPARLRPTAVAGSAVCAEQSTEGHPGSGNVSEAPGSGRKKPERPAAIS
 YDHSEGLMASIEREYCR

TRTRPLEQKLISEEDLAANDILDYKDDDDKV

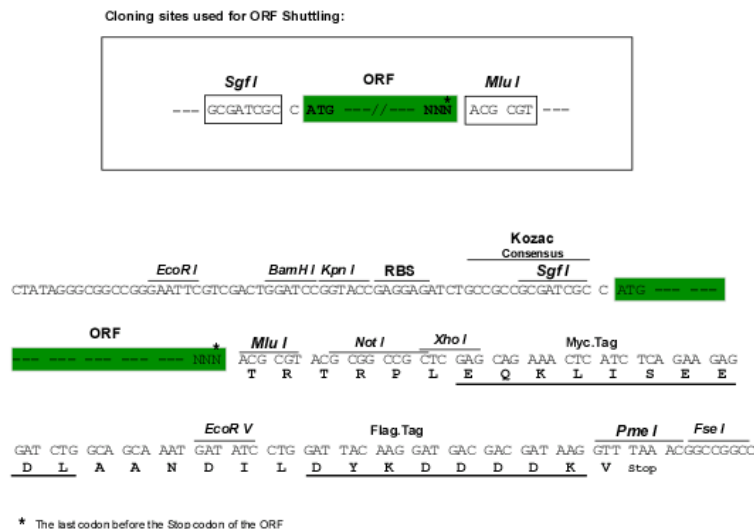
Chromatograms: https://cdn.origene.com/chromatograms/mk8040_b07.zip

Restriction Sites: SgfI-MluI



[View online »](#)

Cloning Scheme:



ACCN: NM_001037160

ORF Size: 474 bp

OTI Disclaimer: Due to the inherent nature of this plasmid, standard methods to replicate additional amounts of DNA in E. coli are highly likely to result in mutations and/or rearrangements. Therefore, OriGene does not guarantee the capability to replicate this plasmid DNA. Additional amounts of DNA can be purchased from OriGene with batch-specific, full-sequence verification at a reduced cost. Please contact our customer care team at custsupport@origene.com or by calling 301.340.3188 option 3 for pricing and delivery.

The molecular sequence of this clone aligns with the gene accession number as a point of reference only. However, individual transcript sequences of the same gene can differ through naturally occurring variations (e.g. polymorphisms), each with its own valid existence. This clone is substantially in agreement with the reference, but a complete review of all prevailing variants is recommended prior to use. [More info](#)

OTI Annotation: This clone was engineered to express the complete ORF with an expression tag. Expression varies depending on the nature of the gene.

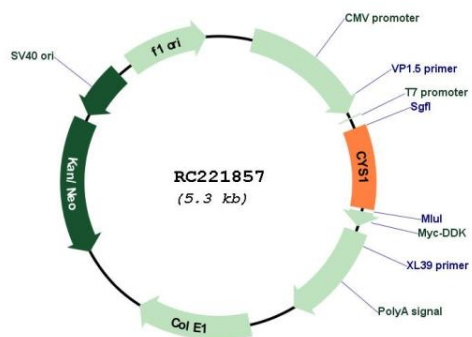
Components: The ORF clone is ion-exchange column purified and shipped in a 2D barcoded Matrix tube containing 10ug of transfection-ready, dried plasmid DNA (reconstitute with 100 ul of water).

Reconstitution Method:

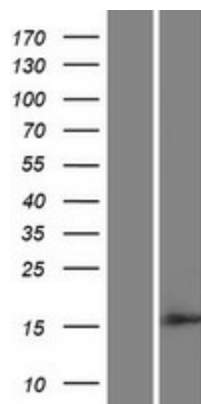
1. Centrifuge at 5,000xg for 5min.
2. Carefully open the tube and add 100ul of sterile water to dissolve the DNA.
3. Close the tube and incubate for 10 minutes at room temperature.
4. Briefly vortex the tube and then do a quick spin (less than 5000xg) to concentrate the liquid at the bottom.
5. Store the suspended plasmid at -20°C. The DNA is stable for at least one year from date of shipping when stored at -20°C.

RefSeq: [NM_001037160.2](#), [NP_001032237.1](#)
 RefSeq Size: 779 bp
 RefSeq ORF: 477 bp
 Locus ID: 192668
 UniProt ID: [Q717R9](#)
 Cytogenetics: 2p25.1
 MW: 16.2 kDa

Product images:



Circular map for RC221857



Western blot validation of overexpression lysate (Cat# [LY422152]) using anti-DDK antibody (Cat# [TA50011-100]). Left: Cell lysates from untransfected HEK293T cells; Right: Cell lysates from HEK293T cells transfected with RC221857 using transfection reagent MegaTran 2.0 (Cat# [TT210002]).