

Product datasheet for **RC221849**

MAPKBP1 (NM_014994) Human Tagged ORF Clone

Product data:

Product Type:	Expression Plasmids
Product Name:	MAPKBP1 (NM_014994) Human Tagged ORF Clone
Tag:	Myc-DDK
Symbol:	MAPKBP1
Synonyms:	JNKBP-1; JNKBP1; NPHP20
Mammalian Cell Selection:	Neomycin
Vector:	pCMV6-Entry (PS100001)
E. coli Selection:	Kanamycin (25 ug/mL)
ORF Nucleotide Sequence:	>RC221849 representing NM_014994 Red=Cloning site Blue=ORF Green=Tags(s)

TTTTGTAATACGACTCACTATAGGGCGGCCGGAATTCGTCGACTGGATCCGGTACCGAGGAGATCTGCCGCC**CGATCGCC**

ATGGCTGTGGAAGGGTCAACCATACCAGCCGGATCAAGAATCTGTTGAGATCTCCATCCATCAAAGTGC
GCAGGAGTAAGGCAGGAAACCGACGAGAGGACCTCAGCTCCAAGGTGACCTTGGAGAAGGTGCTGGGAAT
TACAGTGTCTGGAGGCAGAGGACTTGCCTGTGACCCCGATCAGGTTTAGTTGCTACCCAGCAGGGTGT
GTGGTTGTGTTTCAATCCCCGAAACACAAACAGCACCACATCCTCAACAGTTCAGGAAAACCATCA
CTGCCCTTGCCTTCTCCCTGATGGCAAGTACTTGGTCACTGGAGAGAGTGGGCACATGCCTGCCGTGCG
GGTTTGGGACGTGGCAGAGCACAGCCAGGTGGCCGAGCTGCAGGAGCACAAAGTATGGTGTGGCTTGTGTG
GCCTTCTCCTAGCGCCAAGTACATTGTCTCTGTGGGCTACCAGCATGACATGATCGTCAACGTGTGGG
CCTGGAAGAAAAACATTGTGGTGGCCTCCAACAAGGTGTCCAGTCCGGGTGACAGCAGTGTCTTCTCTGA
GGATTGCAGTACTTTGTCACTGCAGGCAACCGACACATCAAATCTGGTATCTCGATGACAGCAAGACC
TCAAAGGTGAATGCCACTGTGCCCTTGTGGCCGCTCAGGGTGTCTGGGAGAGCTACGGAACAACCTAT
TCACTGATGTGGCCTGTGGCAGAGGAAAAAGGCGGACAGTACCTTCTGCATCACGTCTCAGGGCTGT
GTGCGAGTTCAGTGATCGAAGGCTTTGGACAAGTGGGTGGAGCTGAGGACCACAGTGGCCCACTGCATC
TCTGTGAGCCAAGACTACATCTTCTGTGGCTGTGCTGATGGCACCGTGGCCTTTCAACCCCTTAACC
TGCACTTCTTAGCACCTTGCCCGACCCCATGCTCTGGGACAGACATTGCTAGCGTCACCGAGGCCAG
TCGCCTTCTCTGGAGTGGCGAATGCCAGGTATCCAGACACCATTGCCTTGACCTTTGATCCTACTAAT
CAGTGGCTGTCTTGTGTACAACGATCATAGCATTTATGTTGGGATGTGAGGGACCCCAAGAAAGTGG
GCAAGGTGTAAGGCTCTGTATCATTCTCTGCGTCTGGAGTGTGGAGGTCTACCCGAGGTGAAGGA
TAGTAACAGGCCTGCCTGCCCCCAGTTCCTTTATTACCTGCTCCTCAGACAACACCATCCGCCTGTGG
AACACAGAGAGCTCCGGGTGCATGGCTCCACCCTCCACCGAAACATCCTCAGCAGTGACCTCATTA
TCATCTATGTGGATGGGAACACCAGGCCCTGCTGGACACAGAGCTGCCTGGAGGAGACAAAGCTGATGC
ATCCCTGTGGATCCCCGCTGGGCATCCGCTCGGTGTGTGTCAGCCCCAATGGACAGCATCTAGCATCA



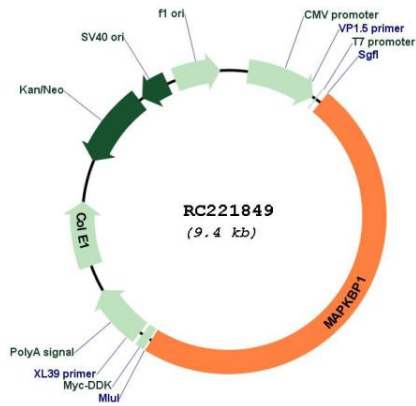
[View online >](#)

GGGGACCGTATGGGCACACTTAGGGTGCACGAACCTCAGTCCCTGAGTGAGATGCTGAAGGTGGAGGCC
 ATGACTCTGAGATTCTGTGCCTGGAGTATTCTAAGCCAGACACAGGTCTGAAACTGCTAGCATCGGCGAG
 CCGGGACCGGCTGATCCATGTGCTGGATGCCGGGCGGGAGTACAGCCTACAGCAGACGCTGGACGAACAC
 TCATCCTCCATCACTGCTGTCAAGTTTGCAGCCAGTGTGGGCAAGTCCGCATGATCAGCTGTGGAGCAG
 ACAAGAGCATCTACTCCGCACTGCGCAGAAGTCTGGAGATGGAGTGCAGTTCACACGGACACACCAGT
 GGTGCGGAAGACGACCCCTCATGACATGGATGTGGAGCCAGCTGGAAGTACACGGCTATCGGCTGCCAG
 GACCGAAATATTCGATATTTAACATCAGCAGTGGAAAGCAGAAGAAGCTGTTTAAAGGGTACAGAGGTG
 AGGACGGCACACTCATTAAAGGTGCAGACAGACCCCTCAGGGATCTACATTGCCACCAGCTGTTCTGACAA
 GAATCTCTCCATTTTGACTTCTCCTCAGGCGAGTGCCTGGCCACCATGTTTGGCCACTCAGAGATTGTC
 ACTGGCATGAAATTTAGTAATGATTGTAACATCTCATCTCTGTGTCTGGGGACAGCTGCATATTTGTGT
 GGGCCTGAGCTCTGAGATGACCATCAGCATGAGGCAGCGTCTGGCCGAGTTGCGCCAGCGTCAGCGGGG
 CGGCAAGCAGCAAGGACCATCCTCTCCCAAAGGGCTTCTGGACCAACCGGCACCAGGCCCATCAATG
 CTGTCTCTGGACCGCTCTCTCATCAGACAGTACAAGGAGGGAAGATGAGGGGACTGAAGAAGAAC
 TTCCAGCACTGCCGCTCTTCCAAAGAGTACCAAGAAGGCACTGGCCTCGGTCCCAGCCAGCTTTGCC
 CCGAAGCCTGTCCACTGGGAGATGAGTGGGCACAGGAGTCCGTGGGGTTCCTGGACCCAGCTCCTGCA
 GCCAACCCAGGACCCAGAAGAAGAGGGCCCTGGGTTACAGCCAGGTGTGGAAGTACAGCGTTAGATCCATGC
 TGGATCTGCGGCAGCTGGAAACTGGCCCAAGCCTGCAGGACCCTAGCCAGGACTCGCTGGCCATCAT
 CCCATCTGGTCCCAGGAAGCATGGGCAGGAGGCCCTTGAGACTTCACTACTAGCCAGAATGAAAAGCCC
 CCTCGGCCTCAGGCTTCCAACCTTGTTCTATCCCCATATTATCCGATTATTGTACAAGAGGAAGGGG
 TCTTTGCCAAGATCTGGAACCTGCACCATTGAAGATGGTATTGTCTACCCGGAGCCGAGTGACAACCC
 CACCATGGATACCAGTGAATCCAAAGTGCAGGCTCCAGCCCGGGAACTCTGGGAAGAGTGTACCCAGGC
 AGCAGGAGCTCAGAAAAGCACAGCCCTGACAGTGCCTGCTCTGTGGATTACAGCAGCAGCTGCCTTTCCA
 GCCGGAGCACCCCACTGAAGACTCTGAGAGCACGGAGCCCTCAGTGTGGATGGCATCTCCTCAGACT
 TGAAGAGCCAGCTGAGGGTGATGAAGAAGAGGAAGAAGAGGAGGAGGCATGGGCCCTATGGGCTACAG
 GAGGGCAGCCCCAGACTCCAGACCAGGAGCAGTTTCTAAAACAGCACTTTGAGACTCTGGCCAGTGGAG
 CTGCTCCAGGGGCCAGTGCAGGTCCCAGAGAGGTGAGAGTCTCGGAGTATCTTTCACGATTCTGTT
 GCAAGTACAGACCCGCCACTCAGGGAACCATCCCCATCCTCCTCAAGCCTGGCACTGATGTCGAGACCA
 GCCCAGGTGCCACAGGCATCTGGTGAGCAGCCGAGAGGCAATGGTGCCAATCCCCCTGGAGCACCCCGG
 AGGTGGAACCGTCTCTGGCAACCCAGCCCCAGCAGGCAGCCTCTGTGCTGTTGCCACGATGCCGTCT
 CAACCTGACAGCAGCTGGGCTCCCAAGAGAGTGGCCACAGCCAGCCCTTTTCTGGACTCCAGAAGGCC
 CAGTCTGTGCACAGTCTGGTGCCACAGGAAAGACATGAGGCCAGTCTGCAGGCCCTTACCAGGCGCAC
 TGCTGTCTCGGGAGATCGAAGCTCAGGATGGTCTGGGCTCCCTGCCCCAGCTGATGGCCCTCCGTCTCG
 GCCTCACTCCTATCAGAACCCACCACCAGTTCATGGCCAAGATATCCCGCAGTATCTCTGTTGGGGAG
 AACCTGGGCTGGTGGCTGAACCTCAAGCTCATGCCCCATCCGAGTCTCACCCTCAGCAAGCTGGCCC
 TGCCAGCCGGGCTCACCTGGTCTGGACATCCCCAAACCACTGCCTGACCGTCTTACCCTGGCTGCATT
 CTCTCCTGTACCAAAGGCCGGGCCCTGGCGAGGCAGAAAAGCCTGGCTTCCCGGTGGGCTAGGAAAA
 GCTCACAGTACAAGTGAAGATGGGCTGTTTGGGGAGGGCACCCTCCAAGCCTAGGACAGAGTGGC
 AACTTGCAGCCCCACCCCTGAGAAGACTCCAACCCATGGAATGCACCAAGCCAGGGGACGCCCTG
 AGCCAGGACTCAGAGCCAGCGGTGAGCCTGGAGCAGTGTGAGCAGCTGGTGGCAGAGCTCCGCGGACGG
 TGCGCCAGGCAGTGGGCTCTACCACTCGGTGGCTGGCTGCAGGATGCCCTCAGCAGAGCAAAGTGGAT
 TGCCAGCTCCTCAGAGACACTTCTTTCAGTGCACAGGAGCTGGAAGCTGTGGCTGGGGCAGTGTG
 TCCAGCCAGGCAGCAGCCCTGGGGCTGTGGGAGCCGAGCAGACACAGGCCCTGTGGAGCAATACTCAG
 AACTGTTGCTTCGAGCCGTGGAACGGCGTATGGAACGCAAACCTC

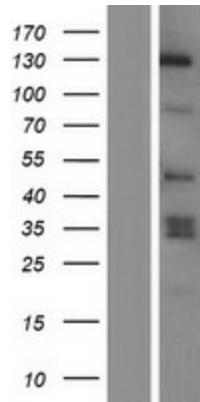
ACGGCTACGCGGCCGCTCGAGCAGAAACTCATCTCAGAAGAGGATCTGGCAGCAATGATATCCTGGATT
 ACAAGGATGACGACGATAAGGTTTAA

ORF Size:	4524 bp
OTI Disclaimer:	The molecular sequence of this clone aligns with the gene accession number as a point of reference only. However, individual transcript sequences of the same gene can differ through naturally occurring variations (e.g. polymorphisms), each with its own valid existence. This clone is substantially in agreement with the reference, but a complete review of all prevailing variants is recommended prior to use. More info
OTI Annotation:	This clone was engineered to express the complete ORF with an expression tag. Expression varies depending on the nature of the gene.
Components:	The ORF clone is ion-exchange column purified and shipped in a 2D barcoded Matrix tube containing 10ug of transfection-ready, dried plasmid DNA (reconstitute with 100 ul of water).
Reconstitution Method:	<ol style="list-style-type: none">1. Centrifuge at 5,000xg for 5min.2. Carefully open the tube and add 100ul of sterile water to dissolve the DNA.3. Close the tube and incubate for 10 minutes at room temperature.4. Briefly vortex the tube and then do a quick spin (less than 5000xg) to concentrate the liquid at the bottom.5. Store the suspended plasmid at -20°C. The DNA is stable for at least one year from date of shipping when stored at -20°C.
RefSeq:	NM_014994.1 , NP_055809.1
RefSeq Size:	7174 bp
RefSeq ORF:	4527 bp
Locus ID:	23005
UniProt ID:	O60336
Cytogenetics:	15q15.1
Protein Families:	Druggable Genome
MW:	163 kDa
Gene Summary:	This gene encodes a scaffold protein that regulates the JNK (c-Jun N-terminal kinase) and NOD2 (nucleotide-binding oligomerization domain-containing protein 2) signaling pathways. The encoded protein interacts with another related JNK pathway scaffold protein, WDR62, via a conserved dimerization domain, and enhances JNK signaling. This protein may play a role in bacterial immunity by binding to the NOD2 receptor and negatively regulating downstream antibacterial and pro-inflammatory signaling. Mutations in this gene that impair cellular localization of the encoded protein cause a form of nephronophthisis, an autosomal-recessive kidney disorder, in human patients. [provided by RefSeq, May 2017]

Product images:



Circular map for RC221849



Western blot validation of overexpression lysate (Cat# [LY414887]) using anti-DDK antibody (Cat# [TA50011-100]). Left: Cell lysates from untransfected HEK293T cells; Right: Cell lysates from HEK293T cells transfected with RC221849 using transfection reagent MegaTran 2.0 (Cat# [TT210002]).