

Product datasheet for **RC221845**

MID1IP1 (NM_001098791) Human Tagged ORF Clone

Product data:

Product Type: Expression Plasmids
Product Name: MID1IP1 (NM_001098791) Human Tagged ORF Clone
Tag: Myc-DDK
Symbol: MID1IP1
Synonyms: G12-like; MIG12; S14R; STRAIT11499; THRSPL
Mammalian Cell Selection: Neomycin
Vector: pCMV6-Entry (PS100001)
E. coli Selection: Kanamycin (25 ug/mL)
ORF Nucleotide Sequence: >RC221845 ORF sequence
Red=Cloning site Blue=ORF Green=Tags(s)

TTTTGTAATACGACTCACTATAGGGCGCCGGGAATTCGTCGACTGGATCCGGTACCGAGGAGATCTGCC
GCC**CGGATCGCC**

ATGATGCAAACTCTGCGACACCTACAACCAGAAGCACTCGCTCTTTAACGCCATGAATCGCTTCATTGGCG
CCGTGAACAACATGGACCAGACGGTGATGGTGCCAGCTTGCTGCGCGACGTGCCCTGGCTGACCCCGG
GTTAGACAACGATGTTGGCGTGGAGGTAGGCGGCAGTGGCGGCTGCCTGGAGGAGCGCACCCCCAGTC
CCCGACTCGGGAAGCGCAATGGCAGCTTTTTCGCGCCCTCTCGGACATGTACAGCCACTACGTGCTTC
TCAAGTCCATCCGCAACGACATCGAGTGGGGGTCTGCACCAGCCGCTCCACCGGCTGGGAGCGAGGA
GGGCAGTGCCTGGAAGTCCAAGGACATCCTGGTGACCTGGGCCACTGGAGGGTGGGACGCCGCGGAA
GAAGACCTGGAACAGCAGTTCCTACTACCCTGCGCGGGTGCACACTGTGCTCTCGAAACTCACGCGCA
AAGCCAACATCCTCACTAACAGATAAAGCAGGAGATCGGCTTCGGCAATTGGGGCCAC

ACGCGTACGCGGCCGCTCGAGCAGAACTCATCTCAGAAGAGGATCTGGCAGCAAATGATATCCTGGATT
ACAAGGATGACGACGATAAGGTTTAA

Protein Sequence: >RC221845 protein sequence
Red=Cloning site Green=Tags(s)

MMQICDTYNQKHSLEFNAMNRFI GAVNNMDQTMVPSLLRDVPLADPGLDNDVGVVEGGSGGLEERTPPV
PDSGSANGSFFAPSRDMYSHYVLLK SIRNDIEWGLHQP PPPAGSEEGSAWKS KDILVDLGHLEGADAGE
EDLEQQFHYHLRGLHTVLSKLRKANIL TNRYKQEI GFGNWGH

TRTRPLEQKLISEEDLAANDILDYKDDDDKV

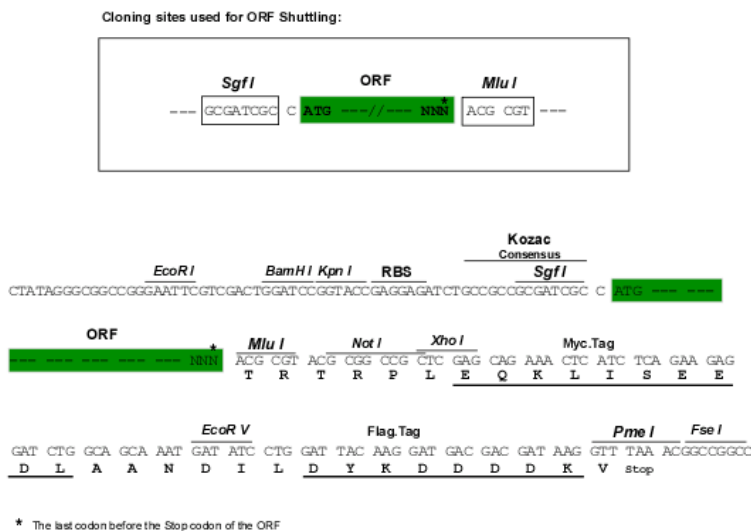
Chromatograms: https://cdn.origene.com/chromatograms/mk6079_g11.zip



[View online »](#)

Restriction Sites: SgfI-MluI

Cloning Scheme:



ACCN: NM_001098791

ORF Size: 549 bp

OTI Disclaimer: The molecular sequence of this clone aligns with the gene accession number as a point of reference only. However, individual transcript sequences of the same gene can differ through naturally occurring variations (e.g. polymorphisms), each with its own valid existence. This clone is substantially in agreement with the reference, but a complete review of all prevailing variants is recommended prior to use. [More info](#)

OTI Annotation: This clone was engineered to express the complete ORF with an expression tag. Expression varies depending on the nature of the gene.

Components: The ORF clone is ion-exchange column purified and shipped in a 2D barcoded Matrix tube containing 10ug of transfection-ready, dried plasmid DNA (reconstitute with 100 ul of water).

Reconstitution Method:

1. Centrifuge at 5,000xg for 5min.
2. Carefully open the tube and add 100ul of sterile water to dissolve the DNA.
3. Close the tube and incubate for 10 minutes at room temperature.
4. Briefly vortex the tube and then do a quick spin (less than 5000xg) to concentrate the liquid at the bottom.
5. Store the suspended plasmid at -20°C. The DNA is stable for at least one year from date of shipping when stored at -20°C.

RefSeq: [NM_001098791.1](#), [NP_001092261.1](#)

RefSeq Size: 1916 bp

RefSeq ORF: 552 bp

Locus ID: 58526

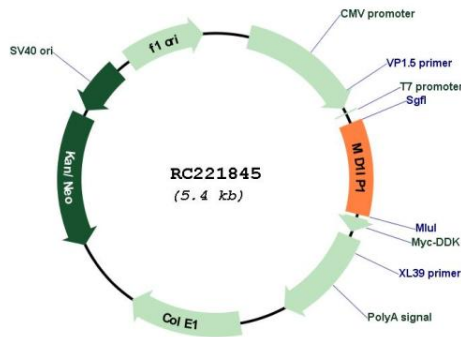
UniProt ID: [Q9NPA3](#)

Cytogenetics: Xp11.4

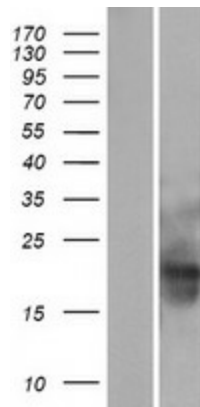
MW: 20.2 kDa

Gene Summary: Plays a role in the regulation of lipogenesis in liver. Up-regulates ACACA enzyme activity. Required for efficient lipid biosynthesis, including triacylglycerol, diacylglycerol and phospholipid. Involved in stabilization of microtubules (By similarity).[UniProtKB/Swiss-Prot Function]

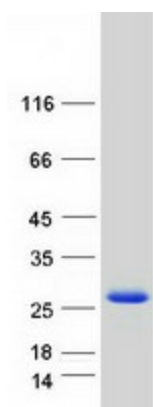
Product images:



Circular map for RC221845



Western blot validation of overexpression lysate (Cat# [LY400445]) using anti-DDK antibody (Cat# [TA50011-100]). Left: Cell lysates from untransfected HEK293T cells; Right: Cell lysates from HEK293T cells transfected with RC221845 using transfection reagent MegaTran 2.0 (Cat# [TT210002]).



Coomassie blue staining of purified MID1IP1 protein (Cat# [TP321845]). The protein was produced from HEK293T cells transfected with MID1IP1 cDNA clone (Cat# RC221845) using MegaTran 2.0 (Cat# [TT210002]).