

Product datasheet for **RC221841**

TTLL9 (NM_001008409) Human Tagged ORF Clone

Product data:

Product Type:	Expression Plasmids
Product Name:	TTLL9 (NM_001008409) Human Tagged ORF Clone
Tag:	Myc-DDK
Symbol:	TTLL9
Synonyms:	C20orf125
Mammalian Cell Selection:	Neomycin
Vector:	pCMV6-Entry (PS100001)
E. coli Selection:	Kanamycin (25 ug/mL)



[View online »](#)

ORF Nucleotide Sequence:

>RC221841 representing NM_001008409
 Red=Cloning site Blue=ORF Green=Tags(s)

TTTTGTAATACGACTCACTATAGGGCGGCCGGAATTCGTCGACTGGATCCGGTACCGAGGAGATCTGCC
 GCC**CGGATCGCC**

ATGGTGCCATCCAGGAAGCTCTGCTGGGACCAGGCACAACCTGCCATTAGGTGCCCAAGAAATTACAGA
 ACCAAAATTACAAGGCCATGGATTGTCAAAGGAAAAGAGCGAGAGCAGAGAGCATCGATCCGGTTCAA
 GACCACCCTCATGAACACACTCATGAGCTCCTTCGCCACAGGCCAGGATGGGTGGAAGTGAAGGACGAA
 GGGGAGTGGGATTTCTACTGGTGTGACGTGAGCTGGCTCCGGGAGAACTTCGACCACACCTACATGGATG
 AACATGTGCGGATCAGTCACTTCGGAACCACTATGAGCTGACCCGGAAGAACTACATGGTGAAGAACCT
 GAAGCGGTTCCGGAAGCAGCTGGAGCGTGAGGCAGGAAAGCTGGAGGCAGCCAAGTGTGACTTCTCCCC
 AAAACCTTTGAGATGCCTTGGCAGTACCACCTGTTTGTAGAGGAGTTTCGAAAAACCCAGGAATCACCT
 GGATCATGAAGCCTGTAGCCCGTCTCAAGGGAAGGCATCTTCCTCTCCGTAGGCTGAAGGACATCGT
 GGACTGGAGGAAGGACACAAGAAGCTCTGACGACCAGAAAGATGATATCCCGTGGAGAACTATGTGGCT
 CAGCGTTACATTGAAAATCCTTACTGATAGGAGCCGCAAGTTTGACCTGCGTGTCTATGTGCTGGTGA
 TGTCGGTGTGGTGAATGCCTGCTGTGGTCTGGGCACAGGAGACAGGATGTTACCTCACCAACGTGGC
 TGTGCAAAAAACATCTCCCGACTACCACCAAAGAAGGGCTGCAAGTGGACGCTGACAGCGTTCGGCAG
 TACCTGGCGTCCAACACGGGCCGAGGAGTGGAGACTCTTCAGGGACATCGACAACATCTTTGTCA
 AAAGCCTGCAGAGTGTGAGAAGGTGATCATCAGTGACAAGCACTGCTTCGAGCTGTACGGCTATGACAT
 CCTCATCGACCAGGACCTCAAGCCGTGGCTCCTGGAGGTCAATGCGTCCCATCACTGACAGCCAGCAGC
 CAGGAAGACTATGAGCTCAAGACCTGCCTCCTGGAAGACCCCTGCATGTTGTGGACATGGAAGCGAGGC
 TCACGGGAAGGAGAAGCGAGTCGGGGCTTTGACCTCATGTGGAATGATGGCCCTGTTAGCAGAGAGGA
 GGGGGCTCTGACCTGTGCGGAATGGGAAACTTTGTGACCAACACACATCTCGGCTGCGTCAACGATCGG
 AAGAAACAACAGGAGCTCTTCTGCTCCCTCAAGTTCAGAAGAAAGCTTCCAGT

ACGCGTACGCGGCCGCTCGAGCAGAAACTCATCTCAGAAGAGGATCTGGCAGCAAATGATATCCTGGATT
 ACAAGGATGACGACGATAAGGTTTAA

Protein Sequence:

>RC221841 representing NM_001008409
 Red=Cloning site Green=Tags(s)

MVPSREALLGPGTTAIRCPKQLQNYKGHLSK GKEREQRASIRFKTLLMNTLMDVLRHRPGWVEVKDE
 GEWDFYWCDSWLRNFHDHYMDEHVRISHFRNHVELTRKNYMKNLKFRKQLEREAGKLEAAKCDFFP
 KTFEMPCEYHLFVEEFRKNPGITWIMKPVARSQKGI FLFRRLKDIVDRKDRSSDDQKDDIPVENYVA
 QRYIENPYLIGGRKFDLRVYVLMVSVFAECLLWSGHRRQDVHL TNVAVQKTSPTYHPKKGCKWTLQRFRQ
 YLASKHGPEAVETLFRIDNIFVKSLQSVQKVIISDKHCFELYGYDILIDQDLKPWLLEVNASPLTASS
 QEDYELKTCLLEDTLHVVDMEARLTGREKRVGGFDLMWNDGPVSRREGAPDL SGMGNFVTNHLGCVNDR
 KKQLRQLFCSLQVQKASS

TRTRPLEQKLISEEDLAANDILDYKDDDDKV

Chromatograms:

https://cdn.origene.com/chromatograms/mk8040_b10.zip

Restriction Sites:

Sgfl-Mlul

Cloning Scheme:


ACCN: NM_001008409

ORF Size: 1317 bp

OTI Disclaimer: The molecular sequence of this clone aligns with the gene accession number as a point of reference only. However, individual transcript sequences of the same gene can differ through naturally occurring variations (e.g. polymorphisms), each with its own valid existence. This clone is substantially in agreement with the reference, but a complete review of all prevailing variants is recommended prior to use. [More info](#)

OTI Annotation: This clone was engineered to express the complete ORF with an expression tag. Expression varies depending on the nature of the gene.

Components: The ORF clone is ion-exchange column purified and shipped in a 2D barcoded Matrix tube containing 10ug of transfection-ready, dried plasmid DNA (reconstitute with 100 ul of water).

Reconstitution Method:

1. Centrifuge at 5,000xg for 5min.
2. Carefully open the tube and add 100ul of sterile water to dissolve the DNA.
3. Close the tube and incubate for 10 minutes at room temperature.
4. Briefly vortex the tube and then do a quick spin (less than 5000xg) to concentrate the liquid at the bottom.
5. Store the suspended plasmid at -20°C. The DNA is stable for at least one year from date of shipping when stored at -20°C.

RefSeq: [NM_001008409.4](#)

RefSeq Size: 2624 bp

RefSeq ORF: 1320 bp

Locus ID: 164395

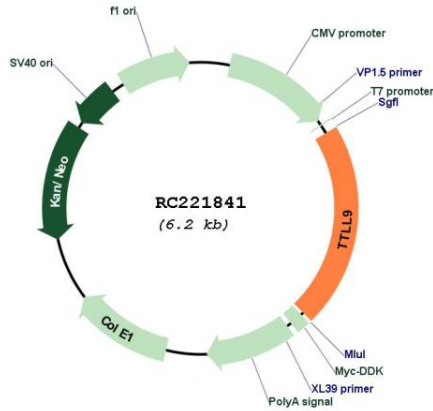
UniProt ID: [Q3SXZ7](#)

Cytogenetics: 20q11.21

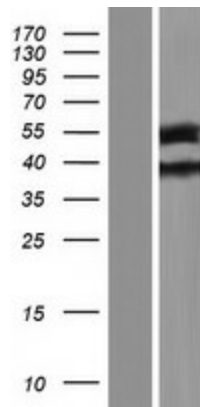
MW: 51.3 kDa

Gene Summary: Probable tubulin polyglutamylase that forms polyglutamate side chains on tubulin. Probably acts when complexed with other proteins (By similarity).[UniProtKB/Swiss-Prot Function]

Product images:



Circular map for RC221841



Western blot validation of overexpression lysate (Cat# [LY423431]) using anti-DDK antibody (Cat# [TA50011-100]). Left: Cell lysates from untransfected HEK293T cells; Right: Cell lysates from HEK293T cells transfected with RC221841 using transfection reagent MegaTran 2.0 (Cat# [TT210002]).