

## Product datasheet for RC221840

### RND2 (NM\_005440) Human Tagged ORF Clone

#### Product data:

Product Type:	Expression Plasmids
Product Name:	RND2 (NM_005440) Human Tagged ORF Clone
Tag:	Myc-DDK
Symbol:	RND2
Synonyms:	ARHN; RHO7; RhoN
Mammalian Cell Selection:	Neomycin
Vector:	pCMV6-Entry (PS100001)
E. coli Selection:	Kanamycin (25 ug/mL)
ORF Nucleotide Sequence:	>RC221840 ORF sequence Red=Cloning site Blue=ORF Green=Tags(s)

TTTTGTAATACGACTCACTATAGGGCGGCCGGAATTCGTCGACTGGATCCGGTACCGAGGAGATCTGCC  
GCC**CGATCGCC**

ATGGAGGGGCAGAGCGGCCGCTGCAAGATCGTGGTGGTGGGAGACGCAGAGTGCGGCAAGACGGCGCTGC  
TGCAGGTGTTCCGAAGGACGCCTATCCCGGGAGTTATGTCCCCACCGTGTGGAGAACTACACTGCGAG  
CTTTGAGATCGACAAGCGCCGATTGAGCTCAACATGTGGGACACTTCAGGTTCCCTTACTATGATAAT  
GTCCGGCCTCTGGCCTATCCTGATTCTGATGCTGTGCTCATCTGCTTCGACATTAGCCGACCAGAAACAC  
TGGACAGTGTCTCAAGAAGTGGCAAGGAGAGACTCAAGAGTTCTGCCCAATGCCAAGGTTGTGCTGGT  
TGGCTGTAAGTGGACATGCGGACTGACCTGGCCACACTGAGGGAGCTGTCCAAGCAGAGGCTTATCCCT  
GTTACACATGAGCAGGGCACTGTGCTGGCAAGCAGGTGGGGGCTGTGTCCTATGTTGAGTGCTCCCTCC  
GGTCTCTGAGCGCAGCGTCAGGGATGTCTTCCATGTGGCTACAGTGGCCTCCCTTGCCCGTGGCCATAG  
GCAGCTGCGCCGAAGTACTCACGCCGGGAATGCAGCGATCCGCTCAGCTGTGTCAGGACGGCCAGACCGG  
GGGAATGAGGGCGAGATACACAAGGATCGAGCCAAAAGCTGCAACCTCATG

**ACGCGT**ACGCGGGCCGCTCGAGCAGAACTCATCTCAGAAGAGGATCTGGCAGCAATGATATCCTGGATT  
ACAAGGATGACGACGATAAGGTTTAA



[View online »](#)



**Reconstitution Method:**

1. Centrifuge at 5,000xg for 5min.
2. Carefully open the tube and add 100ul of sterile water to dissolve the DNA.
3. Close the tube and incubate for 10 minutes at room temperature.
4. Briefly vortex the tube and then do a quick spin (less than 5000xg) to concentrate the liquid at the bottom.
5. Store the suspended plasmid at -20°C. The DNA is stable for at least one year from date of shipping when stored at -20°C.

**RefSeq:** [NM\\_005440.5](#)

**RefSeq Size:** 4169 bp

**RefSeq ORF:** 684 bp

**Locus ID:** 8153

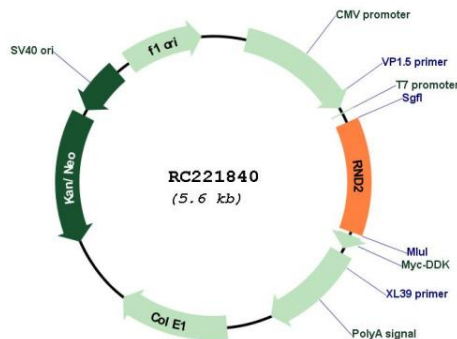
**UniProt ID:** [P52198](#)

**Cytogenetics:** 17q21.31

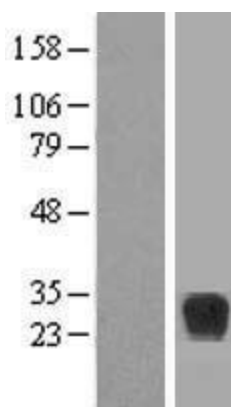
**MW:** 25.4 kDa

**Gene Summary:** This gene encodes a member of the Rho GTPase family, whose members play a key role in the regulation of actin cytoskeleton organization in response to extracellular growth factors. This particular family member has been implicated in the regulation of neuronal morphology and endosomal trafficking. The gene localizes to chromosome 17 and is the centromeric neighbor of the breast-ovarian cancer susceptibility gene BRCA1. [provided by RefSeq, Jul 2008]

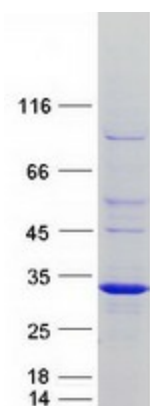
### Product images:



Circular map for RC221840



Western blot validation of overexpression lysate (Cat# [LY417303]) using anti-DDK antibody (Cat# [TA50011-100]). Left: Cell lysates from untransfected HEK293T cells; Right: Cell lysates from HEK293T cells transfected with RC221840 using transfection reagent MegaTran 2.0 (Cat# [TT210002]).



Coomassie blue staining of purified RND2 protein (Cat# [TP321840]). The protein was produced from HEK293T cells transfected with RND2 cDNA clone (Cat# RC221840) using MegaTran 2.0 (Cat# [TT210002]).