

Product datasheet for **RC221833**

SYT15 (NM_031912) Human Tagged ORF Clone

Product data:

Product Type:	Expression Plasmids
Product Name:	SYT15 (NM_031912) Human Tagged ORF Clone
Tag:	Myc-DDK
Symbol:	SYT15
Synonyms:	CHR10SYT; sytXV
Mammalian Cell Selection:	Neomycin
Vector:	pCMV6-Entry (PS100001)
E. coli Selection:	Kanamycin (25 ug/mL)



[View online »](#)

ORF Nucleotide Sequence:

>RC221833 representing NM_031912
 Red=Cloning site Blue=ORF Green=Tags(s)

TTTTGTAATACGACTCACTATAGGGCGGCCGGAATTCGTCGACTGGATCCGGTACCGAGGAGATCTGCC
 GCC**GCGATCGCC**

ATGGCGGAGCAGCTGGCCCTGGTATTGGGGGCACCATCGGGGGCTGCTGCTGCTGCTGTTGATCGGGG
 CAAGCTGCTGTCTGTGGAGAAGTTCTGTGCCACCCTCACCTATGAGGAGCTGCCTGGGACACCAGCCAT
 GGCCACCACAGCTGCCTCCAGTGGGCAGCGGGACAGGCCCTGCCAGCCGATGCTAGGACCAACTGAGC
 AGGCCACCAGCTGTGCCATTCTGGTGGCCCAACCCCTCAAGGCCGAGATTGGGTGCCCTGCACAGTG
 GAGAGTGGGCCGATGCCCATGGGACCCCTGCCCGGCATCAGAGCTGCTGCCTCACACCTCCAGCGGCGG
 CCTTGGAGATGCATGTATGGTGGGGCCATCAACCCAGAGCTGTACAAGTCCCGGAGGACAAAAGTGAG
 ACCGACTCCCGACGGCTGCCTGGGGCGGCTGTGTTCTCGGTGGAATATGAGCAGGAGGCTGAGCGGC
 TGCTGGTGGCTTGATCAAGGCACAGCACCTGCAAGCCCCCTCGGAGACCTGCAGCCCCCTGGTGAAGCT
 CTACCTGTGCCGATGAGCGGCGCTTCTCCAATCCAAGACCAACGAAAACCTCCAACCCGAGTTT
 GACGAGCACTTCACTTTTCAGGTGTCCAGCAAGACCATCACCCAGAGGGTCTGAAGTTCCTCGTCTACC
 ACGTGGACAGGCAGAGGAAGCACCAGCTCCTGGGCCAGGTGCTTCCCTTGAAGAATGAGACCCTAGT
 GGGGACTGCCGGCGTGCATCTGGAGAGACTGGAGGCCGAGAGCCTGGAGCCCCCTCGGAGTTTGGC
 GACCTCCAGTTCTGCCTCAGCTACAACGACTACCTGAGCCGCTGACGGTGGTTGTGCTGCGTGCCAAGG
 GCCTCCGGCTCCAGGAGGACAGAGGCATTGTCAAGTGTCTCTGATGAACCACAACAA
 GTTTGTCAAGTGAAGAAGACTTCAAGTGTCTGGGCTCCATCAACCTGTGTACAATGAGACCTTCAAG
 TCAAGGCCGATGCCACCGAGCTGGATACCGCTAGCCTCAGCCTGACTGTGGTGCAGAACATGGAAGGGG
 ACAAGGCCAGCAGCTGGGCCGAGTGGTGGTGGGCCCTACATGTACACCCGCGCAGAGAGCTGGAGCA
 CTGGGACGAGATGCTCAGCAAGCCAAAGGAGCTGGTGAAGCGCTGGCATGCGCTCTGCCGACCCAGGAG
 CCC

ACGCGTACGCGGCCGCTCGAGCAGAACTCATCTCAGAAGAGGATCTGGCAGCAATGATATCCTGGATT
 ACAAGGATGACGACGATAAGGTTTAA

Protein Sequence:

>RC221833 representing NM_031912
 Red=Cloning site Green=Tags(s)

MAEQLALVIGGTIGLLLLLLIGASCCLWRRFCATLTYEELPGTPAMATTAASSGQRDRPCQPHARTQLS
 RPPAVPFVVPPTLQGRDWPVPLHSGEWADAPWDPCASELLPHTSSGGLGDACMVGA INPELYKFPEDKSE
 TDFPDGCLGRLWFSVEYEQEERLLVGLIKAQHLQAPSETCSPLVKLYLLPDERRFLQSKTKRKT SNPQF
 DEHFIFQVSSKITITQRLKFSVYHVDRQRKHQLLGOVL FPLKNETLVGDCRRVIWRDLEAESLEPPSEFG
 DLQFCLSYNDYLSRLTVVVLRAKGLRLQEDRGI VSVFVKVSLMHNKFKVCKKTSAVLGSINPVYNETFS
 FKADATELDTASLSLTVVQNMEGDKSQQLGRVVVGPYMYTRGRELEHWDEMLSKPKELVKRWHALCRTTE
 P

TRTRPLEQKLISEEDLAANDILDYKDDDDKV

Chromatograms:

https://cdn.origene.com/chromatograms/mk8058_g03.zip

Restriction Sites:

Sgfl-Mlul

Cloning Scheme:


ACCN: NM_031912

ORF Size: 1263 bp

OTI Disclaimer: The molecular sequence of this clone aligns with the gene accession number as a point of reference only. However, individual transcript sequences of the same gene can differ through naturally occurring variations (e.g. polymorphisms), each with its own valid existence. This clone is substantially in agreement with the reference, but a complete review of all prevailing variants is recommended prior to use. [More info](#)

OTI Annotation: This clone was engineered to express the complete ORF with an expression tag. Expression varies depending on the nature of the gene.

Components: The ORF clone is ion-exchange column purified and shipped in a 2D barcoded Matrix tube containing 10ug of transfection-ready, dried plasmid DNA (reconstitute with 100 ul of water).

- Reconstitution Method:**
1. Centrifuge at 5,000xg for 5min.
 2. Carefully open the tube and add 100ul of sterile water to dissolve the DNA.
 3. Close the tube and incubate for 10 minutes at room temperature.
 4. Briefly vortex the tube and then do a quick spin (less than 5000xg) to concentrate the liquid at the bottom.
 5. Store the suspended plasmid at -20°C. The DNA is stable for at least one year from date of shipping when stored at -20°C.

RefSeq: [NM_031912.5](#)

RefSeq Size: 4862 bp

RefSeq ORF: 1266 bp

Locus ID: 83849

UniProt ID: [Q9BQS2](#)

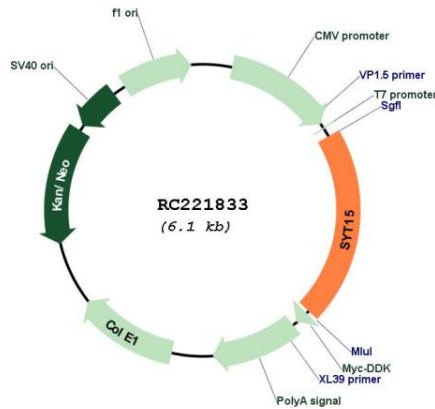
Cytogenetics: 10q11.22

Protein Families: Transmembrane

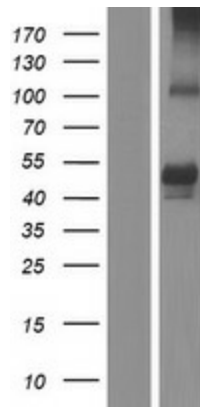
MW: 47.2 kDa

Gene Summary: This gene encodes a member of the Synaptotagmin (Syt) family of membrane trafficking proteins. Members of this family contain a transmembrane region and a C-terminal-type tandem C2 domain. Unlike related family members, the encoded protein may be involved in membrane trafficking in non-neuronal tissues. Two transcript variants encoding distinct isoforms have been identified for this gene. [provided by RefSeq, Jul 2008]

Product images:



Circular map for RC221833



Western blot validation of overexpression lysate (Cat# [LY410441]) using anti-DDK antibody (Cat# [TA50011-100]). Left: Cell lysates from untransfected HEK293T cells; Right: Cell lysates from HEK293T cells transfected with RC221833 using transfection reagent MegaTran 2.0 (Cat# [TT210002]).